



1133

PENN AVENUE
UP TO 33,200 SF AVAILABLE

SITUATED IN AN AMENITY RICH LOCATION, WALKABLE TO THE CULTURAL DISTRICT AND STRIP DISTRICT

**FOR MORE
INFORMATION
PLEASE
CONTACT:**

Jeremy Z. Kronman

Executive Vice President

412.394.9849

jeremy.kronman@cbre.com

Adam P. Viccaro

Senior Associate

412.471.3285

adam.viccaro@cbre.com

Timothy S. McCarthy

Associate

412.394.9816

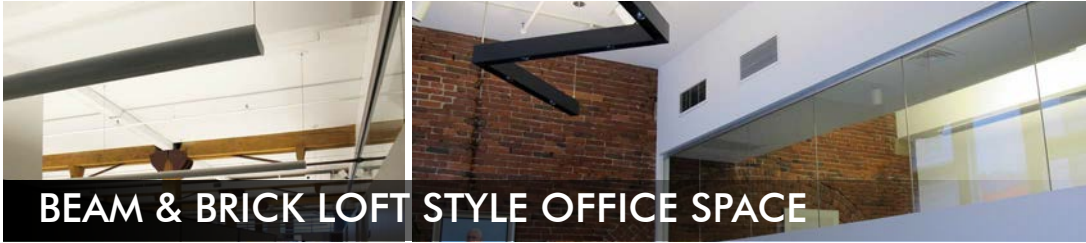
timothy.mccarthy@cbre.com

BUILDING FEATURES:

- ▶ Up to 33,200 SF Available Immediately
- ▶ Full floors available up to 6,640 SF
- ▶ Beam & Brick Loft Style Office Space
- ▶ Easy Access to the CBD, North, and East End
- ▶ Surrounded by Numerous Affordable Parking Options and Public Transit
- ▶ Various floor configurations both office intensive and open plan
- ▶ High Quality Building Systems
- ▶ Great Views of the Rivers and North Side
- ▶ Fully-Wired for Modern Voice/Data Communication Systems

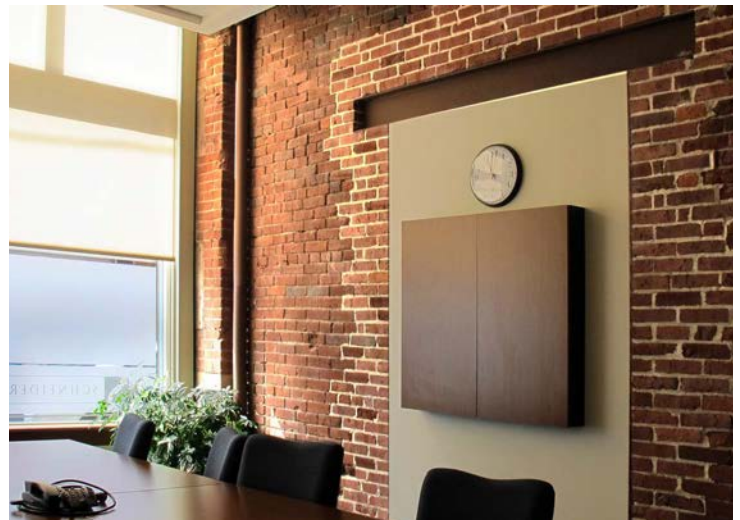
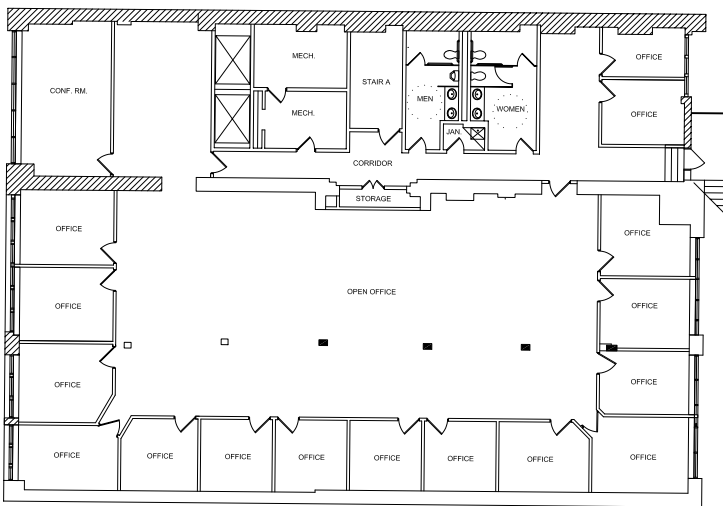
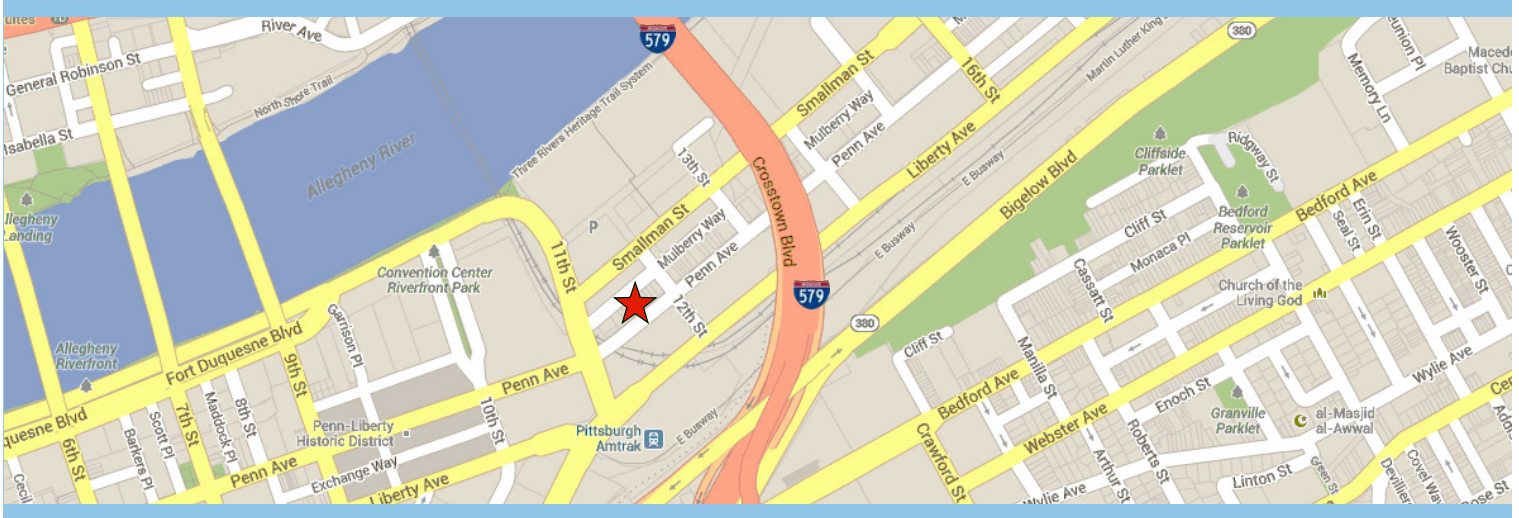
© 2014 CBRE, Inc. This information has been obtained from sources believed reliable. We have not verified it and make no guarantee, warranty or representation about it. Any projections, opinions, assumptions or estimates used are for example only and do not represent the current or future performance of the property. You and your advisors should conduct a careful, independent investigation of the property to determine to your satisfaction the suitability of the property for your needs.

CBRE



BEAM & BRICK LOFT STYLE OFFICE SPACE

1133
PENN AVENUE
 UP TO 33,200 SF AVAILABLE



© 2014 CBRE, Inc. This information has been obtained from sources believed reliable. We have not verified it and make no guarantee, warranty or representation about it. Any projections, opinions, assumptions or estimates used are for example only and do not represent the current or future performance of the property. You and your advisors should conduct a careful, independent investigation of the property to determine to your satisfaction the suitability of the property for your needs.

