

AVAILABLE FOR SALE

# 12.2 ACRES

CLAY ROAD & GESSNER ROAD :: HOUSTON, TX 77041



**FOR MORE INFORMATION, PLEASE CONTACT**

- ;; ALEX MAKRIS**  
713.577.1827  
alex.makris@cbre.com
- ;; JAZZ HAMILTON**  
713.577.1805  
jazz.hamilton@cbre.com
- ;; DARIN GOSDA**  
713.577.1819  
darin.gosda@cbre.com
- ;; CHRIS BERGMANN**  
713.577.1694  
chris.bergmann@cbre.com
- ;; CBRE**  
2800 Post Oak Blvd, Ste 2300  
Houston, TX 77056  
713.577.1600  
www.cbre.com/HoustonRetail



**PROPERTY HIGHLIGHTS**

- 12.2 Acres Available for Sale
- Tract 1 Located at the Signalized Intersection of Gessner Road and Clay Road with Excellent Frontage Along Both Gessner Road and Clay Road
- Located Within the Spring Branch Management District
- Utilities in Place (City of Houston)
- Near Proposed Hines/Taub Development and Baseball USA
- Site Approved for Commercial Development Including Hotel; Multi-Family and Single-Family Developments are Restricted
- Tracts Not Divisible

**DEMOGRAPHICS**

2014 EST. DEMOGRAPHICS	1 MILE	3 MILES	5 MILES
Population	15,295	97,402	260,630
Growth 2014-2019	9.29%	5.62%	5.93%
Avg. Household Income	\$68,485	\$58,931	\$80,317

**AREA RETAILERS**



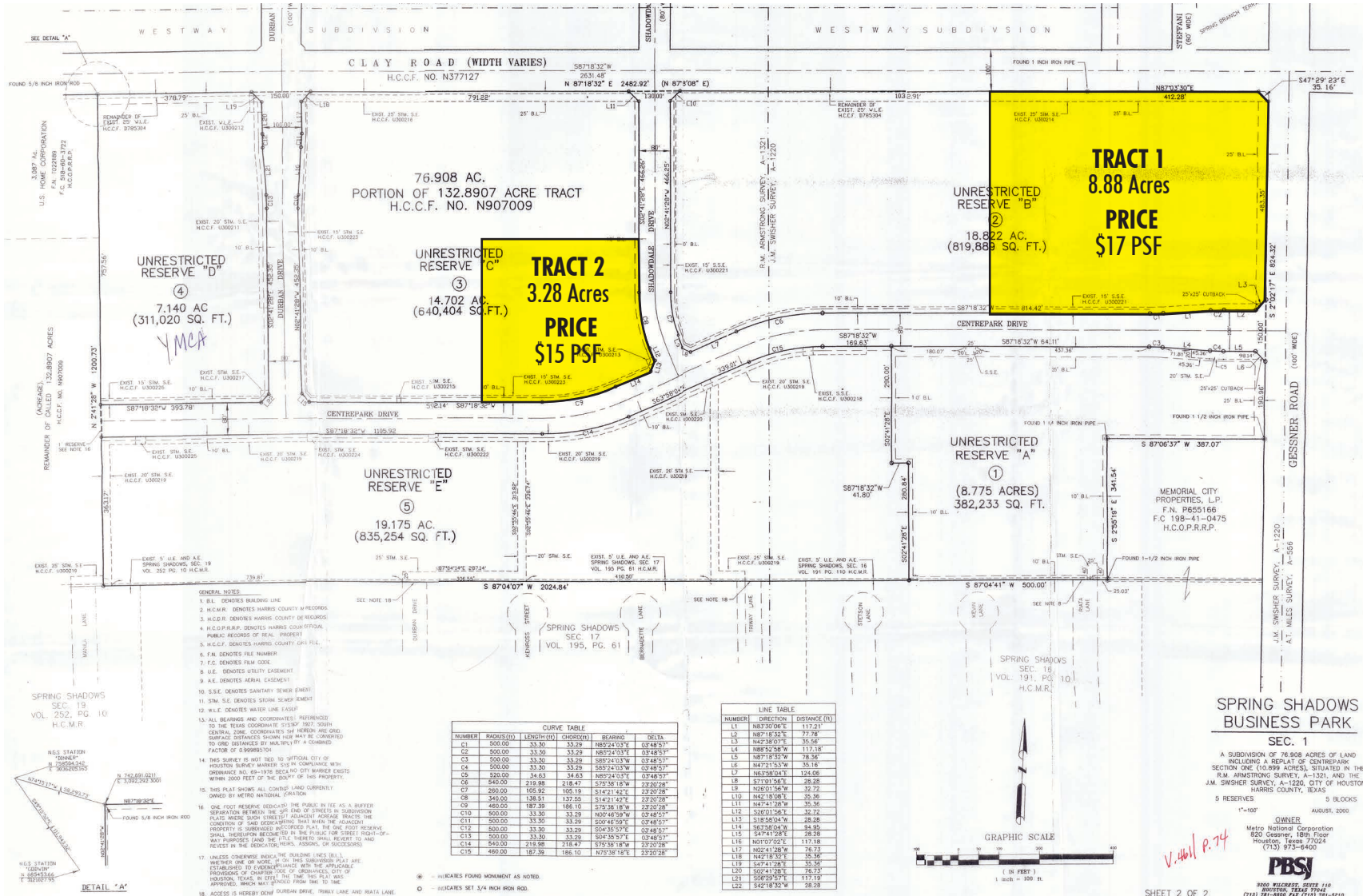
TRAFFIC COUNTS	CPD
Clay West of Gessner	31,669
Clay East of Gessner	30,520
Gessner North of Clay	14,490
Gessner South of Clay	22,140

© 2014 CBRE, Inc. We obtained the information above from sources we believe to be reliable. However, we have not verified its accuracy and make no guarantee, warranty or representation about it. It is submitted subject to the possibility of errors, omissions, change of price, rental or other conditions, prior sale, lease or financing, or withdrawal without notice. We include projections, opinions, assumptions or estimates for example only, and they may not represent current or future performance of the property. You and your tax and legal advisors should conduct your own investigation of the property and transaction. All marks displayed on this document are the property of their respective owners.

AVAILABLE FOR SALE

# 12.2 ACRES

CLAY ROAD & GESSNER ROAD :: HOUSTON, TX 77041



**ALEX MAKRIS**  
713.577.1827  
alex.makris@cbre.com

**JAZZ HAMILTON**  
713.577.1805  
jazz.hamilton@cbre.com

**DARIN GOSDA**  
713.577.1819  
darin.gosda@cbre.com

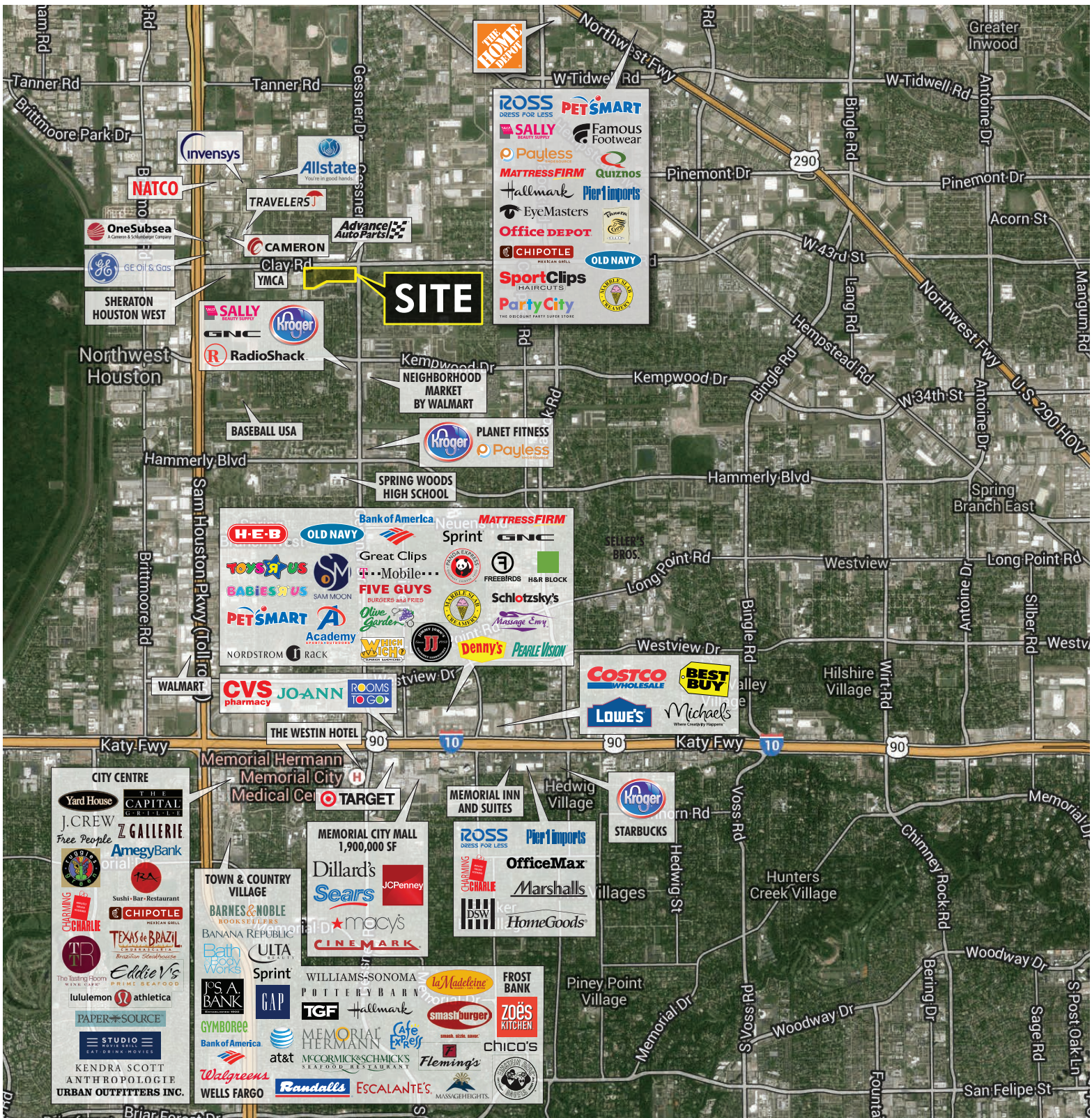
**CHRIS BERGMANN**  
713.577.1694  
chris.bergmann@cbre.com



AVAILABLE FOR SALE

# 12.2 ACRES

CLAY ROAD & GESSNER ROAD :: HOUSTON, TX 77041



ALEX MAKRIS  
713.577.1827  
alex.makris@cbre.com

JAZZ HAMILTON  
713.577.1805  
jazz.hamilton@cbre.com

DARIN GOSDA  
713.577.1819  
darin.gosda@cbre.com

CHRIS BERGMANN  
713.577.1694  
chris.bergmann@cbre.com

