

MAKERS QUARTER™



BLOCK D

east end



VIEW FROM THE 5TH FLOOR



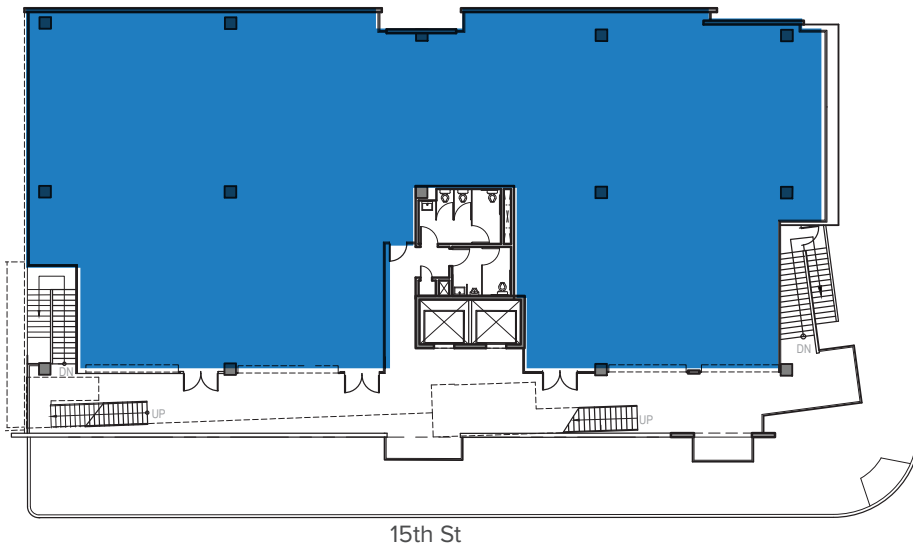
# BLOCK D FEATURES

- Efficient collaborative design
- Multiple balconies and outdoor circulation space
- A 50,000 square foot collaborative office hub with efficient 10,000 square foot floor plates, abundant light and outdoor circulation
- The building features floor to ceiling glass with great natural light as well as city and partial views of San Diego Bay
- The poured concrete structure, historically influenced façade and roll up doors give the project an authentic industrial feel
- Up to 40,000 square feet is available to a single user with freeway visible building top signage
- 14 foot slab-to-slab height on floors 3-5
- Currently programming neighborhood retail on the ground floor space

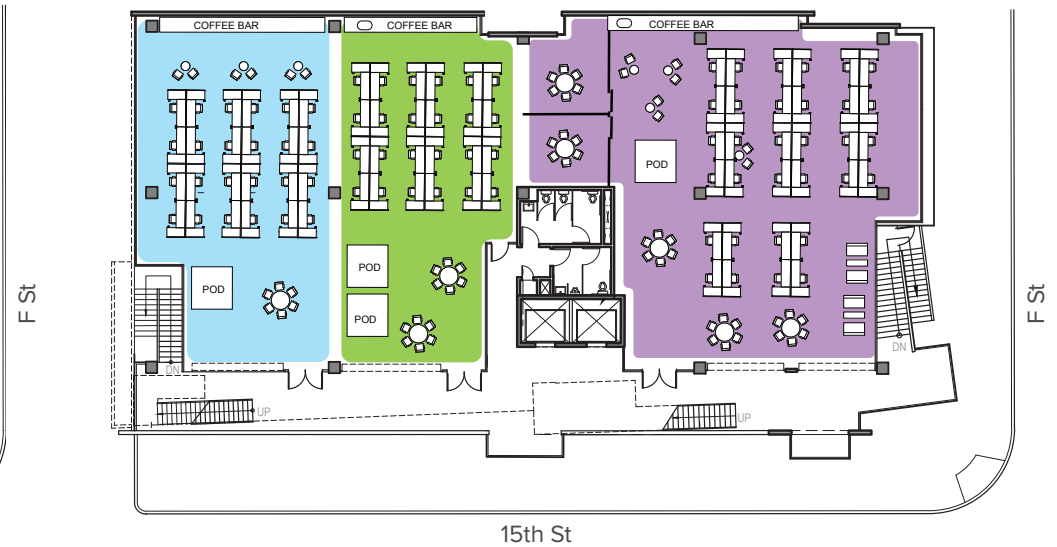




## Hypothetical Full Floor



## Hypothetical Demising Plan



- The second floor features 20-foot ceilings with the ability to fabricate creative mezzanine opportunities
- The smaller floor plates are divisible to 1,886 square feet and also work well for innovation incubators
- Creative and open spaces offer users ultimate flexibility between 1,886 and 40,000 square feet


**SUITE 1** 2,025 SQUARE FEET


**SUITE 2** 1,886 SQUARE FEET

**SUITE 3** 3,551 SQUARE FEET





 [makersquarter.com](http://makersquarter.com)

 [facebook.com/MakersQuarter](https://facebook.com/MakersQuarter)

 [makersquarter.com](http://makersquarter.com)

For more information, please contact:

**MATT CARLSON**  
+1 858 546 2636

[matt.carlson@cbre.com](mailto:matt.carlson@cbre.com)  
CA Lic. 01459868

**RYAN GRANT**  
+1 619 696 8354

[ryan.grant@cbre.com](mailto:ryan.grant@cbre.com)  
CA Lic. 01813531

**CBRE**

350 Tenth Avenue, Suite 800  
San Diego, CA 92101  
[www.cbre.com](http://www.cbre.com)

© 2015 CBRE, Inc. This information has been obtained from sources believed reliable. We have not verified it and make no guarantee, warranty or representation about it. Any projections, opinions, assumptions or estimates used are for example only and do not represent the current or future performance of the property. You and your advisors should conduct a careful, independent investigation of the property to determine to your satisfaction the suitability of the property for your needs.