

One Harrison Park

401 Harrison Oaks Blvd.
Cary, NC 27513

1,261 SF up to 7,007 SF Available



One Harrison Park
401 Harrison Oaks Blvd.
Cary, NC 27513



Office for Lease

In a Prime Cary Location, just off Harrison Ave & I-40

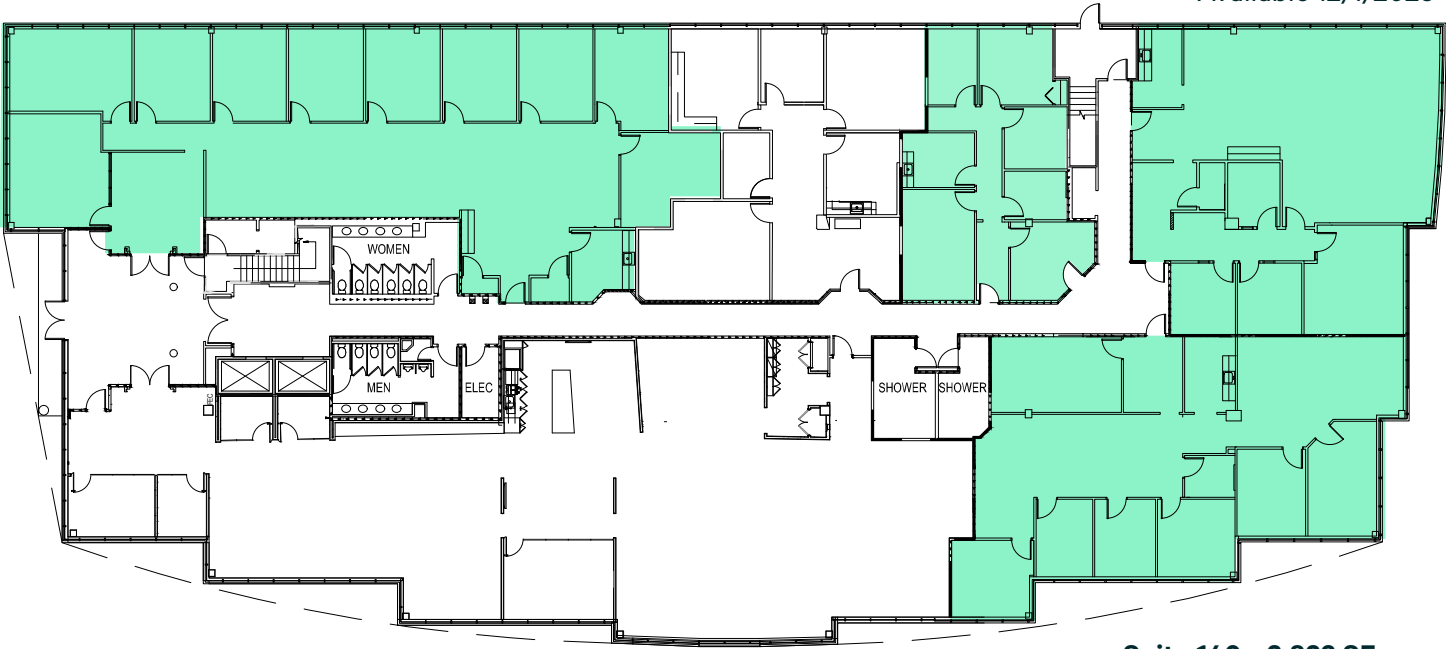
- 3-story, 56,947 RSF building
- Located across from SAS Global HQ and the five-star Umstead Hotel & Spa/Heron's
- Showers located on the 1st floor available for tenant use
- \$26.50/SF, full service
- Central Triangle location - just 3 miles from RDU International Airport and less than 3.5 miles from PNC Arena (Carolina Hurricanes)

1ST FLOOR AVAILABILITY

Suite 100 • 4,185 SF
Plug-and-Play & FF&E Available

Suite 145 • 1,261 SF

Suite 150 • 2,537 SF
Available 12/1/2025

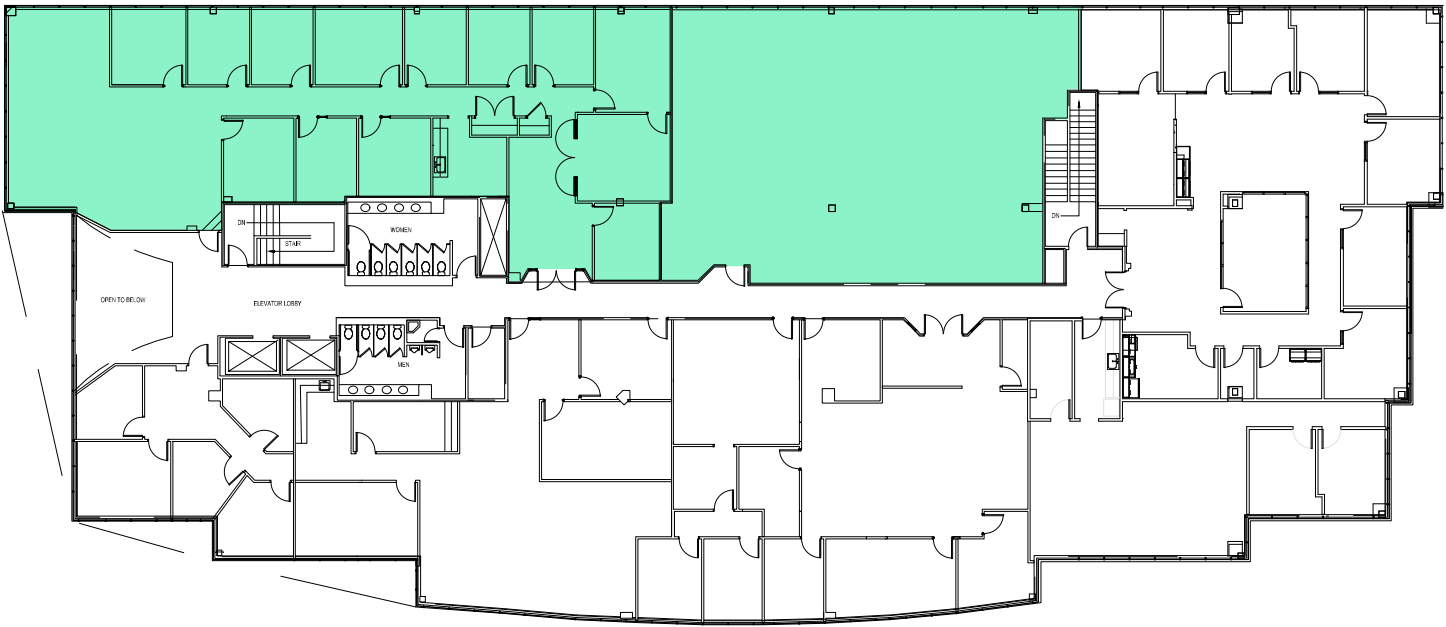


Suites 140 & 150 can be combined for 5,360 SF

2ND FLOOR AVAILABILITY

Suite 200 • 4,028 SF

Suite 201 • 2,979 SF



Suites 200, 201, and 250 can be combined for 7,007 SF

One Harrison Park
401 Harrison Oaks Blvd.
Cary, NC 27513

Office For Lease



Contact Us

John Brewer

Executive Vice President
+1 919 831 8214
john.brewer@cbre.com

Ed Pulliam

Executive Vice President
+1 919 831 8237
ed.pulliam@cbre.com

www.cbre.com/raleigh

© 2025 CBRE, Inc. All rights reserved. This information has been obtained from sources believed reliable but has not been verified for accuracy or completeness. CBRE, Inc. makes no guarantee, representation or warranty and accepts no responsibility or liability as to the accuracy, completeness, or reliability of the information contained herein. You should conduct a careful, independent investigation of the property and verify all information. Any reliance on this information is solely at your own risk. CBRE and the CBRE logo are service marks of CBRE, Inc. All other marks displayed on this document are the property of their respective owners, and the use of such marks does not imply any affiliation with or endorsement of CBRE. Photos herein are the property of their respective owners. Use of these images without the express written consent of the owner is prohibited.

CBRE