



# PARKRIDGE V

---

10780 – 10790 PARKRIDGE BOULEVARD



**SIGNAGE AVAILABLE**

*Dulles Toll Road*



**METRO SHUTTLE SERVICE PROVIDED**

Servicing Wiehle Metro Station during rush hour and Reston Town Center during lunch hour.



Parkridge V is a modern, light-filled office project strategically located at the center point between Tysons Corner to the east and Dulles International Airport to the west.

Parkridge V offers one of region's most superior Toll Road signage opportunities with exceptional visibility from traffic flows of 250,000 daily passengers.

In addition to its dramatic two story atrium, on-site amenities include a fitness center, convenience cafe, tenant lounge, and conference center.

Situated at the Eastern gateway of Reston, Parkridge V is proximate to a multitude of dining and retail centers including: South Lakes Village Center (1 mile), Reston Station (2 miles), Plaza America (3 miles), and the Reston Town Center (3.5 miles).

**MODERN**  
*Prominence*



Parkridge V underwent a comprehensive renovation to modernize the project streetscape, enhance the on-site project amenities, as well as improve the building common areas. Renovations included:

- Enhanced two story, first-class lobbies with contemporary design elements and modernized building canopies
- State-of-the-art fitness center, tenant lounge, and conference center each fully equipped with leading edge technology and equipment
- Improved building common areas including restrooms and corridors

QUALITY *Enhancements*



### OFF-SITE EVENT SPACE

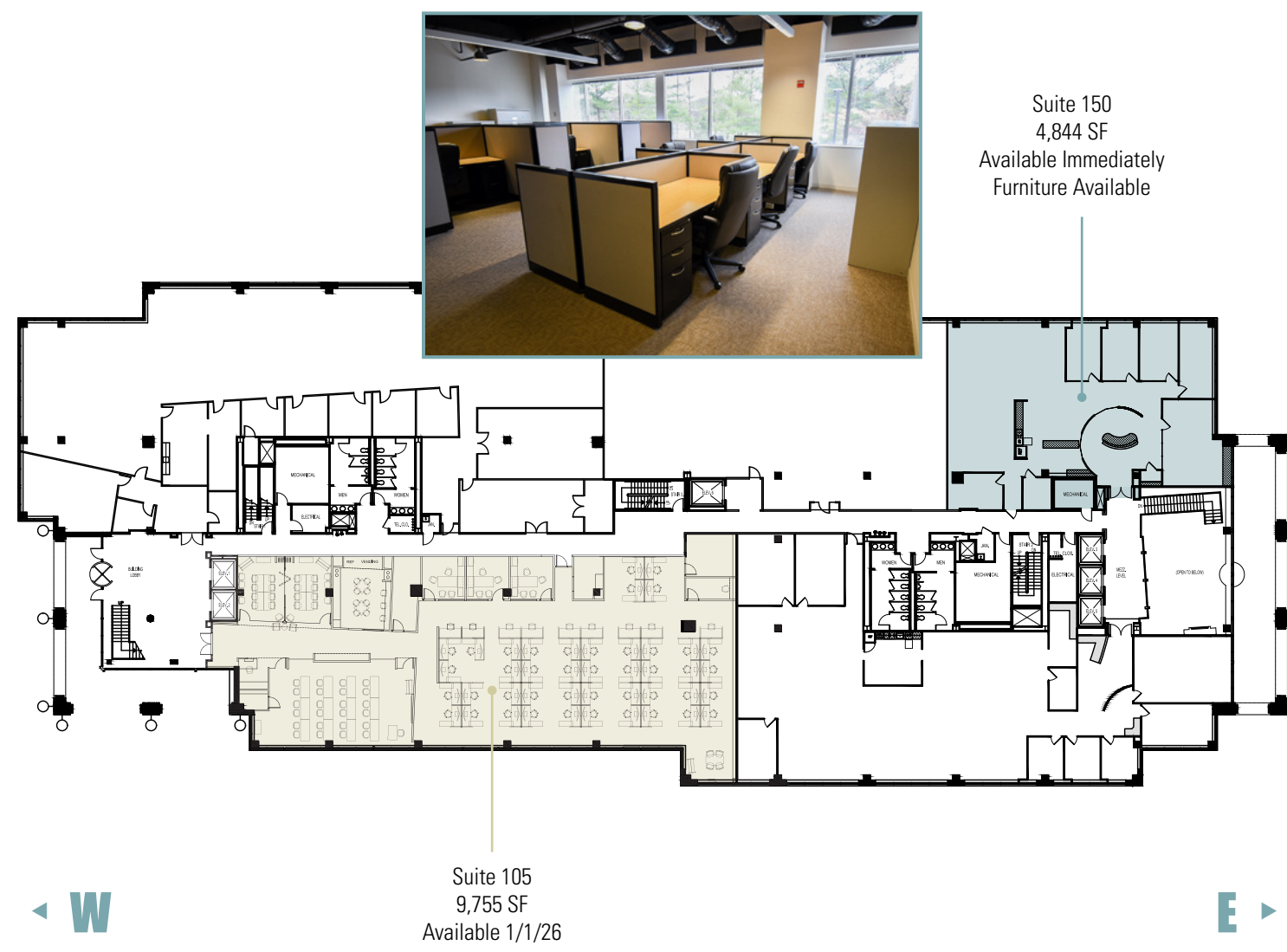
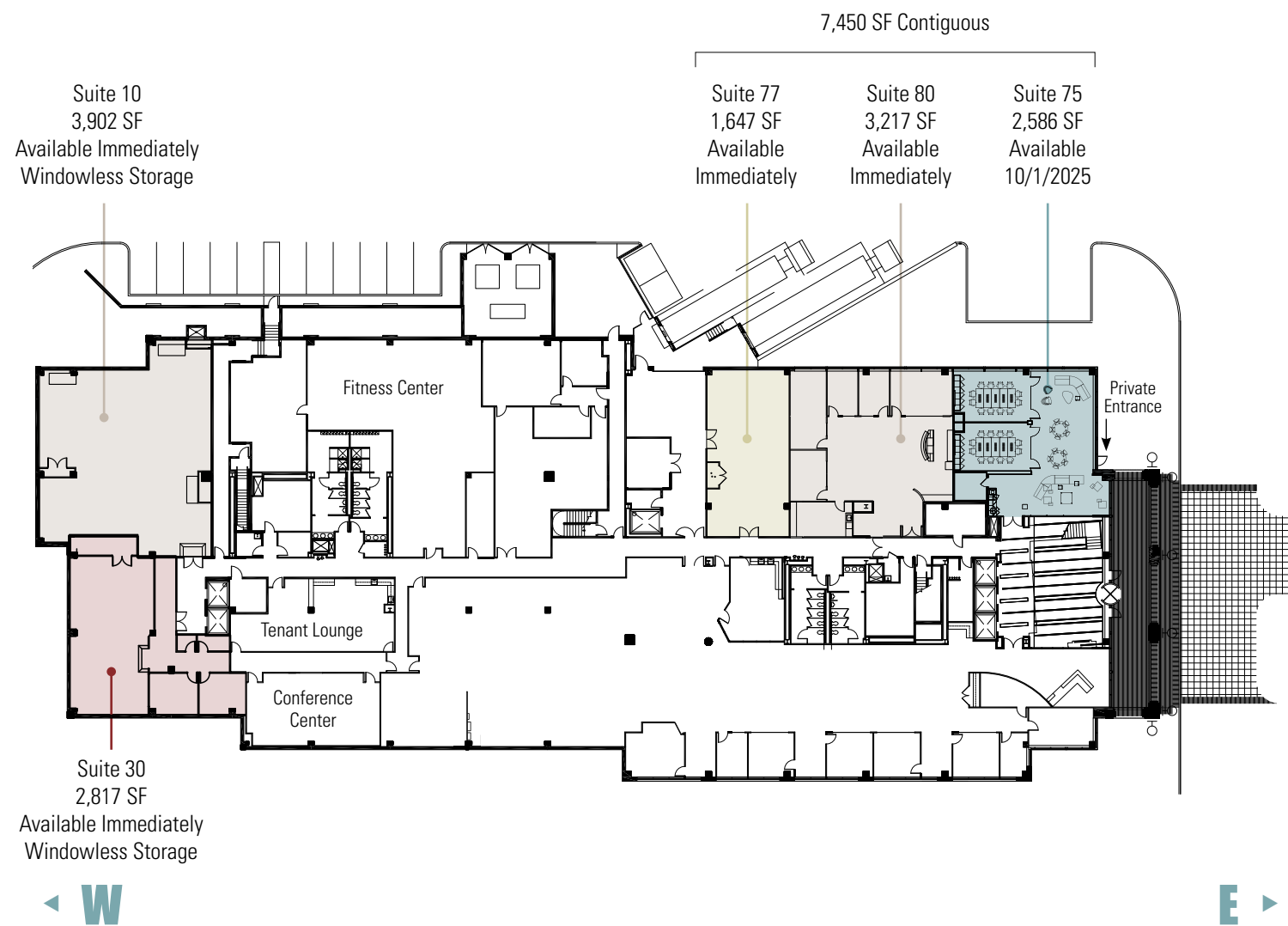
Turing Hall is a three-story collaboration/ event space in Rockville. This unique space offered to Parkridge V tenants, can hold up to 150 guests for corporate trainings, informal brainstorming sessions, leadership conferences, or intimate private events.

Parkridge V offers the conveniences of a modern amenitized building to meet your company's needs:

- Recently renovated fitness center offering on-site personal training through the award winning Kamp Pendleton
- Large conference center with AV and whiteboard walls
- Tenant lounge with catering kitchen, seating, and games conveniently connected to the conference center
- Three delis within the park
- Access to large event space in Rockville

# CONVENIENT

*Amenities*



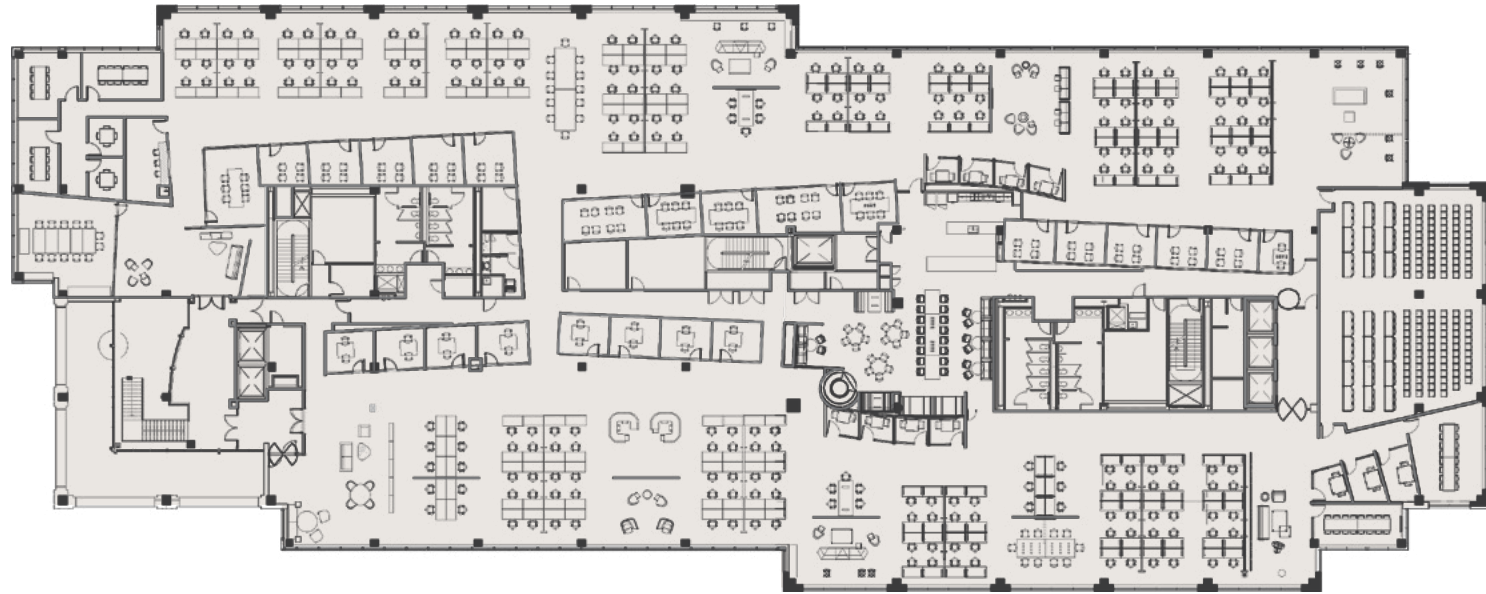
**Parkridge V**  
Concourse Level



**Parkridge V**  
First Floor

1st to 4th Floors - 107,347 SF Contiguous  
2nd & 3rd Floors - 85,008 SF Contiguous

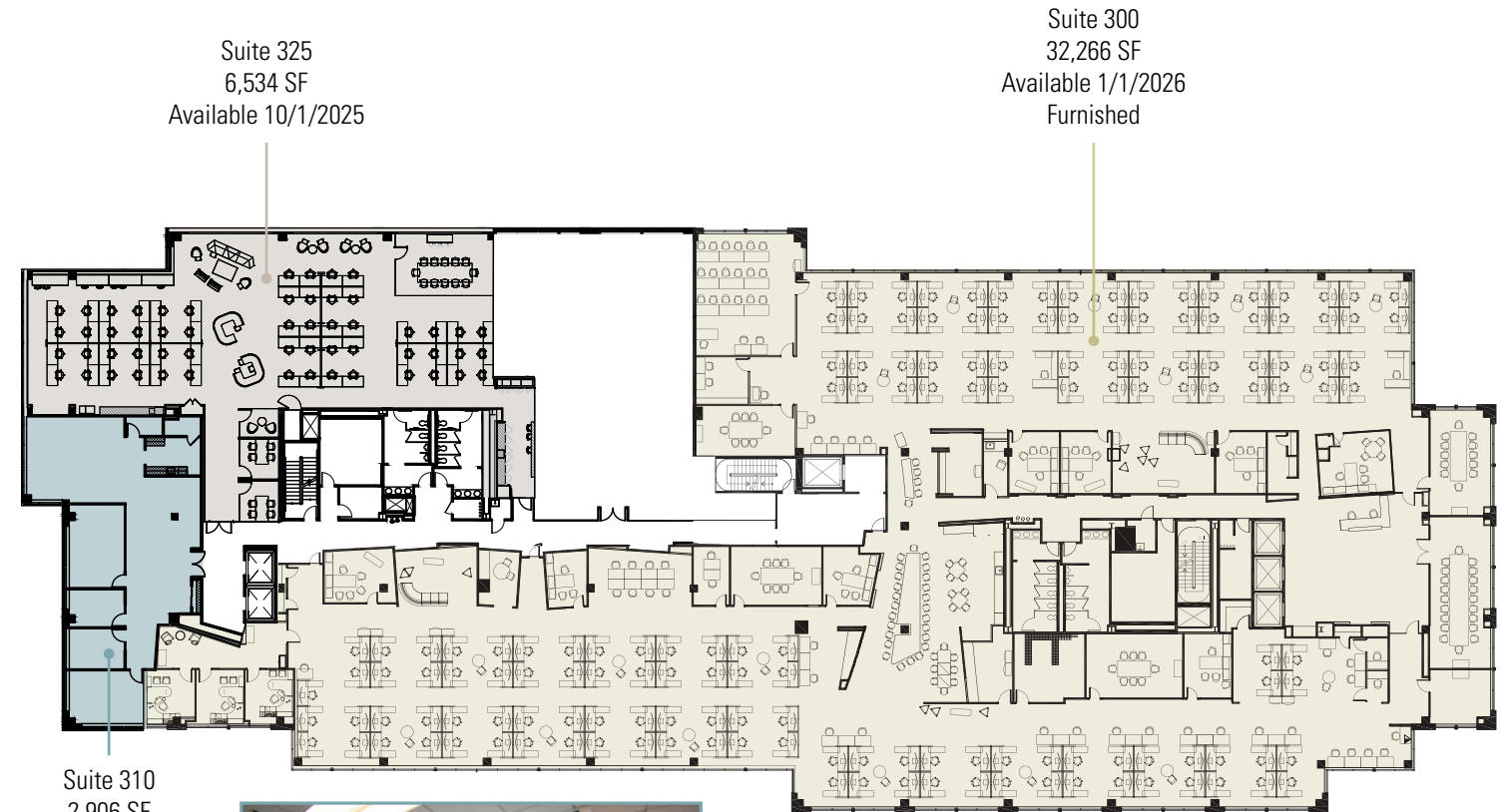
3rd Floor - 41,706 SF Contiguous



Suite 200  
43,302 SF  
Available 10/1/2025

◀ W

E ▶



Suite 325  
6,534 SF  
Available 10/1/2025

Suite 300  
32,266 SF  
Available 1/1/2026  
Furnished

Suite 310  
2,906 SF  
Available Immediately



◀ W

E ▶

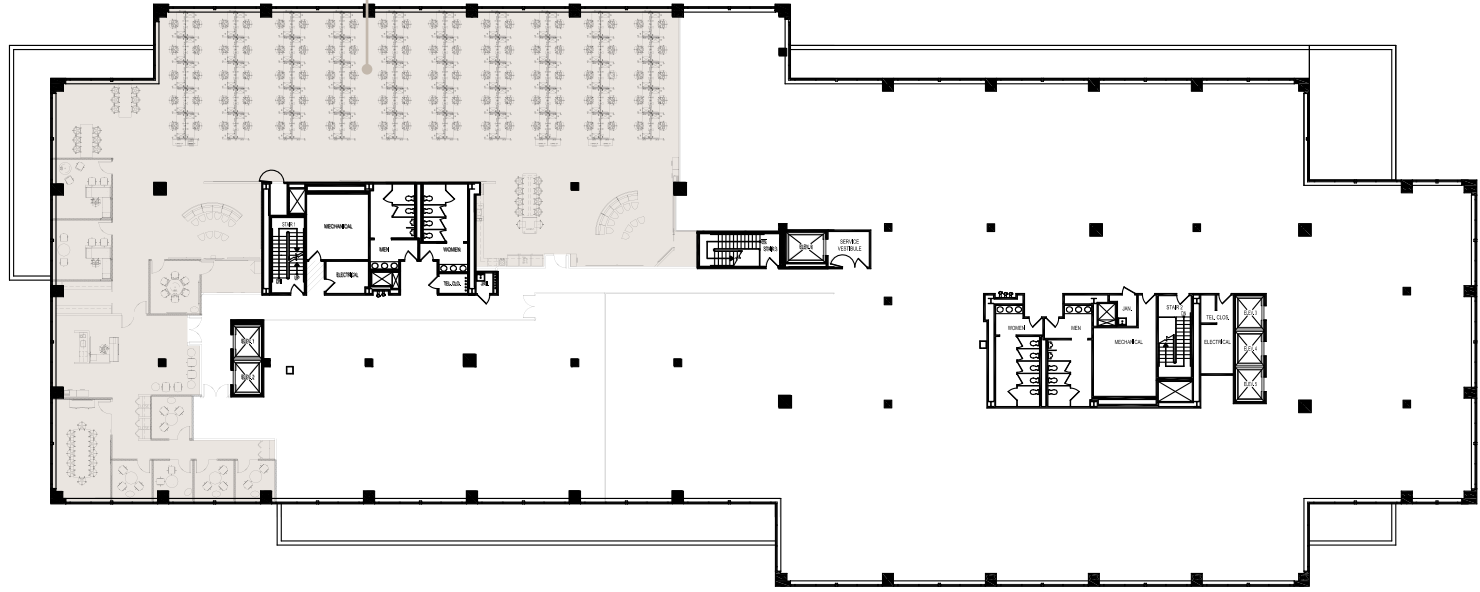


**Parkridge V**  
Second Floor



**Parkridge V**  
Third Floor

Suite 410  
12,584 SF  
Available 11/30/2025



◀ W

E ▶



**Parkridge V**  
Fourth Floor



**PARKRIDGE V**

10780 – 10790 PARKRIDGE BOULEVARD





# CBRE

TERRY REILEY  
+1 703 905 0236  
[terry.reiley@cbre.com](mailto:terry.reiley@cbre.com)

ROSANNE RICHARDS  
+1 703 905 0207  
[rosanne.richards@cbre.com](mailto:rosanne.richards@cbre.com)

QUINN REILEY  
+1 703 905 0211  
[quinn.reiley@cbre.com](mailto:quinn.reiley@cbre.com)