

Retail

CBRE

For Sale

# 1989 Vernon Street

Lumby, BC

Retail Investment Opportunity | 0.32 Acre Site

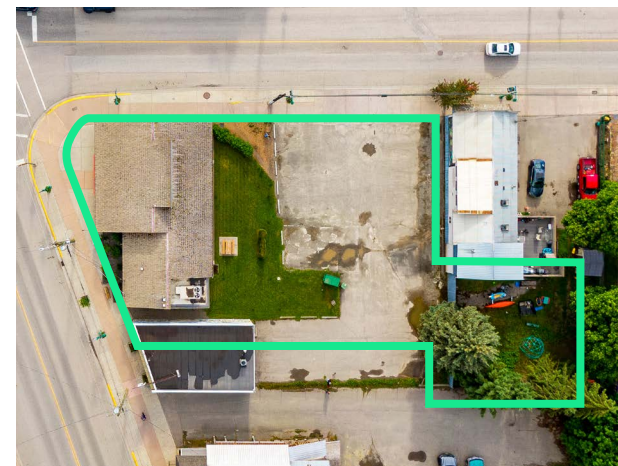
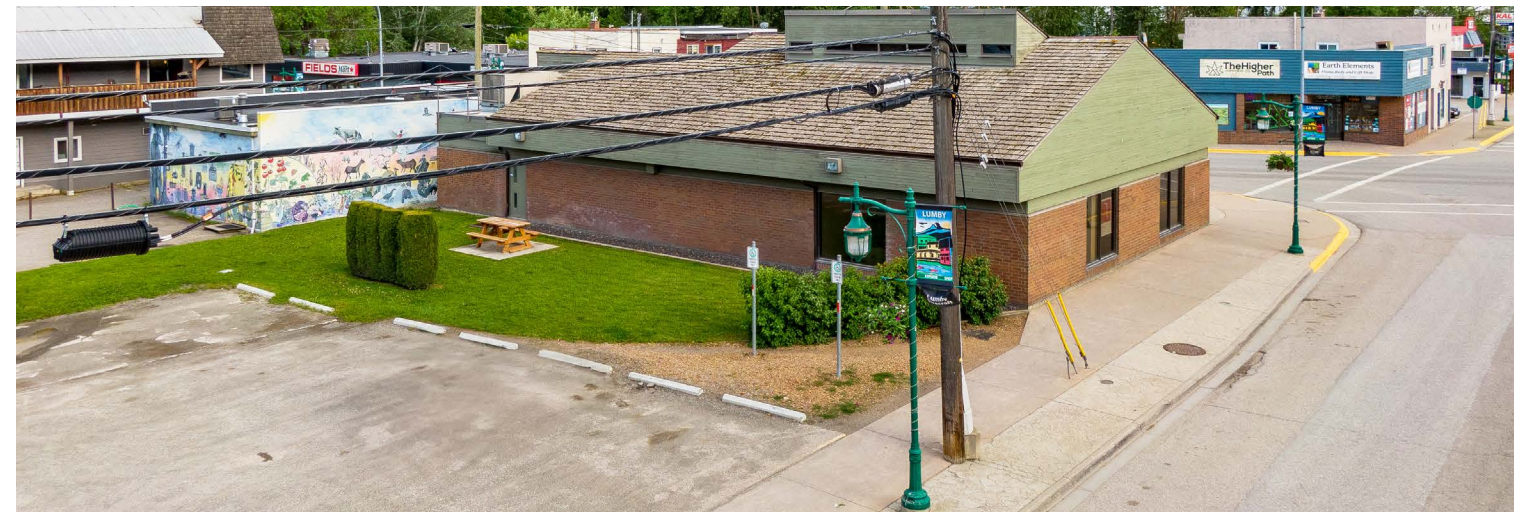
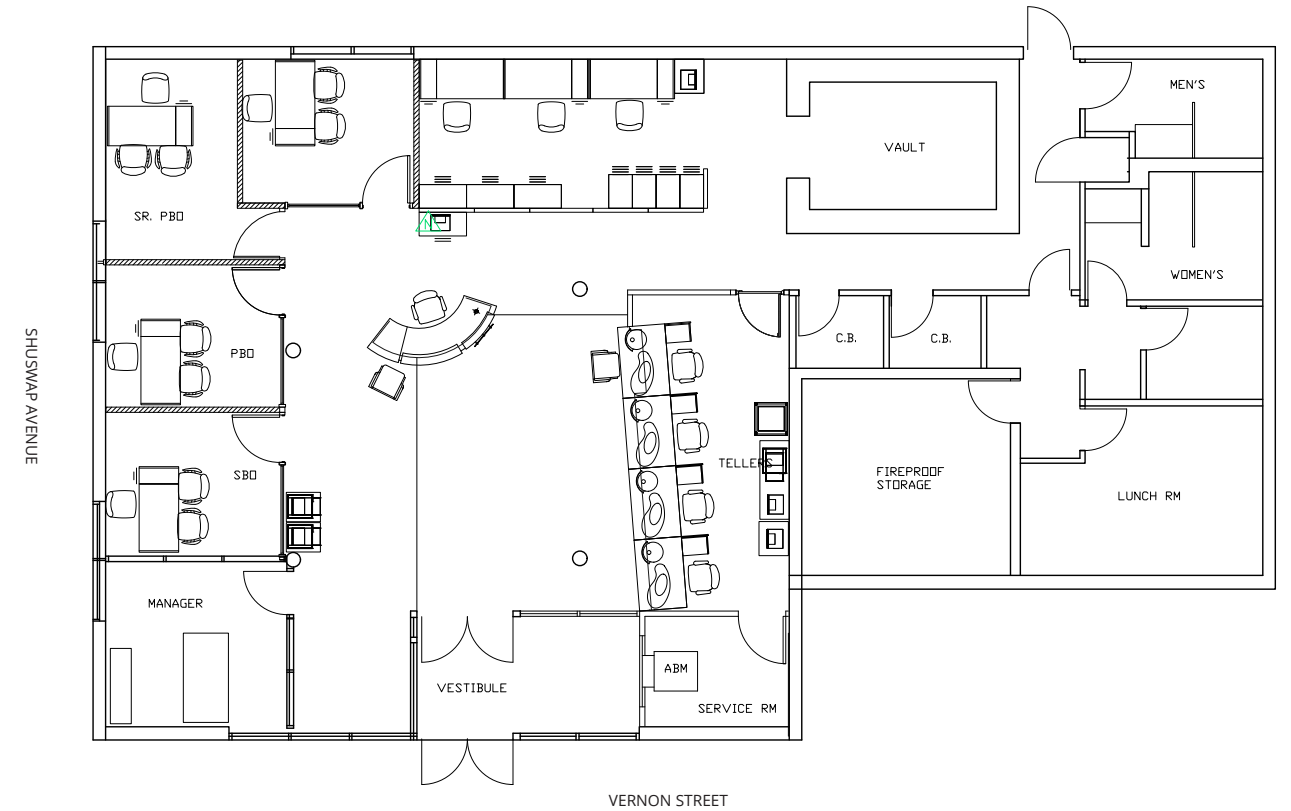




1989 Vernon Street  
Lumby, BC

For Sale

# Floor Plan



# Opportunity

## Retail Investment

CBRE is pleased to present the opportunity to acquire this 0.32 Acre (20,036 sq. ft.) corner site, improved with a building constructed in 1982 and renovated in 2000. Located on the best corner in Lumby - a village located 45km south of Vernon - this site is a unique investment opportunity for those looking to capitalize on the North Okanagan region's economic growth and market potential. Neighbouring property currently listed for sale. Contact agent for assembly details.

The Site has undergone a Phase II Environmental Site Assessment with clean results.

20,036 Sq. Ft.  
Site Area

3,150 Sq. Ft.  
Building Area

100 Ft.  
Frontage

004-240-103  
PID

C1 General Commercial  
Zoning

\$799,000  
Asking Price





# Location

## Neighbourhood Tenants

- + BC Liquor
- + Monashee Community Co-op
- + Super A (Fresh Mart)
- + Ida's Bakery & Deli
- + Shell
- + Jitter Beans Coffee House



0.5  
HOUR DRIVE  
Vernon, BC



1  
HOUR DRIVE  
Kelowna, BC



2  
HOUR DRIVE  
Kamloops, BC

source: google.com/maps

## Contact Us

**Adrian Beruschi**  
Personal Real Estate Corporation  
Senior Vice President  
Retail & Investment Properties  
+1 604 662 5138  
adrian.beruschi@cbre.com

**Brad Walford**  
Personal Real Estate Corporation  
Senior Vice President  
Retail Investment Group  
+1 416 495 6241  
brad.walford@cbre.com

**Brett Taggart**  
Personal Real Estate Corporation  
Associate Vice President  
Retail Investment Group  
+1 416 495 6269  
brett.taggart@cbre.com

This disclaimer shall apply to CBRE Limited, Real Estate Brokerage, and to all other divisions of the Corporation; to include all employees and independent contractors ("CBRE"). All references to CBRE Limited herein shall be deemed to include CBRE, Inc. The information set out herein, including, without limitation, any projections, images, opinions, assumptions and estimates obtained from third parties (the "Information") has not been verified by CBRE, and CBRE does not represent, warrant or guarantee the accuracy, correctness and completeness of the Information. CBRE does not accept or assume any responsibility or liability, direct or consequential, for the Information or the recipient's reliance upon the Information. The recipient of the Information should take such steps as the recipient may deem necessary to verify the Information prior to placing any reliance upon the Information. The Information may change and any property described in the Information may be withdrawn from the market at any time without notice or obligation to the recipient from CBRE. CBRE and the CBRE logo are the service marks of CBRE Limited and/or its affiliated or related companies in other countries. All other marks displayed on this document are the property of their respective owners. All Rights Reserved.

Mapping Sources: Canadian Mapping Services [canadamapping@cbre.com](http://canadamapping@cbre.com); DMTI Spatial, Environics Analytics, Microsoft Bing, Google Earth.