



333 WOLF POINT PLAZA
CHICAGO

Building Amenity Guide

Hines

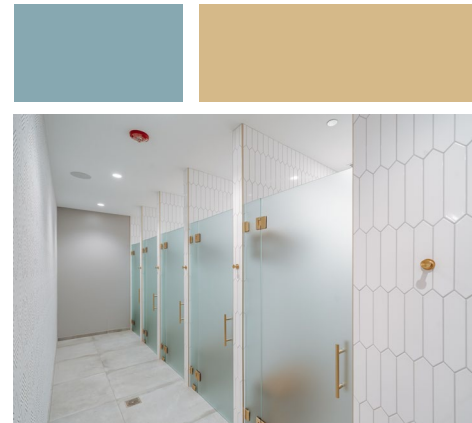
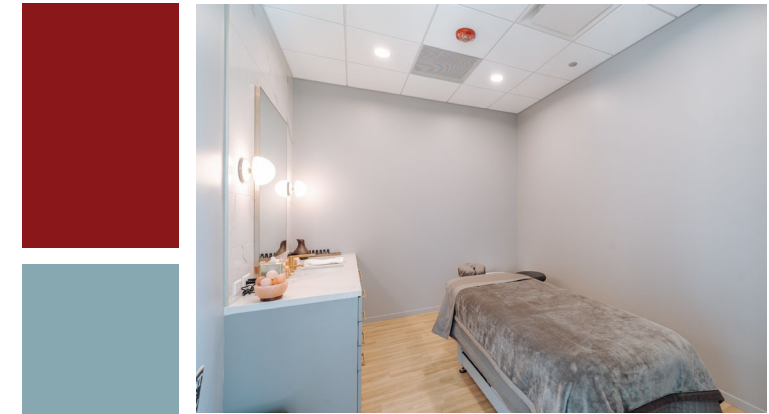
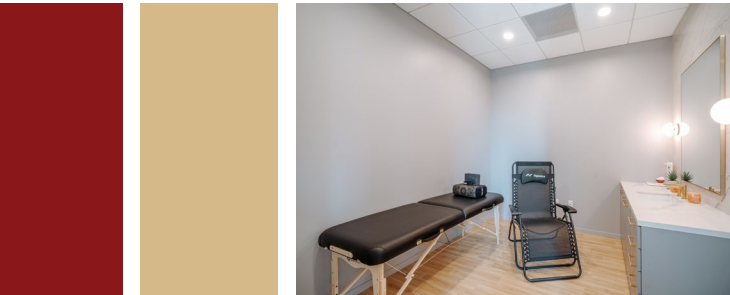


Wolf Point Wellness Center



Wolf Point Wellness

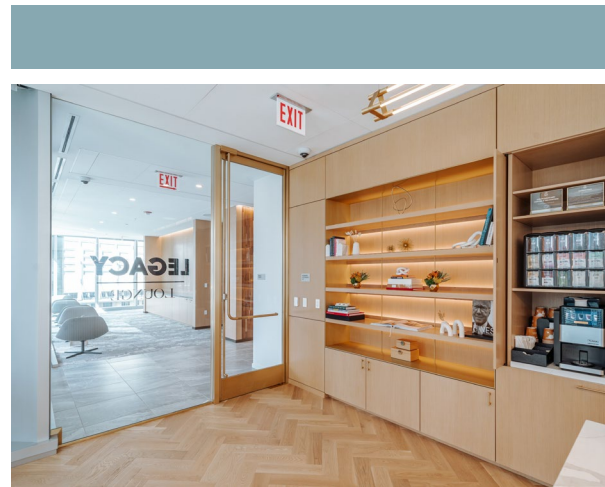
- Located on the 4th floor and open 24/7 for tenant access (staffed weekdays 6:00 AM - 7:00 PM)
- Complimentary for tenants with completed waiver and registration
- Features Peloton bikes, cardio equipment, and full weight training area
- Offers group fitness classes including yoga, HIIT, bootcamp, and spin
- Includes locker rooms, recovery services, personal training, and wellness programming



Legacy Lounge

Legacy Lounge Features

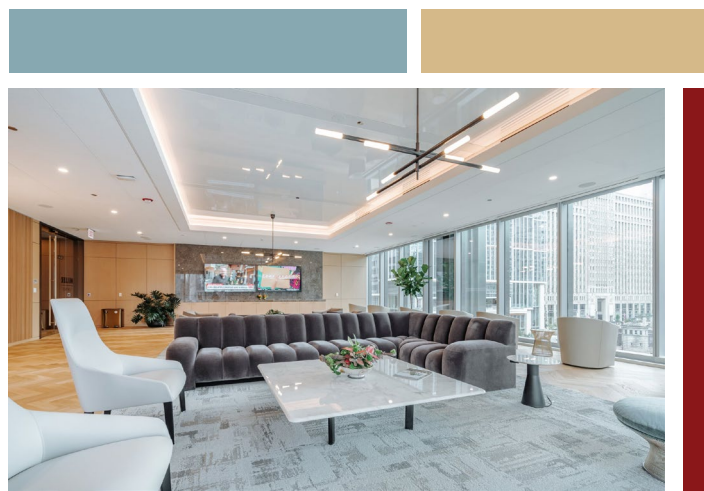
- Located on the 4th floor adjacent to the conference center, designed for flexible work + relaxation
- Features comfortable seating, work surfaces, and ample power for productivity
- Complimentary coffee station available weekdays (8:00 AM - 6:00 PM)
- Equipped with TVs, a sound system, and event-ready capabilities
- Available for tenant meetings and events (reservations required for private use)



Miller Lounge

Miller Lounge Features

- 4th floor lounge with large seating areas for collaboration and gatherings
- Flat-screen TVs with HDMI/ClickShare and integrated sound system
- Access to kitchenette with sink, refrigerators, and service areas
- Designed to host tenant meetings, events, and networking functions
- Reservable for private use with hourly rental (management approval required)



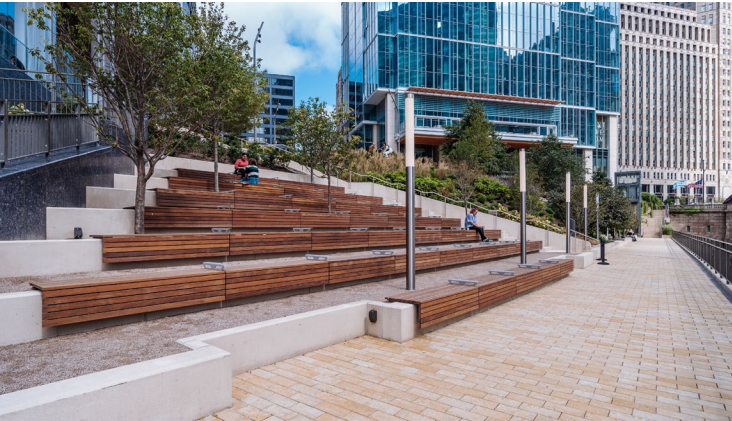
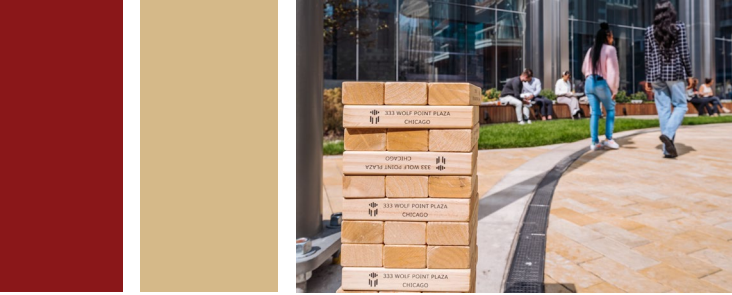
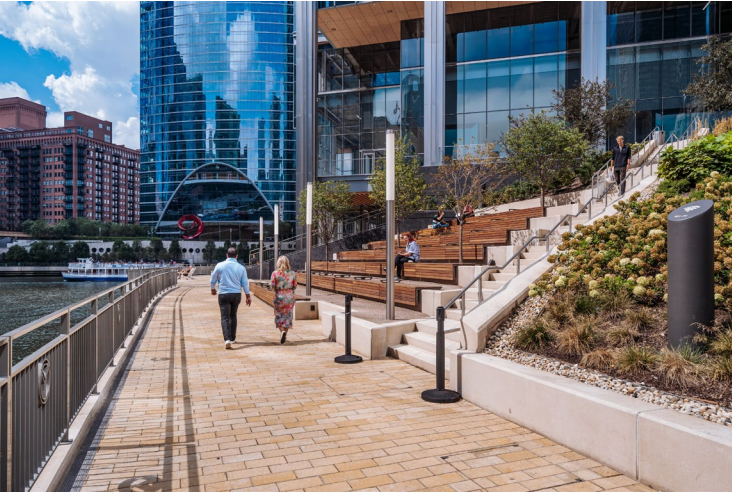
Conference Center

Conference Center Features

- Located on the 4th floor, offering a modern space for meetings, trainings, and events
- Accommodates up to ~50 attendees with flexible layouts (boardroom, classroom, theater-style)
- Fully equipped with AV technology, presentation tools, and conferencing capabilities
- Includes access to adjacent lounge areas for breakout space and informal gatherings
- Reservable through the building app with hourly and full-day options

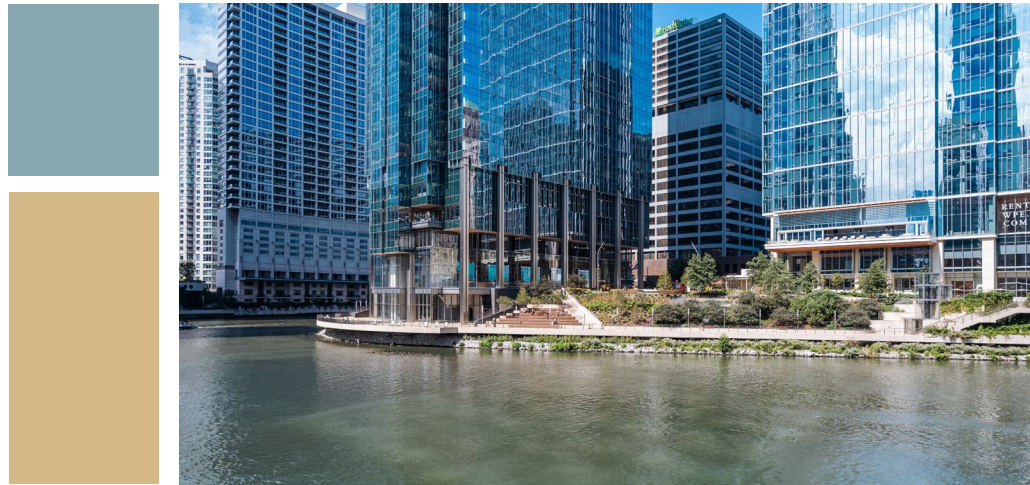
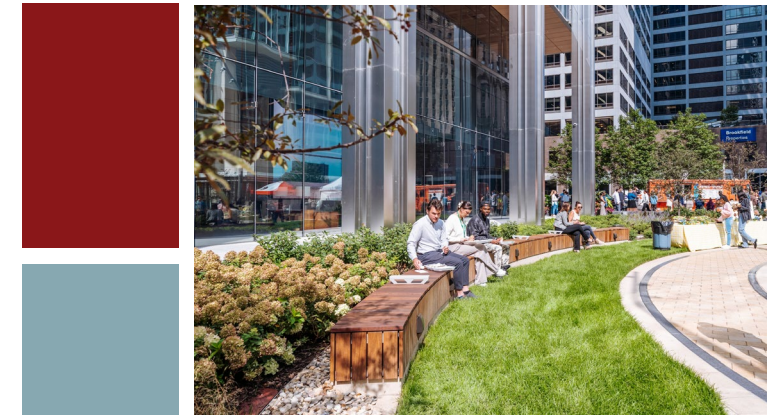


Wolf Point Plaza Park & Riverwalk



Wolf Point Park & Riverwalk

- Private outdoor park open daily from 6:00AM - 11:00PM
- Direct access to the Chicago Riverwalk and outdoor seating areas
- Ideal space for breaks, informal meetings, and wellness activities
- Maintained as a clean, quiet environment (no smoking, alcohol, or skateboards)
- Tenant-focused amenity supporting outdoor work-life balance



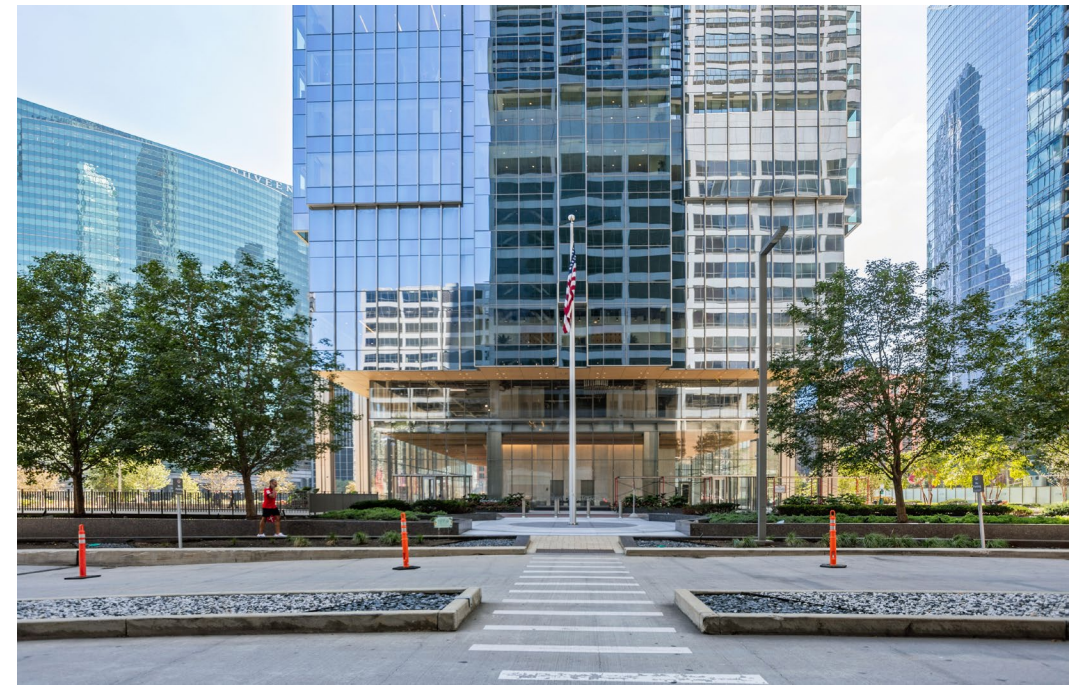
Transportation Amenities

Wolf Point Garage

- 6-level underground parking garage with approximately 490 spaces
- Open 24/7 with daily and monthly parking options
- Managed via iParkit app for reservations and visitor access
- Includes EV charging stations with app-based usage
- Convenient on-site access directly into the building

Bike Room Access

- Secure bike storage on B1 level with controlled access
- Available 24/7 for tenants with completed waiver
- Supports bikes, e-bikes, and scooters (storage only, no charging permitted)
- Includes exterior racks and direct Riverwalk access routes



Concierge Services & Delivery

Food & Beverage

- Sweetgreen Outpost with app-based ordering and midday pickup
- Lunchdrop service for convenient group meal delivery
- Complimentary coffee available in tenant lounge areas
- Centralized pickup locations for daily food programs
- Food trucks & tenant events coordinated at Plaza Park

Additional Services & Features

- “Here by Hines” mobile app allows tenants to reserve amenities, manage services, and access real-time building updates
- Messenger Center handles internal package delivery and routing
- Greener Cleaner dry cleaning with locker-based pickup/drop-off
- Weekly on-site shoe shine service on B1 level
- UPS and USPS drop boxes with daily mail service
- 24/7 security and building staff support for tenant assistance

Coming Soon...

- Riverwalk & lobby level restaurant spaces





333 WOLF POINT PLAZA
CHICAGO

Hines