

FOR SALE

ADAPTABLE BUILDING WITH AMPLE PARKING

962 EAST BRIGHTON AVE.
SYRACUSE, NY 13205



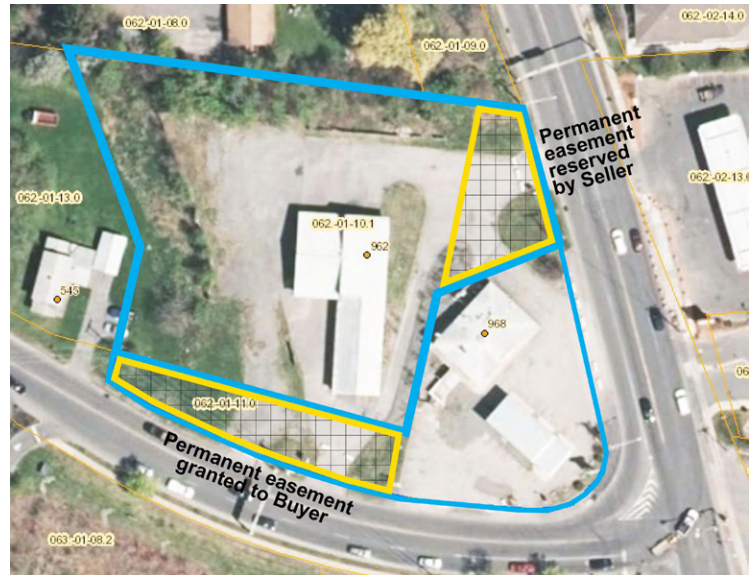
PROPERTY FEATURES

- + 5,200 sq. ft. metal building
- + 1.3 acre lot
- + At intersection of East Brighton Ave. and East Seneca Tpke.
- + High daily traffic volume
- + Major commuter route
- + Immediate access to I-81 & I-481
- + Business A zoning allows a variety of uses: retail, office, service, light industrial, medical, restaurant

Traffic Counts

E. Brighton Ave.	16,716±
E. Seneca Tpke.	16,989±

Source: NYS DOT 2015 AADT



BORDERS FOR REPRESENTATION PURPOSES ONLY.
FOR EXACT DIMENSIONS, REFER TO DEED AND SURVEY



CONTACT EXCLUSIVE AGENT

ED KIESA, CCIM

Senior Broker
+1 315 422 4200
ed.kiesa@cbre-syr.com

CBRE | SYRACUSE

Nettleton Commons
313 E. Willow St., Ste. 202
Syracuse, NY 13203

© 2018 CB Richard Ellis/Syracuse, N.Y., LLC. All rights reserved. This information has been obtained from sources believed reliable, but has not been verified for accuracy or completeness. You should conduct a careful, independent investigation of the property and verify all information. Any reliance on this information is solely at your own risk. Photos herein are the property of their respective owners. Use of these images without the express written consent of the owner is prohibited.

www.cbre.com/syracuse

CBRE | Syracuse

Part of the CBRE affiliate network

FOR SALE ADAPTABLE BUILDING

962 EAST BRIGHTON AVE.
SYRACUSE, NY 13205

AERIAL SHOWING SURROUNDING BUSINESSES/RESIDENCES

