

Field Office Available Space
WEST BUILDING
 2035 NW Front Avenue

SECOND FLOOR

Suite 202 W	2,284 RSF
Suite 204 W	8,333 RSF
Suite 206 W	3,729 RSF

DAVID SQUIRE, SIOR
 503.972.5505
 david.squire@nmrk.com

JOSH SCHWEITZ
 503.972.5530
 josh.schweitz@nmrk.com

TRAVIS PARROTT
 503.972.5535
 travis.parrott@nmrk.com

TROZELL BENWARE
 971.266.4956
 trozell.benware@nmrk.com

Suites 202, 206, 204W contiguous to 14,346 RSF



Field Office Available Space
WEST BUILDING
2035 NW Front Avenue

FOURTH FLOOR

Suite 400 W 33,004 RSF

DAVID SQUIRE, SIOR
503.972.5505
david.squire@nmrk.com

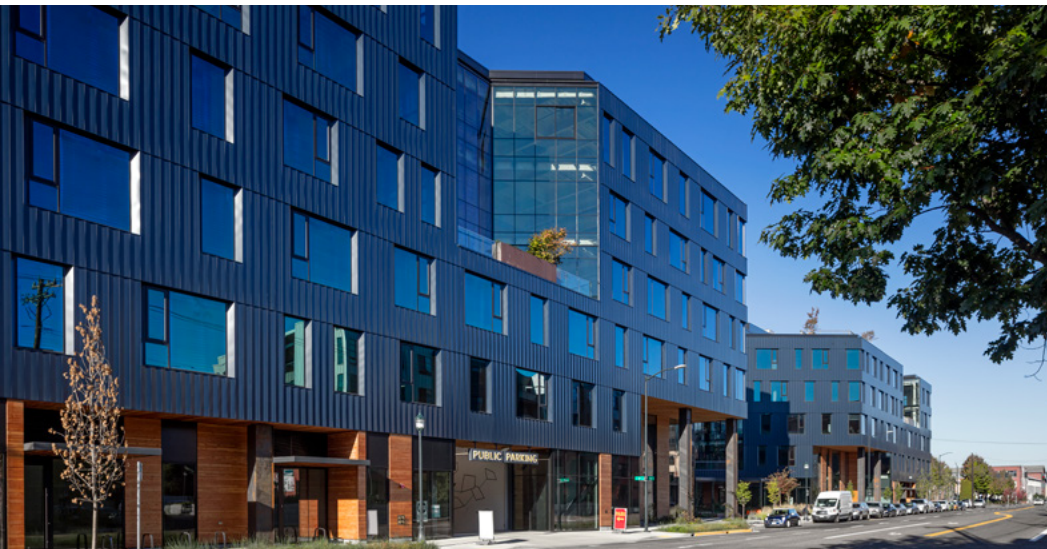
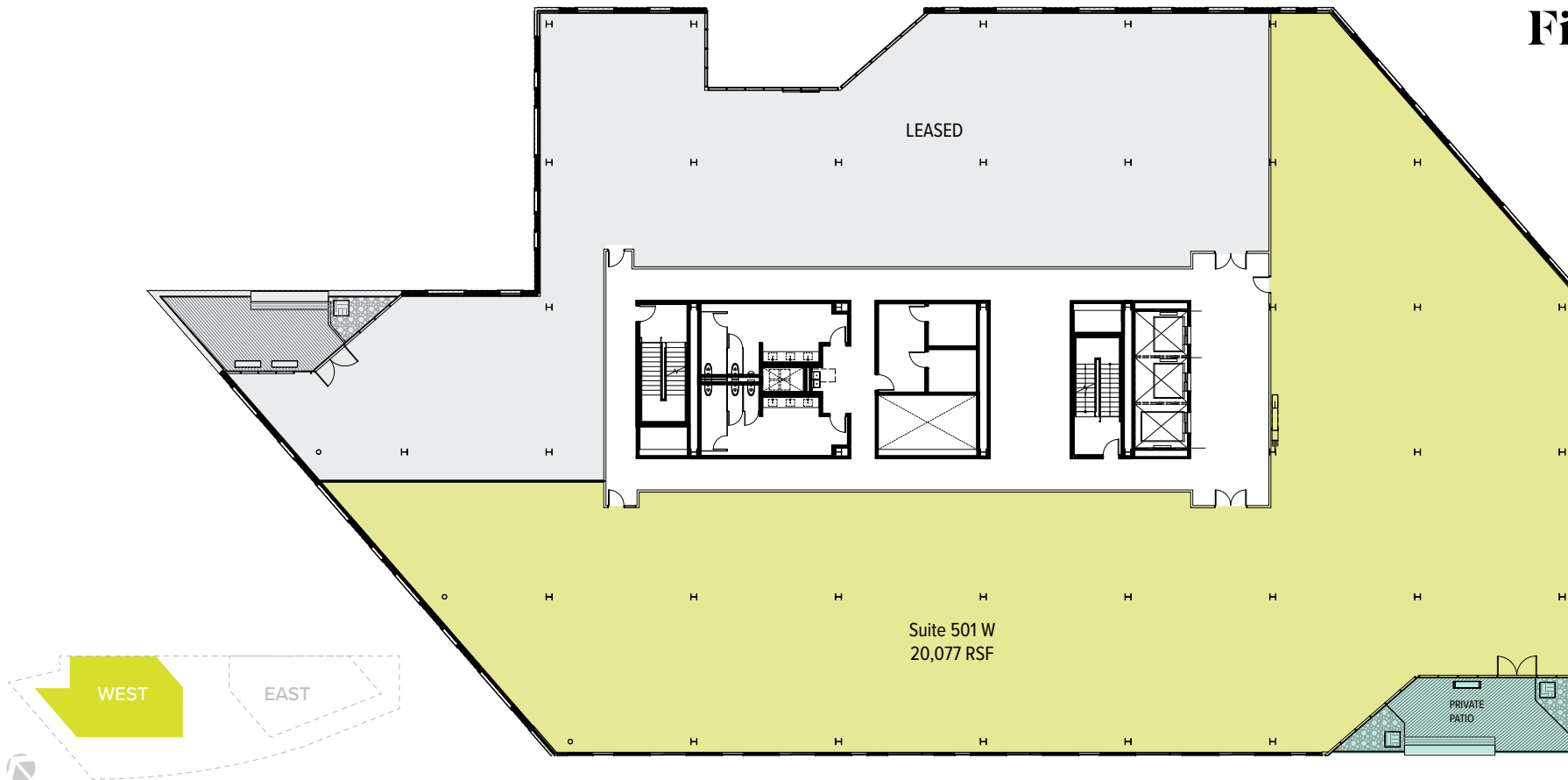
JOSH SCHWEITZ
503.972.5530
josh.schweitz@nmrk.com

TRAVIS PARROTT
503.972.5535
travis.parrott@nmrk.com

TROZELL BENWARE
971.266.4956
trozell.benware@nmrk.com

Suites 400, 501 and 600 - 54,279 to 73,768 RSF Contiguous

NEWMARK



Field Office Available Space WEST BUILDING 2035 NW Front Avenue

FIFTH FLOOR

Suite 501 W 21,276 RSF

DAVID SQUIRE, SIOR
503.972.5505
david.squire@nmrk.com

JOSH SCHWEITZ
503.972.5530
josh.schweitz@nmrk.com

TRAVIS PARROTT
503.972.5535
travis.parrott@nmrk.com

TROZELL BENWARE
971.266.4956
trozell.benware@nmrk.com

Suites 400, 501 and 600 - 54,279 to 73,768 RSF Contiguous

NEWMARK



Field Office Available Space
WEST BUILDING
2035 NW Front Avenue

SIXTH FLOOR

Suite 600 W 19,488 RSF

DAVID SQUIRE, SIOR
503.972.5505
david.squire@nmrk.com

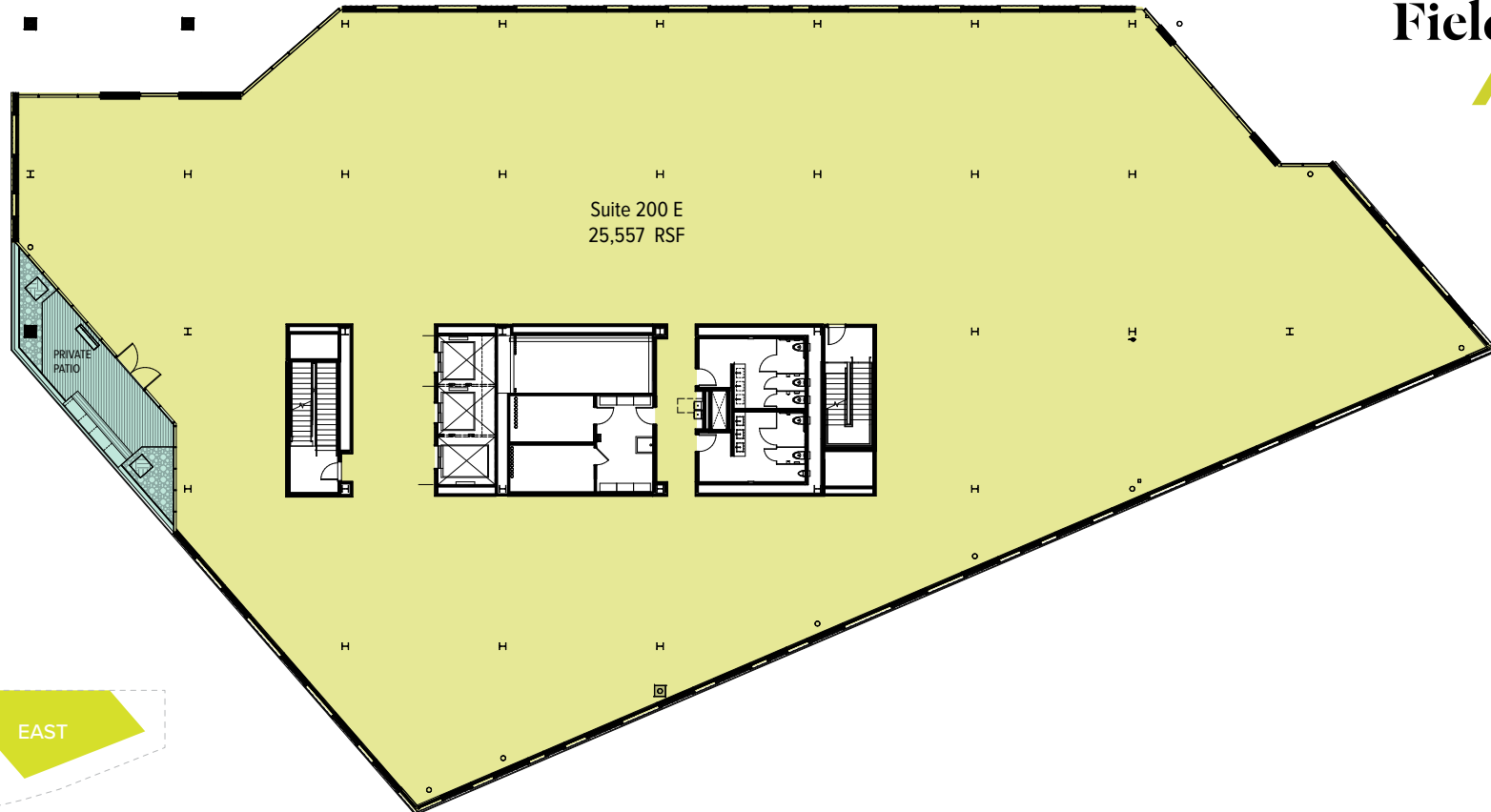
JOSH SCHWEITZ
503.972.5530
josh.schweitz@nmrk.com

TRAVIS PARROTT
503.972.5535
travis.parrott@nmrk.com

TROZELL BENWARE
971.266.4956
trozell.benware@nmrk.com

Suites 400, 501 and 600 - 54,279 to 73,768 RSF Contiguous

NEWMARK



Field Office Available Space
EAST BUILDING
1895 NW Front Avenue

SECOND FLOOR

Suite 200 E 25,557 RSF

DAVID SQUIRE, SIOR
503.972.5505
david.squire@nmrk.com

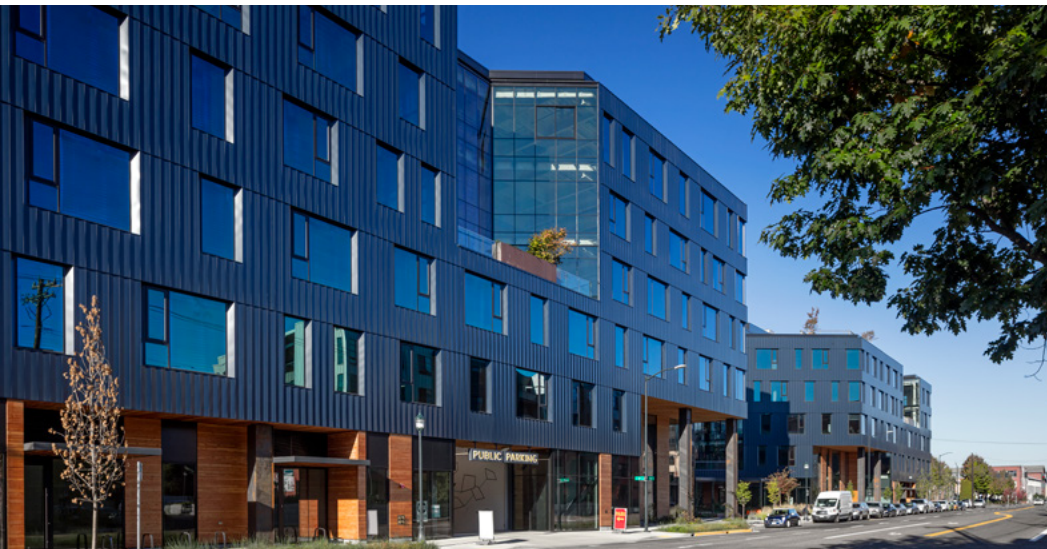
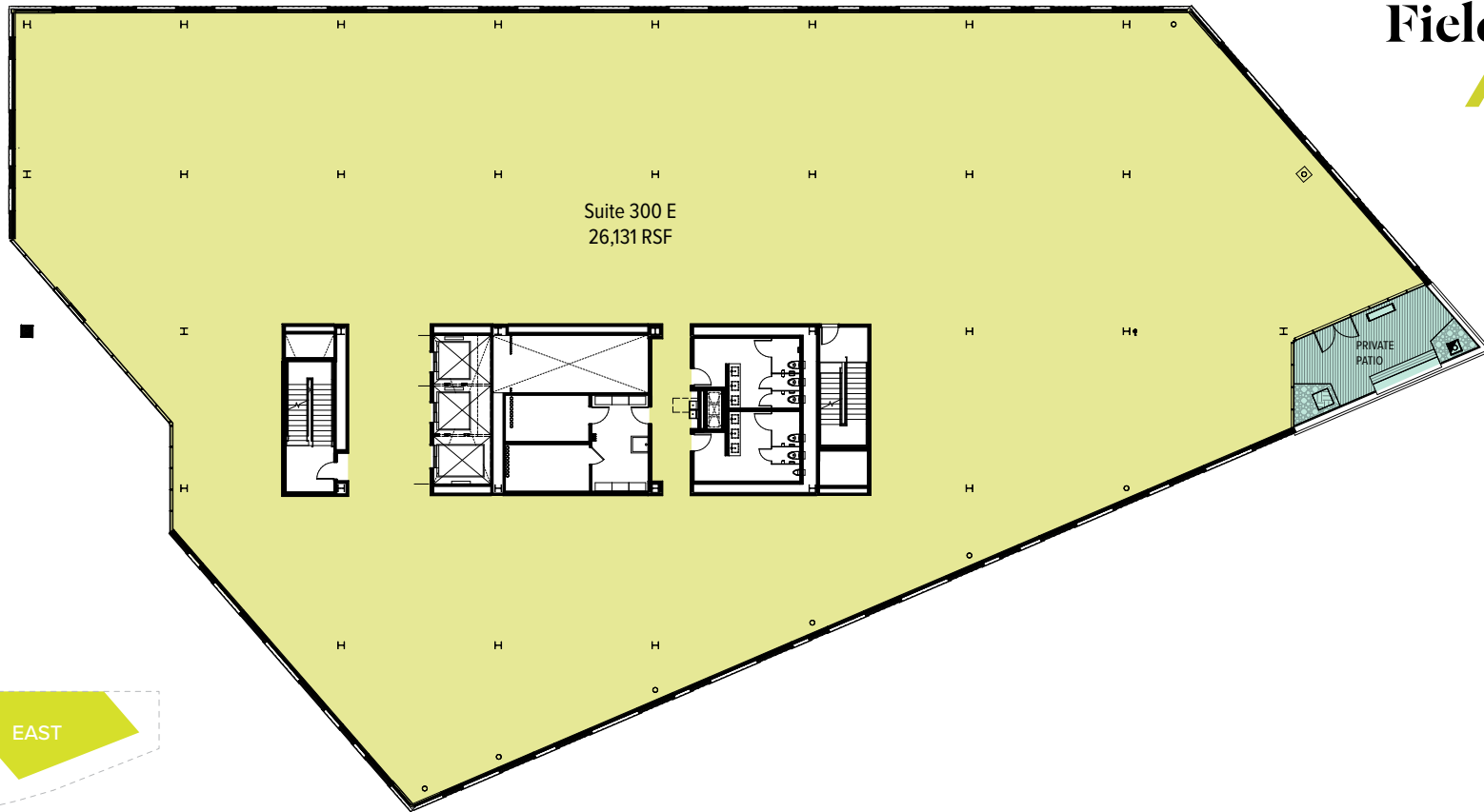
JOSH SCHWEITZ
503.972.5530
josh.schweitz@nmrk.com

TRAVIS PARROTT
503.972.5535
travis.parrott@nmrk.com

TROZELL BENWARE
971.266.4956
trozell.benware@nmrk.com

Suites 200, 300, 400, 500 & 600 - 119,382 RSF Contiguous

NEWMARK



Field Office Available Space
EAST BUILDING
1895 NW Front Avenue

THIRD FLOOR

Suite 300 E 26,131 RSF

DAVID SQUIRE, SIOR
503.972.5505
david.squire@nmrk.com

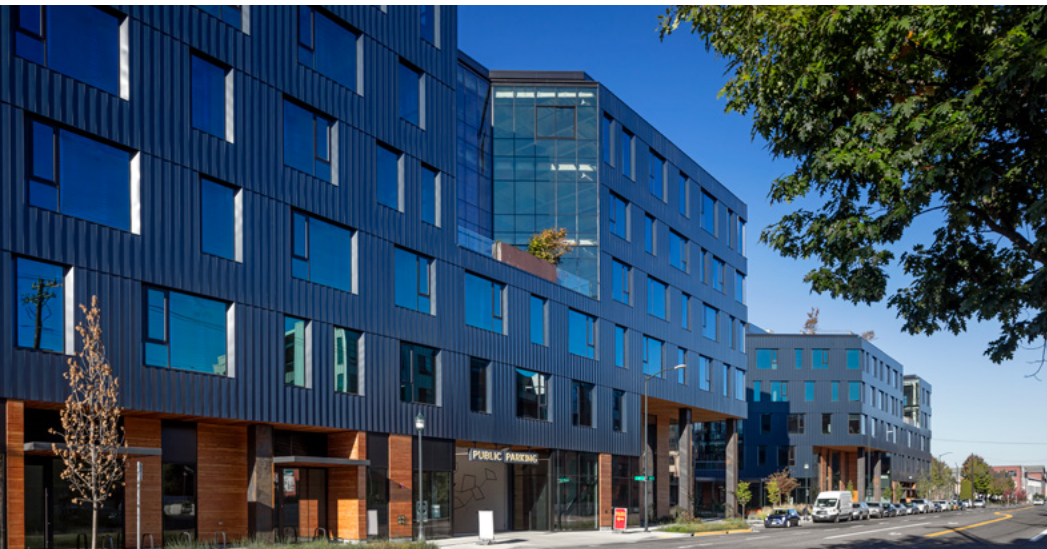
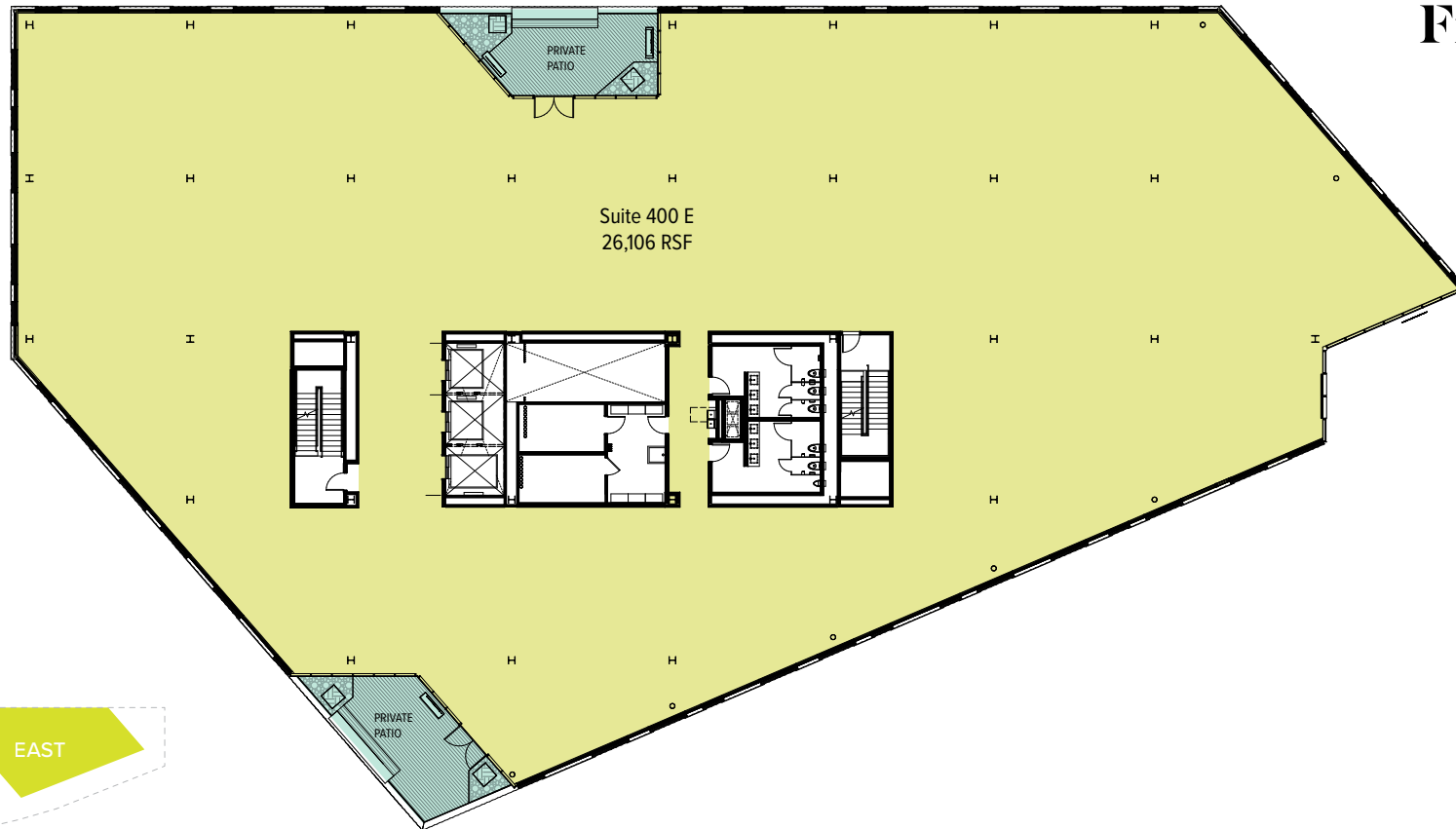
JOSH SCHWEITZ
503.972.5530
josh.schweitz@nmrk.com

TRAVIS PARROTT
503.972.5535
travis.parrott@nmrk.com

TROZELL BENWARE
971.266.4956
trozell.benware@nmrk.com

Suites 200, 300, 400, 500 & 600 - 119,382 RSF Contiguous

NEWMARK



Field Office Available Space
EAST BUILDING
1895 NW Front Avenue

FOURTH FLOOR

Suite 400 E 26,106 RSF

DAVID SQUIRE, SIOR
503.972.5505
david.squire@nmrk.com

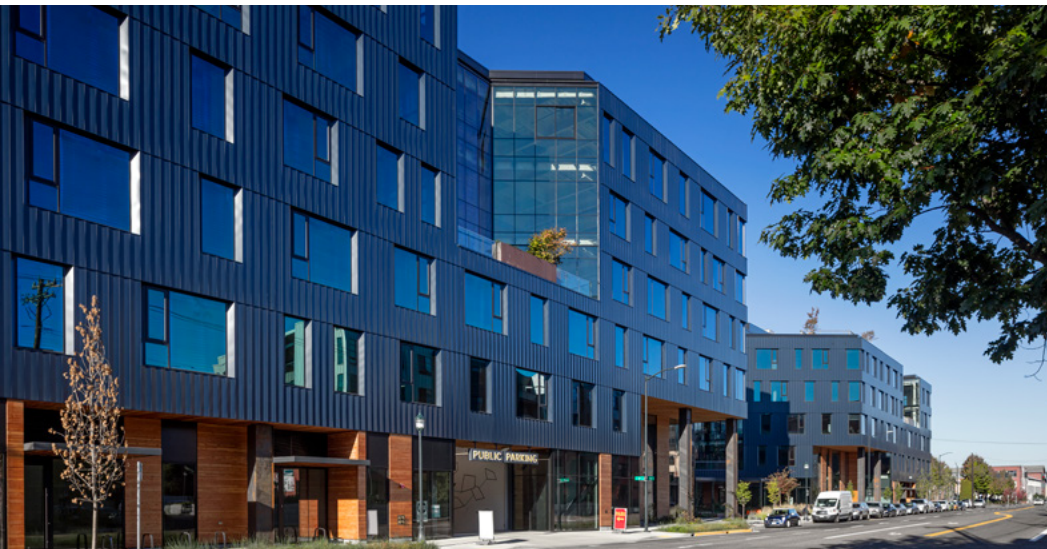
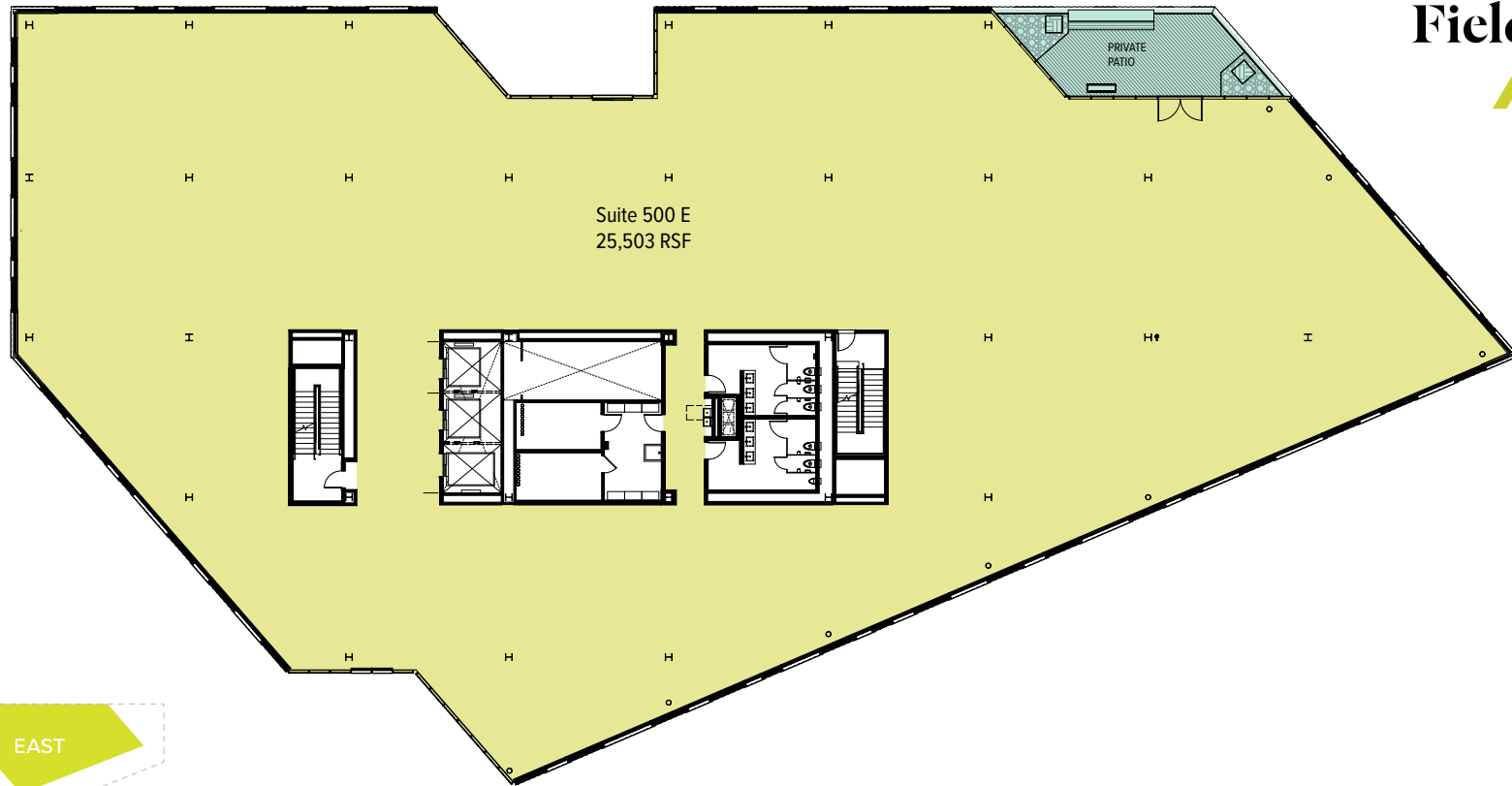
JOSH SCHWEITZ
503.972.5530
josh.schweitz@nmrk.com

TRAVIS PARROTT
503.972.5535
travis.parrott@nmrk.com

TROZELL BENWARE
971.266.4956
trozell.benware@nmrk.com

Suites 200, 300, 400, 500 & 600 - 119,382 RSF Contiguous

NEWMARK



Field Office Available Space
EAST BUILDING
1895 NW Front Avenue

FIFTH FLOOR

Suite 500 E 25,503 RSF

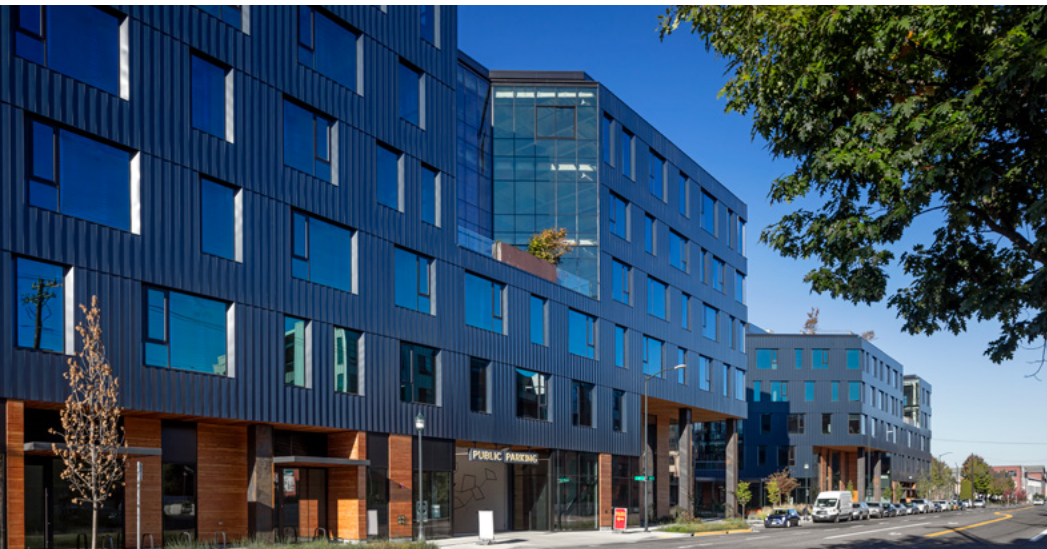
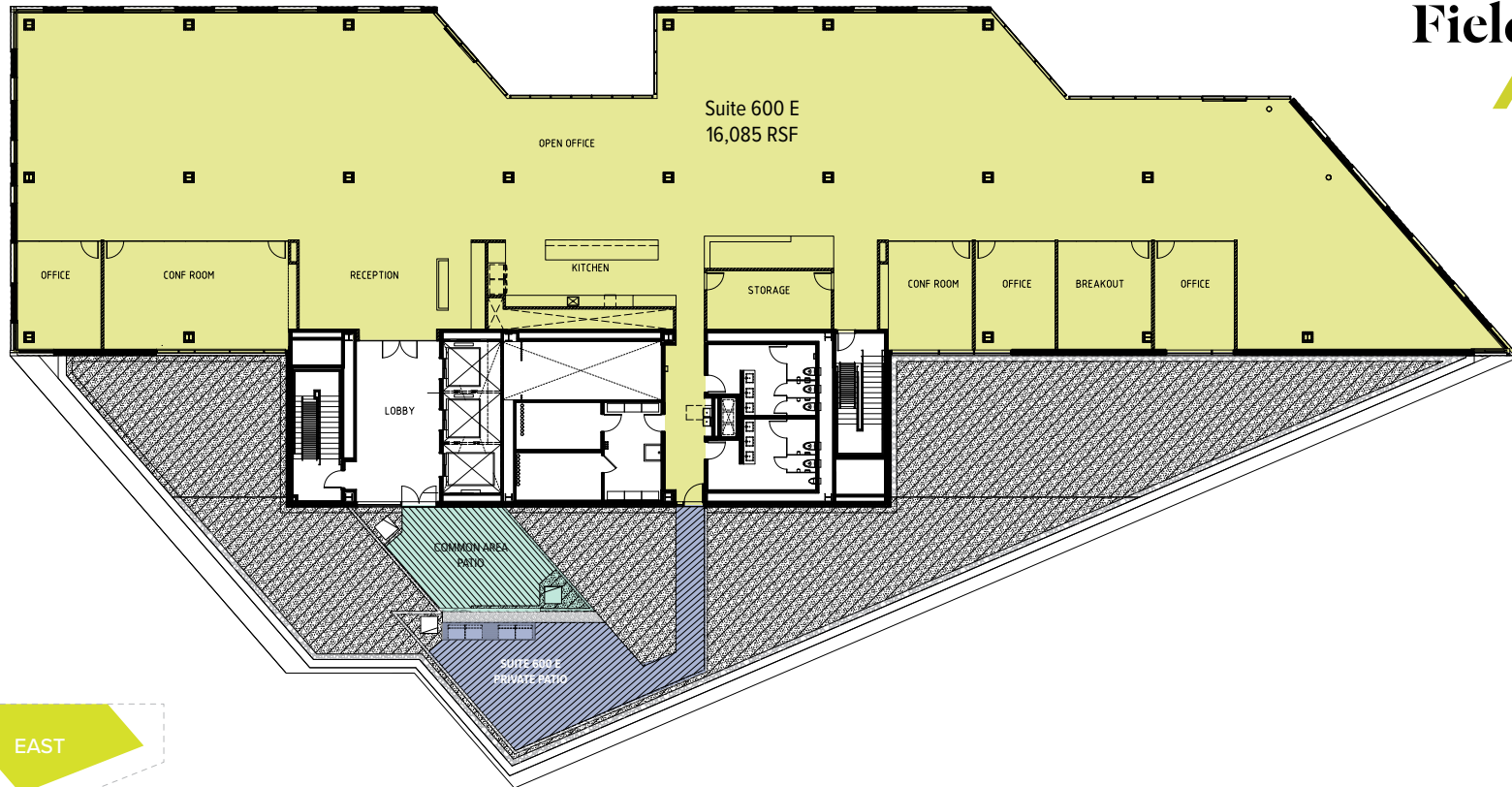
DAVID SQUIRE, SIOR
503.972.5505
david.squire@nmrk.com

JOSH SCHWEITZ
503.972.5530
josh.schweitz@nmrk.com

TRAVIS PARROTT
503.972.5535
travis.parrott@nmrk.com

TROZELL BENWARE
971.266.4956
trozell.benware@nmrk.com

Suites 200, 300, 400, 500 & 600 - 119,382 RSF Contiguous



Field Office Available Space
EAST BUILDING
1895 NW Front Avenue

**SIXTH FLOOR
SPEC SUITE**

Suite 600 E 16,085 RSF

DAVID SQUIRE, SIOR
503.972.5505
david.squire@nmrk.com

JOSH SCHWEITZ
503.972.5530
josh.schweitz@nmrk.com

TRAVIS PARROTT
503.972.5535
travis.parrott@nmrk.com

TROZELL BENWARE
971.266.4956
trozell.benware@nmrk.com

Suites 200, 300, 400, 500 & 600 - 119,382 RSF Contiguous

SIXTH FLOOR SPEC SUITE

Suite 600 E – 16,085 RSF

EAST BUILDING
1895 NW Front Avenue

Field Office
— Cultivate culture



Open Collaboration



Extensive Window Line

NEWMARK



Private Patio

SIXTH FLOOR SPEC SUITE

Suite 600 E – 16,085 RSF

EAST BUILDING
1895 NW Front Avenue

Field Office
— Cultivate culture



Flexible Spaces

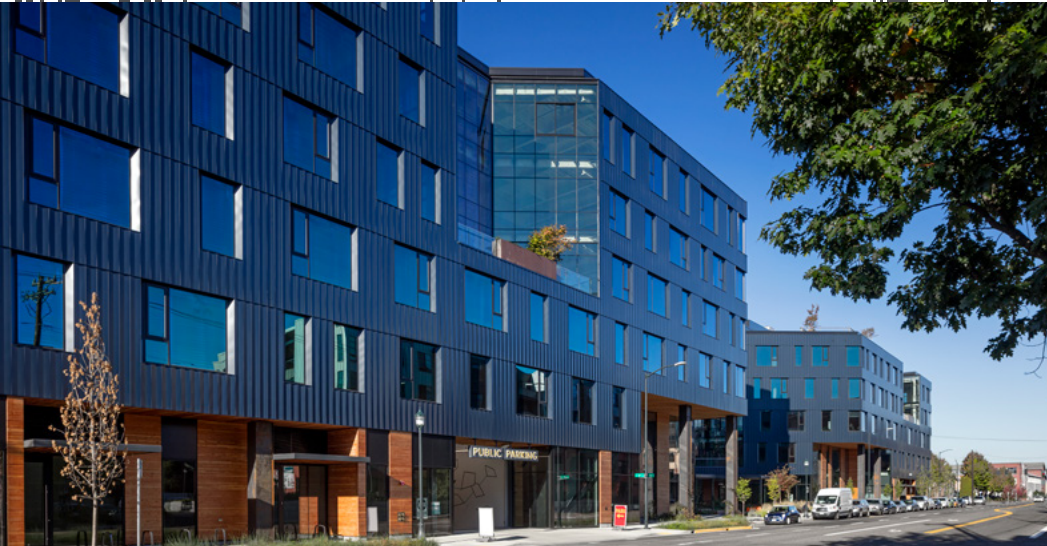
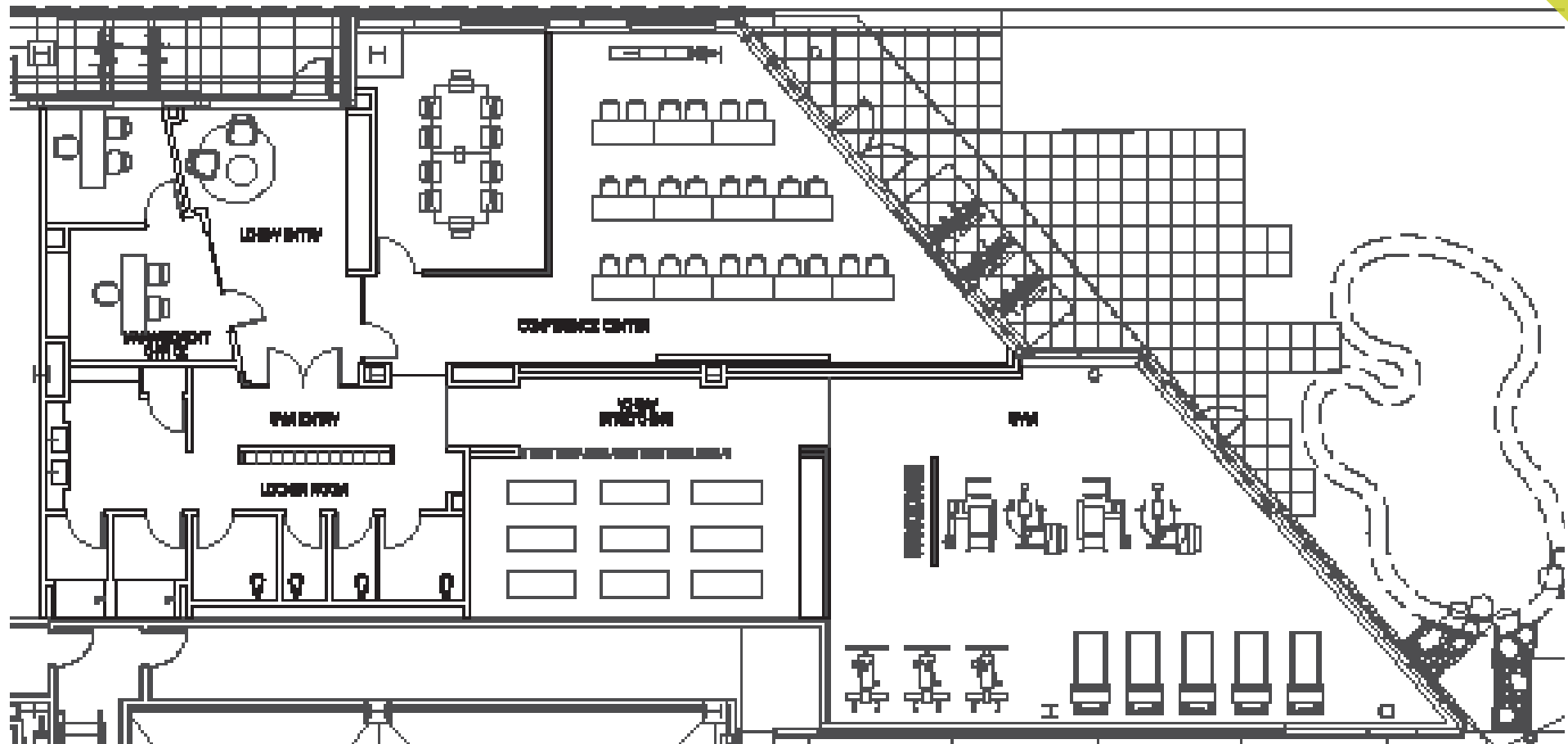


Modern Kitchenette

NEWMARK



Conference Rooms



Field Office Available Space
EAST BUILDING
 1895 NW Front Avenue

CONFERENCE CENTER
FITNESS STUDIO

DAVID SQUIRE, SIOR
 503.972.5505
 david.squire@nmrk.com

JOSH SCHWEITZ
 503.972.5530
 josh.schweitz@nmrk.com

TRAVIS PARROTT
 503.972.5535
 travis.parrott@nmrk.com

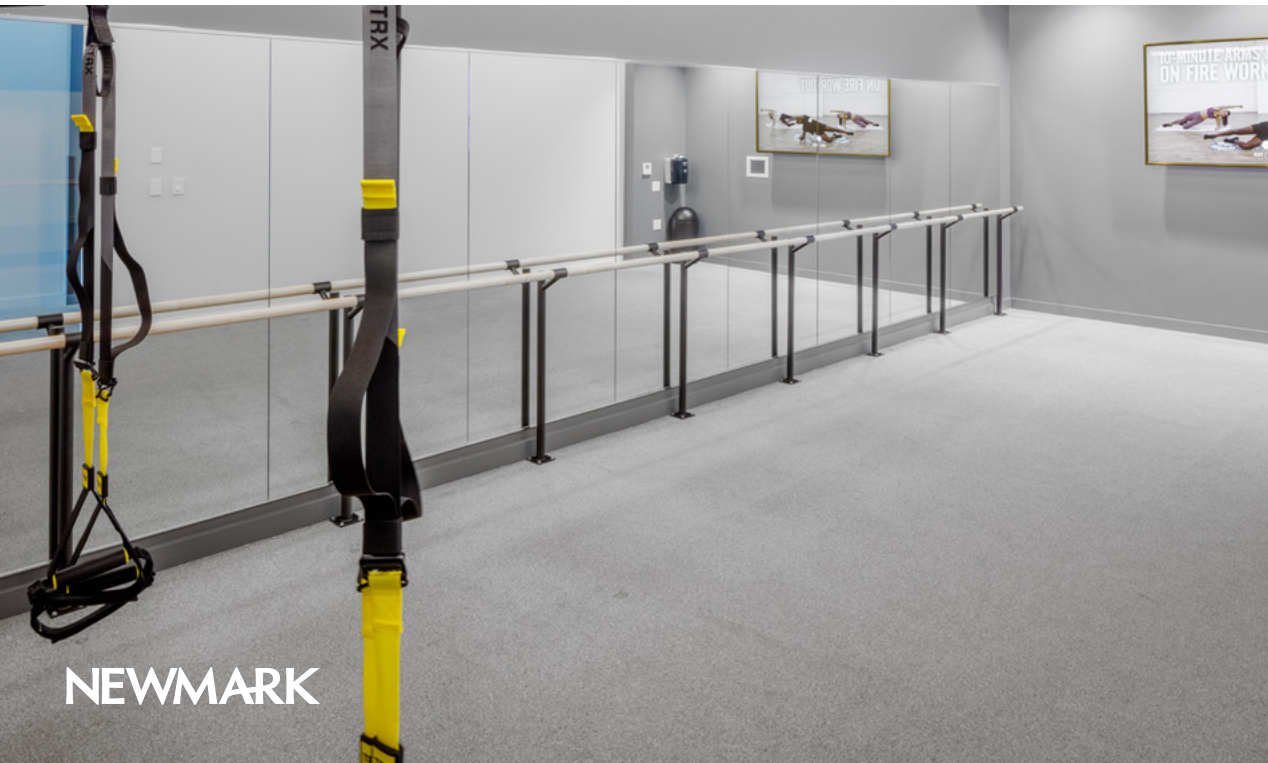
TROZELL BENWARE
 971.266.4956
 trozell.benware@nmrk.com



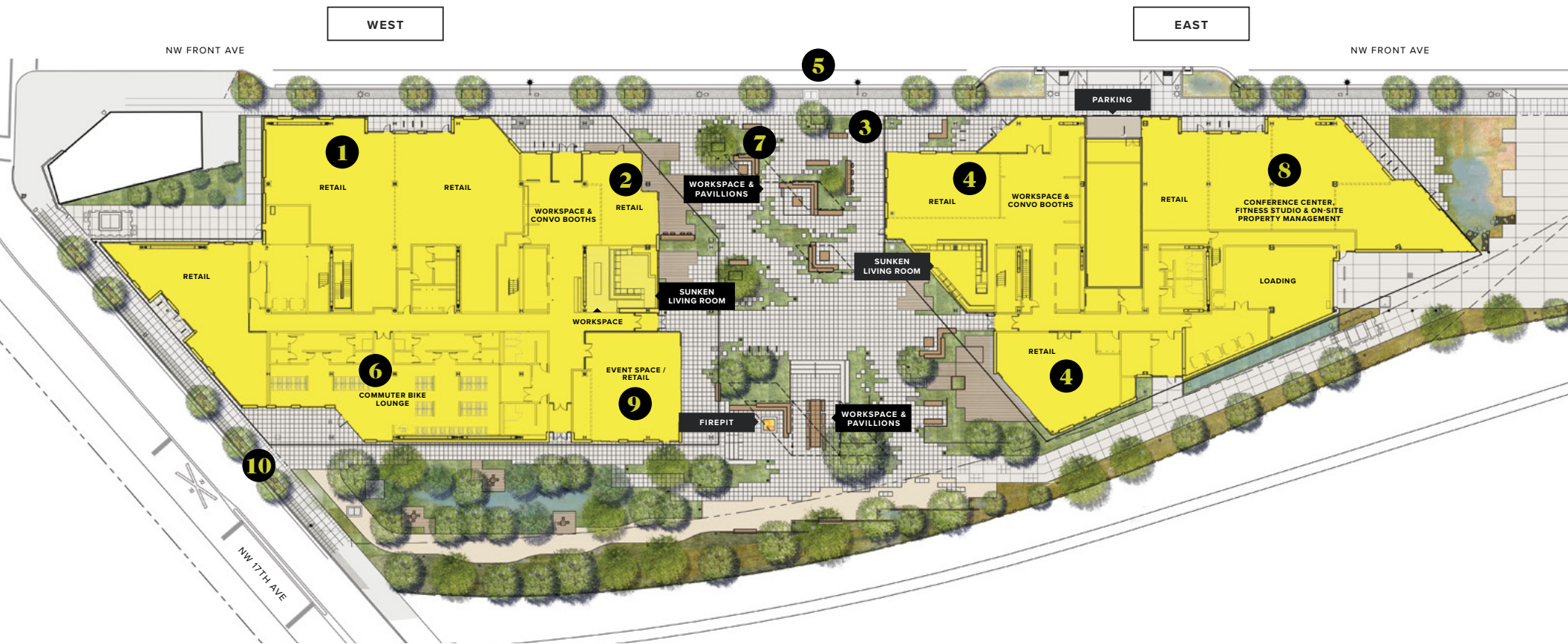
CONFERENCE CENTER & FITNESS STUDIO

EAST BUILDING
1895 NW Front Avenue

Field Office
Cultivate culture



NEWMARK



Site Plan.



- 1. Children's Garden Childcare
- 2. On-site Cafe
- 3. Biketown hub
- 4. Curated Retail
- 5. Ride share pick up / drop off point
- 6. Fitness Studio & Conference Center
- 7. Electric Scooter Corrals
- 8. Conference Center, Fitness Studio & On-site Property Management
- 9. Forth Mobility
- 10. Shuttle pick up / drop off point