



1099 SNEATH

NEW BUILD-OUT | 7,140 RSF

SUBLEASE THROUGH FEBRUARY 2027

Maurice Spikes

Senior Managing Director

m 510.356.8492

Maurice.Spikes@nmrk.com

CA RE LIC #02001506

Clayton Jones

Senior Managing Director

m 650.473.4774

Clayton.Jones@nmrk.com

CA RE LIC #0214728

Lauren Cicisly

Associate

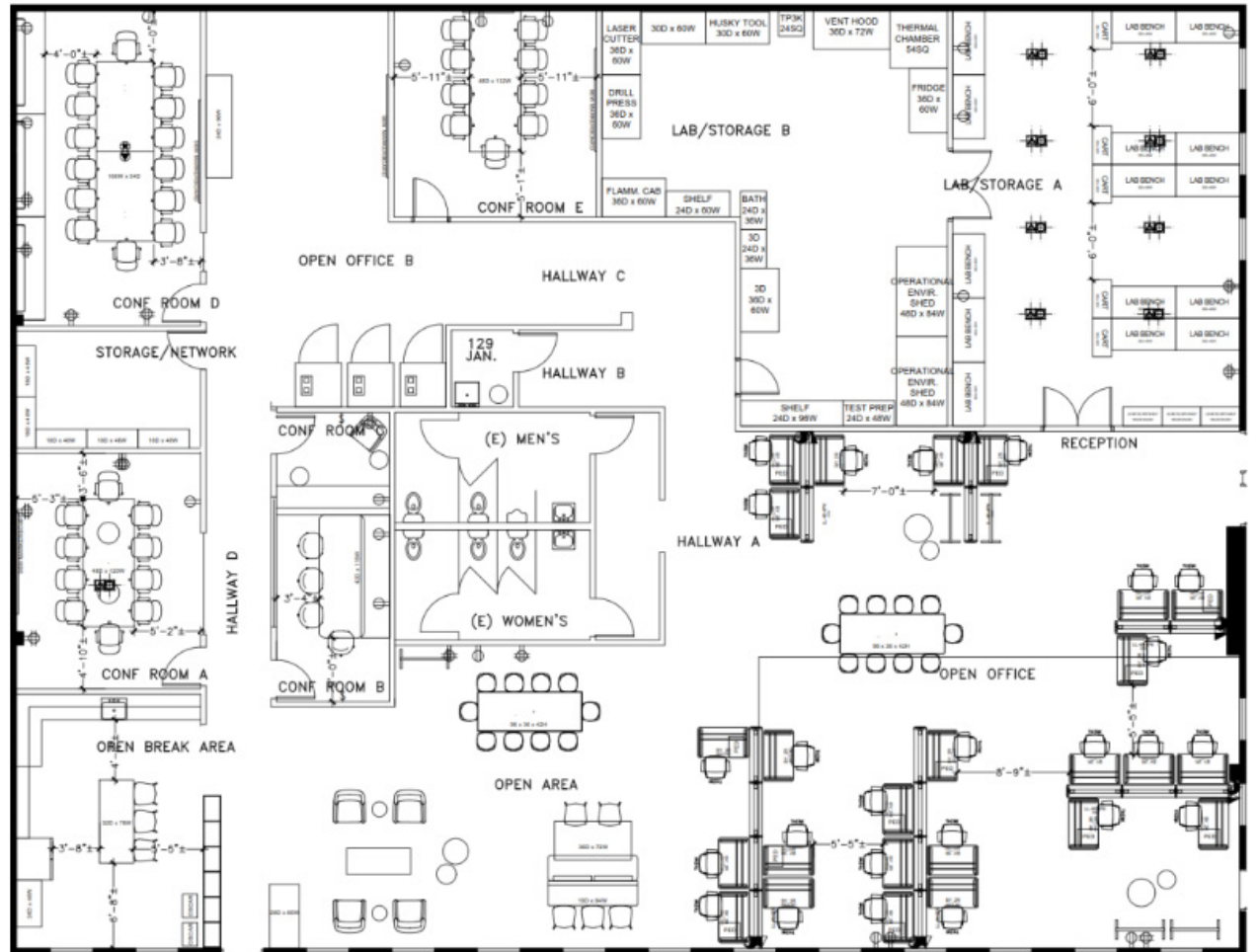
m 408.310.9243

Lauren.Cicisly@nmrk.com

CA RE LIC #02166803

7,140 RSF

- 2 Large Hardware Labs
- 5 Conference Rooms
- Open Office Area
- Potential Plug & Play Opportunity
- All-Hands Kitchen Area
- Dog Friendly
- On-Site Parking
- Available in 30-60 Days





OPEN OFFICE AREA



KITCHEN AREA



HARDWARE LAB



CONFERENCE ROOMS

1099 SNEATH

Maurice Spikes | Senior Managing Director | m 510.356.8492 | Maurice.Spikes@nmrk.com | CA RE LIC #02001506

Clayton Jones | Senior Managing Director | m 650.473.4774 | Clayton.Jones@nmrk.com | CA RE LIC #02014728

Lauren Cicisly | Associate | m 408.310.9243 | Lauren.Cicisly@nmrk.com | CA RE LIC #02166803

NEWMARK

ONE SANSOME STREET, FLOOR 41 SAN FRANCISCO, CA 94104

The distributor of this communication is performing acts for which a real estate license is required. The information contained herein has been obtained from sources deemed reliable but has not been verified and no guarantee, warranty or representation, either express or implied, is made with respect to such information. Terms of sale or lease and availability are subject to change or withdrawal without notice.