



Luxury Retail Opportunity at the Corner of
Fifth Avenue & 60th Street

A BRAND NEW LOOK

Space will be delivered with a new LPC approved storefront featuring enlarged windows and enhanced signage



COMMANDING PRESENCE

185 FT of wraparound frontage at the epicenter of New York's luxury corridor



THE NEW 785 FIFTH AVENUE RETAIL

Interior view showcasing storefront upgrades



THE NEW 785 FIFTH AVENUE RETAIL

Light-filled interior with 17-FT ceilings



INCREDIBLE LOCATION

In the center of New York City's most prestigious neighborhood

Located one block from Apple's top grossing retail store

THE
PIERRE
HOTEL

785 FIFTH
AVENUE

METROPOLITAN
CLUB

THE
SHERRY-NETHERLAND
HOTEL

CHOCHENG

CIPRIANI

DELVAUX

DIOR

NRW
SUBWAY
ENTRANCE

CENTRAL
PARK

60TH STREET

FIFTH AVENUE

59TH STREET



GARAGE OPPORTUNITY

Potentail for dedicated parking garage on 60th Street

PARKING GARAGE



RETAIL FLOOR PLANS

GROUND FLOOR

Approximately 5,590 SF (*divisible*)

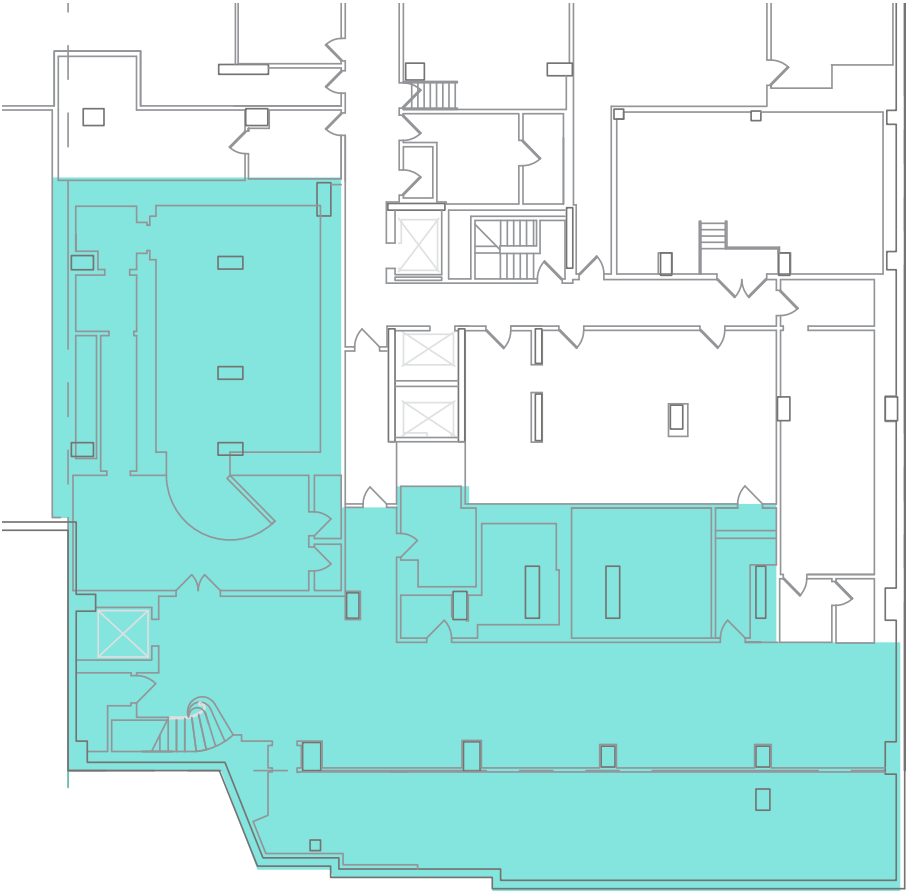
17' Ceilings



SELLING LOWER LEVEL

Approximately 6,025 SF

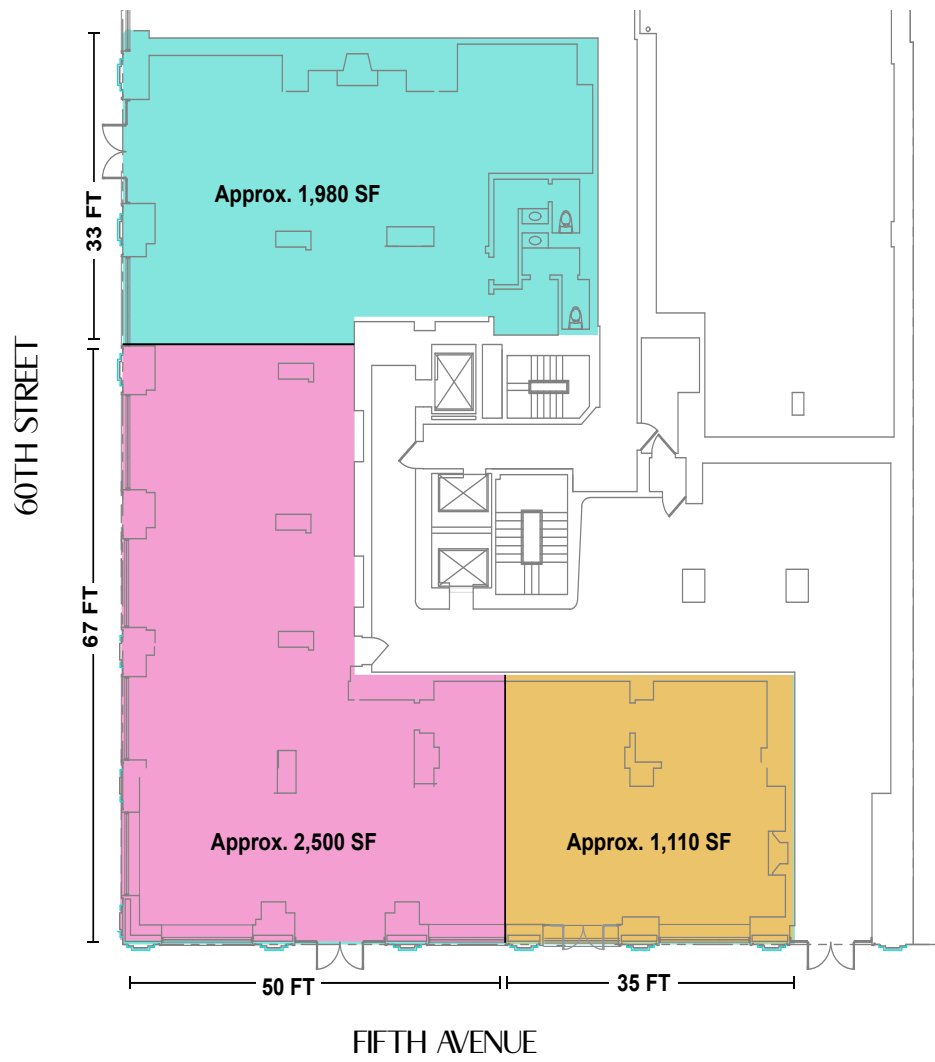
12 -13' Ceilings (slab-to-slab)



PROPOSED GROUND FLOOR DIVISIONS

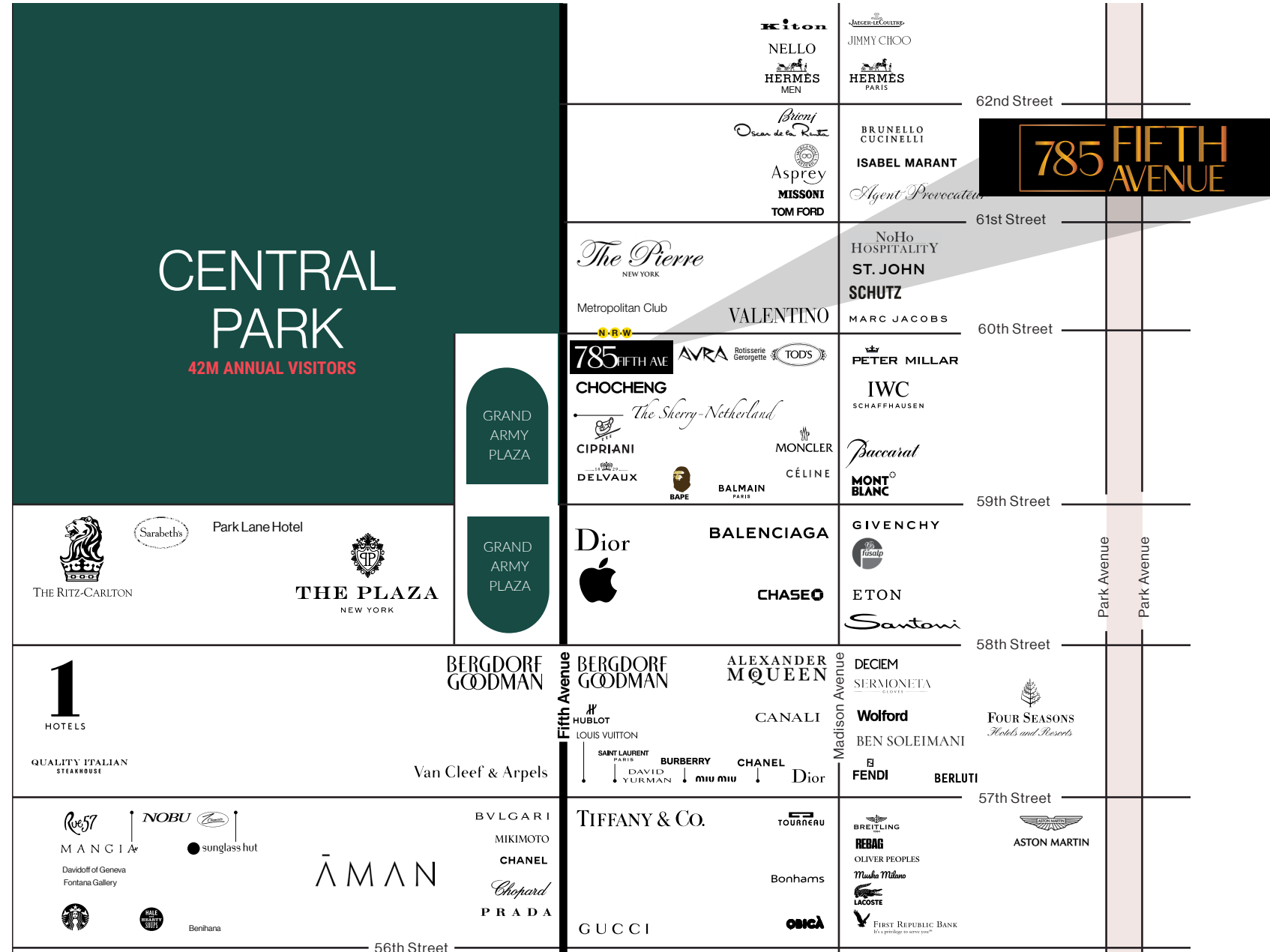
Contiguous Lower Level can connect with any portion of the Ground Floor

Alternate divisions considered



EXCEPTIONAL CO-TENANCY

Join Avra, Balenciaga, Apple, Dior, Cipriani, Valentino and more



785 FIFTH AVENUE



CONTACTS

Jeffrey D Roseman
jeffrey.roseman@nmrk.com
212.372.2430

Caleb Petersen
caleb.petersen@nmrk.com
212.351.9347

Drew Weiss
drew.weiss@nmrk.com
212.372.2473

NEWMARK

NEWMARK The information contained herein has been obtained from sources deemed reliable but has not been verified and no guarantee, warranty or representation, either express or implied, is made with respect to such information. Terms of sale or lease and availability are subject to change or withdrawal without notice.

nmrk.com