

FUSE

3401 Fairfax Drive



Linked by Purpose

Fuse is where bold ideas ignite and transformative solutions take shape. We connect visionary thinkers with world-class talent and industry partners to tackle the challenges that matter most.

Strategically located in the Rosslyn-Ballston corridor and in partnership with George Mason University, Fuse serves as a dynamic hub for innovators, researchers, and entrepreneurs to collaborate and thrive in a state-of-the-art trophy office environment.

Through integrated workspaces and curated programming, Fuse fosters the exchange of ideas and enables seamless collaboration between industry partners, and the broader innovation community—accelerating progress and driving meaningful change.

High Ceilings & Expansive Views / 9th Floor



Lounge & Terrace / 6th Floor

A Collaborative Alliance

As the #1 most innovative university in Virginia, George Mason brings its entrepreneurial spirit to Fuse with shared space dedicated to robotics, digital arts / multi-media, data collaboration, simulation, and more.

Tenants have direct access to:



~500 masters and doctorate degree candidates in computer science



Access to curated industry events



Government funded research programs



Entrepreneurial and small business support through Mason Enterprises



World-class faculty and technology lab facilities



One of the largest producers of tech talent in the region



Collaborative research and federal funding opportunities



Direct pipeline to interns



World-class convening spaces

Multiple Signage Opportunities



Premier Office Experience



Community Events



Unparalleled Features & Amenities

Building Advantages

- Generous ceiling heights (**13'4" slab to slab**) that offer an expansive feel and maximize natural light
- Multiple **signage** options for prime branding visibility
- **1.202 core factor** for efficient design
- Virtually **column-free** floors
- Space available built to **NISPOM standards**
- Destination dispatch elevators

Core of Collaboration

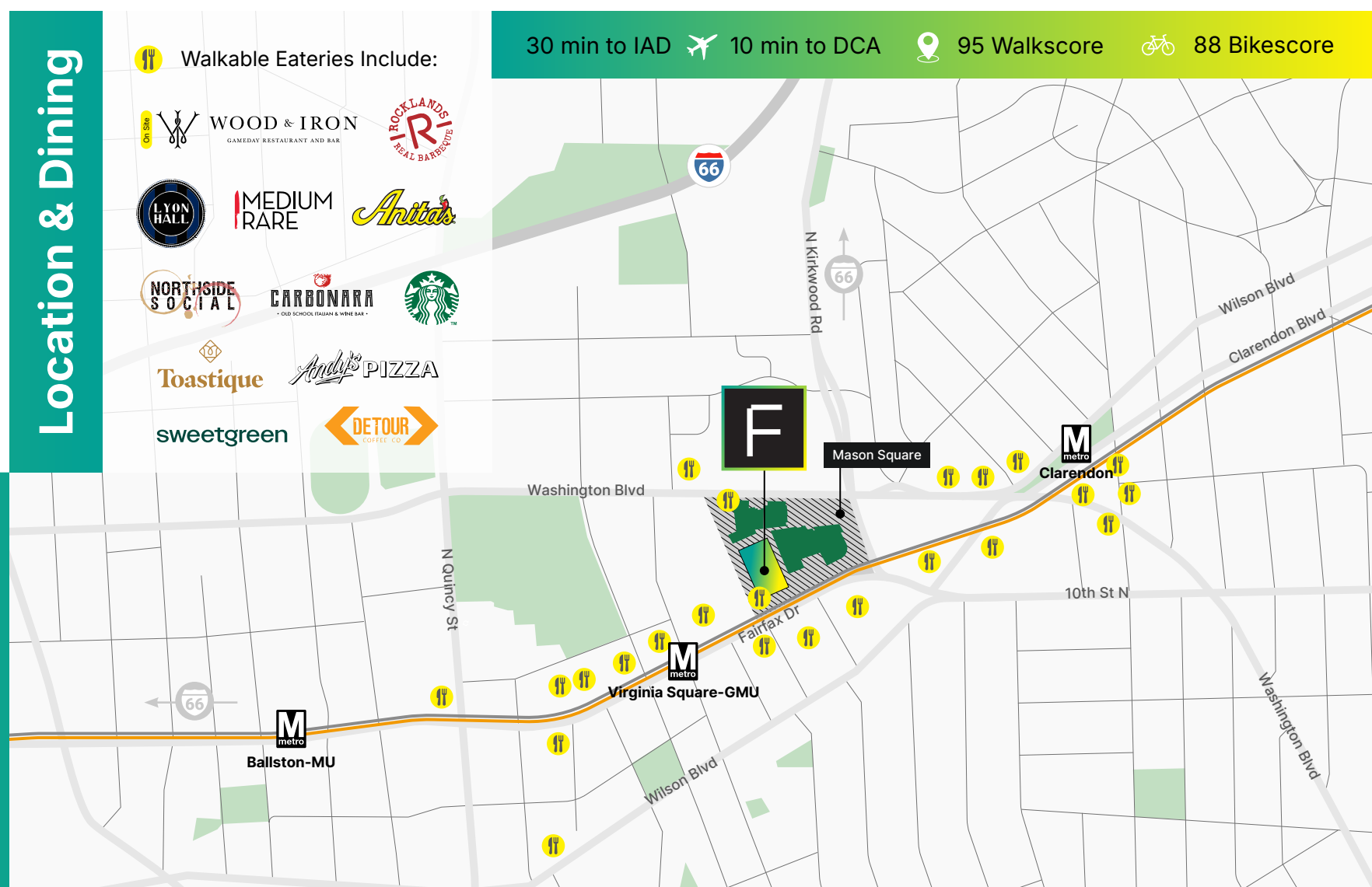
- Flexible collaborative common space
- Conference space for hosting live and hybrid events
- Large conference and event space to host **up to 750 people**
- Exceptional podcast studio
- Instant conference room booking with Fuse App

Convenience

- Office-to-parking access – **1.5 spaces/1,000 SF**
- Fast, reliable WiFi and 5G inside and outside
- Tech concierge service
- Easy access to I-66
- Two blocks from Metro
- Convenient commuting options (bike share, rideshare, metro, shuttles)

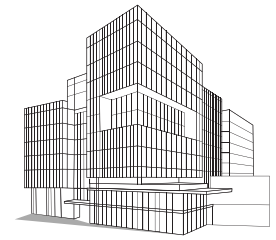
Healthy and Sustainable Lifestyle


- Fitness studio
- Bike rooms
- Spacious green rooftop deck areas and multiple terraces
- Convenient electric car charging stations
- Smart and green building technologies








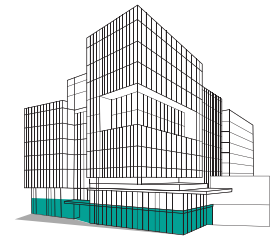
Availabilities



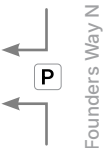
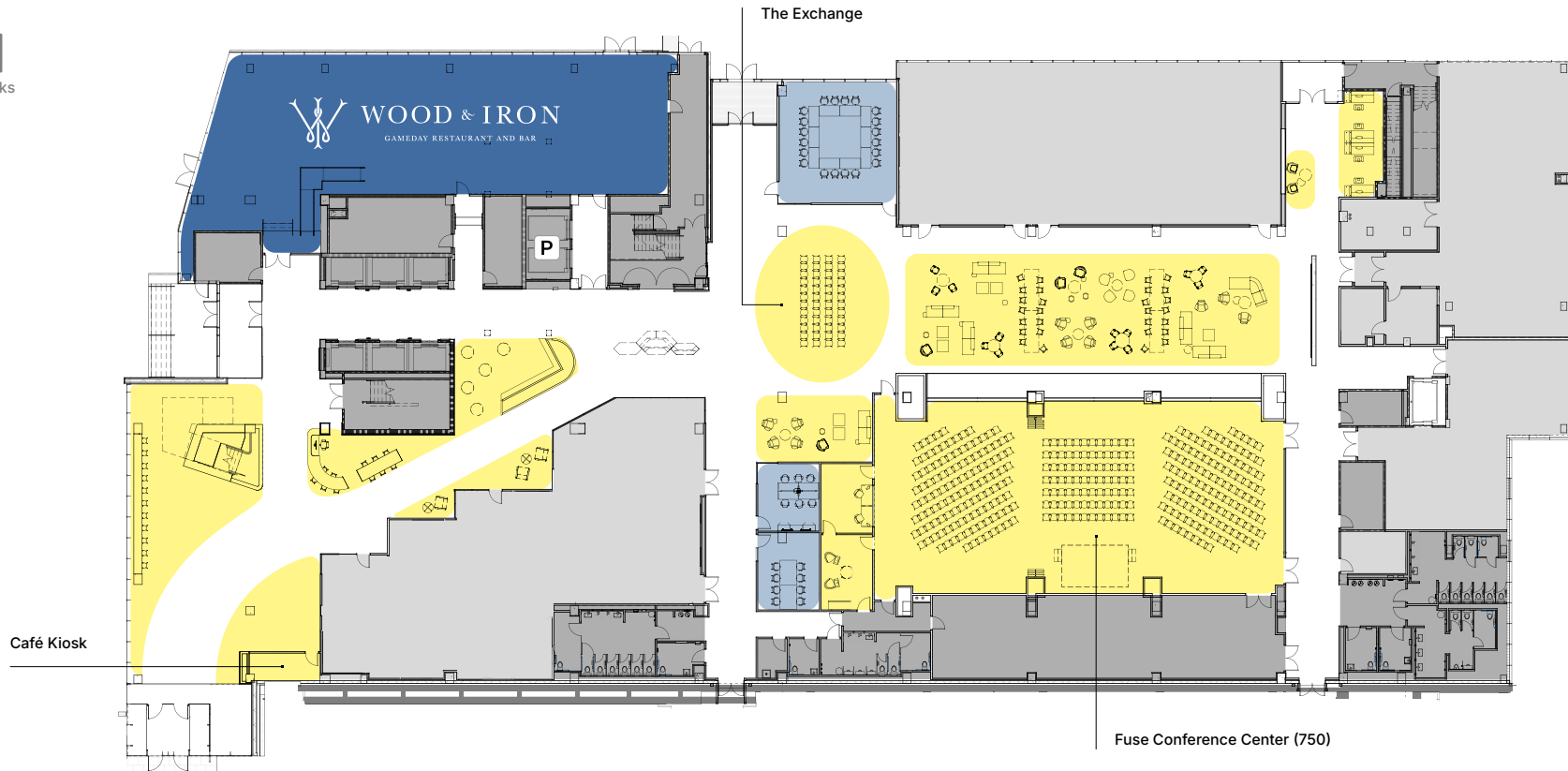
9	 SUITE 9201 26,725 SF			
8	SUITE 8201 17,835 SF		TERRACE	
7	SUITE 7200 10,111 SF	LOUNGE	TEAM ROOM	SUITE 7202 3,430 SF
6	SUITE 6200 10,069 SF	KITCHEN & BALCONY	LOUNGE	TEAM ROOMS
5	SUITE 5210 12,663 SF	CONFERENCE ROOM		
4	SUITE 4220 14,117 SF		LOUNGE	SUITE 4200 1,790 SF
3	KITCHEN	TEAM ROOMS		
2	CONFERENCE ROOMS	PODCAST STUDIO	LOUNGE	
1	WOOD & IRON RESTAURANT	CAFÉ KIOSK	LOUNGE	FUSE CONFERENCE CENTER (750)

 Available Office Space  Shared Tenant Amenity  Leased

1st Floor



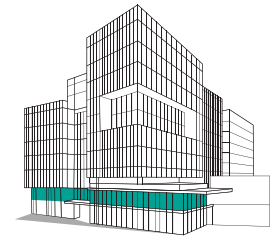
Fairfax Drive



Founders Way N

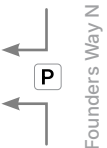
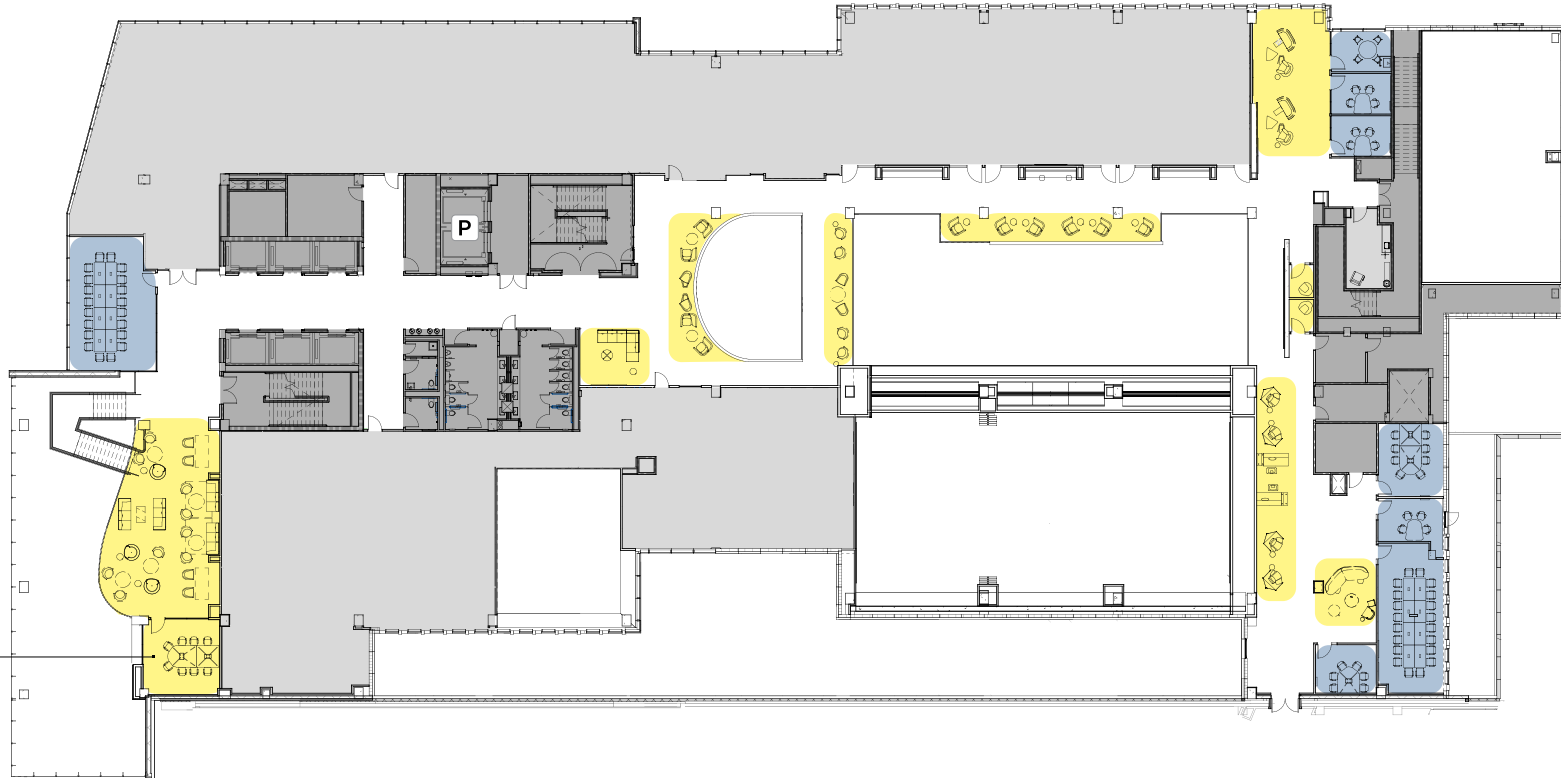
- Shared Tenant Amenity
- Restaurant Opening Soon
- Instant Booking Room 📱
- Leased
- P Parking Access

2nd Floor



Fairfax Drive

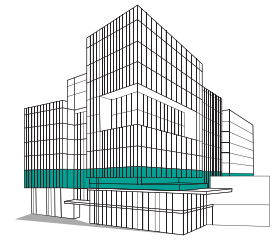
Podcast Studio



Founders Way N

- Shared Tenant Amenity
- Leased
- Instant Booking Room
- Parking Access

3rd Floor



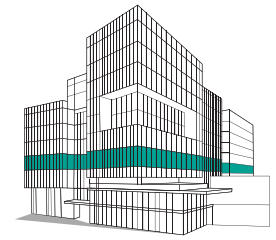
Fairfax Drive



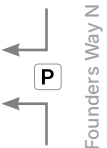
Founders Way N

- Shared Tenant Amenity
- Leased
- Instant Booking Room
- Parking Access

4th Floor



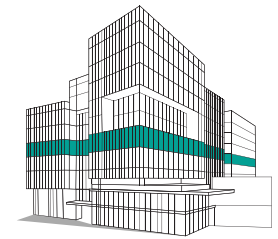
Fairfax Drive



Founders Way N

- Available Office Space
- Shared Tenant Amenity
- Leased
- Parking Access

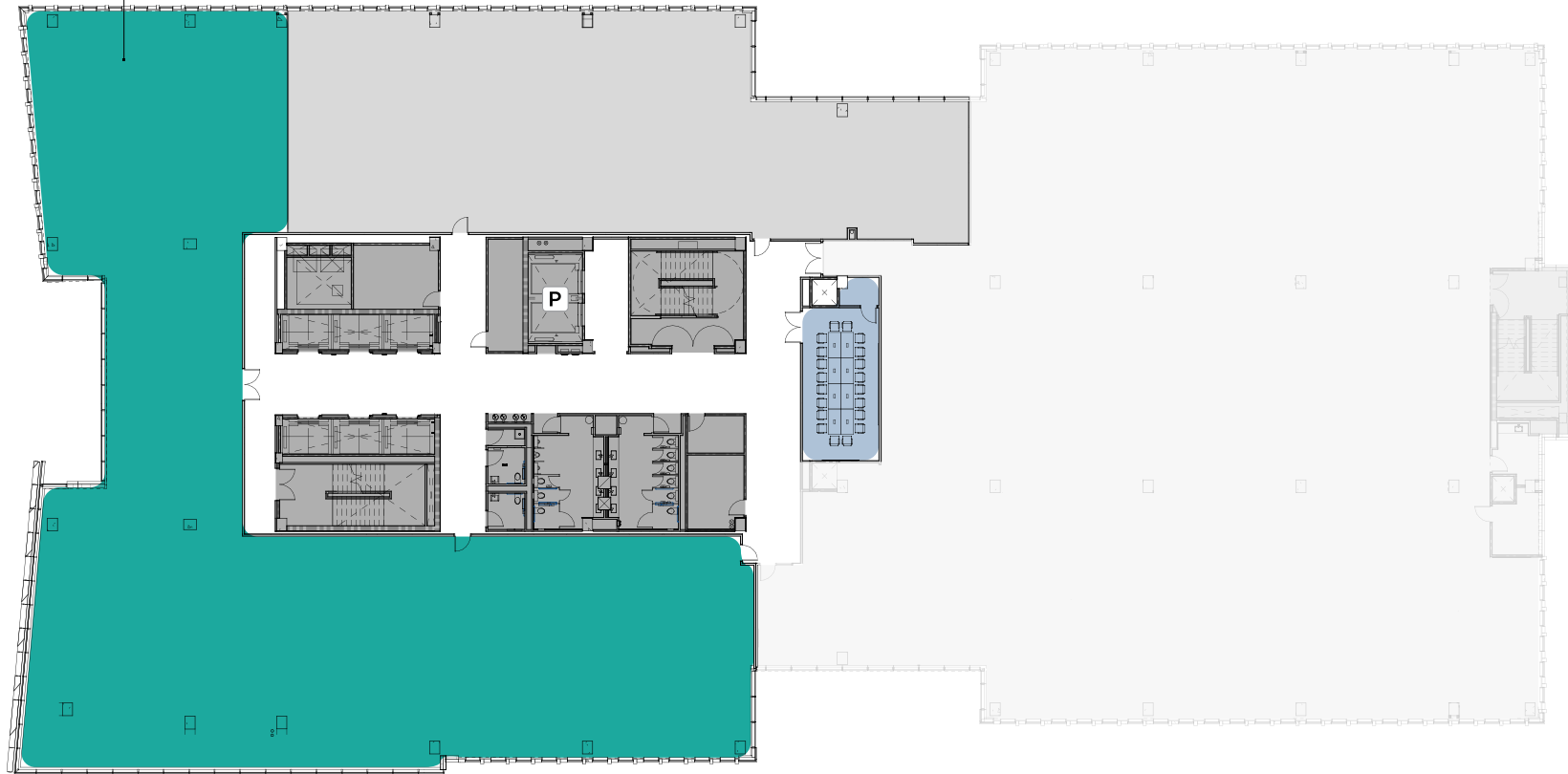
5th Floor



Suite 5210
12,663 SF
Shell Condition



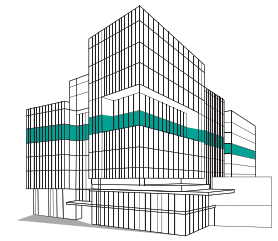
Fairfax Drive



Founders Way N

- Available Office Space
- Leased
- Instant Booking Room
- Parking Access

6th Floor



Suite 6200
10,069 SF
Shell Condition
SCIF-ready
Built to NISPOM standards



Fairfax Drive

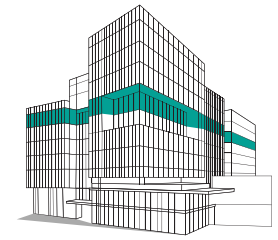
Lounge & Terrace



Founders Way N

- Available Office Space
- Shared Tenant Amenity
- Instant Booking Room
- Leased
- Parking Access

7th Floor



Suite 7200
10,111 SF
Shell Condition

Fairfax Drive

Suite 7202
3,430 SF
Shell Condition
Hypothetical Test Fit

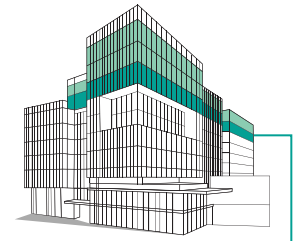


Founders Way N

- Available Office Space
- Instant Booking Room
- Shared Tenant Amenity
- Leased
- P Parking Access

8th Floor

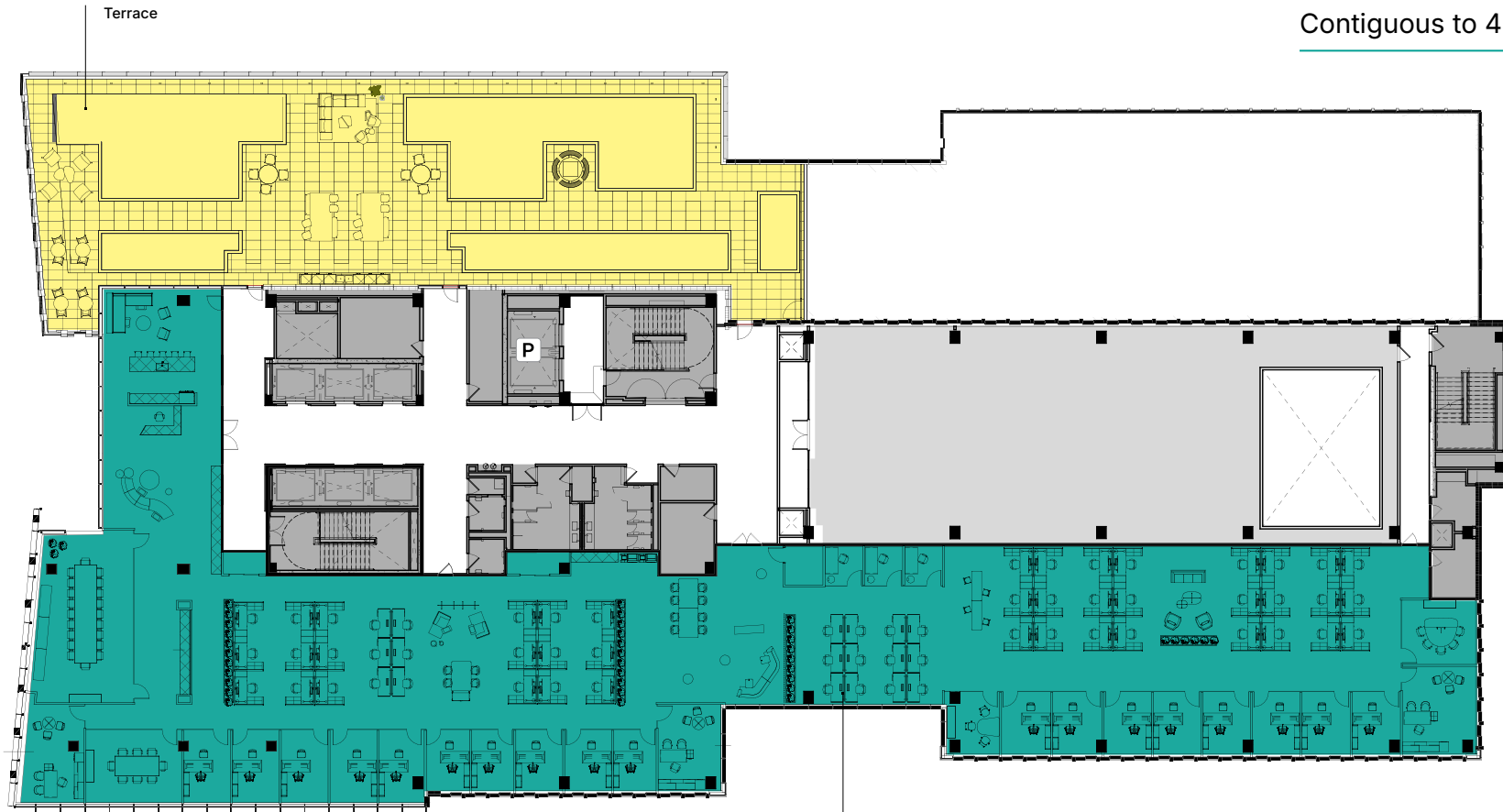
Hypothetical Test Fit



8th and 9th Floors
Contiguous to 44,560 SF



Fairfax Drive



Founders Way N

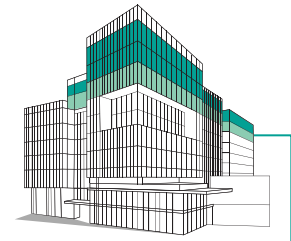
- Available Office Space
- Shared Tenant Amenity
- Leased
- Parking Access

Suite 8201
17,835 SF
Shell Condition

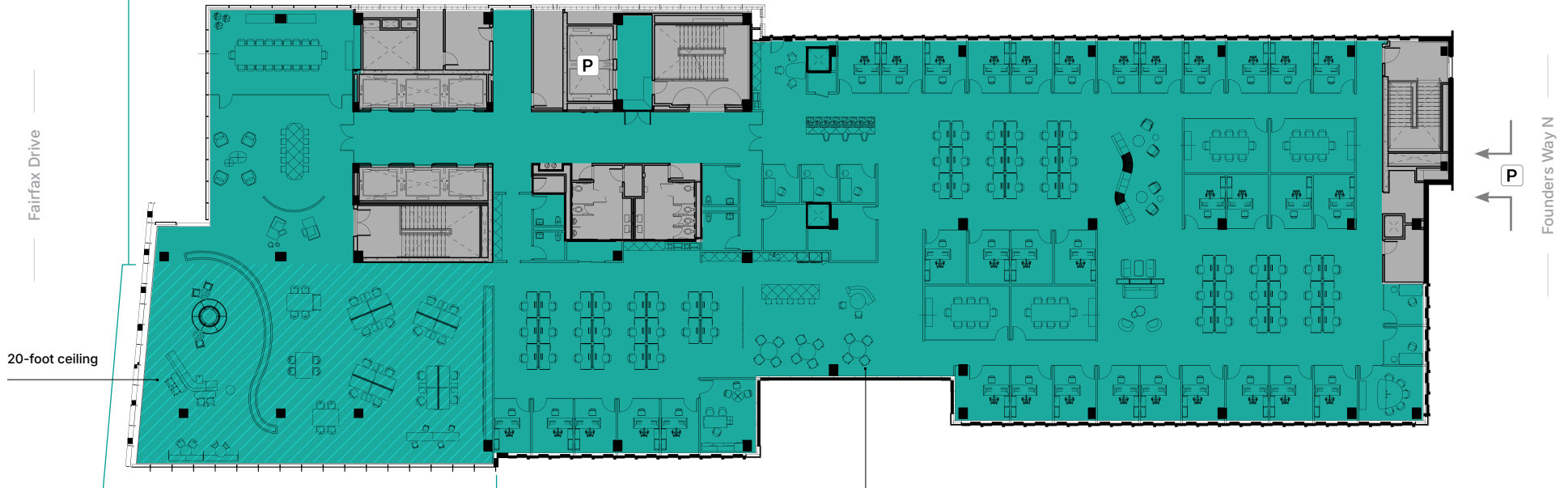
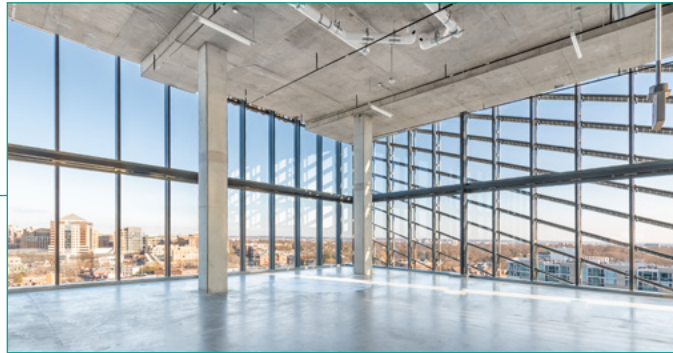
9th Floor



Hypothetical Test Fit

3D VIRTUAL TOUR



8th and 9th Floors
Contiguous to 44,560 SF



-  Available Office Space
-  Parking Access

Suite 9201
26,725 SF
Shell Condition

Leasing Information

FUSE

3401 Fairfax Drive

CBRE



John DiCamillo
+1 703 734 4723
john.dicamillo@cbre.com

Katie Fanady
+1 571 705 5522
katie.fanady@edgemoor.com

Brett Schweitzer
+1 703 905 0253
brett.schweitzer@cbre.com

Rosanne Richards
+1 703 905 0207
rosanne.richards@cbre.com



©2026 CBRE, Inc. All rights reserved. This information has been obtained from sources believed reliable, but has not been verified for accuracy or completeness. You should conduct a careful, independent investigation of the property and verify all information. Any reliance on this information is solely at your own risk. Photos herein are the property of their respective owners. Use of these images without the express written consent of the owner is prohibited. CBRE and the CBRE logo are service marks of CBRE, Inc. All other marks displayed on this document are the property of their respective owners.