

FOR SALE OR LEASE

2-STORY OFFICE BUILDING

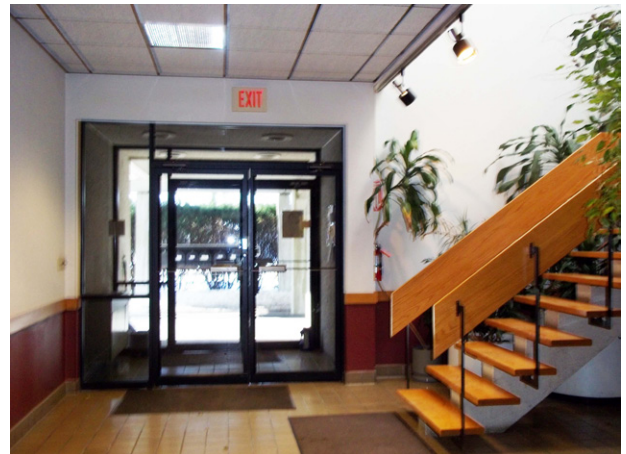
159 DWIGHT PARK CIRCLE

SYRACUSE, NY 13209



PROPERTY SUMMARY

- + 22,280 sq. ft., 2-story office building
- + 1st floor availability:
 - 1,200 sq. ft. & 1,000 sq. ft. contiguous suites
 - 1,200 sq. ft. suite
- + Elevator
- + 72+ parking
- + Solvay Electric
- + Intersection of I-690 West and NYS Thruway (I-90) Exit 39



CONTACT EXCLUSIVE AGENT

DONALD R. FRENCH

Senior Broker

+1 315 422 4200

donald.french@cbre-syr.com

CBRE | SYRACUSE

Nettleton Commons

313 E. Willow St., Ste. 202

Syracuse, NY 13203

© 2017 CB Richard Ellis/Syracuse, N.Y., LLC. This information has been obtained from sources believed reliable. We have not verified it and make no guarantee, warranty or representation about it. Any projections, opinions, assumptions or estimates used are for example only and do not represent the current or future performance of the property. You and your advisors should conduct a careful, independent investigation of the property to determine to your satisfaction the suitability of the property for your needs. Photos herein are the property of their respective owners and use of these images without the express written consent of the owner is prohibited.

www.cbre.com/syracuse

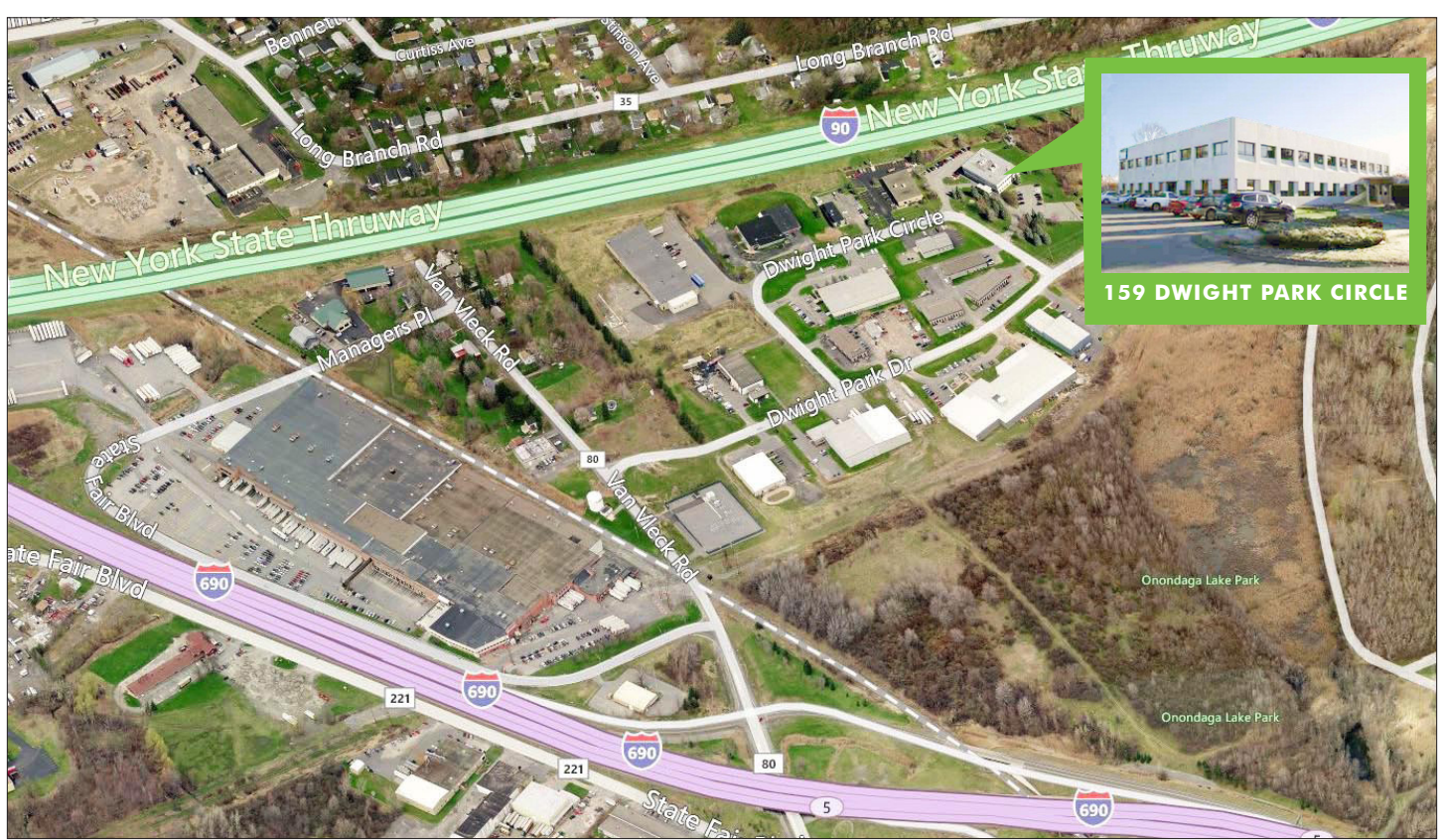
CBRE | Syracuse

Part of the CBRE affiliate network

FOR SALE OR LEASE 2-STORY OFFICE BUILDING

159 DWIGHT PARK CIRCLE
Syracuse, NY 13209

PROPERTY AERIALS

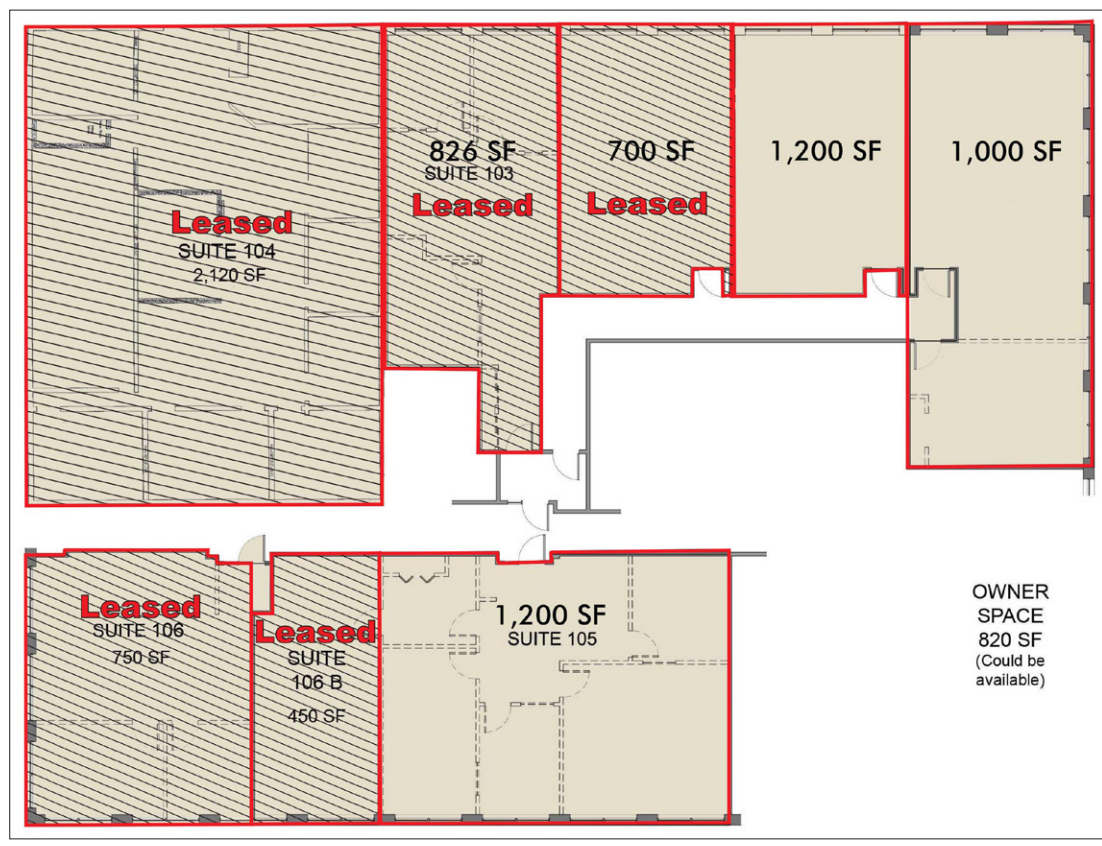



FOR SALE OR LEASE 2-STORY OFFICE BUILDING

159 DWIGHT PARK CIRCLE
Syracuse, NY 13209

FLOOR PLANS


1ST
FLOOR




2ND
FLOOR

