



ONE SANSOME
SAN FRANCISCO

NEWMARK

MIKE BROWN
VICE CHAIRMAN
t 415.274.4423
mike.brown@nmrk.com
CA RE LIC #01200178

ROMAN ADLER
EXEC MANAGING DIRECTOR
t 415.274.4434
roman.adler@nmrk.com
CA RE LIC #01520766

AARON GILLESPIE
SR MANAGING DIRECTOR
t 415.445.5153
aaron.gillespie@nmrk.com
CA RE LIC #01971974

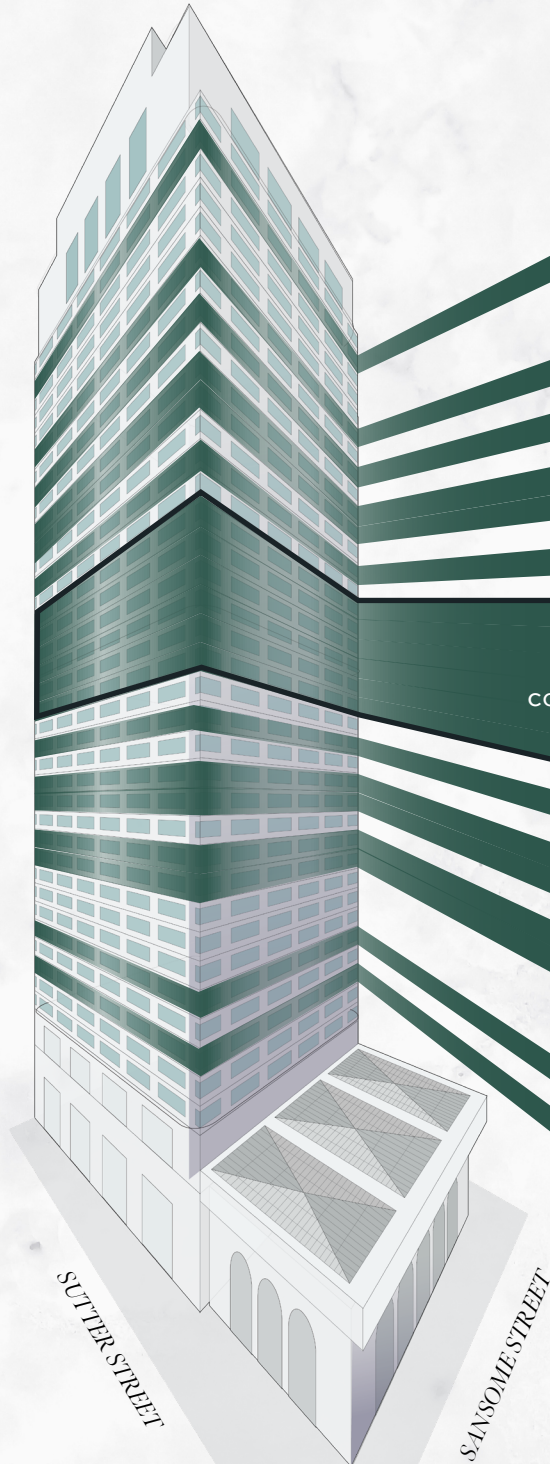
BUILDING HIGHLIGHTS

- 42-story, ±623,800 RSF, premier office tower located in the heart of the Financial District
- Fantastic Golden Gate Bridge to Bay Bridge views from upper floors
- Completely re-imagined ground plane with the restored Conservatory, new bar + restaurant with indoor/outdoor seating, & tenant amenity center including a conference facility
- 12'6" slab to slab heights
- 17,000 SF floorplates
- Floorplates accommodate office intensive and open plan users
- Direct access to Montgomery Street BART/MUNI station via secure tunnel
- Bicycle storage, showers and lockers on site
- Stable and committed hands-on ownership
- All office space equipped with state of the art fiber optic cabling





STACKING PLAN



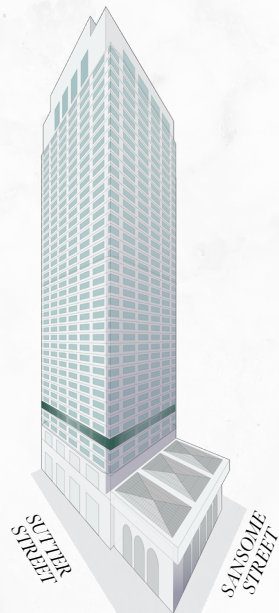
FL	SQ FT	ELEVATOR BANKS	FL
42			42
41			41
40	STE 4050: 11,451		40
39			39
38			38
37			37
36	STE 3670: 3,490		36
35			35
34	STE 3450: 3,083		34
33			33
32	STE 3210: 6,645		32
31	STE 3110: 3,950 3150: 4,201		31
30			30
29	STE 2900: 5,126 2940: 4,845		29
28			28
27	STE 2700: 17,384		27
26	STE 2600: 17,384		26
25	STE 2500: 17,414		25
24	STE 2400: 17,559		24
23	STE 2300: 17,559		23
22	STE 2200: 17,471		22
21			21
20	STE 2060: 1,945		20
19			19
18	STE 1800: 5,701 1810: 3,009 1895: 2,607		18
17	STE 1700: 16,811		17
16			16
15	STE 1500: 9,706		15
14	STE 1400: 16,380		14
12			12
11			11
10			10
9	STE 900: 9,978		9
8			8
7	STE 700: 3,724 725: 2,265		7
6			6
3			3
GRD			GRD

Click suite to view floor plan

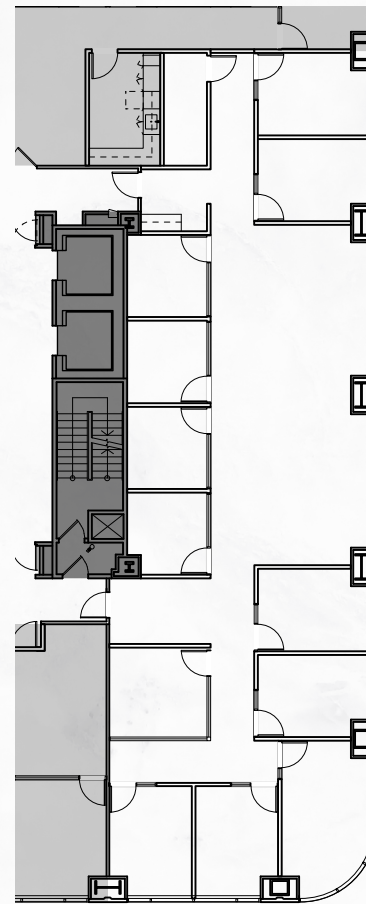
SUITE 700

FLOOR 7
3,724 RSF
AVAILABLE NOW

- 6 Perimeter offices
- 1 Medium conference room
- 1 Small conference room
- Open area for workstations
- Kitchenette
- Copy/Print area
- IDF closet

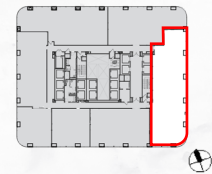


[*Click above to return to stacking plan*](#)



SUTTER

SANSOME

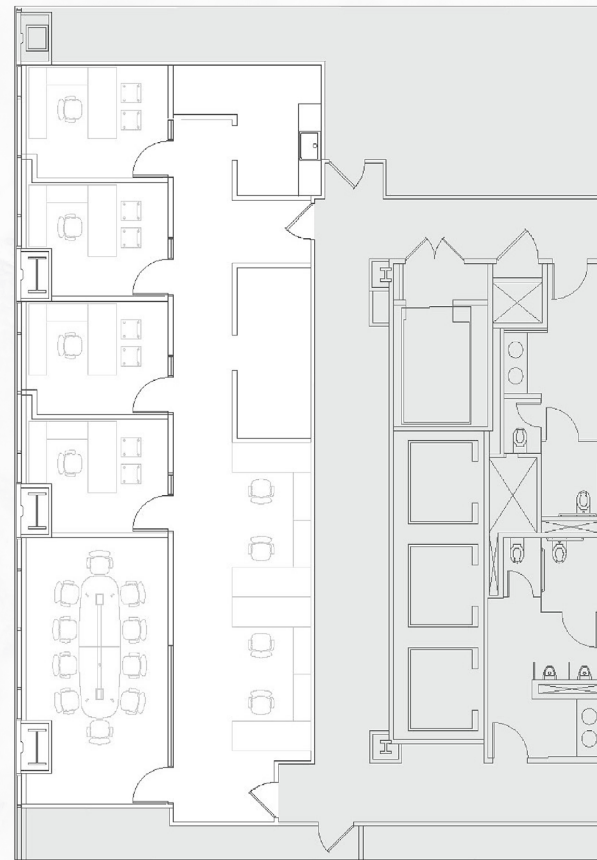
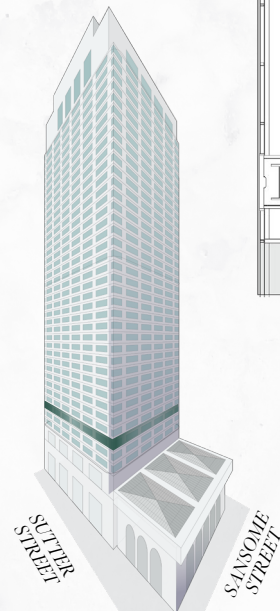




SUITE 725

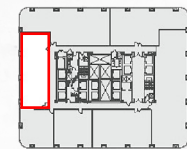
FLOOR 7
2,265 RSF
AVAILABLE NOW

- 4 Private offices
- 1 Conference room
- Kitchen
- Storage space
- Open area



SANSOME

SUTTER



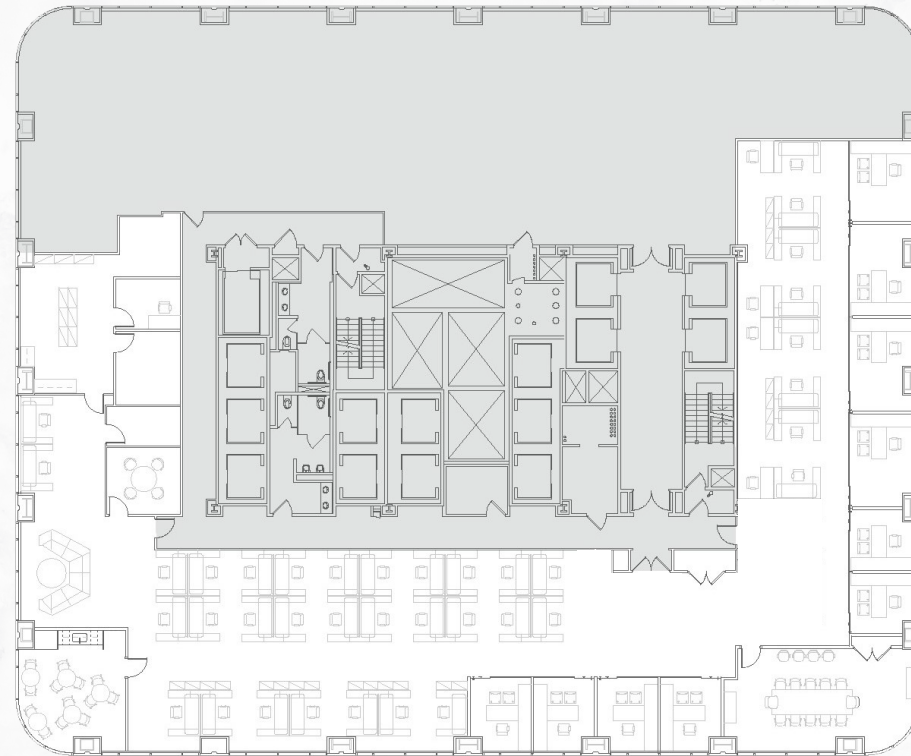
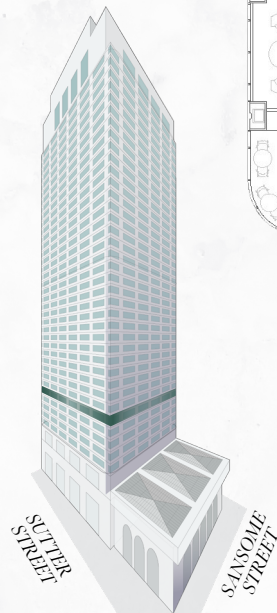
Click above to return to stacking plan



SUITE 900

FLOOR 9
9,978 RSF
AVAILABLE NOW

- Move-in ready suite
- Double-door elevator identity
- 10 Private offices/
Meeting rooms
- 2 Conference rooms
- 3 Phone rooms
- Kitchen
- Server room
- Copy/Production room
- Open area for ± 40
workstations



SANSOME

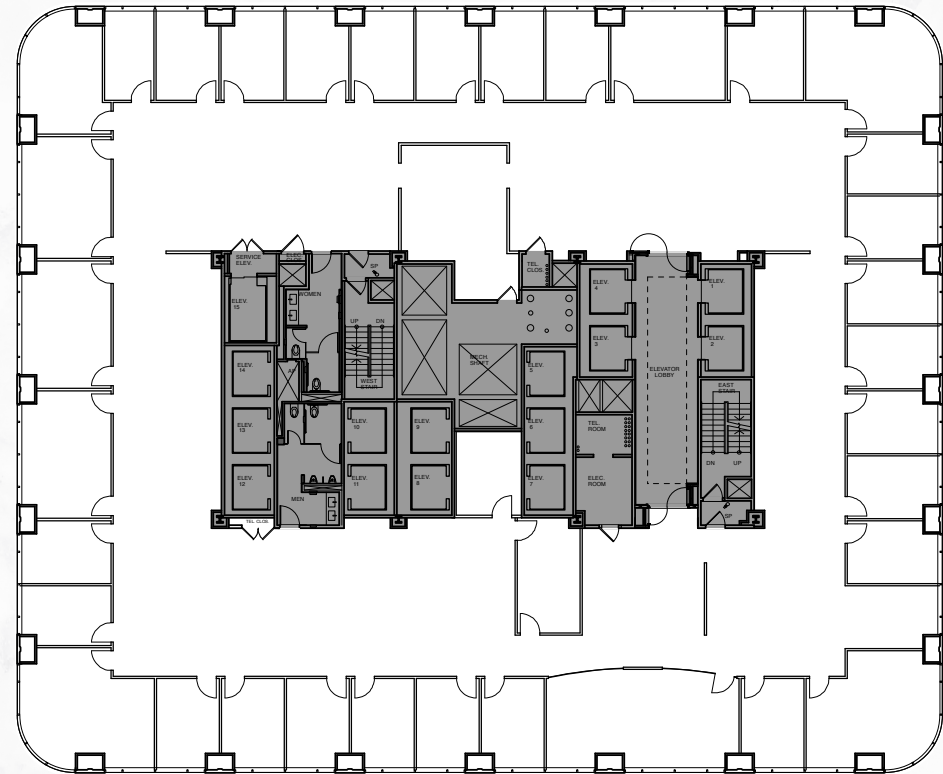
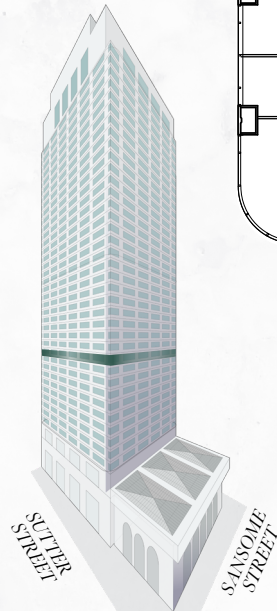
SUTTER

Click above to return to stacking plan

SUITE 1400

FLOOR 14
16,380 RSF
AVAILABLE
MAY 2024

- Full floor, private office intensive space
- Formal reception
- 1 Large boardroom
- 8 Large offices/Meeting rooms
- 24 Window-line private offices
- Kitchenette/Break room



SUTTER

SANSOME

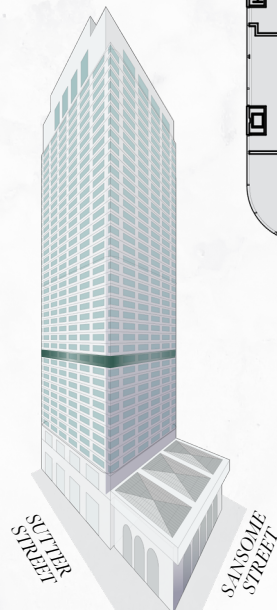
[*Click above to return to stacking plan*](#)



SUITE 1500

FLOOR 15
9,706 RSF
AVAILABLE NOW

- Good light & city views
- 2 Conference rooms
- 5 Offices/Meeting rooms
- Large kitchen/All-hands
- Large open area
- Double-door elevator identity



SUTTER

SANSOME

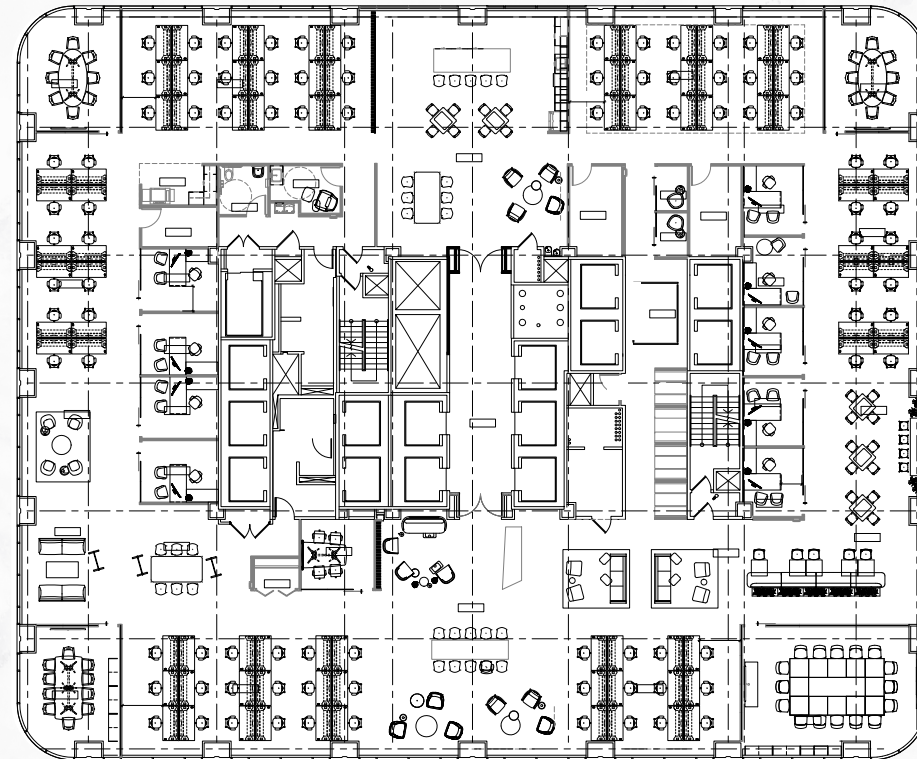
Click above to return to stacking plan



SUITE 1700

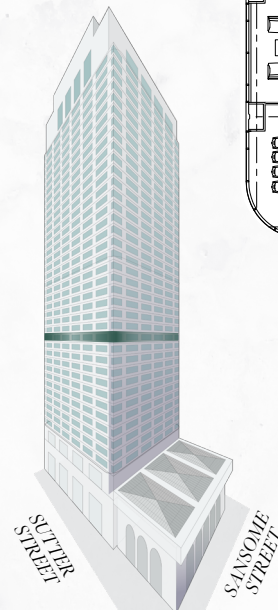
FLOOR 17
16,811 RSF
AVAILABLE NOW

- Recently completed spec suite
- Good city views
- 4 Conference rooms
- 10 Offices/Meeting rooms
- 2 Phone rooms
- Open area for ±115 workstations
- Multiple collab areas
- Large kitchen/All-hands
- Men's, women's, & all-gender restroom



SANSOME

SUTTER



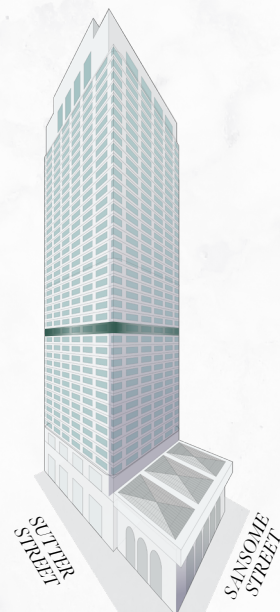
Click above to return to stacking plan



SUITE 1800

FLOOR 18
5,701 RSF
AVAILABLE NOW

- 4 Conference rooms
- 9 Private offices
- Break room
- Storage space
- Double-door elevator identity
- Reception

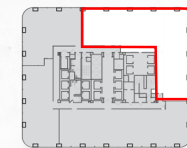


Click above to return to stacking plan



SUTTER

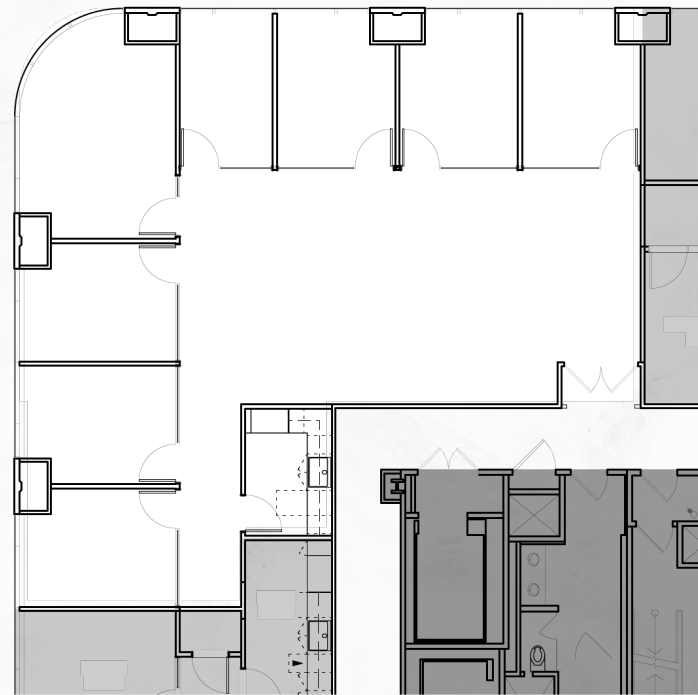
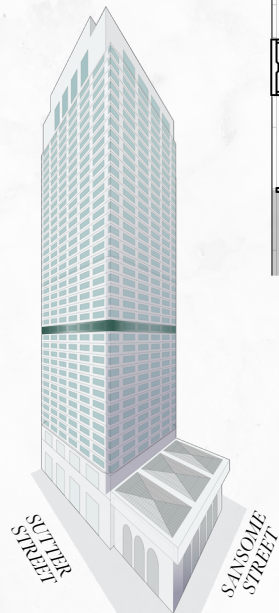
SANSOME



SUITE 1810

FLOOR 18
3,009 RSF
AVAILABLE NOW

- 1 Conference room
- 7 Private offices
- Open area for workstations
- Break room



SANSOME



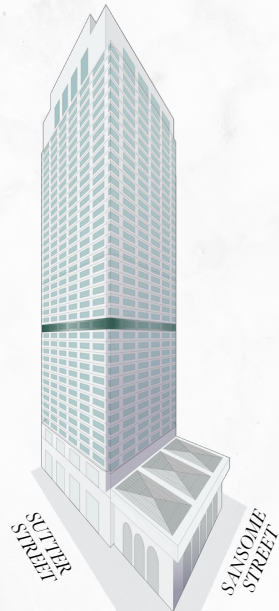
SUTTER

Click above to return to stacking plan

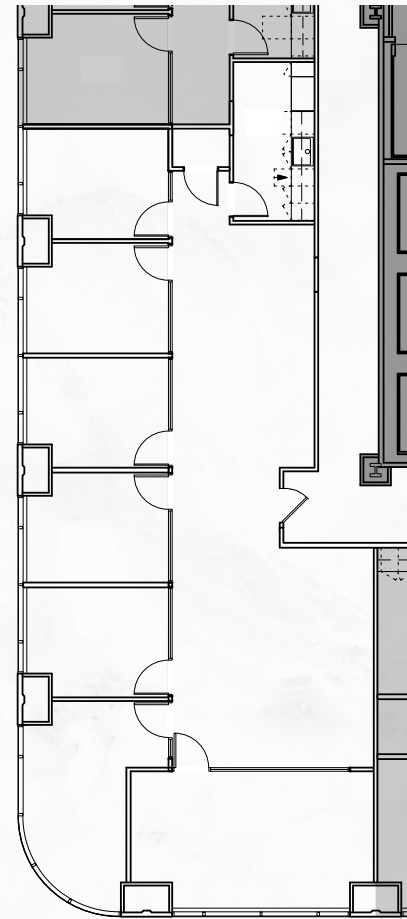
SUITE 1895

FLOOR 18
2,607 RSF
AVAILABLE NOW

- 6 Perimeter offices
- 1 Conference room
- Kitchenette/Break room

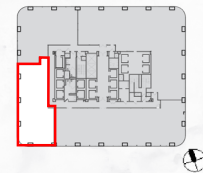


[*Click above to return to stacking plan*](#)



SUTTER

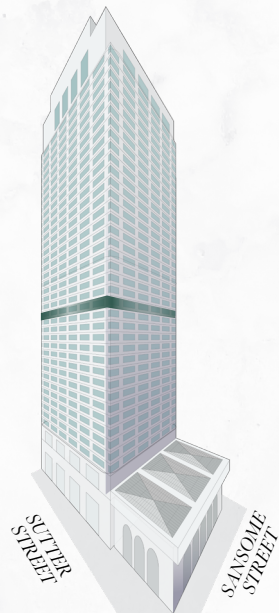
SANSOME



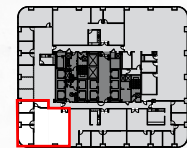
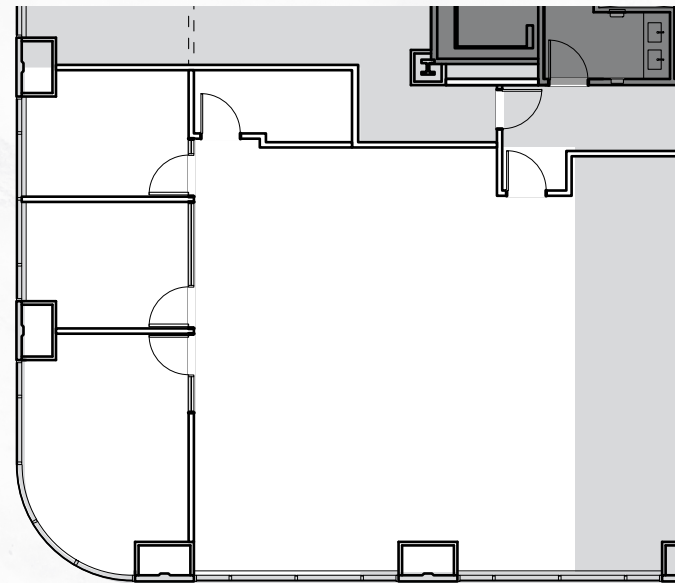
SUITE 2060

FLOOR 20
1,945 RSF
AVAILABLE NOW

- 3 Private offices/
Meeting rooms
- Open area for
workstations
- Storage



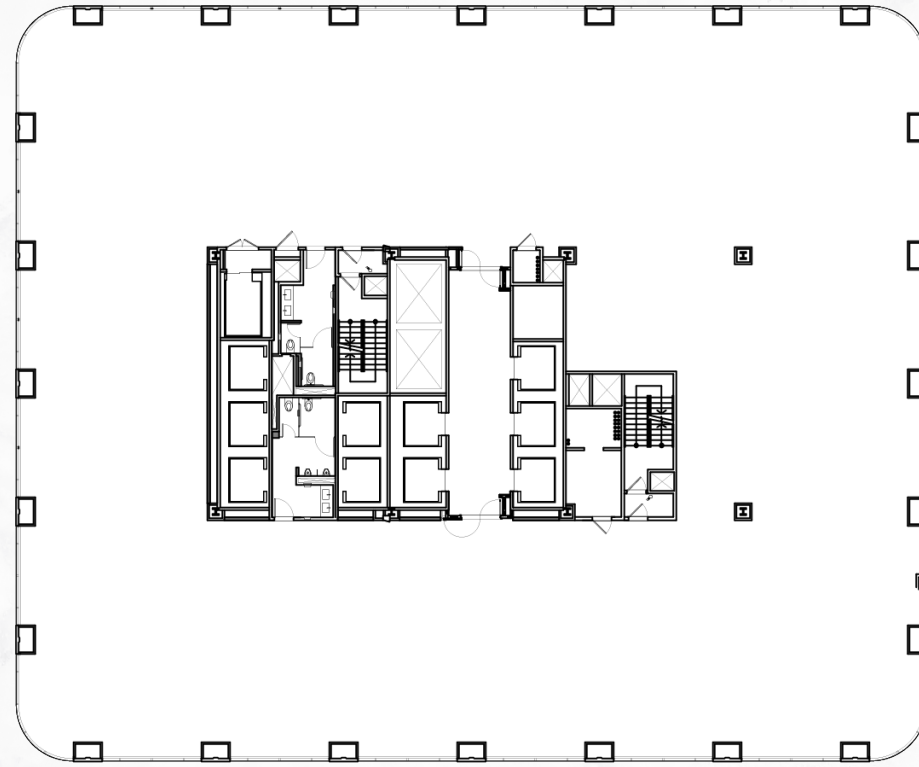
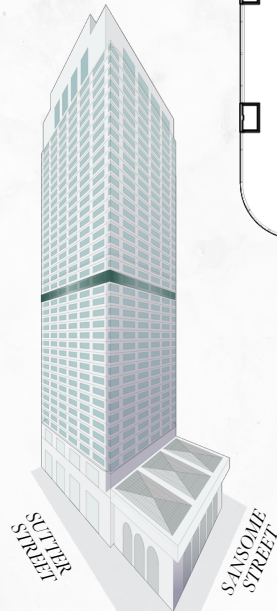
[*Click above to return to stacking plan*](#)



SUITE 2200

FLOOR 22
17,471 RSF
AVAILABLE NOW

- Second generation professional services space
- 104,000 SF contiguous block



SANSOME

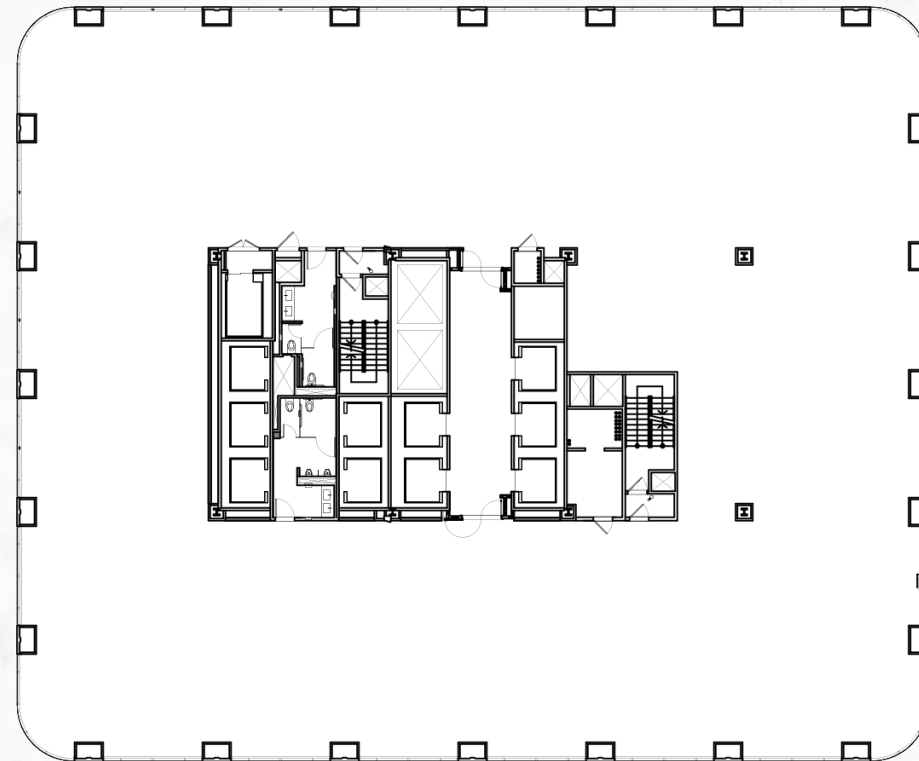
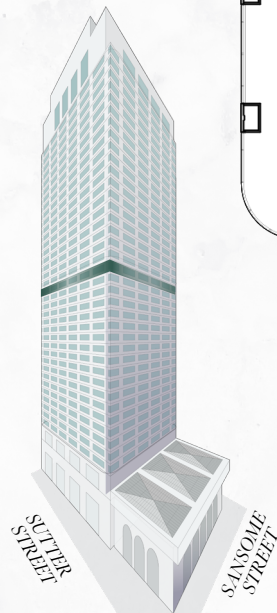
SUTTER

Click above to return to stacking plan

SUITE 2300

FLOOR 23
17,559 RSF
AVAILABLE NOW

- Second generation professional services space
- 104,000 SF contiguous block



SUTTER

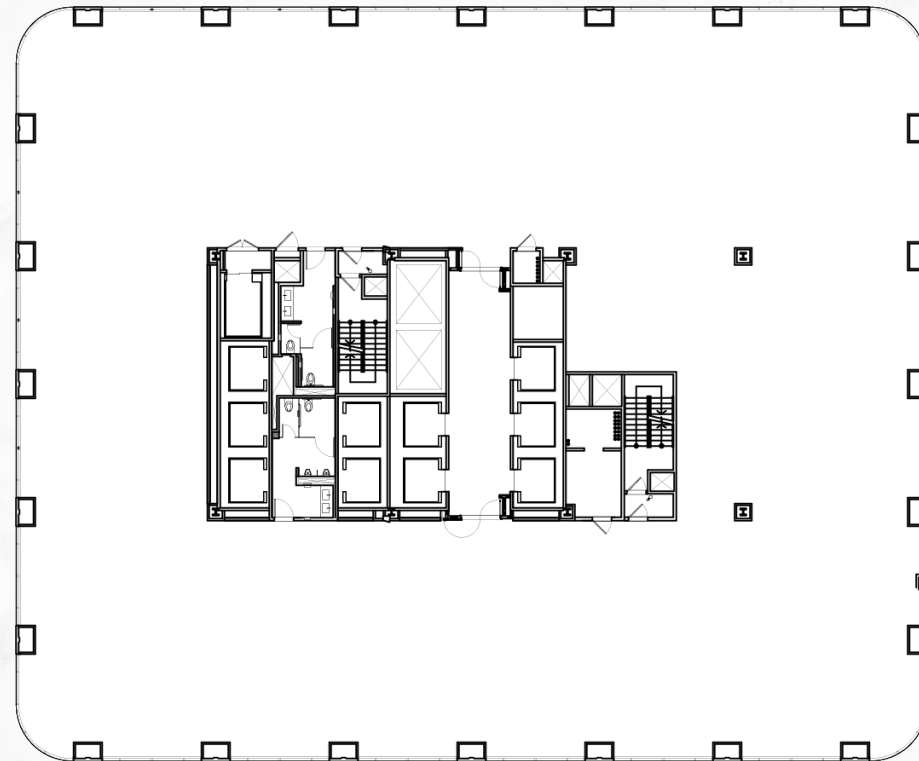
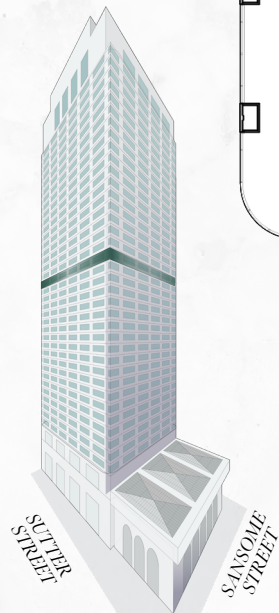
SANSOME

Click above to return to stacking plan

SUITE 2400

FLOOR 24
17,559 RSF
AVAILABLE NOW

- Second generation professional services space
- 104,000 SF contiguous block



SUTTER

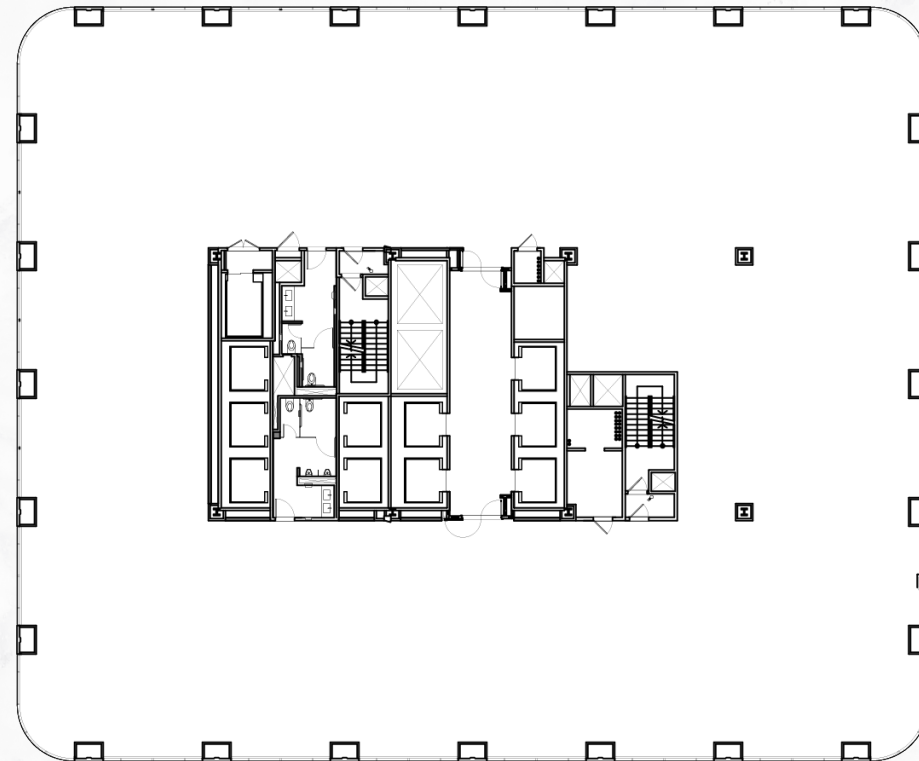
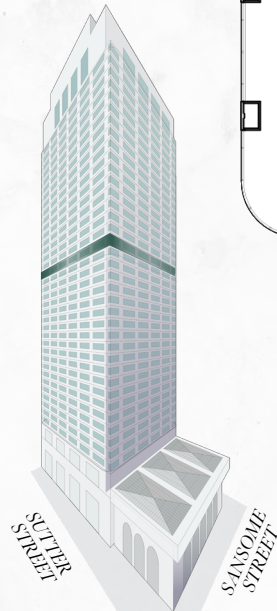
SANSOME

Click above to return to stacking plan

SUITE 2500

FLOOR 25
17,414 RSF
AVAILABLE NOW

- Second generation professional services space
- 104,000 SF contiguous block



SANSOME

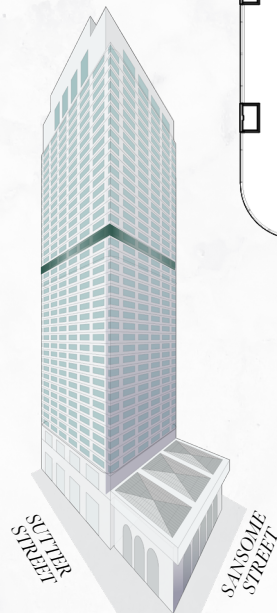
SUTTER

Click above to return to stacking plan

SUITE 2600

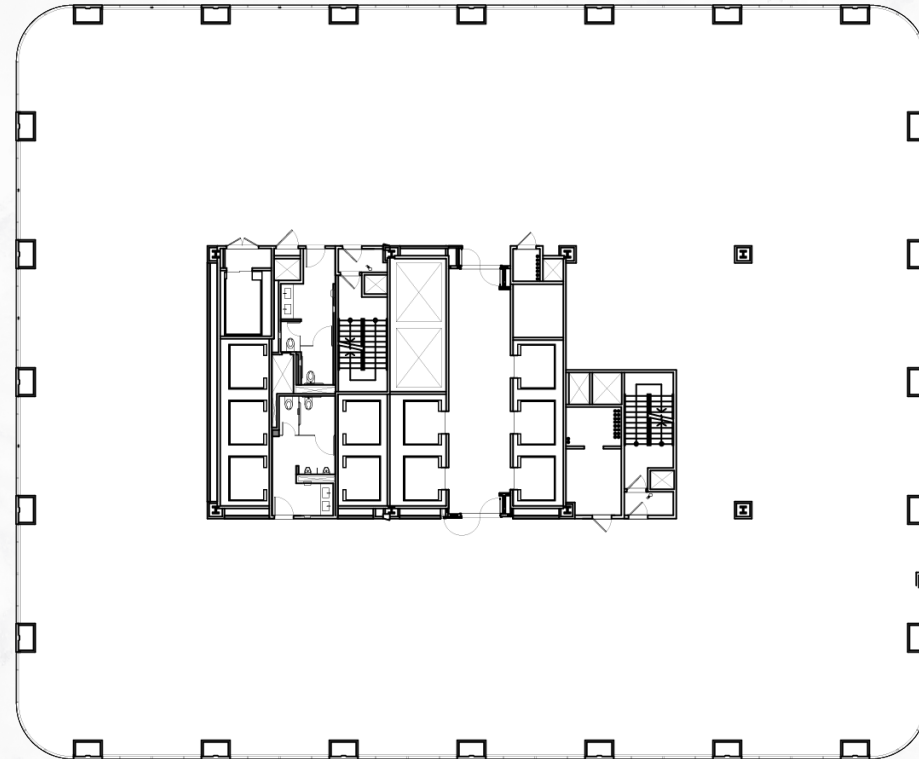
FLOOR 26
17,384 RSF
AVAILABLE NOW

- Second generation professional services space
- 104,000 SF contiguous block



SUTTER
STREET

SANSOME
STREET



SANSOME

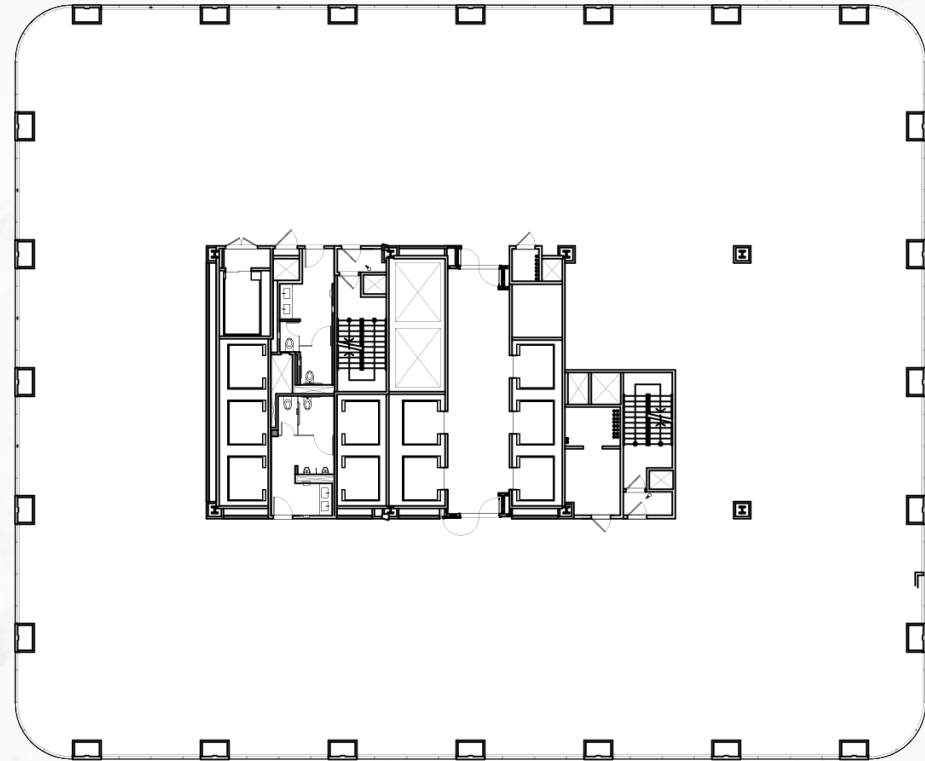
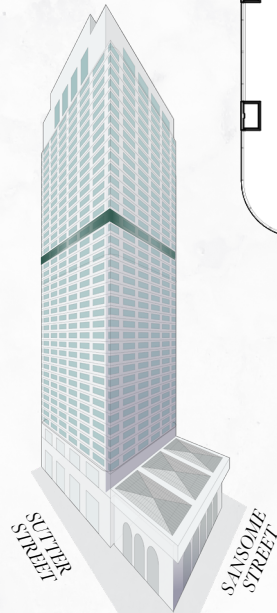
SUTTER

Click above to return to stacking plan

SUITE 2700

FLOOR 27
17,384 RSF
AVAILABLE NOW

- Second generation professional services space
- 104,000 SF contiguous block



SANSOME

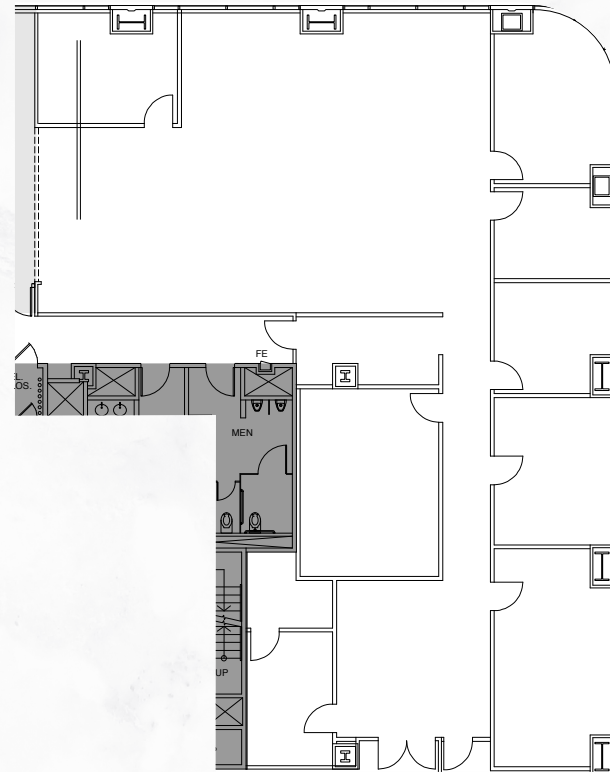
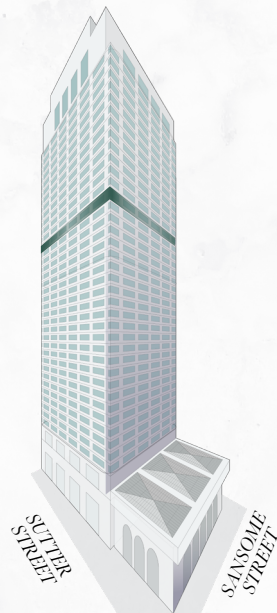
SUTTER

Click above to return to stacking plan

SUITE 2900

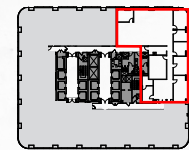
FLOOR 29
5,126 RSF
AVAILABLE NOW

- Northern bay and city views
- Professional services suite
- Reception
- 1 Large conference room
- 5 Private offices / Meeting rooms
- Storage/IT Closet
- Large break rooms
- Open area for workstations



SUTTER

SANSOME

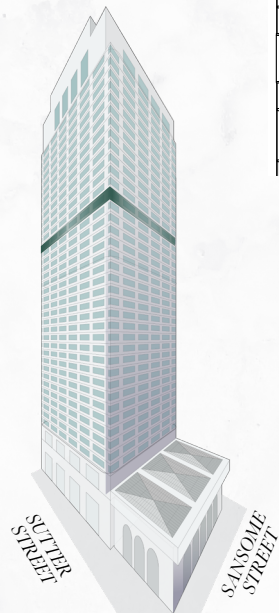


Click above to return to stacking plan

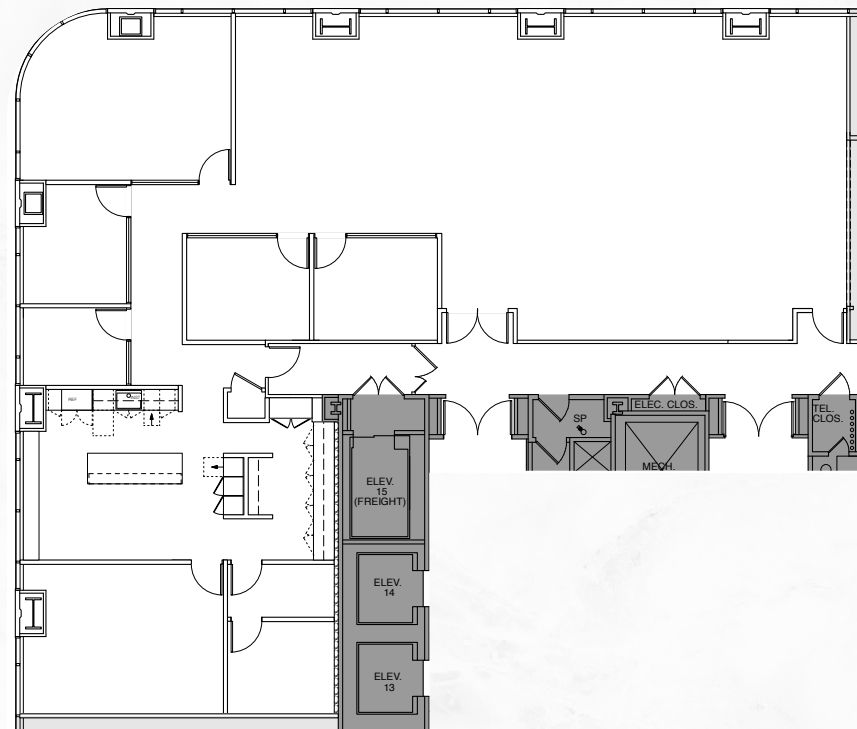
SUITE 2940

FLOOR 29
4,845 RSF
AVAILABLE NOW

- North Bay Views
- 2 Conference rooms
- 3 Private offices/
Meeting rooms
- 1 Small conference room
- Storage/IT Closet
- Large break room
- Open area for
workstations



[*Click above to return to stacking plan*](#)



SUTTER

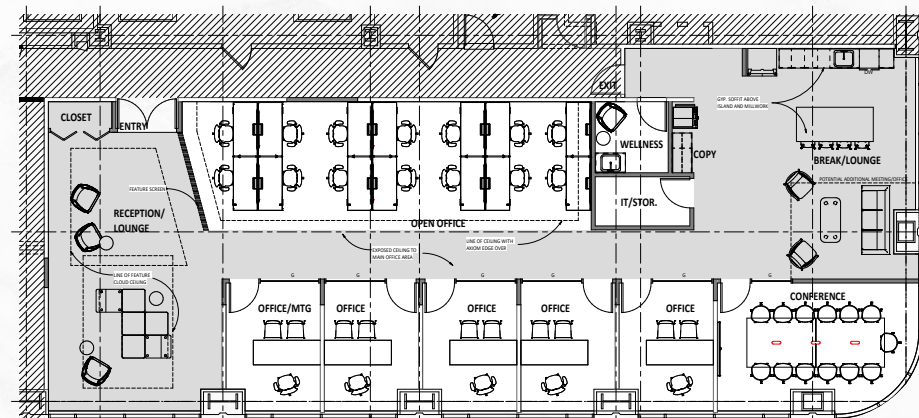
SANSOME



SUITE 3110

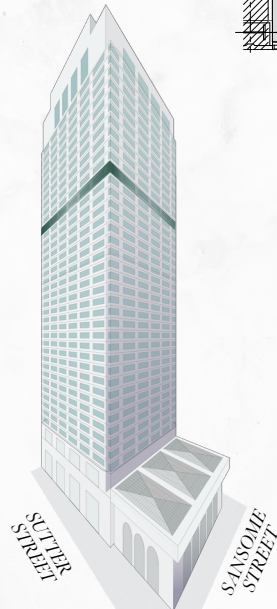
FLOOR 31
3,950 RSF
AVAILABLE NOW

- City and bay views
- Spec suite under construction
- Double door entry with reception
- Partially exposed ceiling and creative elements
- 1 large conference room
- 5 window line private offices
- Wellness room
- Large, collaborative break and lounge area



SANSOME

SUTTER

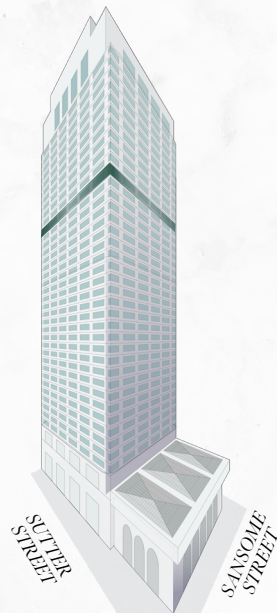


Click above to return to stacking plan

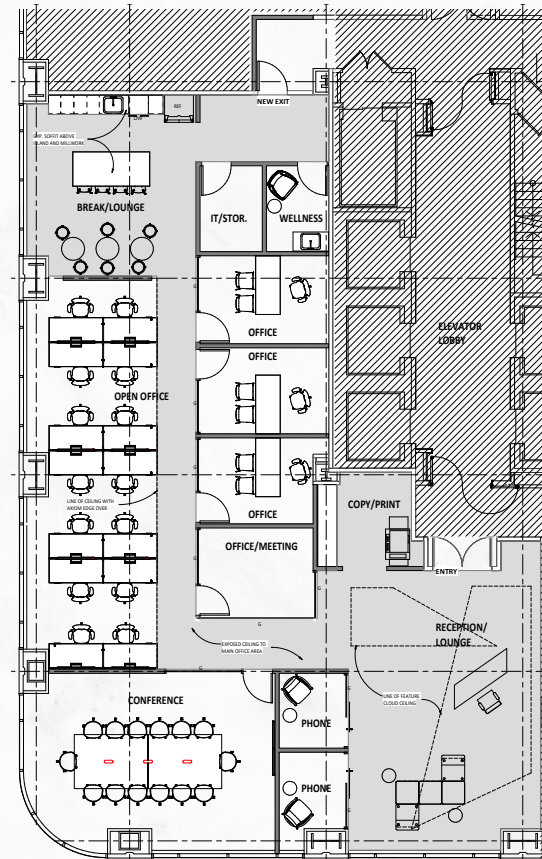
SUITE 3150

FLOOR 31
4,201 RSF
AVAILABLE NOW

- Western views
- Spec suite under construction
- Double door entry off of elevator with reception
- Partially exposed ceiling and creative elements
- 1 large conference room
- 4 private offices / meeting rooms
- 2 phone rooms
- Wellness room
- Large, collaborative break and lounge area



Click above to return to stacking plan



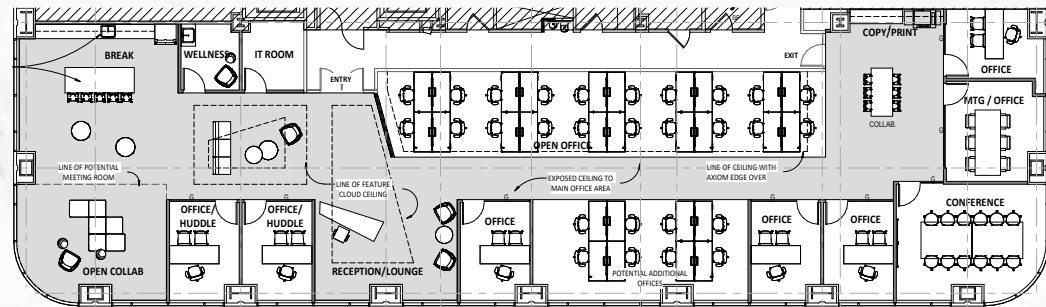
SANSOME

SUTTER

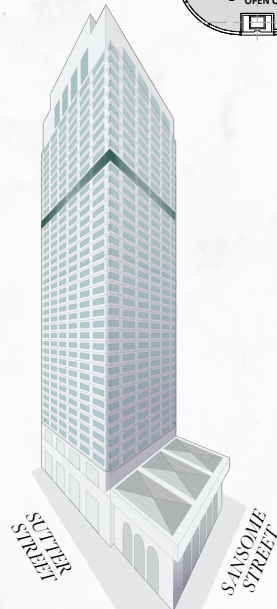
SUITE 3210

FLOOR 32
6,645 RSF
AVAILABLE NOW

- City and bay views
- Spec suite under construction
- Double door entry off of elevator with reception
- Partially exposed ceiling and creative elements
- 1 large conference room
- 1 medium conference room
- 6 window line private offices
- Wellness room
- Large, collaborative break area



SUTTER

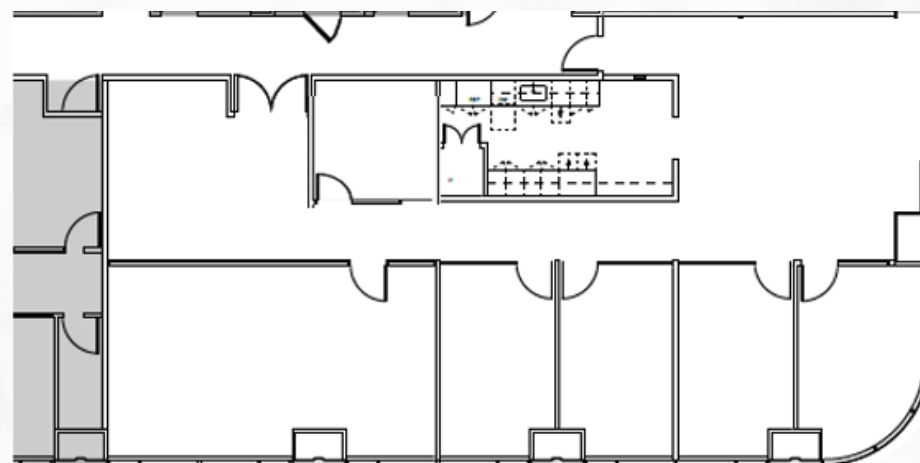
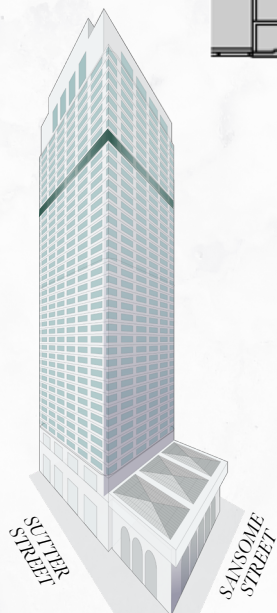


Click above to return to stacking plan

SUITE 3450

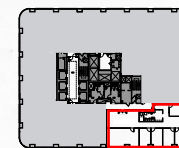
FLOOR 34
3,083 RSF
AVAILABLE NOW

- City and bay views
- 1 Large conference room
- 1 Huddle Room
- 4 Window line private offices
- Kitchenette



SANSOME

SUTTER

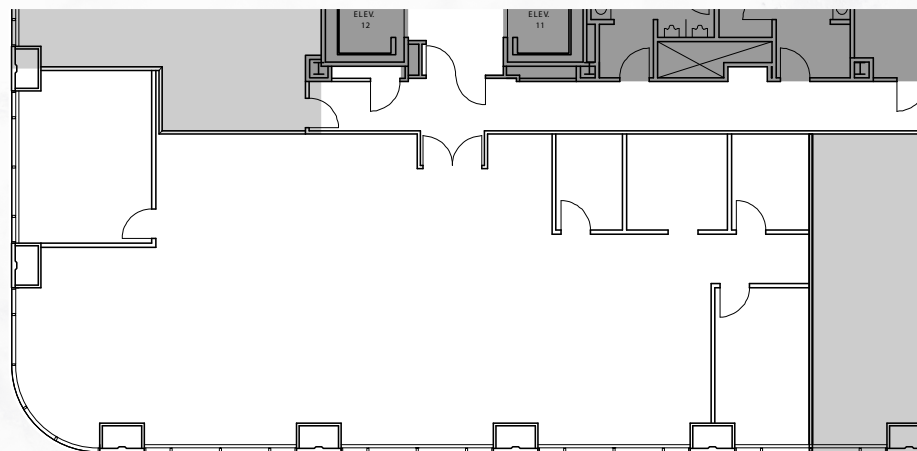
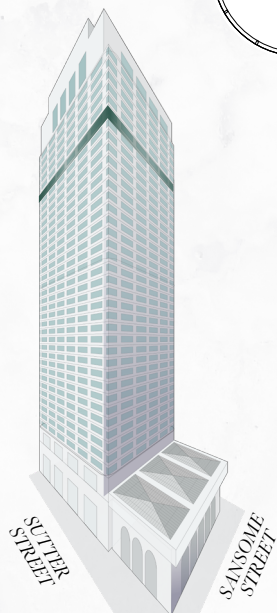


Click above to return to stacking plan

SUITE 3670

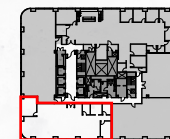
FLOOR 36
3,490 RSF
AVAILABLE NOW

- 1 Large conference room
- 1 Medium conference room
- Storage/IT closet
- Open area for work stations
- Kitchenette
- City and Bay Views



SUTTER

SANSOME



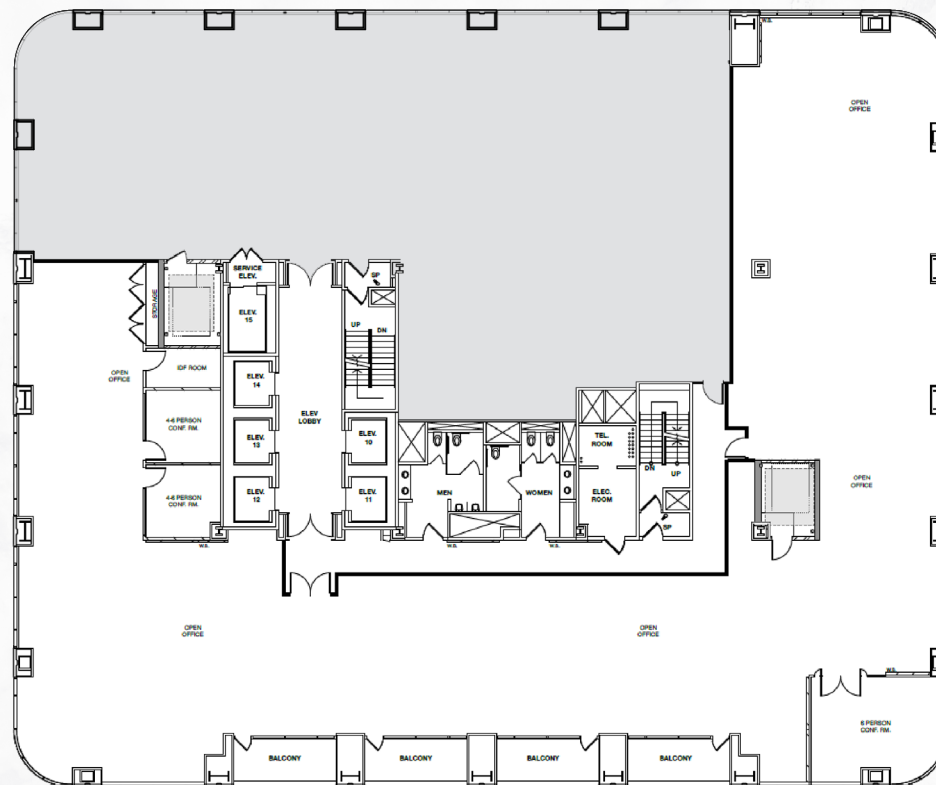
Click above to return to stacking plan



SUITE 4050

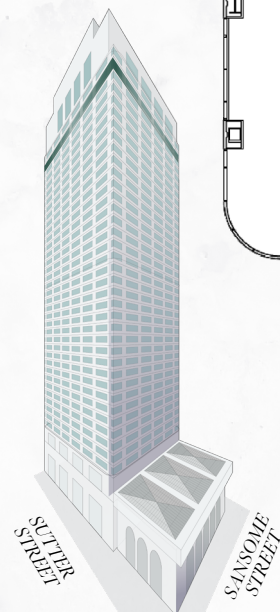
FLOOR 40
11,451 RSF
AVAILABLE NOW

- Premier bay & city views
- High-end creative finishes
- Primarily open plan
- 3 Existing meeting rooms



SANSOME

SUTTER



Click above to return to stacking plan



ONE SANSOME
SAN FRANCISCO

BARKER
PACIFIC
GROUP

Barker Pacific Group, Inc. (BPG) is a firm of experienced real estate professionals active in the acquisition, development, construction management and asset management of major commercial projects. Founded in 1983, the company specializes in the development and acquisition of institutional-quality office, industrial and residential projects in select U.S. cities. As a developer, BPG has completed, developed or redeveloped in excess of \$3.5 billion in commercial projects. The company enjoys close relationships with major corporate and institutional partners who commend the Barker Pacific Group management team's commitment to excellence, entrepreneurial vision, business acumen and personal integrity.



PGIM Real Estate has consistently been the largest manager of worldwide institutional assets according to Pensions & Investments, an industry publication.

MIKE BROWN
VICE CHAIRMAN
t 415.274.4423
mike.brown@nrmk.com
CA RE LIC #01200178

ROMAN ADLER
EXEC MANAGING DIRECTOR
t 415.274.4434
roman.adler@nrmk.com
CA RE LIC #01520766

AARON GILLESPIE
SR MANAGING DIRECTOR
t 415.445.5153
aaron.gillespie@nrmk.com
CA RE LIC #01971974

ONE SANSOME STREET, FLOOR 41, SAN FRANCISCO, CA 94104

The distributor of this communication is performing acts for which a real estate license is required. The information contained herein has been obtained from sources deemed reliable but has not been verified and no guarantee, warranty or representation, either express or implied, is made with respect to such information. Terms of sale or lease and availability are subject to change or withdrawal without notice.