

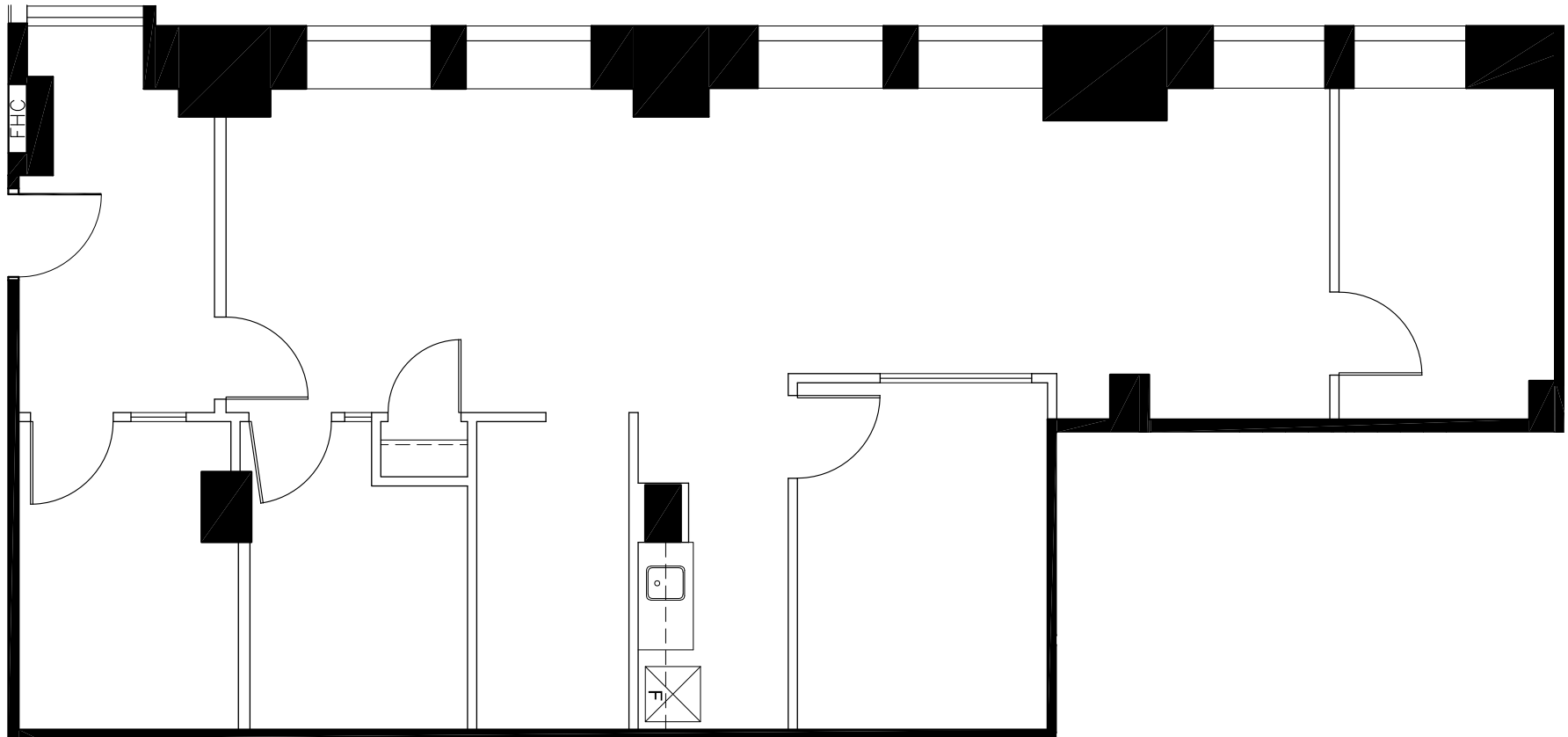
FLOOR PLANS

36 Toronto St.

dream  + **CBRE**

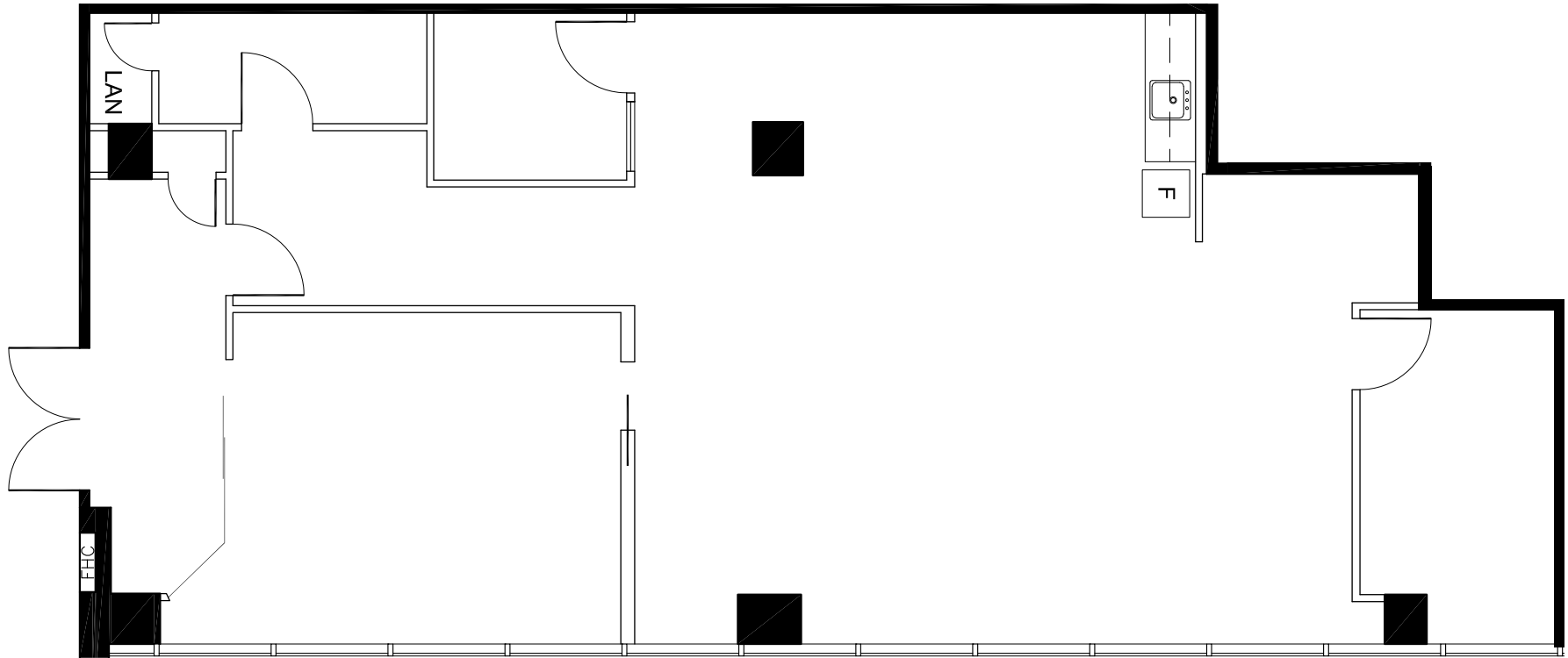
Suite 502 – 1,437 SF

Suite built-out with offices, meeting room and kitchenette.



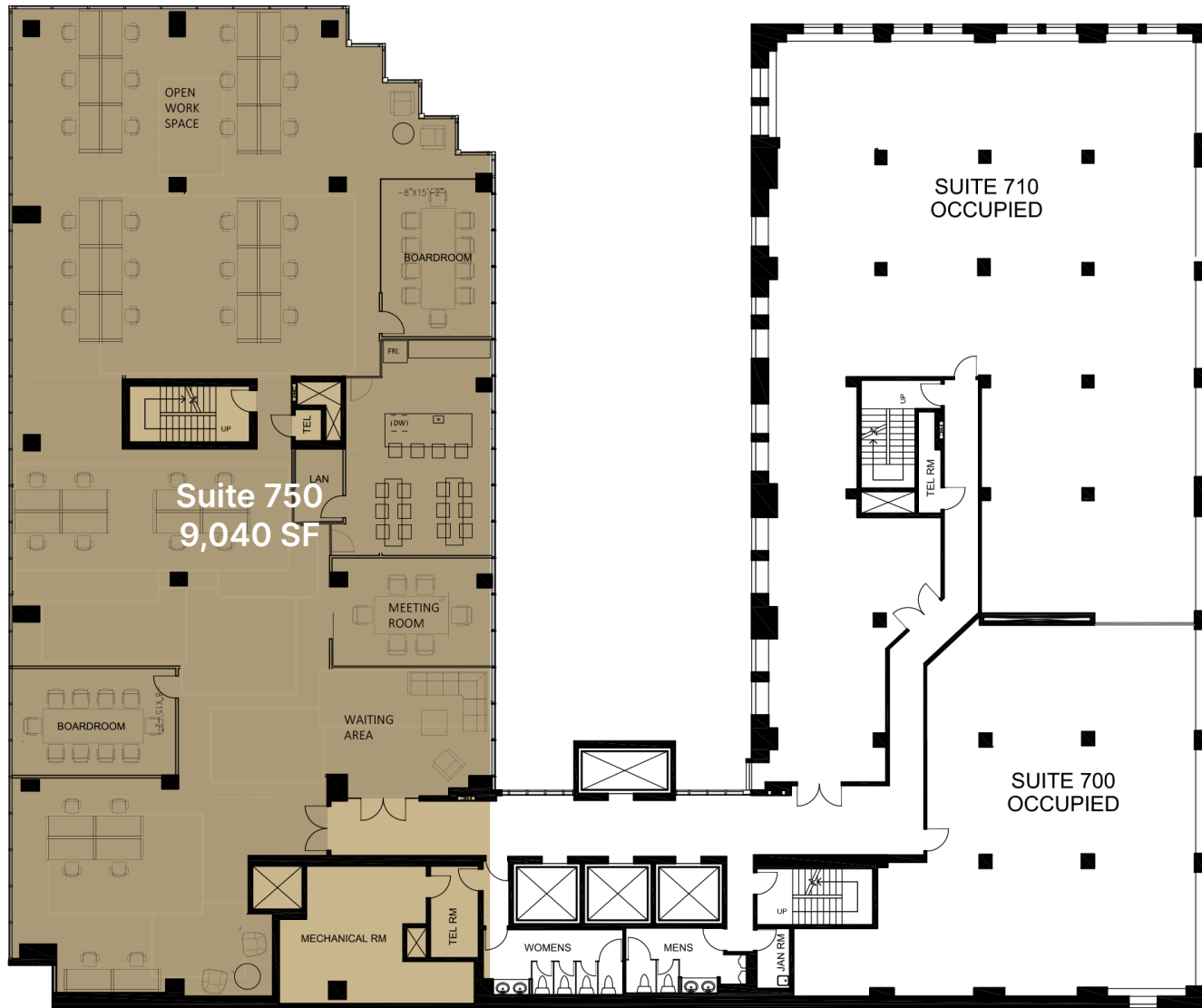
Suite 505 – 1,929 SF

Built out, primarily open concept with offices and large boardroom. Elevator lobby exposure.



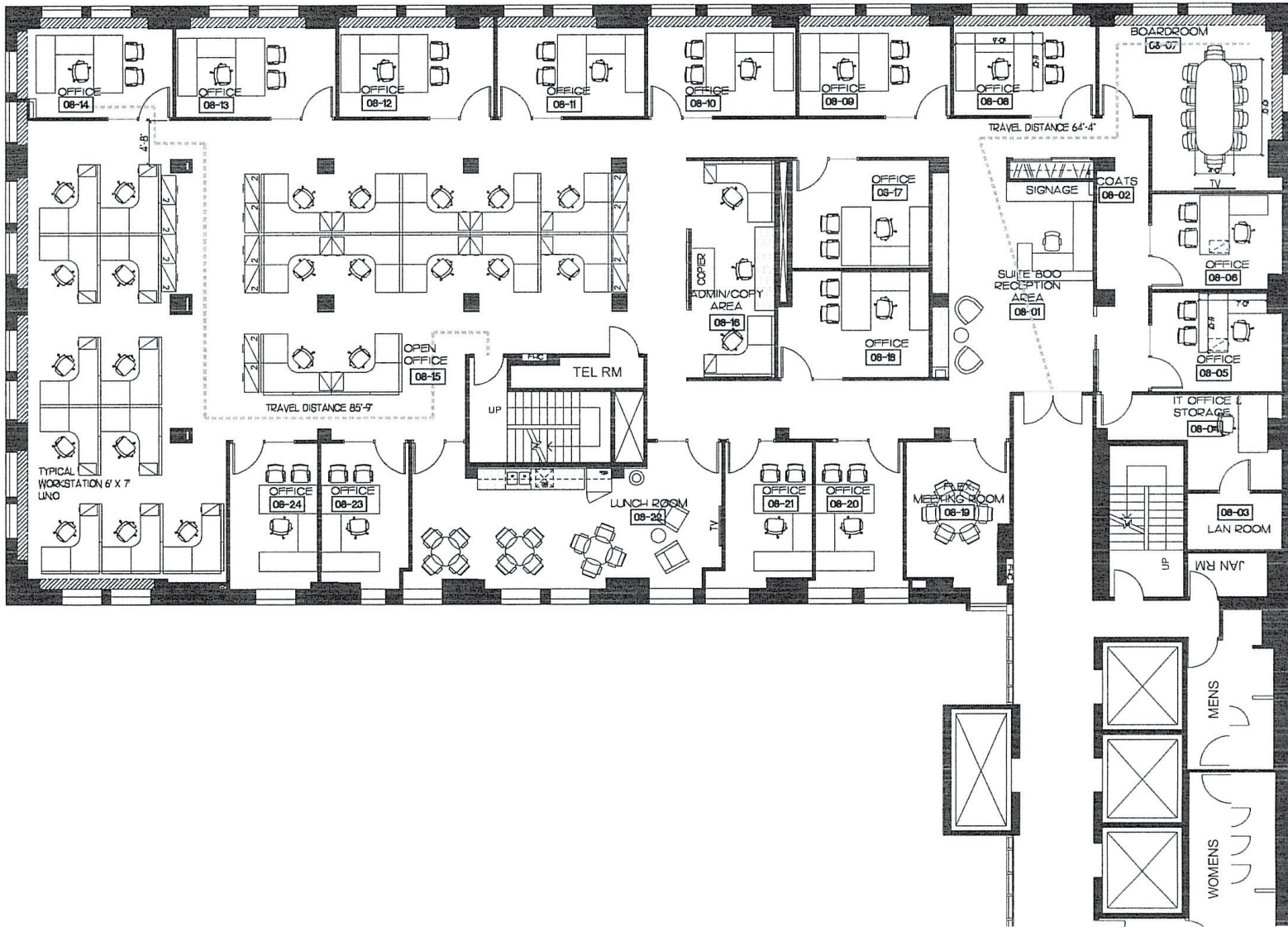
Suite 750 – 9,042 SF

Built out with offices and meeting rooms, reception and kitchenette. Open ceilings and elevator lobby exposure. Modified Suite – kitchen updated, paint, carpet, partially furnished. Possible to demise to approx. 7,000 SF



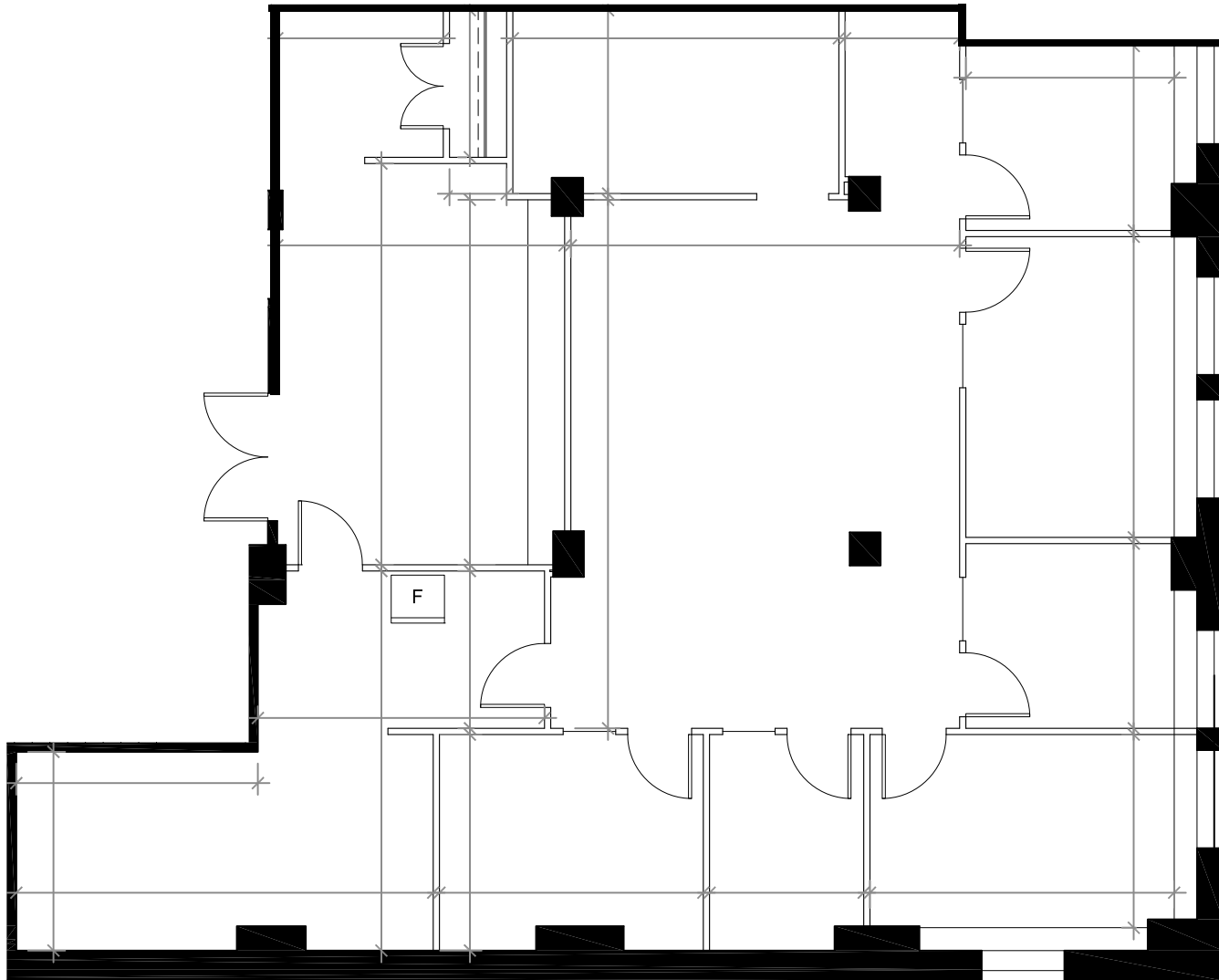
Suite 800 – 8,496 SF

Built out with offices and meeting rooms - professional services mix of internal offices, meeting rooms, open-plan area, reception and kitchenette.



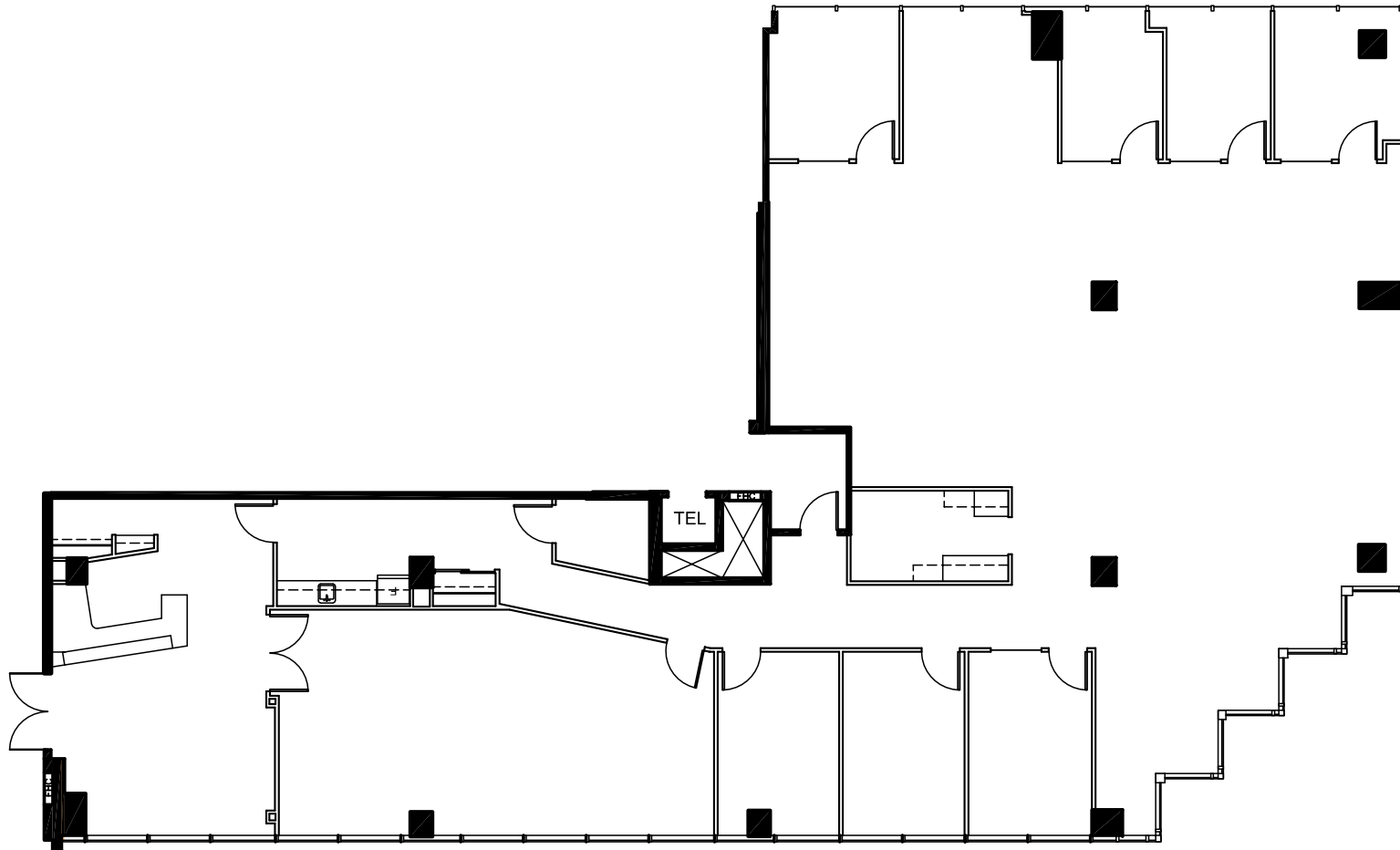
Suite 910 – 2,409 SF

Suite built out with 5 perimeter offices & boardroom, reception area and open area. Corner unit with elevator lobby exposure.



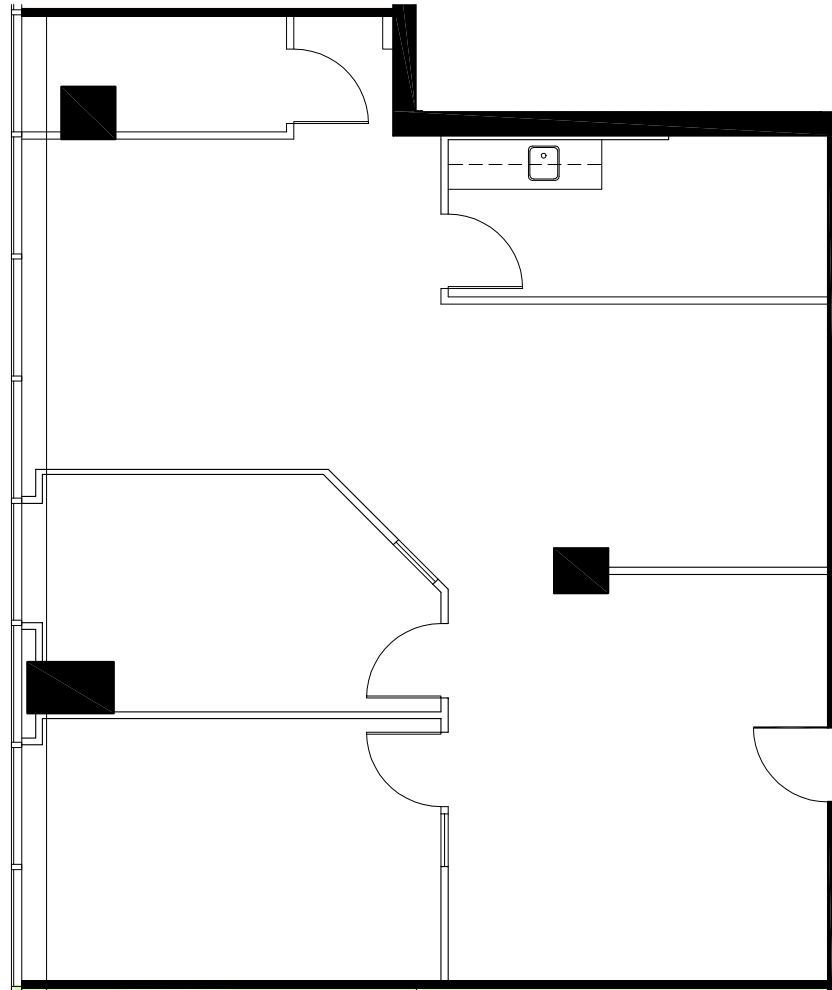
Suite 1070 – 5,362 SF

Suite built out with reception area, 7 private offices, boardroom, open office area, and kitchen.



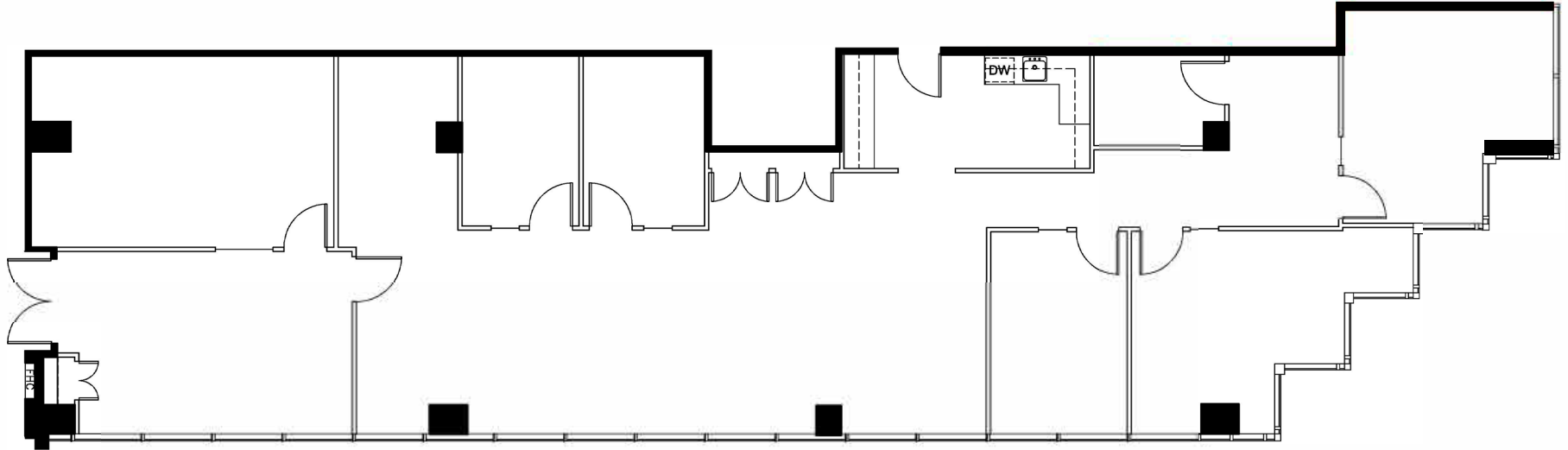
Suite 1150 – 1,512 SF

Built out with 2 large offices, reception area, kitchenette and open area for workstations. Landlord has gone on spec to paint, carpet, replace damaged ceiling tiles and light lenses refresh.



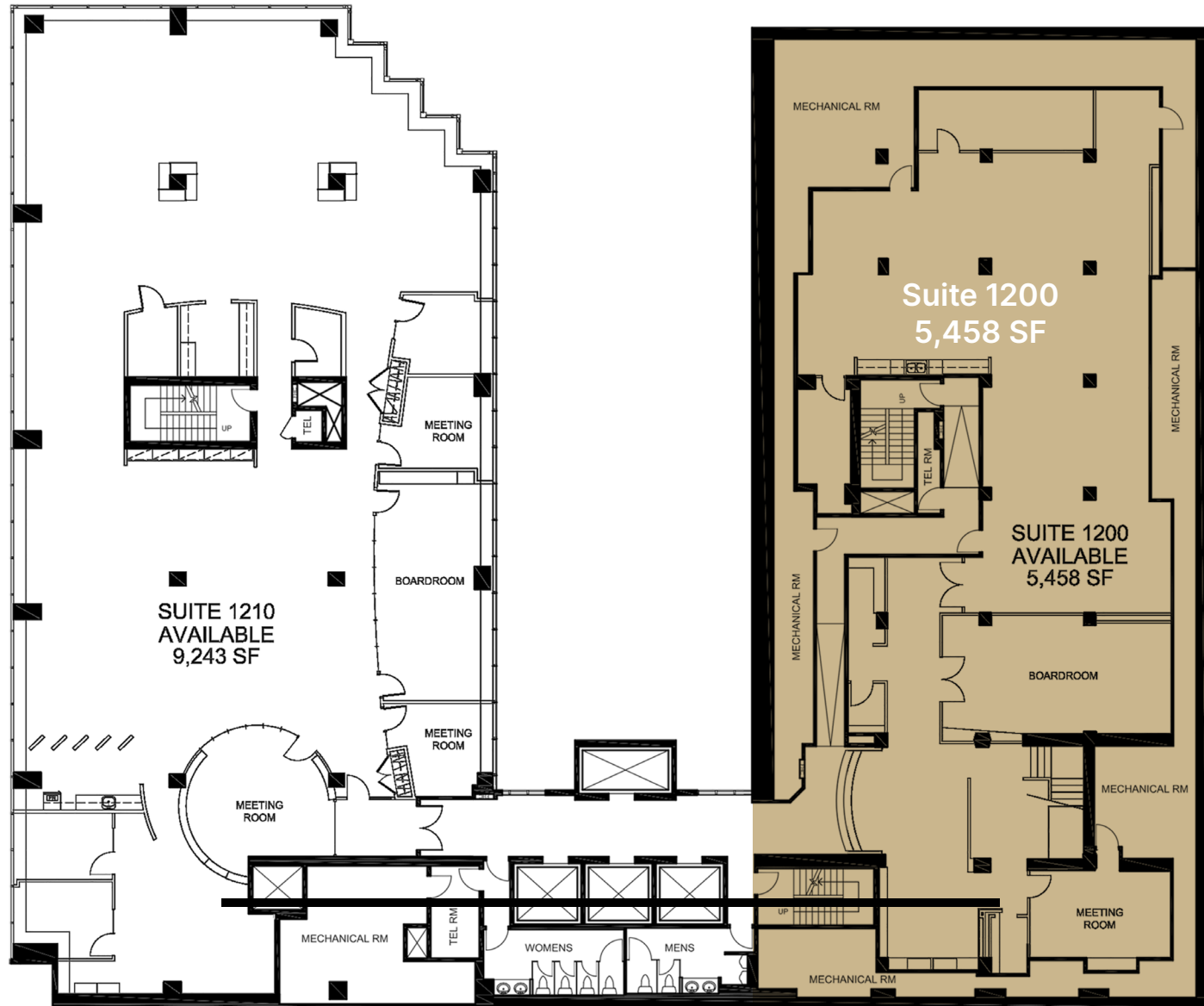
Suite 1160 – 3,334 SF

Suite built-out with reception area, 5 private offices, boardroom, open office area, and servery.



Suite 1200 – 5,459 SF

Unique opportunity at lower rates. Built out with offices and meeting rooms, open area and large amenity space. Contiguous - Suites 1320 & 1200 - 12,858 sq.ft, Suites 1310, 1320 & 1200 - 20,105 sq. ft



Suite 1310 – 7,246 SF

Suite 1310 built out with 8 offices and 3 meeting rooms, kitchen and open plan area.
Contiguous - Suites 1310 & 1320 - 14,646 sq.ft. Suites 1310, 1320 & 1200 - 20,105 sq. ft.



Suite 1320 – 7,400 SF

Built out full floor opportunity available with Suite 1310 for 14,644 SF. Suite can also be made contiguous with the 12th floor for a total of 29,345 SF.

