



AUSTIN, TEXAS

PLANNED OPENING 2022



## SECURE YOUR CUSTOM AVIATION FACILITY AT AUSTIN'S NEW PRIVATE AIRPORT

Austin's new GREENPORT International Airport (GIA) is on track to become operational in 2022. Located on the Colorado River just 17 miles from Austin's central business district and 10 miles from Austin Bergstrom International Airport (ABIA), this is the opportunity of a lifetime to be one of the first parties to secure a custom facility at this primely located, cutting-edge airport. GREENPORT is uniquely positioned to capture existing unmet demand and future market growth for larger business jets without competition.

**CBRE**





## CUSTOM AVIATION FACILITIES

- Flight departments and aircraft owners seeking hangar space
- FBOs
- Aircraft services centers
- Aircraft interiors operations
- MROs
- Charter operators
- Aircraft manufacturers and sales centers
- Aviation fuel providers
- Air cargo operations
- Aviation technology
- Medical and special services

Parties can collaborate with GREENPORT to customize facility designs tailored to their needs.

**GREENPORT International Airport is offering a build-to suit model for parties desiring to secure custom facilities at the airport.**







# GREENPORT International Airport HIGHLIGHTS

GREENPORT International Airport is situated on ±1,915 acres within the planned 5,000 acre GREENPORT campus and will be dedicated to serving the growing demand for larger business, private, and charter aircraft. Key features include:



No municipal zoning or building permits required so facilities can be move-in ready in record time



Privately owned  
U.S. Customs Port of Entry



Lowest jet fuel prices in the market:  
25% - 40% below other area airports



Secure, climate-controlled,  
state-of-the-art hangars



Aircraft eligibility for considerable  
savings on business personal  
property and sales taxes



On-site aircraft maintenance, repair and  
avionics services not currently available  
in Central Texas



No TSA control over GIA's  
operations/ No FAA approval required



The only emergency reliever airport for  
Austin Bergstrom International Airport  
in the region with Aircraft Rescue and  
Firefighting (ARFF) services





# A CENTRAL LOCATION WITH PRIVILEGED GLOBAL ACCESS

## 7,500 FT

Private general aviation airport with a runway that supports the largest business jets

## 100 MILLION

People within 1,000 nautical miles

## 500 MILLION

People within 2,000 nautical miles

## 3 BILLION

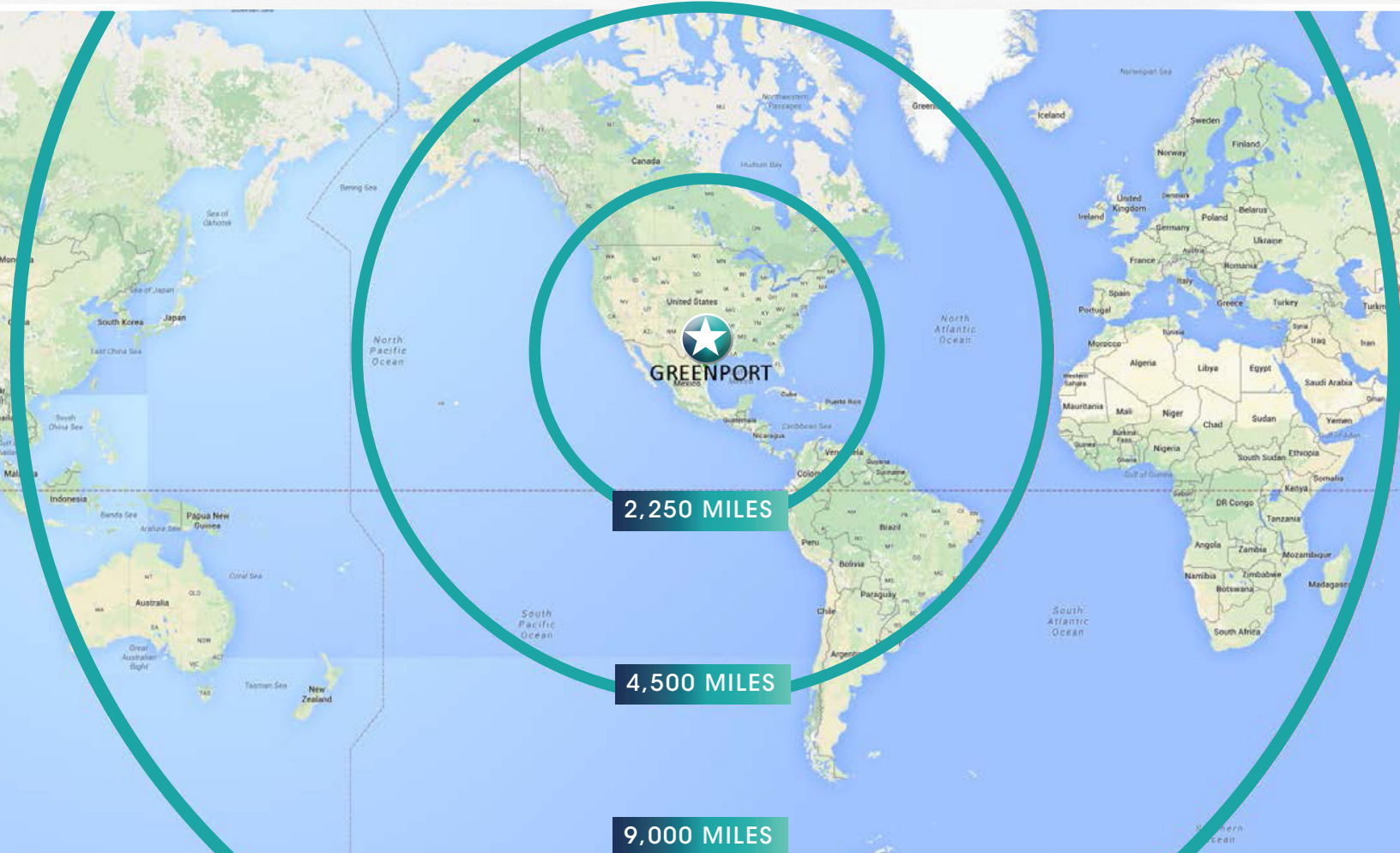
People within 7,000 nautical miles

## CUSTOMS

Privately-managed U.S. Customs Port of Entry with expedited passenger processing

## TSA

No U.S. Transportation Security Administration oversight







## **GREENPORT International Technology Center**

A unique attribute of the state-of-the-art GREENPORT International Airport will be its seamless union with a corporate campus that will be a global showcase for cutting-edge technologies. GREENPORT will feature a unique public-private partnership that will transform the region's economic landscape. Projections are that GREENPORT will generate over 40,000 permanent jobs by 2033 and has the potential to be one of the most significant economic drivers in Central Texas history.

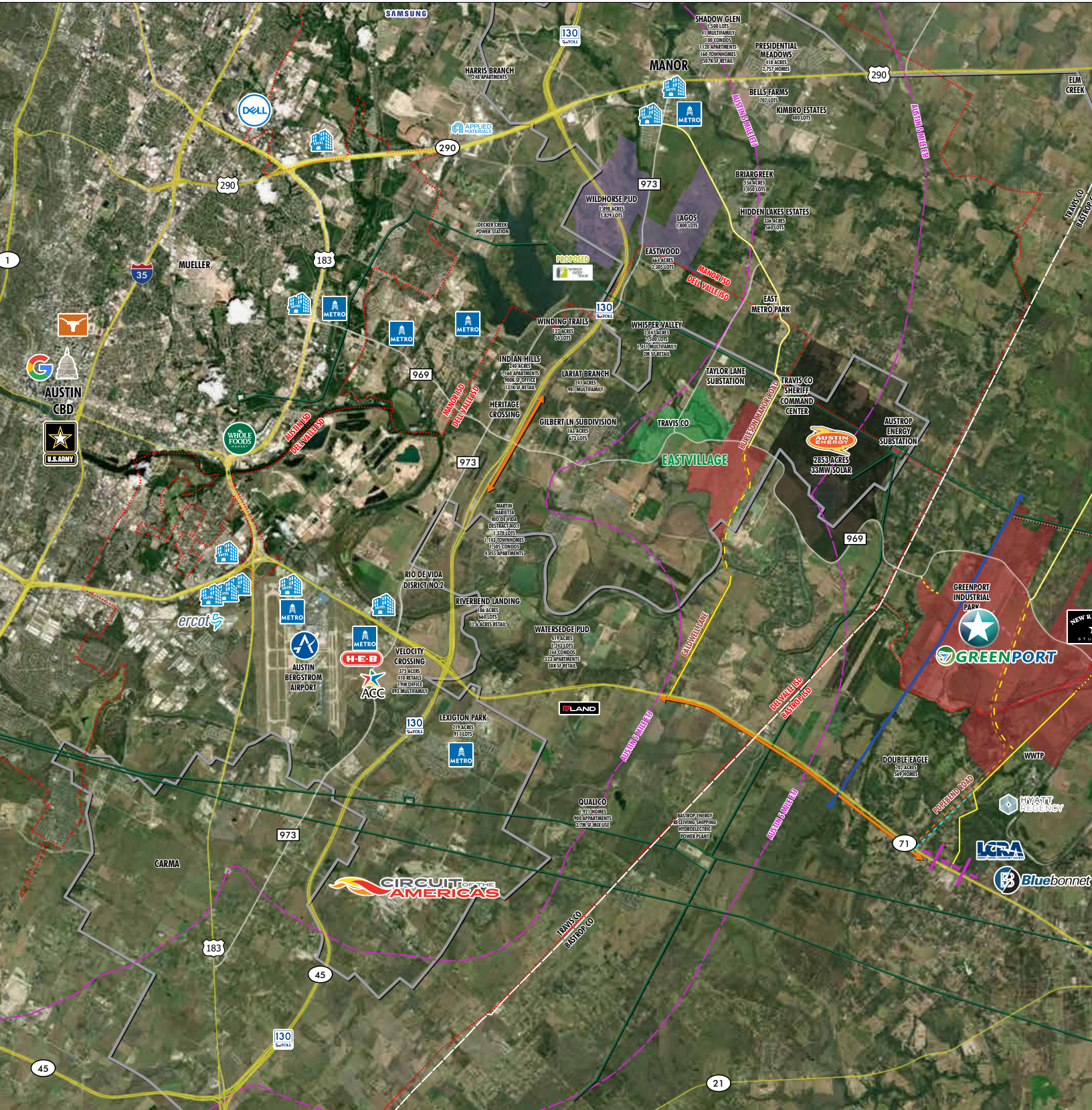
GREENPORT International Technology Center, (GITC), will be a corporate campus primarily hosting data centers, corporate offices, and government agencies with high-security requirements. "Through-the-fence" access to the airport will be offered. A limited, privately-managed approval process will significantly shorten development timelines, lower development costs, mitigate risk, and protect confidentiality of building plans and systems.





# GREENPORT

AUSTIN, TEXAS





# GREENPORT REGIONAL HIGHLIGHTS



More than 6,000 high tech companies with 130,000 employees in the Austin MSA and Central Texas



Adjacent to New Republic Studios, a \$170 MM movie studio and sound stage expansion in process



Highly successful 491-room Hyatt Lost Pines Resort across the Colorado River



Several major subdivisions with 54,000 approved residential lots within seven miles



36 startup incubators and accelerators in the area



Advanced manufacturing, life sciences, data and space technology fueling growth in Austin and Central Texas



Austin is the second fastest growing city in the United States, with ever-increasing affluence





# CONTACT

---

## **KATRIN GIST**

Chairwoman,  
Airport Properties Group  
+1 206 947 1399  
katrin.gist@cbre.com

## **GREG MARBERRY**

First Vice President  
+1 512 499 4914  
greg.marberry@cbre.com



© 2019 CBRE, Inc. All rights reserved. This information has been obtained from sources believed reliable, but has not been verified for accuracy or completeness. You should conduct a careful, independent investigation of the property and verify all information. Any reliance on this information is solely at your own risk. CBRE and the CBRE logo are service marks of CBRE, Inc. All other marks displayed on this document are the property of their respective owners. Photos herein are the property of their respective owners. Use of these images without the express written consent of the owner is prohibited. PMStudio\_December2019

**CBRE**