

32

Kennedy Road S.

Brampton | ON

53,665 Sq. Ft. of Industrial Food-Processing Space



Contact Us

John LaFontaine*
Vice Chairman
416 798 6229
john.lafontaine@cbre.com

*Sales Representative

Property Details

BUILDING SIZE	53,665 Sq. Ft.
LOT SIZE	2.21 Acres
OFFICE AREA	9,722 Sq. Ft.
INDUSTRIAL AREA	43,943 Sq. Ft.
CLEAR HEIGHT	Varies from 8' to 22'
SHIPPING	7 Truck Level Doors
POWER	600 Volts / 1200 Amps
ZONING	M2
PROPERTY TAXES	\$71,292.76 (2023)
ASKING PRICE	Speak to Listing Agent

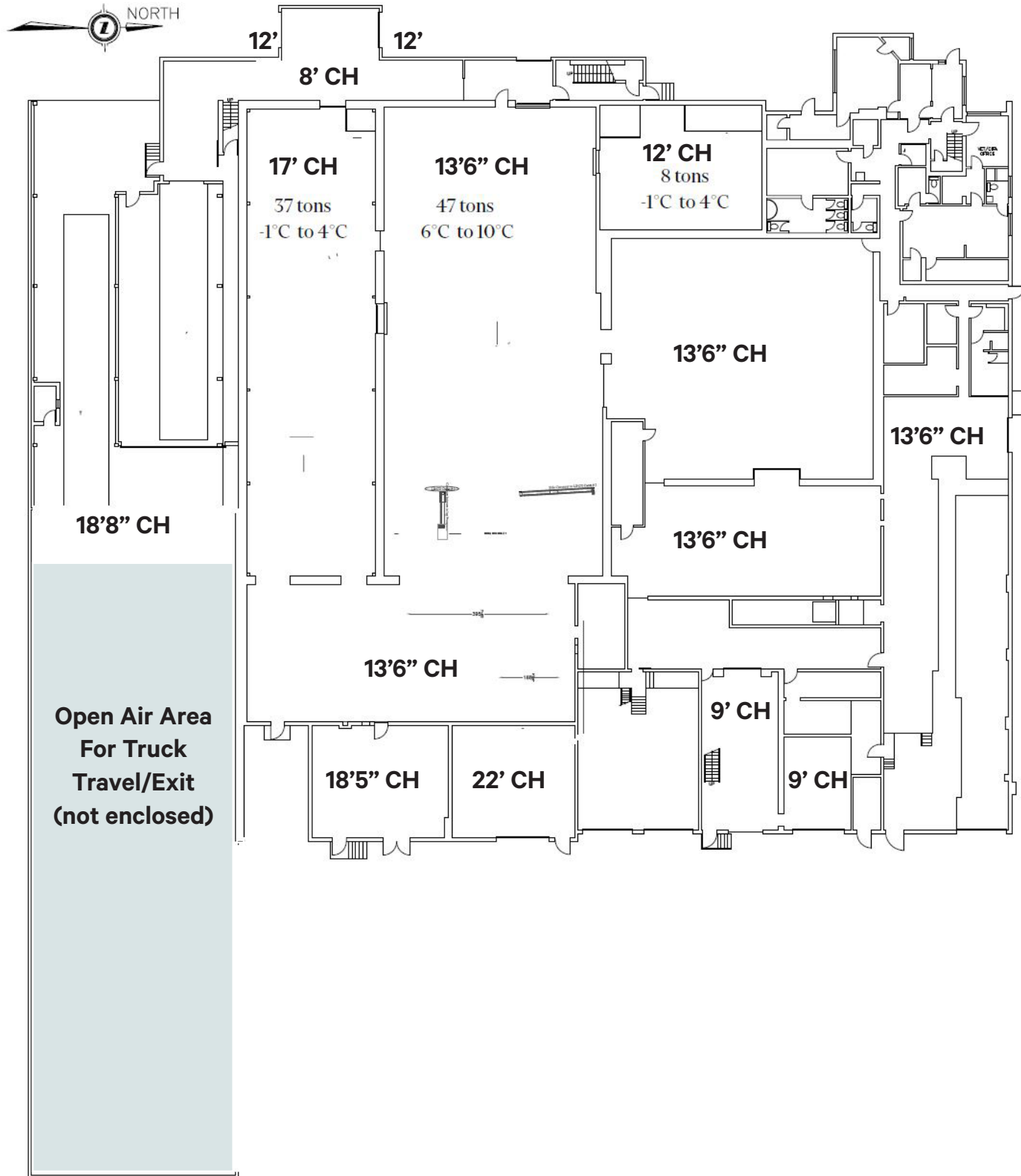
Comments

Freestanding food processing facility with cooler/freezer space (approximately 20,914 Sq. Ft. is refrigerated). Corner location, fully fenced and gated with existing guardhouse. Multiple processing areas and ample power available.

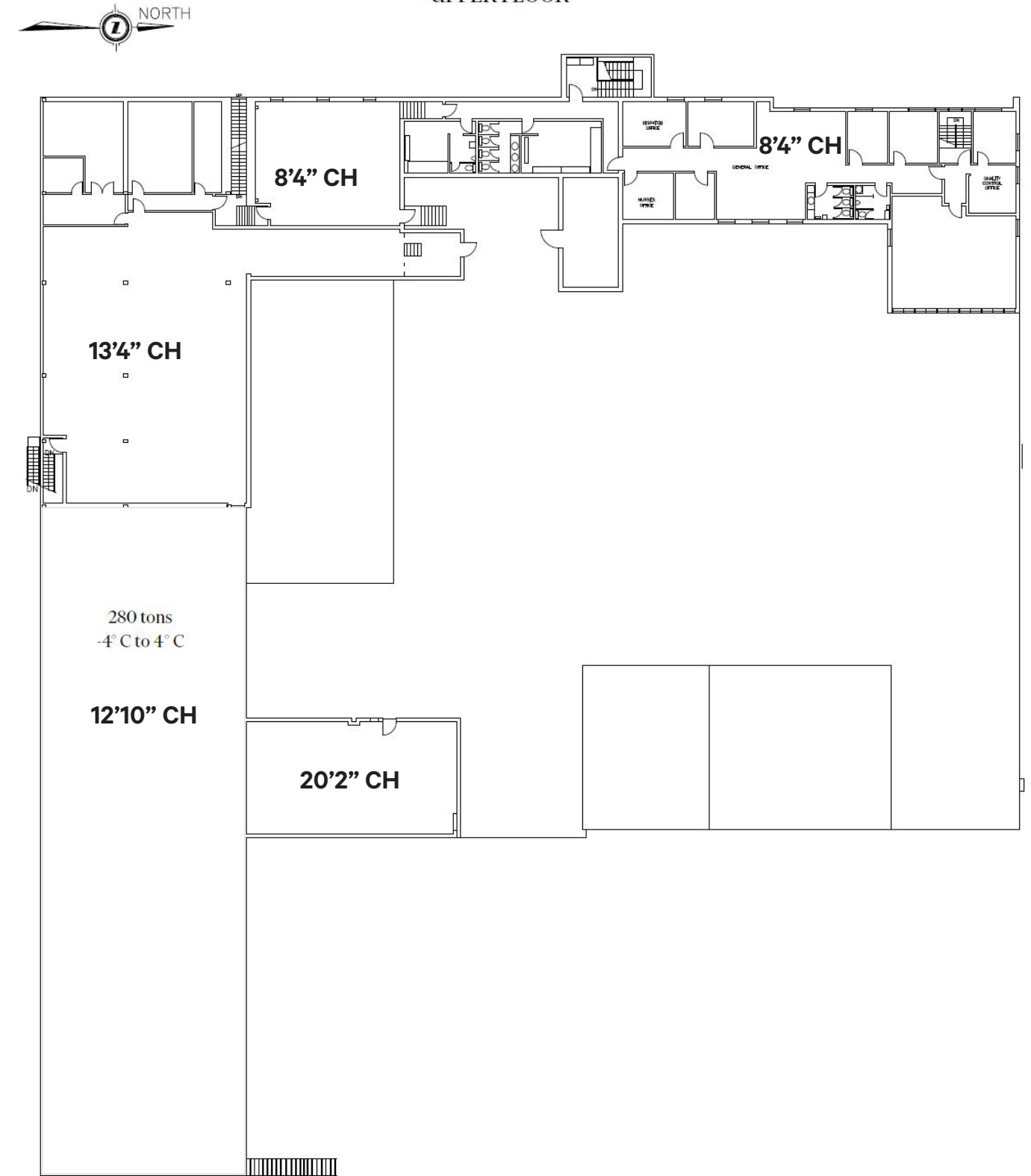


Floor Plans

GROUND FLOOR



UPPER FLOOR





Contact Us

John LaFontaine*

Vice Chairman

416 798 6229

john.lafontaine@cbre.com

*Sales Representative

This disclaimer shall apply to CBRE Limited, Real Estate Brokerage, and to all other divisions of the Corporation ("CBRE"). The information set out herein, including, without limitation, any projections, images, opinions, assumptions and estimates obtained from third parties (the "Information") has not been verified by CBRE, and CBRE does not represent, warrant or guarantee the accuracy, correctness and completeness of the Information. CBRE does not accept or assume any responsibility or liability, direct or consequential, for the Information or the recipient's reliance upon the Information. The recipient of the Information should take such steps as the recipient may deem necessary to verify the Information prior to placing any reliance upon the Information. The Information may change and any property described in the Information may be withdrawn from the market at any time without notice or obligation to the recipient from CBRE. CBRE and the CBRE logo are the service marks of CBRE Limited and/or its affiliated or related companies in other countries. All other marks displayed on this document are the property of their respective owners. All Rights Reserved. Mapping Sources: Canadian Mapping Services canadamapping@cbre.com; DMTI Spatial, Environics Analytics, Microsoft Bing, Google Earth