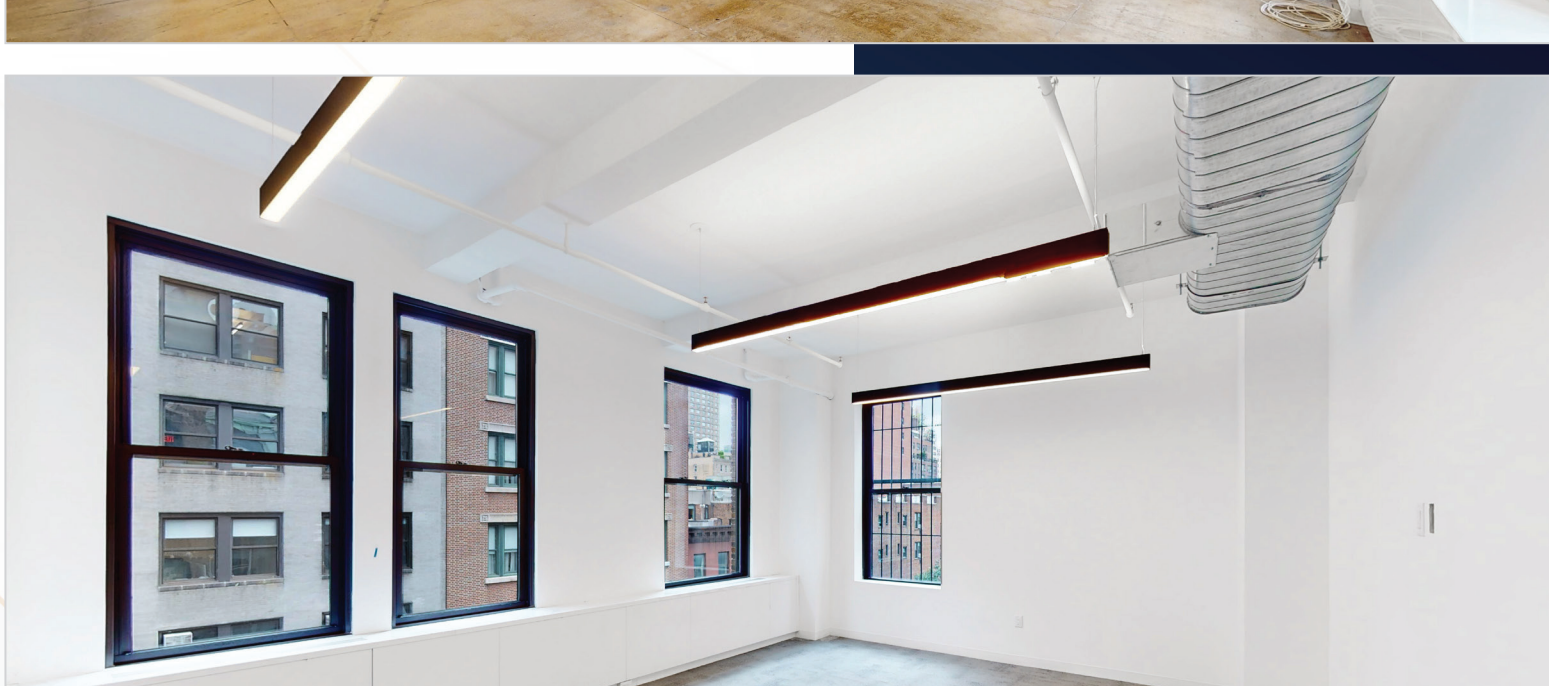
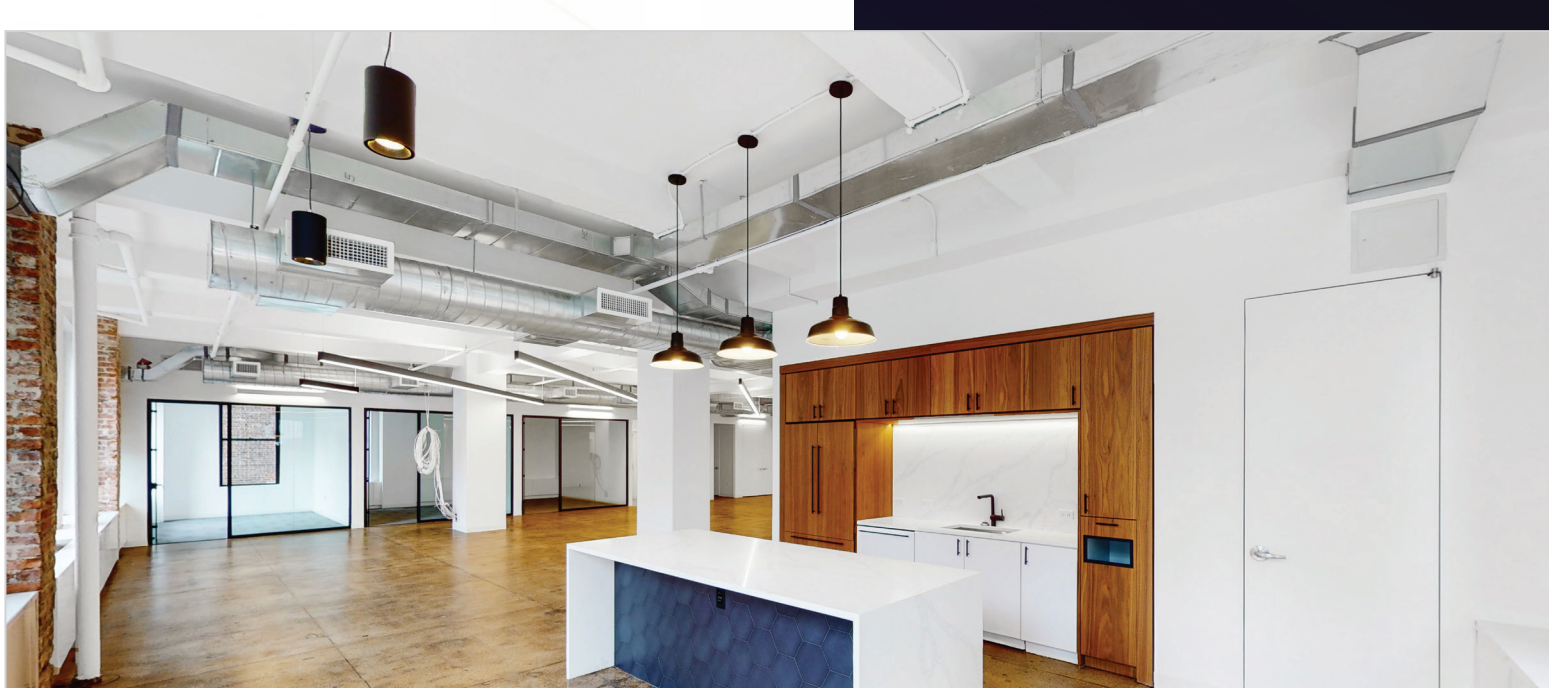
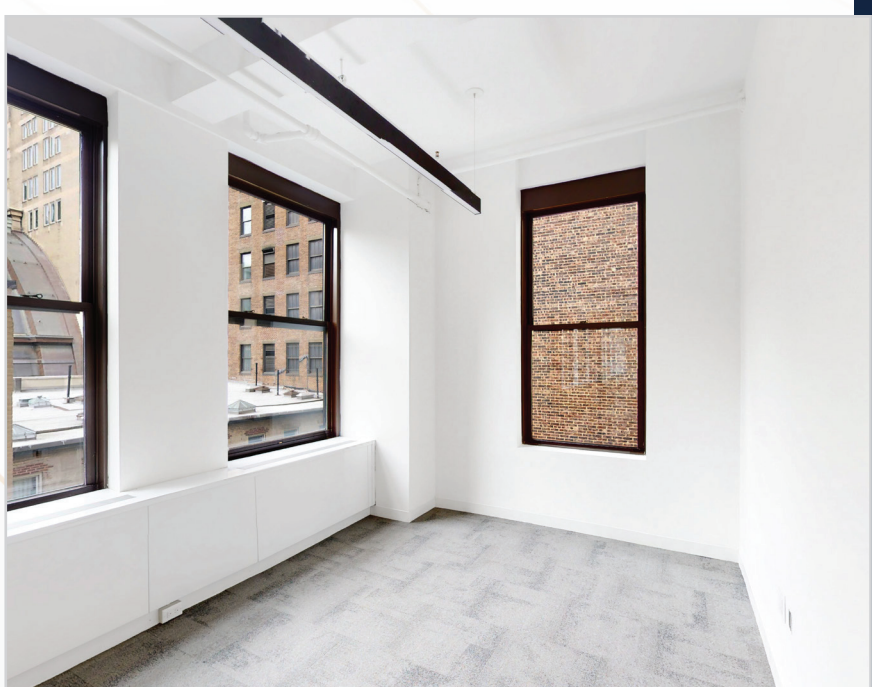
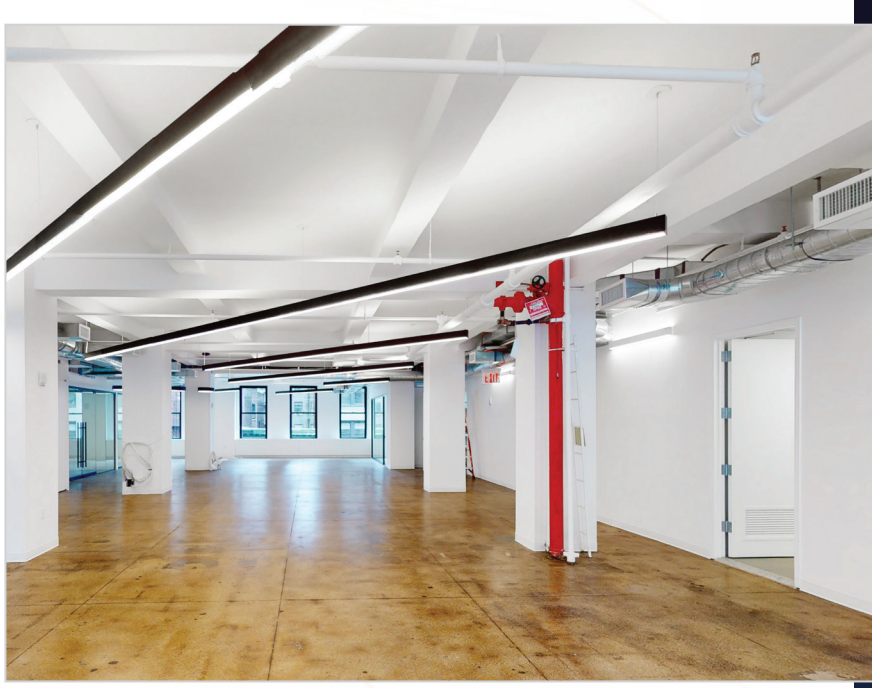


NEWMARK

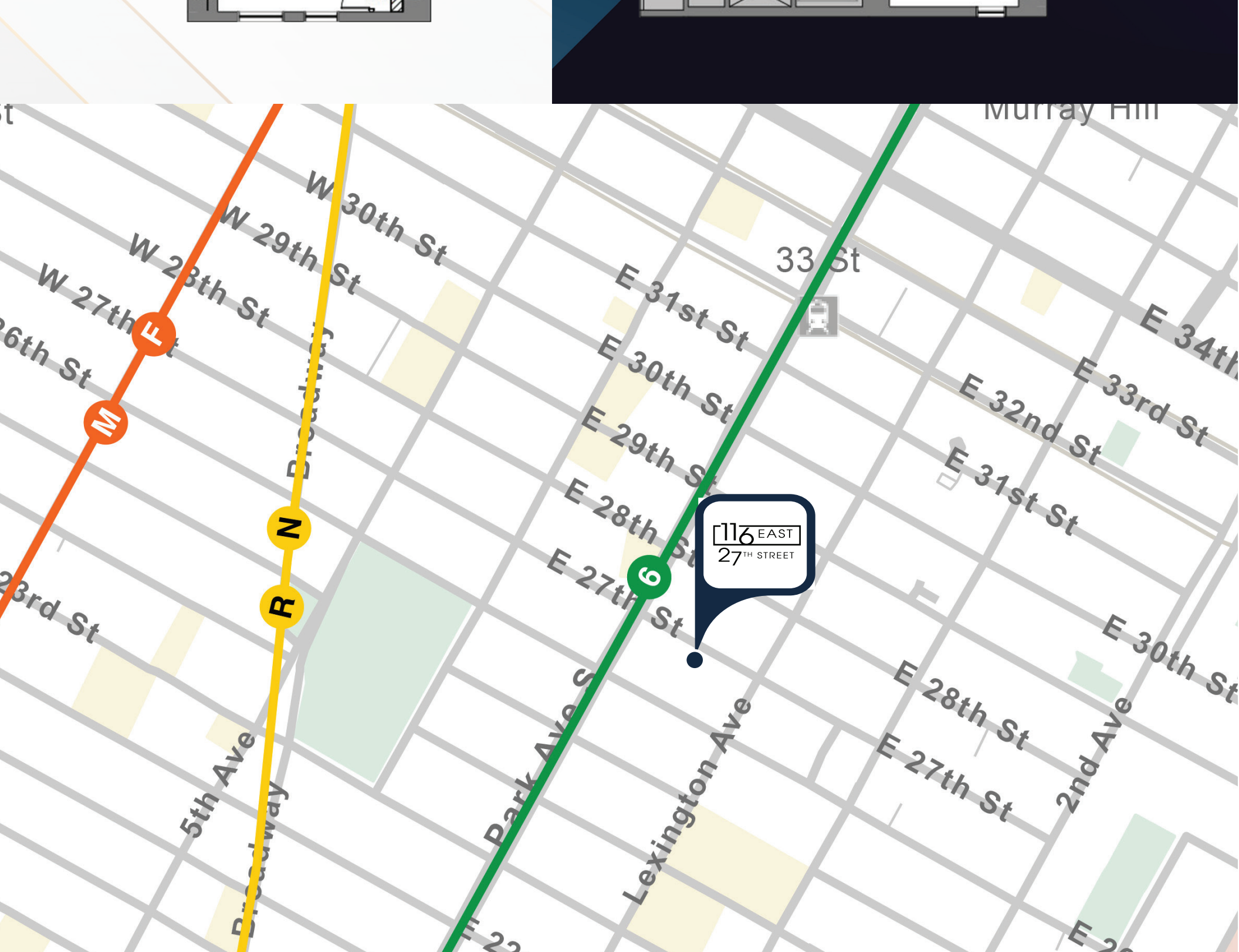
# 116 EAST 27<sup>TH</sup> STREET

FULL FLOORS UP TO  
7,400 RSF

BEAUTIFUL PREBUILT  
AND FURNISHED SUITES



ENTIRE 9<sup>TH</sup> FLOOR | 7,400 RSF  
TEST-FIT FLOOR PLAN



# 116 EAST 27<sup>TH</sup> STREET

FOR MORE INFORMATION CONTACT

**BRETT HARVEY**  
212-372-2099  
brett.harvey@nmrk.com

**ADAM SPECTOR**  
212-372-0769  
adam.spector@nmrk.com

**JENNIFER SCHREIBER**  
212-372-0715  
jennifer.schreiber@nmrk.com

**NATALIE SERIO**  
212-331-0123  
natalie.serio@nmrk.com

The information contained herein has been obtained from sources deemed reliable but has not been verified and no guarantee, warranty or representation, either express or implied, is made with respect to such information. Terms of sale or lease and availability are subject to change or withdrawal without notice.

©2024 Newmark. All Rights Reserved.

NEWMARK SAMCO  
PROPERTIES

# 116 EAST 27<sup>TH</sup> STREET

## SPACE AVAILABILITIES

~~ENTIRE 4<sup>TH</sup> FLOOR~~  
~~7,400 RSF~~ LEASED

ENTIRE 9<sup>TH</sup> FLOOR  
(PRE-BUILT WITH O3 DELIVERY)  
7,400 RSF

- Efficient Floor Plates With Full Glass Front
- Offices and Conference Rooms
- Open Collaborative Pantry and Lounge Space
- Tenant Controlled HVAC
- Newly Renovated Lobby
- Light on All 4 Sides
- Between Lexington and Park Avenues, Gramercy Park Submarket

# 116 EAST 27<sup>TH</sup> STREET

# 116 EAST 27<sup>TH</sup> STREET

# 116 EAST 27<sup>TH</sup> STREET