



# Cornell Oaks

CORPORATE CENTER

**HEARTWOOD**

15220 NW GREENBRIER PARKWAY  
BEAVERTON, OR 97006



**AVAILABLE FOR LEASE**  
MASTER PLANNED OFFICE  
FLEX CAMPUS



[VIEW OUR WEBSITE](#)

**CBRE**





# Cornell Oaks

CORPORATE CENTER



Waterside

Heartwood

Parkside

The Commons

Ridgeview

## HEARTWOOD HIGHLIGHTS



171,000 SF three-story  
multi-tenant  
Class A office building



Building has an  
atrium in the com-  
mon lobby with two  
water features



3rd Floor space  
with nice views



New amenity  
tenant lounge



Lease Rate:  
\$26.50 Full Service



Parking:  
4/1,000 per SF

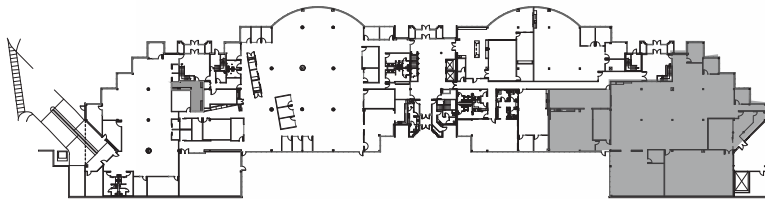
# HEARTWOOD

SUITE 110 | 14,610 RSF

AVAILABLE NOW



## KEY PLAN

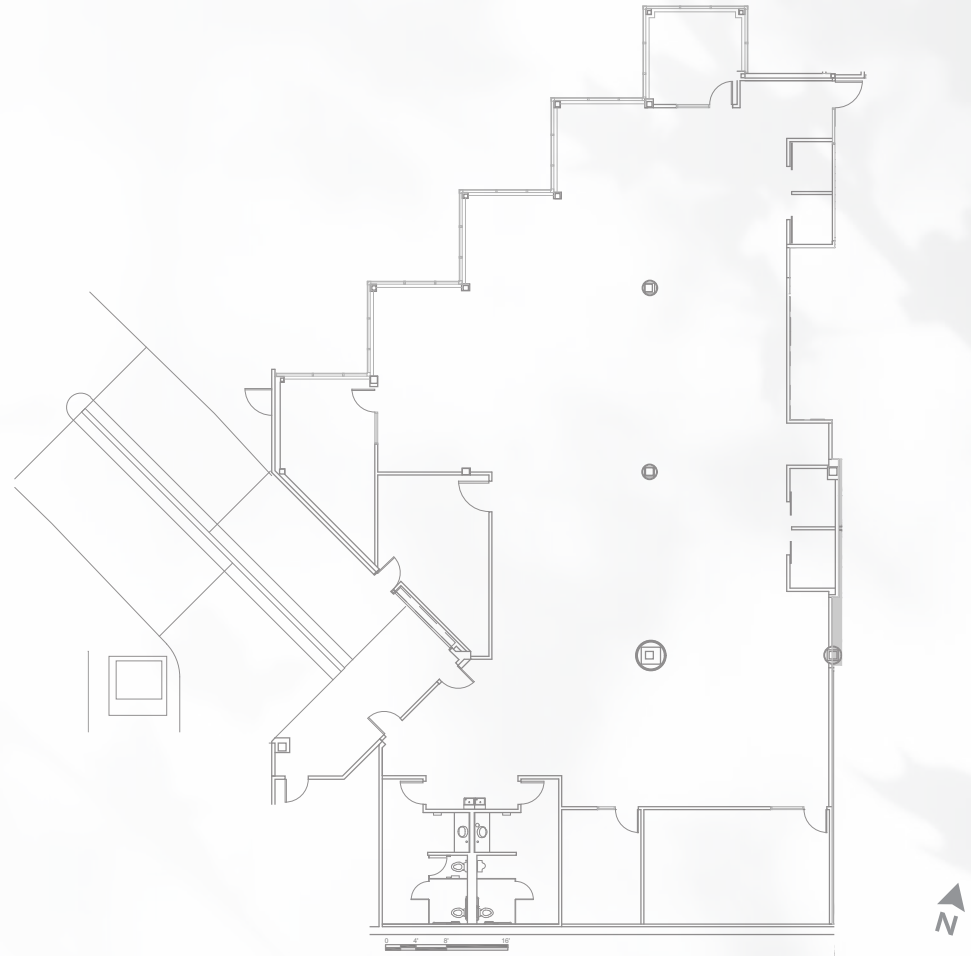
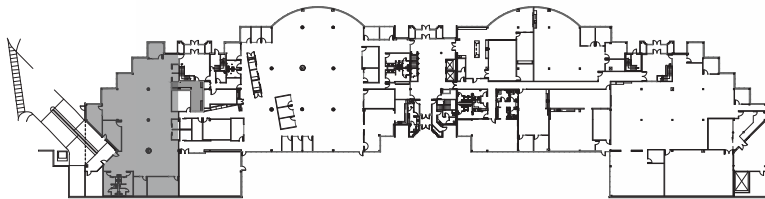


# HEARTWOOD

SUITE 180 | 7,314 RSF

AVAILABLE NOW

## KEY PLAN

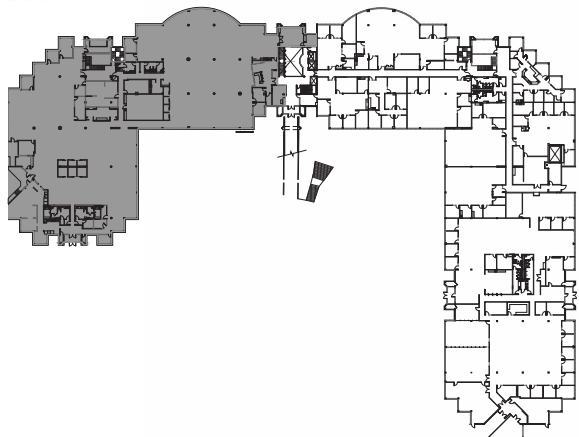


# HEARTWOOD

SUITE 200 | 37,563 RSF

AVAILABLE NOW

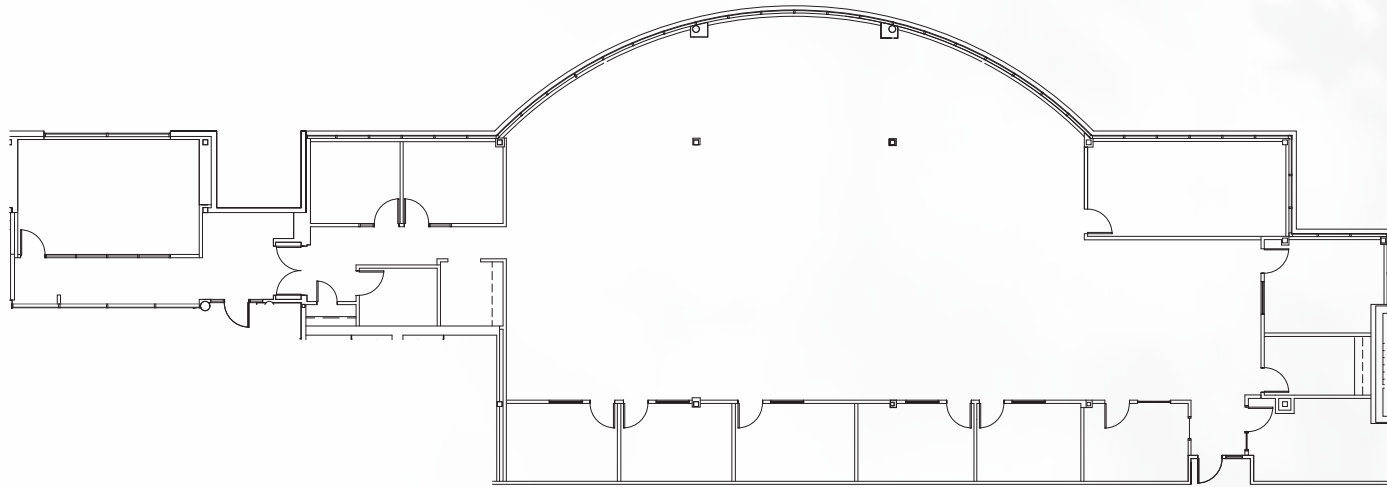
## KEY PLAN



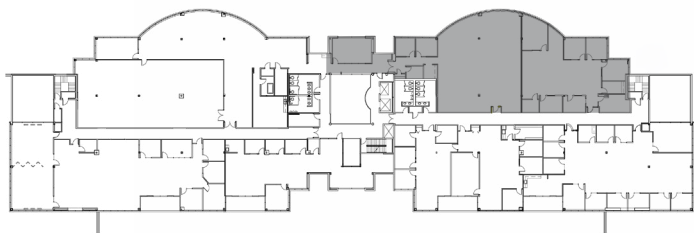
# HEARTWOOD

SUITE 375 | 7,722 RSF

AVAILABLE NOW



## KEY PLAN





# AMENITIES

LOBBY, MEETING, AND OUTDOOR





# AMENITIES

LOUNGE, FITNESS, BIKE STORAGE







# Cornell Oaks

CORPORATE CENTER

**HEARTWOOD**

**JOHN MEDAK**

First Vice President

+1 503 221 4854

[john.medak@cbre.com](mailto:john.medak@cbre.com)

Licensed in Oregon

**JENNIFER MEDAK**

First Vice President

+1 503 221 4853

[jennifer.medak@cbre.com](mailto:jennifer.medak@cbre.com)

Licensed in Oregon

© 2025 CBRE, Inc. All rights reserved. This information has been obtained from sources believed reliable, but has not been verified for accuracy or completeness. You should conduct a careful, independent investigation of the property and verify all information. Any reliance on this information is solely at your own risk. CBRE and the CBRE logo are service marks of CBRE, Inc. All other marks displayed on this document are the property of their respective owners, and the use of such logos does not imply any affiliation with or endorsement of CBRE. Photos herein are the property of their respective owners. Use of these images without the express written consent of the owner is prohibited.PMStudio\_May2025

**VISIT OUR WEBSITE**

[www.cornell-oaks-corporate-center.cbre-properties.com](http://www.cornell-oaks-corporate-center.cbre-properties.com)

**CBRE**