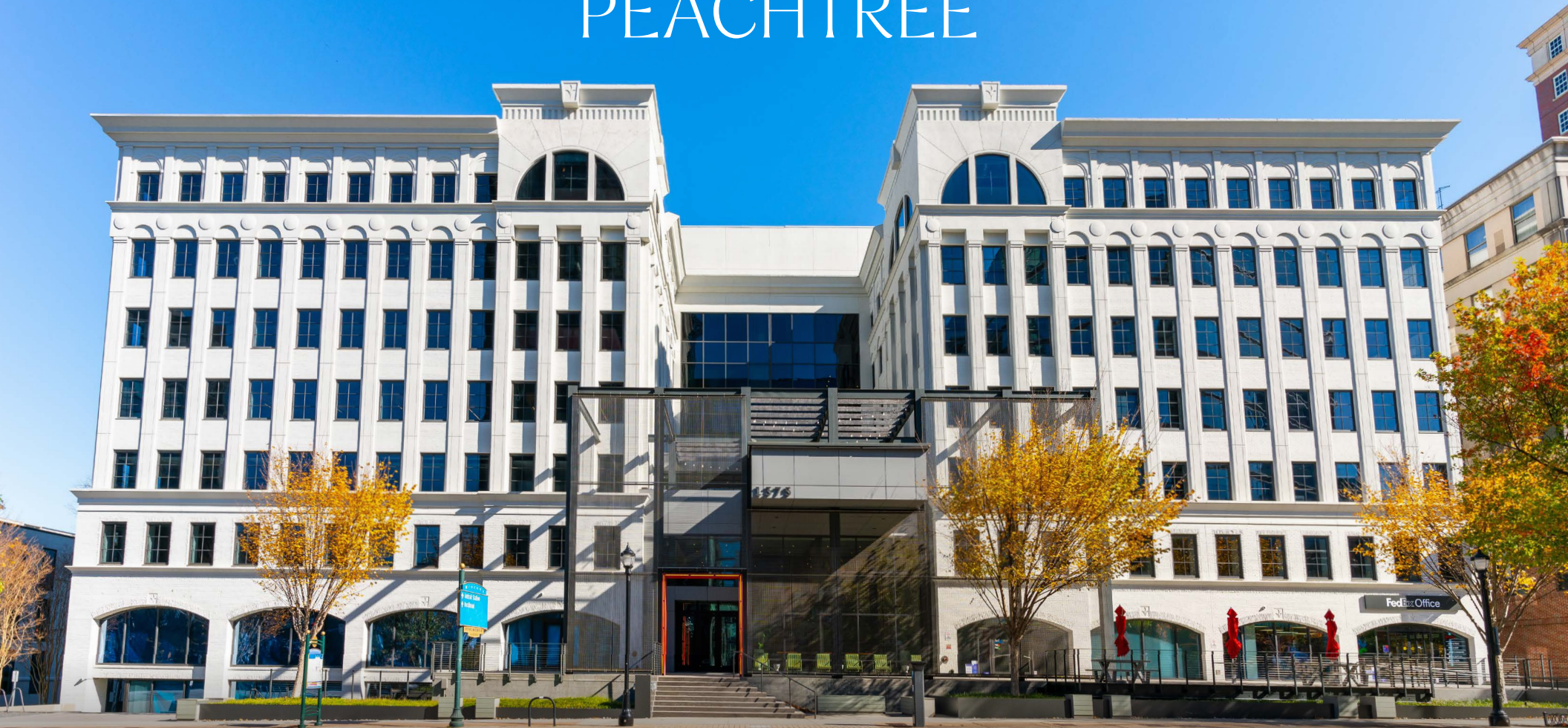


BESPOKE BRILLIANCE REDEFINE YOUR WORK ENVIRONMENT

1375 PEACHTREE



NEWMARK

WWW.1375PEACHTREE.COM

ELEVATE YOUR SPACE

At 1375 Peachtree, the modern and sophisticated exterior immediately captivates, setting the tone for a distinctive Midtown experience from the moment you arrive. Inside, a beautifully renovated lobby, premium amenities, and open collaboration spaces come together to unite people and spark innovation—seamlessly blending contemporary design with the timeless charm of Midtown to deliver an unparalleled office experience.

Availabilities ranging from

3,000 SF - 100,000 SF



BUILDING HIGHLIGHTS

ON-SITE AMENITIES

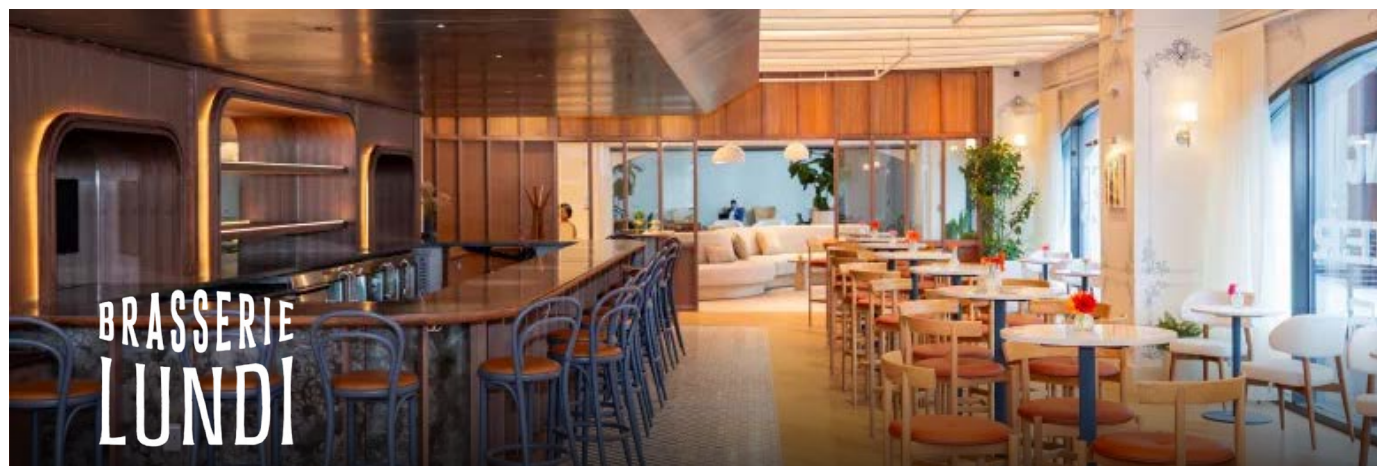
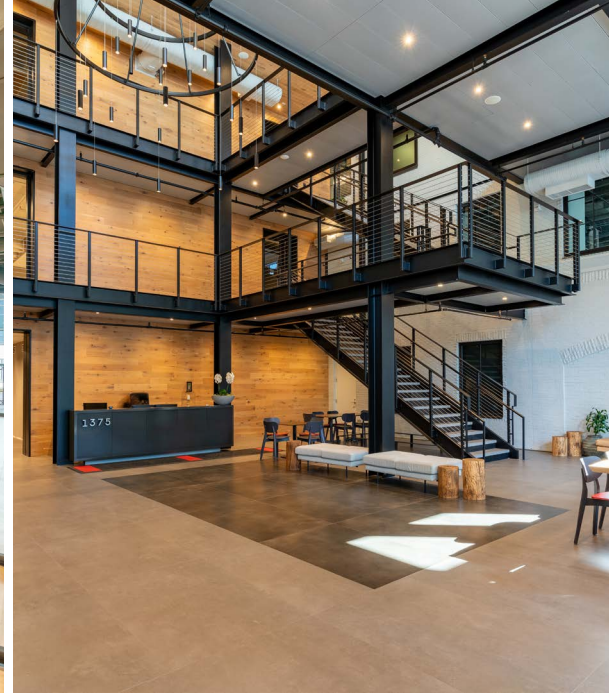
- **Now Open:** Brasserie Lundi and Peacherie
- Expansive Group and Individual Seating Areas
- Recently Renovated Lobby with Open Staircase and Pristine Finishes
- Collaboration Spaces
- Conferencing Facility
- Street Level Seating
- Fitness Center with Showers and Lockers
- Indoor Bike Storage
- 1375 House Car Available M-F 11:00AM - 2:00 PM

EXTERIOR FEATURES

- Modernized Façade
- Glass and Steel Grand Entrance
- Street Level Seating

OUTDOOR TENANT AMENITY DECK

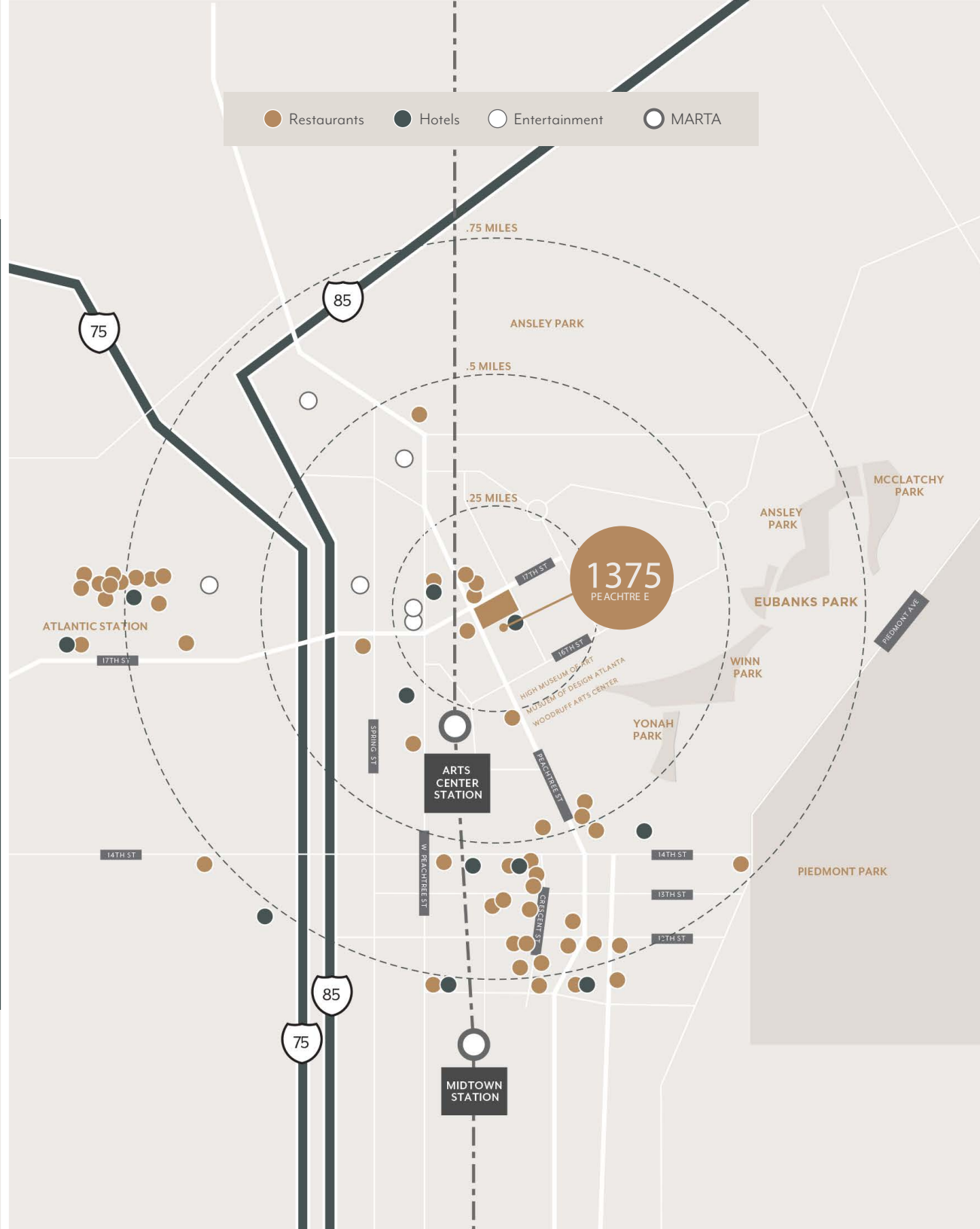
- Midtown Views
- Indoor and Outdoor Space



THE ADVANTAGE

As Midtown's front porch, 1375 Peachtree provides unparalleled proximity to Atlanta's renowned culinary, retail, arts, and entertainment districts. With effortless access to highways and transit options only minutes away, your daily commute is guaranteed to be smooth and convenient.

Position your company at 1375 Peachtree and experience the strategic edge of a premier Midtown location. Situated in the vibrant heart of Atlanta, this workplace delivers a highly desirable modern business lifestyle, perfect for attracting and retaining the area's top talent.



MIDTOWN WALKABILITY

Less Than a 10 MIN WALK

- Piedmont Park
- Atlanta Botanical Garden
- Atlanta Beltline
- Fox Theatre

Less Than a 5 MIN WALK

- Colony Square
- The High Museum of Art
- Woodruff Arts Center
- SCAD
- Ansley Park

20+ HOTELS

within a 1 mile radius

- Loews Atlanta Hotel
- Four Seasons
- Hyatt

15+ MULTIFAMILY PROPERTIES

within a 1 mile radius

including Greystar's new Micro-Unit Project that will be right across the street from 1375 Peachtree Hyatt

50+ RESTAURANTS & BARS

within a 1 mile radius

- | | | | | |
|---------------------|--------------------|-----------------------|-------------------------|--------------------------|
| - Lyla Lila | - Boqueria | - South City Kitchen | - Tabla | - Hudson Grille Midtown |
| - STK Steakhouse | - Saints + Council | - Nagomiya | - Rowdy Tiger | - Establishment |
| - Ecco Midtown | - Establishment | - AltaToro | - Saltwood | - Saints + Council |
| - 5Church Midtown | - Bar Margot | - El Viñedo Local | - Botica | - Tuk Tuk Thai Food Loft |
| - Rumi's Kitchen | - Brasserie Margot | - Pasta da Pulcinella | - Poor Calvin's | - Nan Thai Fine Dining |
| - Serena Pastificio | - The Consulate | - Bulla Gastrobar | - Livingston Restaurant | - MCK Kitchen |



1375

1375

100

TRANSIT & ACCESSIBILITY

MARTA ACCESS

- Arts Center Station (0.3 miles)
- Midtown Station (0.9 miles)

TREE-LINED SIDEWALKS

- 14 miles of existing sidewalks
- Two more planned

INTERSTATE ACCESS

- Straight shot to I-75/I-85
- Interchange via 17th Street

TOP TALENT POOLS

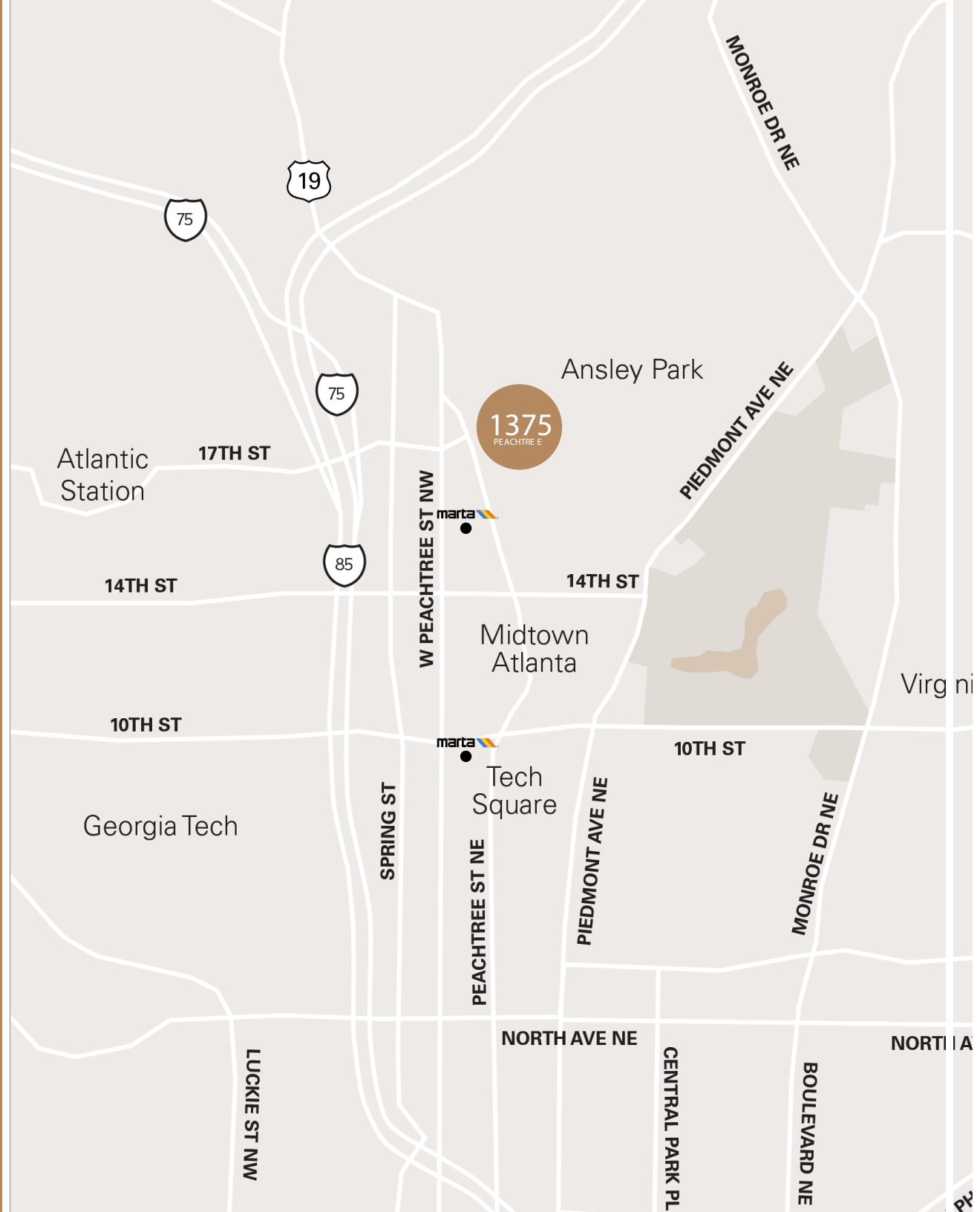
- Georgia Tech
- Emory University
- SCAD Atlanta
- Georgia State University
- Morehouse
- Spelman
- Clark Atlanta University

CONNECTED BIKE LANES

- 5 miles of existing bike lanes
- 11 more planned bike lanes

NEARBY NEIGHBORHOODS

- Ansley Park
- Westside
- Morningside
- Virginia Highlands



SETTING THE HIGHEST STANDARD IN MIDTOWN

At 1375 Peachtree, experience **Midtown redefined**. The property offers a collection of modern amenities and first-class conveniences designed to elevate every part of your day. Whether you're hosting a VIP client, grabbing a quick bite, recharging with a workout, or savoring a morning coffee, everything you need is just steps away.

New to the building are **Brasserie Lundi**, a contemporary French bistro offering an elegant dining experience, and **Peacherie**, a refined Southern-inspired concept celebrating seasonal ingredients and local flavors—perfect for both client lunches and after-work gatherings.

With **24/7 on-site security and dedicated property management**, 1375 Peachtree ensures a seamless, hospitality-driven environment where convenience and sophistication meet.

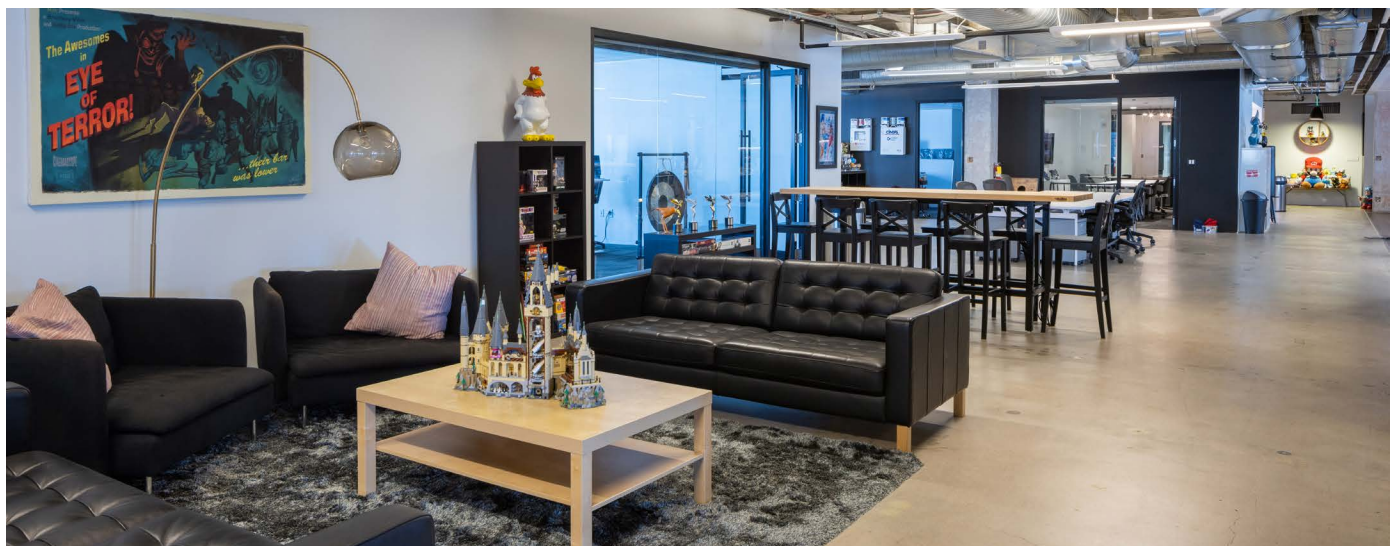


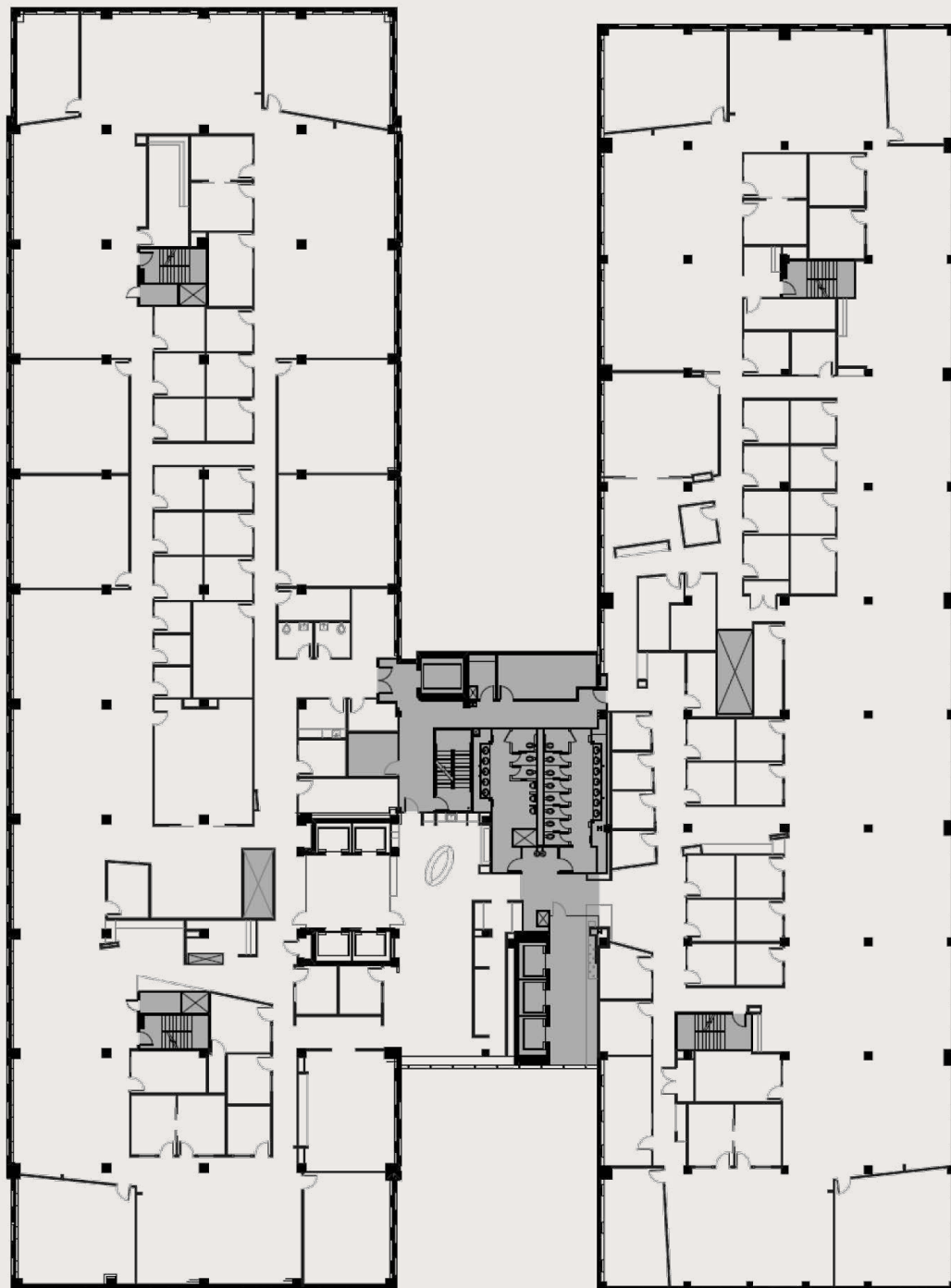
PEACHERIE



WORKSPACES THAT INSPIRE WHAT'S NEXT

As the modern workplace continues to evolve, so does the need for environments that encourage creativity, connection, and collaboration. 1375 Peachtree offers adaptable, forward-thinking workspaces designed to bring people together and inspire innovation. Featuring flexible layouts, smart technology, and a refined, modern aesthetic, this is where productivity thrives and the next generation of ideas takes shape.





TYPICAL FLOOR PLATE

26,000 - 52,000 SF

Large 100,000 SF Block of Space
Available

Prominent Exterior Signage Facing
Peachtree Street



1375

PEACHTREE

WWW.1375PEACHTREE.COM

Broker Contacts:

Brad Kirschner
Senior Managing Director
† 404-509-5930
brad.kirschner@nmrk.com

Stewart Thrash
Senior Managing Director
† 404-926-1074
stewart.thrash@nmrk.com

Craig Kalinowski
Executive Managing Director
† 404-806-2513
craig.kalinowski@nmrk.com

RJ Zurak
Senior Managing Director
† 770-552-2420
rj.zurak@nmrk.com

NEWMARK

The information contained herein has been obtained from sources deemed reliable but has not been verified and no guarantee, warranty or representation, either express or implied, is made with respect to such information. Terms of lease and availability are subject to change or withdrawal without notice.