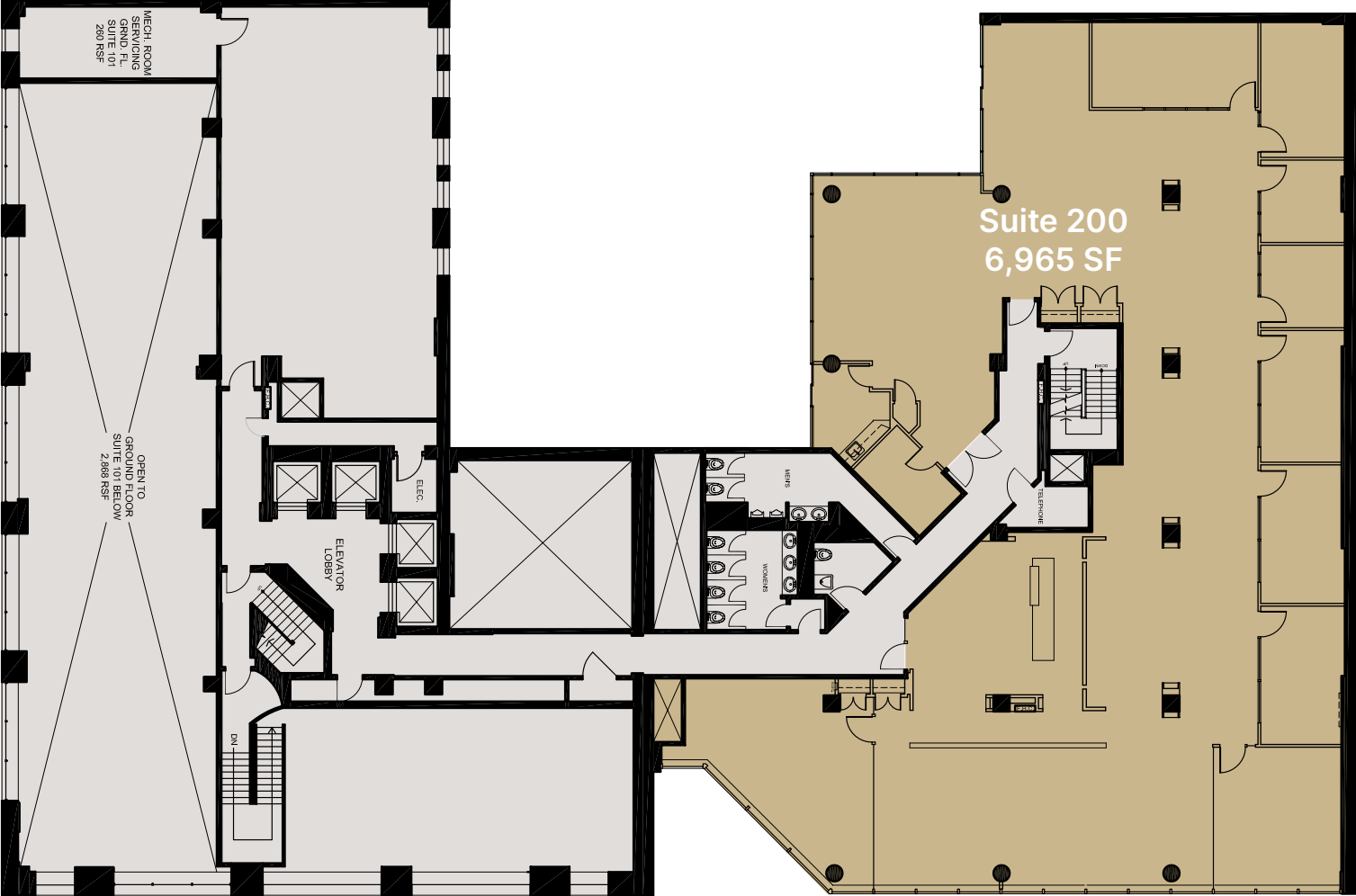


FLOOR PLANS

330 Bay St.

dream  + **CBRE**

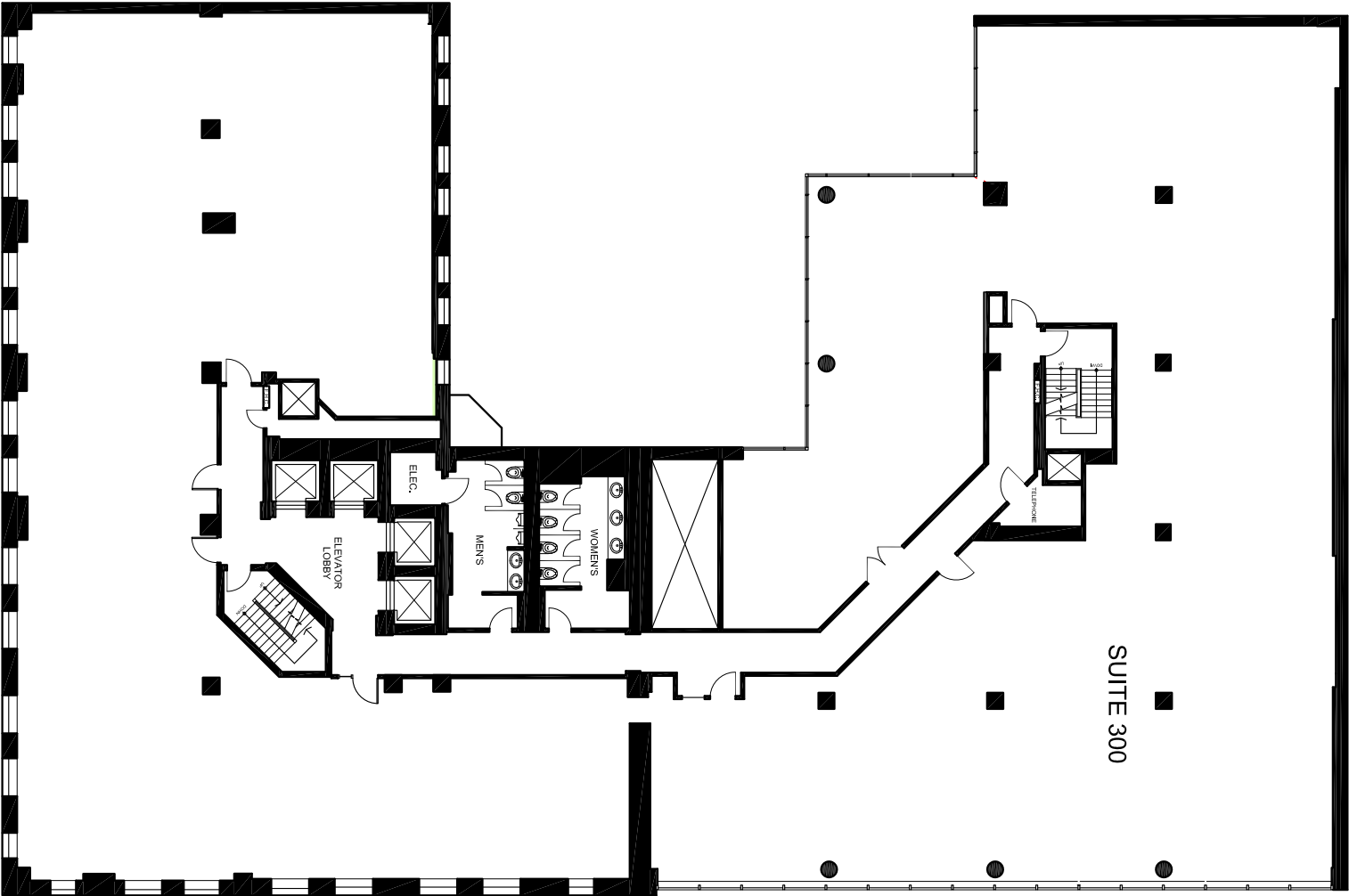
Suite 200 – 6,965 SF



Suite 300 – 13,347 SF

Full floor suite in base building condition with view overlooking atrium. Feasibility Plan shown above.

[Virtual virtual tour*](#) ↗

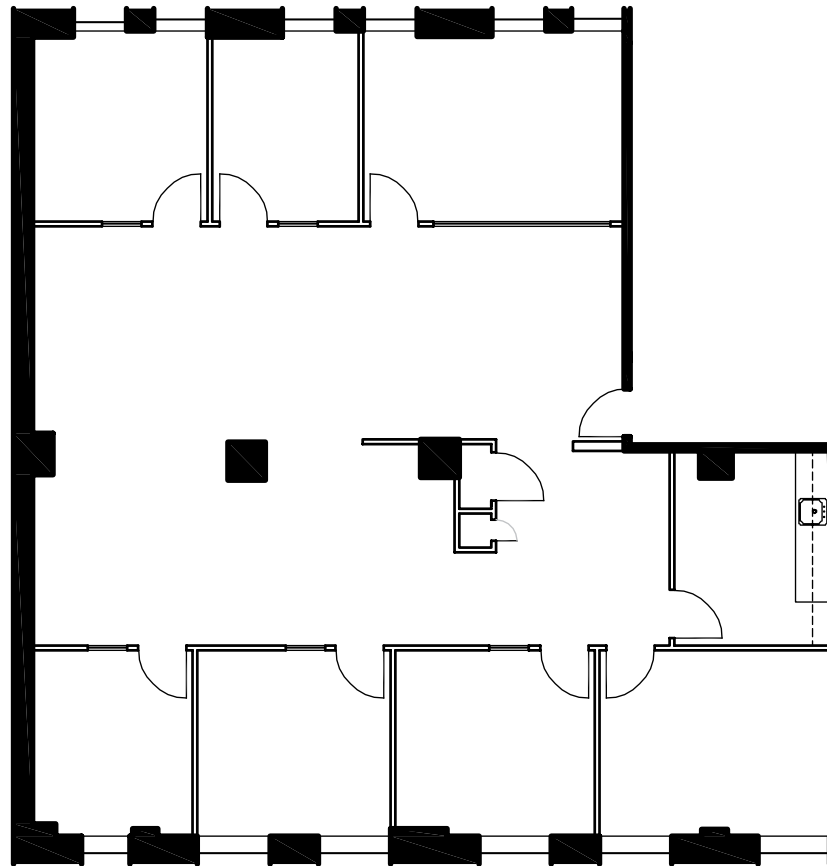


*Virtual tour is artist rendering and not as delivered, suite is in base building condition.



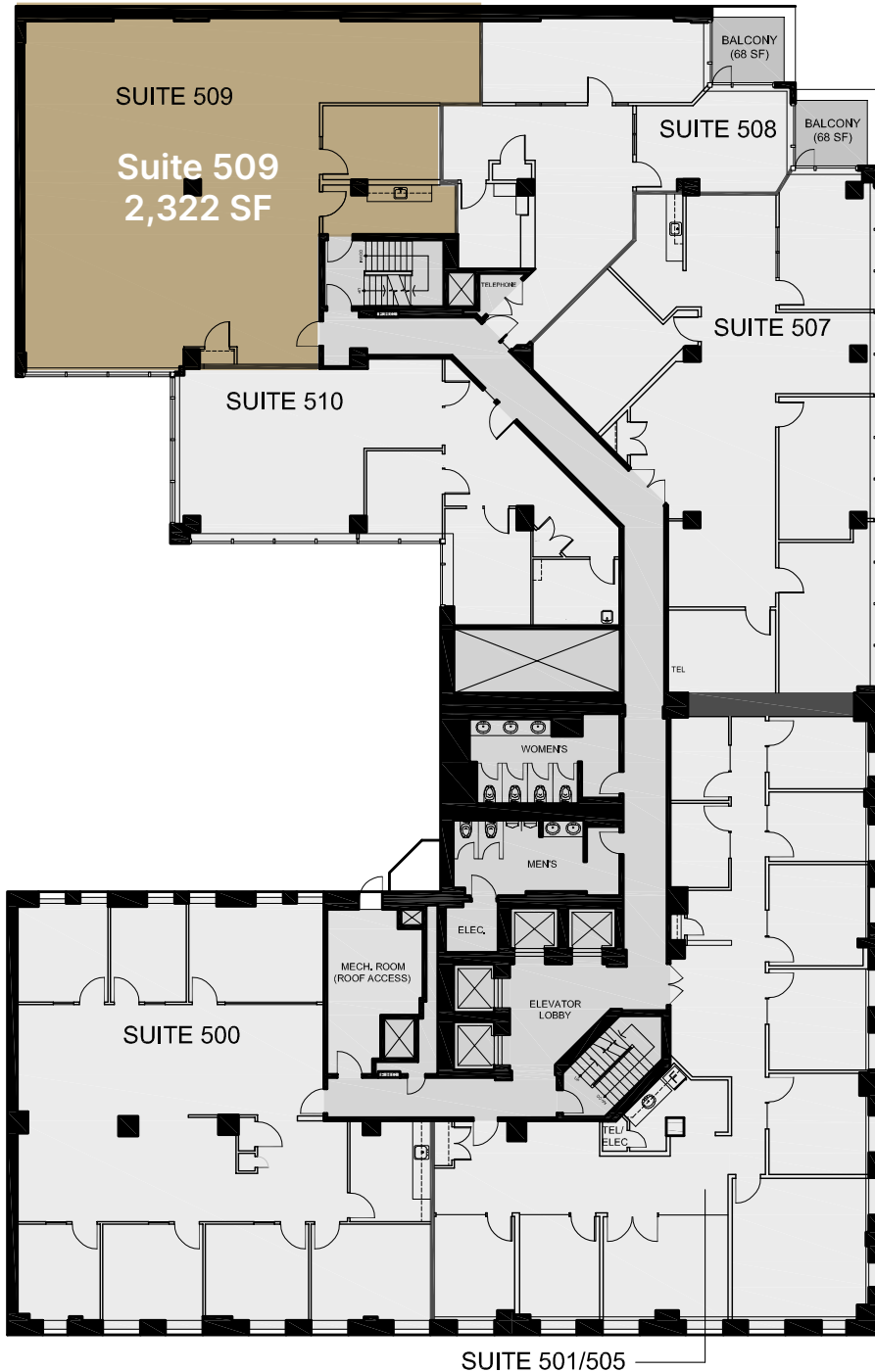
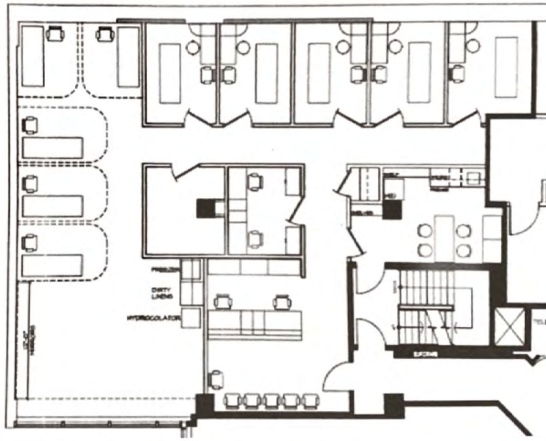
Suite 500 – 2,638 SF

Built out with reception area, 6 private offices, meeting room, open area for workstations and kitchenette.



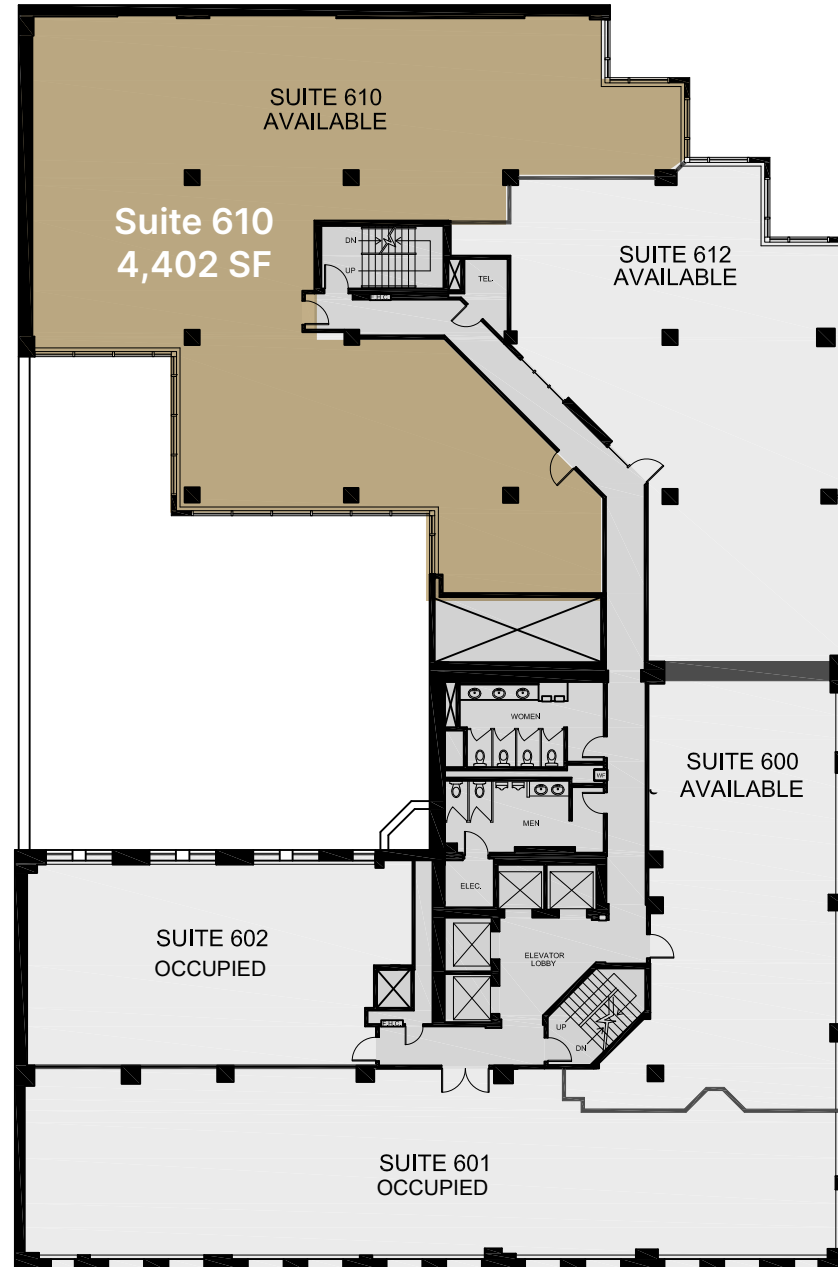
Suite 509 – 2,322 SF

Built out with 6 offices, reception, open area and kitchen.



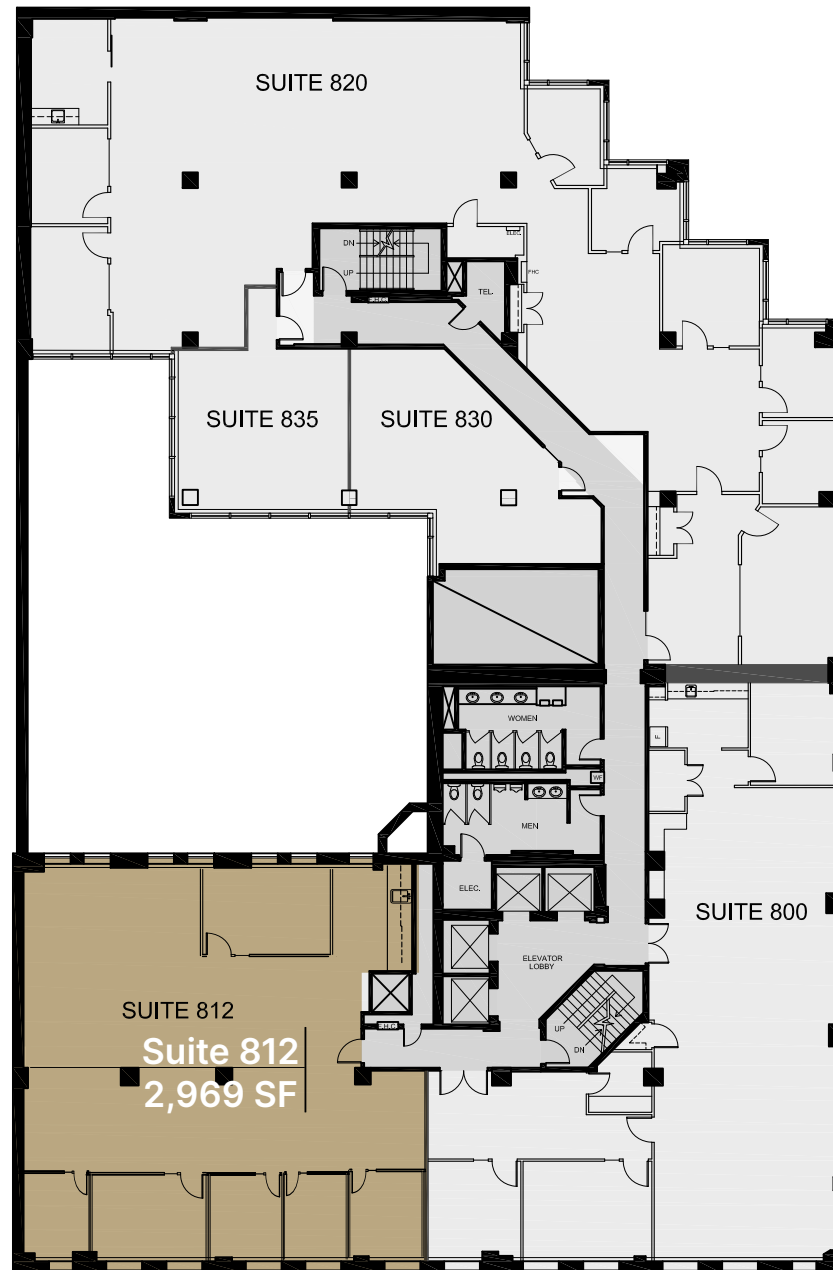
Suite 610 – 4,402 SF

Open space with open ceiling throughout, and concrete floors ready for finishing. Suite ready for fixturing, Landlord will turnkey.



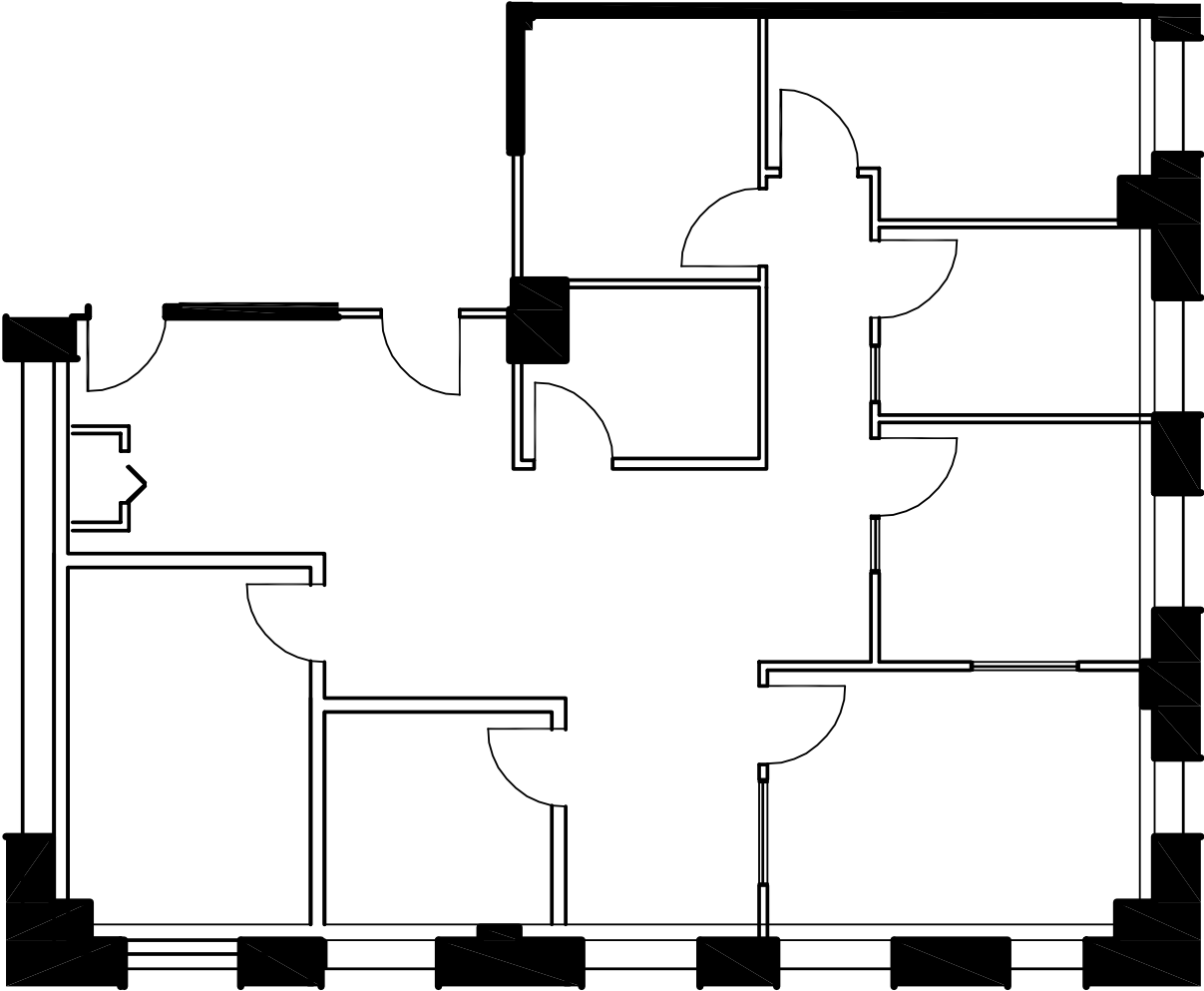
Suite 812 – 2,969 SF

Built out with 5 private offices, boardroom and large meeting room, kitchen, open area for workstations and reception area.



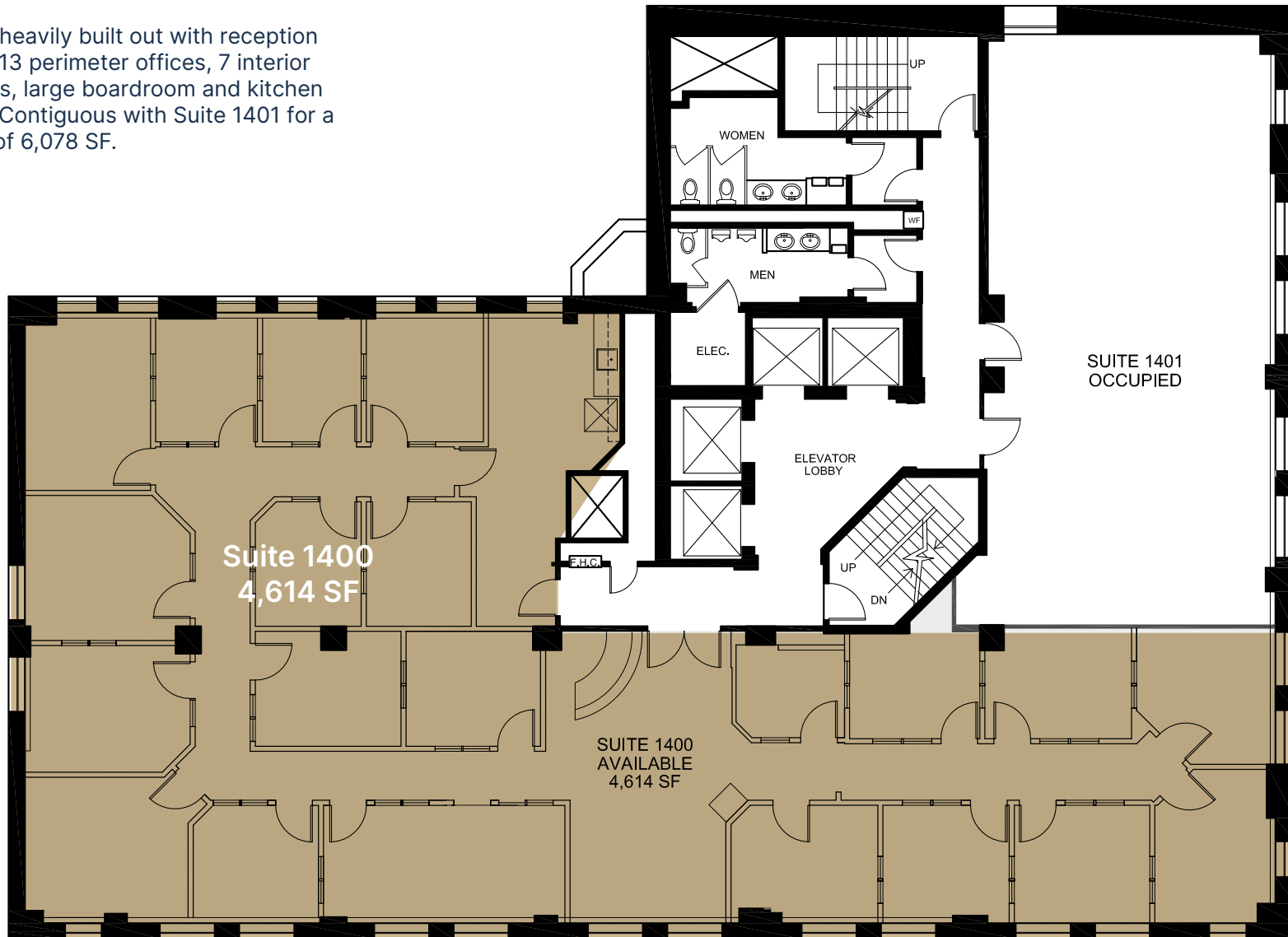
Suite 1304 - 1,651 SF

Suite built out with perimeter offices, boardroom, internal meeting room and open area



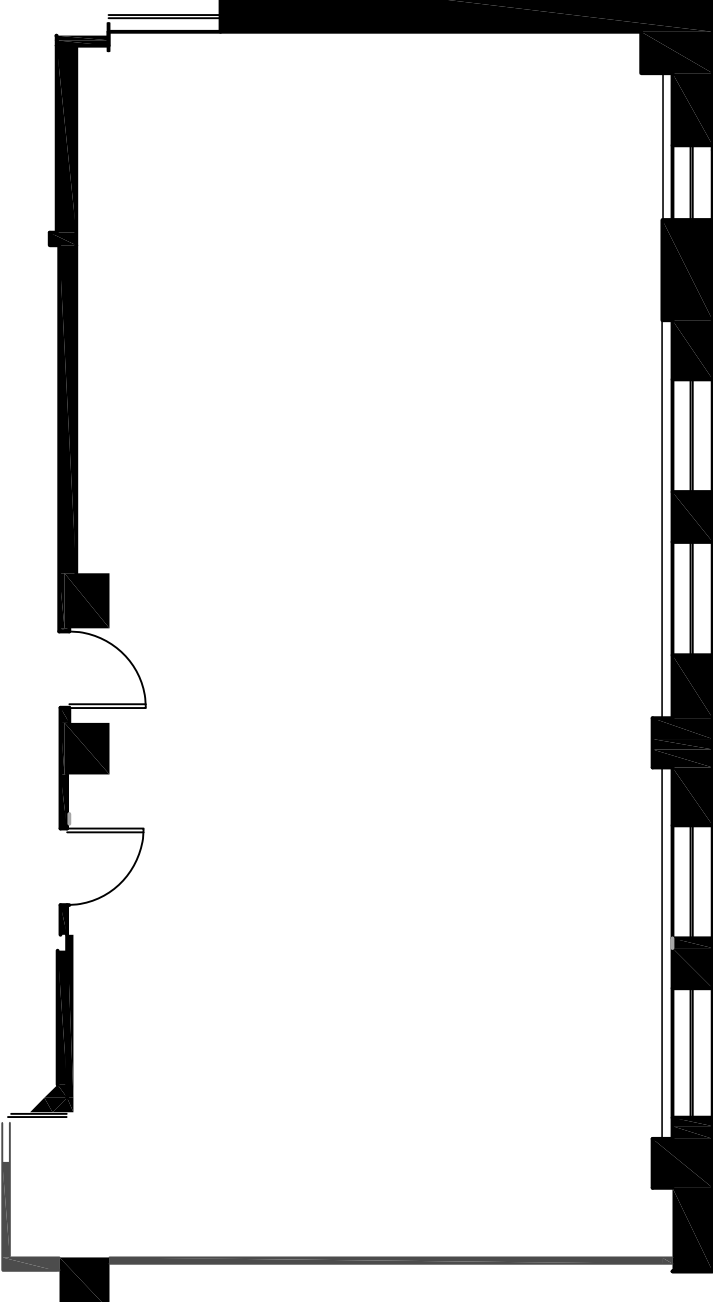
Suite 1400 – 4,614 SF

Suite heavily built out with reception area, 13 perimeter offices, 7 interior offices, large boardroom and kitchen area. Contiguous with Suite 1401 for a total of 6,078 SF.



Suite 1401 - 1,464 SF

Contiguous with Suite 1400
for a total of 6,078 SF.



Suite 1600 – 5,576 SF

Full floor existing data centre with existing racks & cabinets, raised floor, cages, duct work, electrical panels and systems in place for data centre user. Small office portion (open area) for data centre user.

