

For Lease

CBRE

THE
INDUSTRIAL
SPECIALISTS

1560 - 1592 Rand Avenue

Vancouver, BC

Rate Reduced!



Multi-Bay Warehouse with Dock Loading in
South Vancouver

The Opportunity

Industrial and Office Units For Lease

Located at 1560–1592 Rand Avenue in Vancouver, this property offers tenants flexible warehouse configurations with dock loading. Zoned for general industrial use, the building comprises eight multi-functional units designed to support a broad spectrum of business activities, from logistics and warehousing to showroom and office operations. With a well-balanced office-to-warehouse ratio, the property is ideal for businesses seeking both operational space and administrative functionality under one roof.

Strategically positioned at the southern edge of Vancouver’s Kerrisdale and Shaughnessy neighbourhoods, the property benefits from excellent proximity to key commercial districts and major transportation routes. Its location ensures seamless access to logistics corridors, making it an ideal base for businesses prioritizing connectivity, flexibility, and operational efficiency.

Property Features

- Ample parking onsite
- Two points of ingress and egress
- Flexible warehouse, office, and showroom unit combinations
- I-2 zoning allows for various industrial and commercial activities
- High ceilings allow for racking and storage
- New lighting throughout
- Professionally managed



LOADING
Dock level platform

CEILING HEIGHT
24’ clear

ZONING
I-2 (General Industrial)

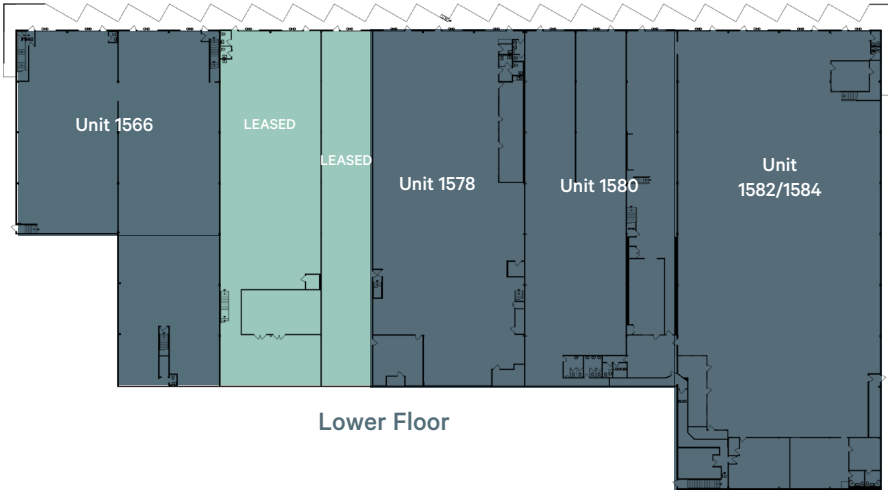
AVAILABILITY
Immediate

BASE RENT
~~\$18.00 PSF~~ \$15.00 PSF

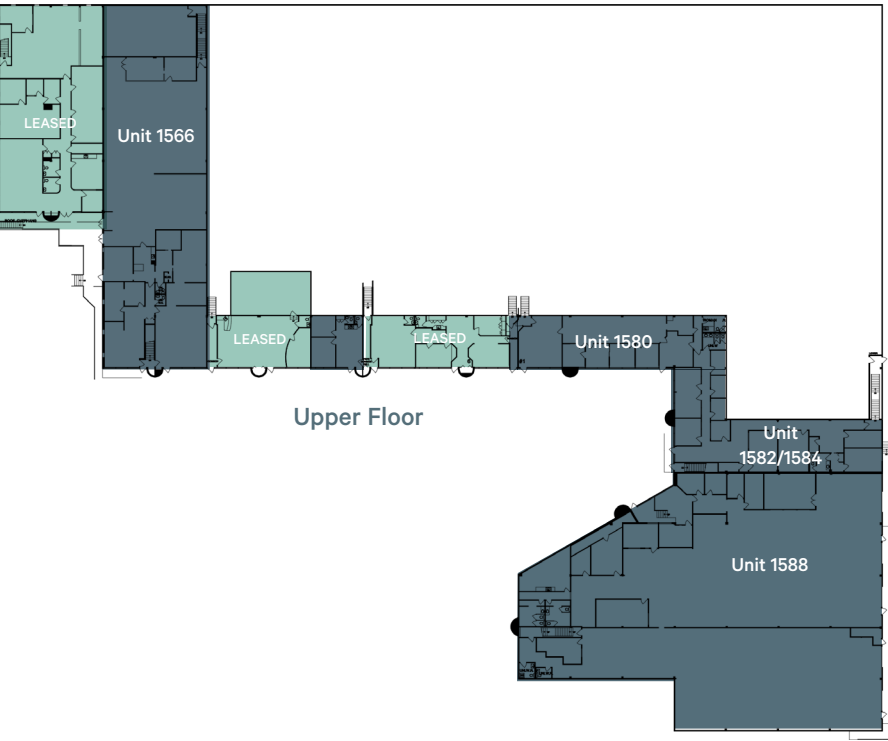
ADDITIONAL RENT
\$5.27 + 5% management fee

Building Floorplan

**Units not scale*



Lower Floor



Upper Floor

Unit	Warehouse (SF)	Office (SF)	Total (SF)
1562	LEASED		
1566	13,793 SF	8,922 SF	22,715 SF
1574	LEASED		
1578	13,297 SF	LEASED	15,024 SF
1580	8,685 SF	2,581 SF	11,266 SF
1582	4,434 SF	—	4,434 SF
1584	22,183 SF	3,639 SF	25,822 SF
1588	—	18,015 SF	18,015 SF

5

Minutes to
Arthur Liang Bridge

10

Minutes to
Highway 99

30

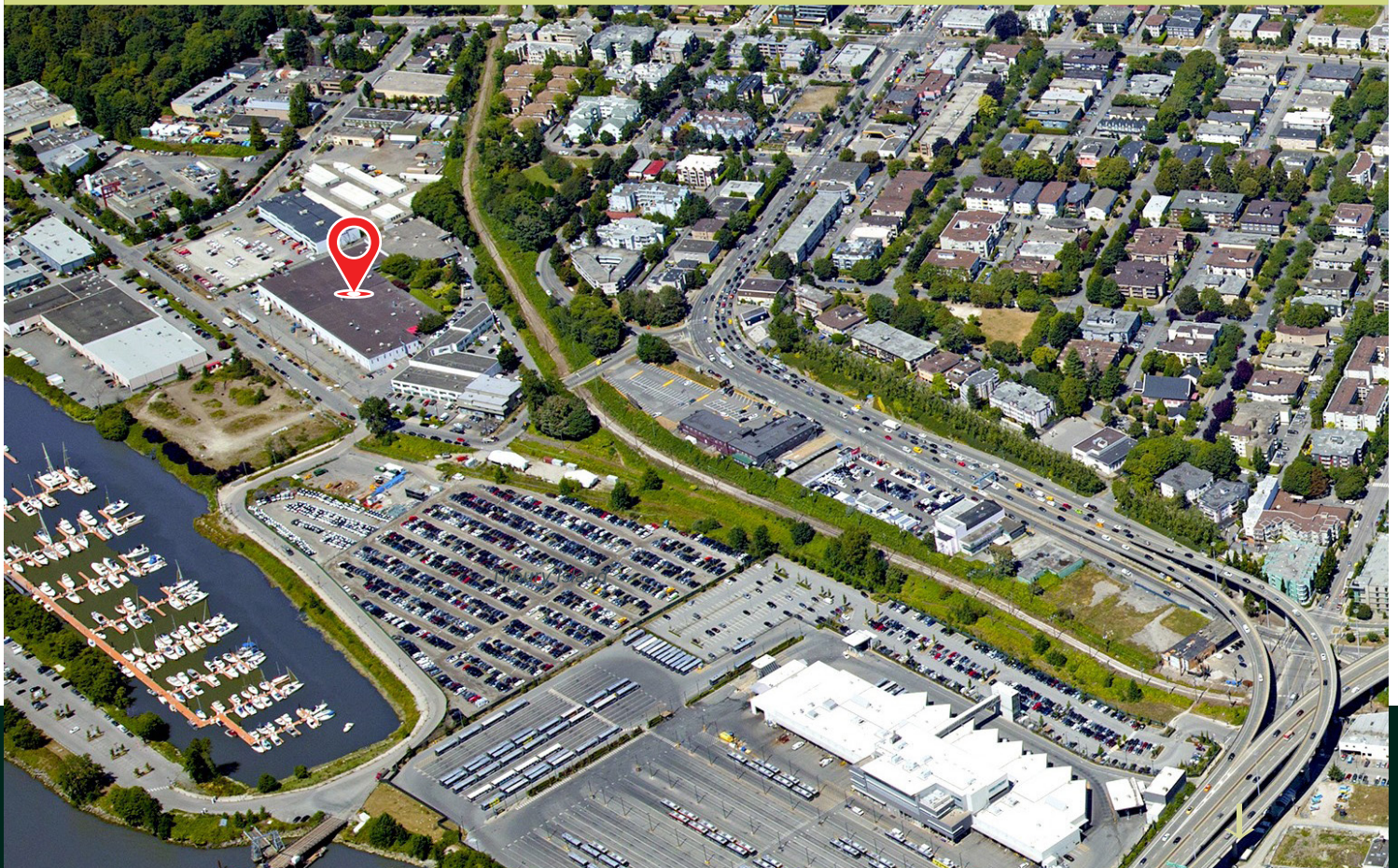
Minutes to
Vancouver
City Centre

5

Minutes to
YVR International Airport



Bus Routes
Near Property



Connect With Us For More Information

WAREHOUSE SPACE

STEVE BROOKE

PERSONAL REAL ESTATE CORPORATION

Executive Vice President
604 662 5147
steve.brooke@cbre.com

JOEL BARNETT

PERSONAL REAL ESTATE CORPORATION

Executive Vice President
604 961 9469
joel.barnett@cbre.com

LUC SOARES

Sales Associate
778 990 3569
luc.soares@cbre.com

OFFICE SPACE

MICHAEL WHITE

Vice President
778 788 3106
michael.rm.white@cbre.com

CBRE

**THE
INDUSTRIAL
SPECIALISTS**

CBRE Limited | 1021 West Hastings Street #2500, Vancouver, BC V6E 0C3 | cbre.ca

theindustrialspecialists.com

@theindustrialspecialists

This disclaimer shall apply to CBRE Limited, Real Estate Brokerage, and to all other divisions of the Corporation; to include all employees and independent contractors ("CBRE"). The information set out herein, including, without limitation, any projections, images, opinions, assumptions and estimates obtained from third parties (the "Information") has not been verified by CBRE, and CBRE does not represent, warrant or guarantee the accuracy, correctness and completeness of the Information. CBRE does not accept or assume any responsibility or liability, direct or consequential, for the Information or the recipient's reliance upon the Information. The recipient of the Information should take such steps as the recipient may deem necessary to verify the Information prior to placing any reliance upon the Information. The Information may change and any property described in the Information may be withdrawn from the market at any time without notice or obligation to the recipient from CBRE. CBRE and the CBRE logo are the service marks of CBRE Limited and/or its affiliated or related companies in other countries. All other marks displayed on this document are the property of their respective owners. All Rights Reserved. Mapping Sources: Canadian Mapping Services canadamapping@cbre.com; DMTI Spatial, Environics Analytics, Microsoft Bing, Google Earth. Images: Southgrainville.org