

Class A Office | For Lease

CBRE

Marketplace at Lake Boone

2235 Gateway Access Point
Raleigh, NC 27607

1,889 RSF & 13,569 RSF Available



Marketplace at Lake Boone

2235 Gateway Access Point

Raleigh, NC 27607



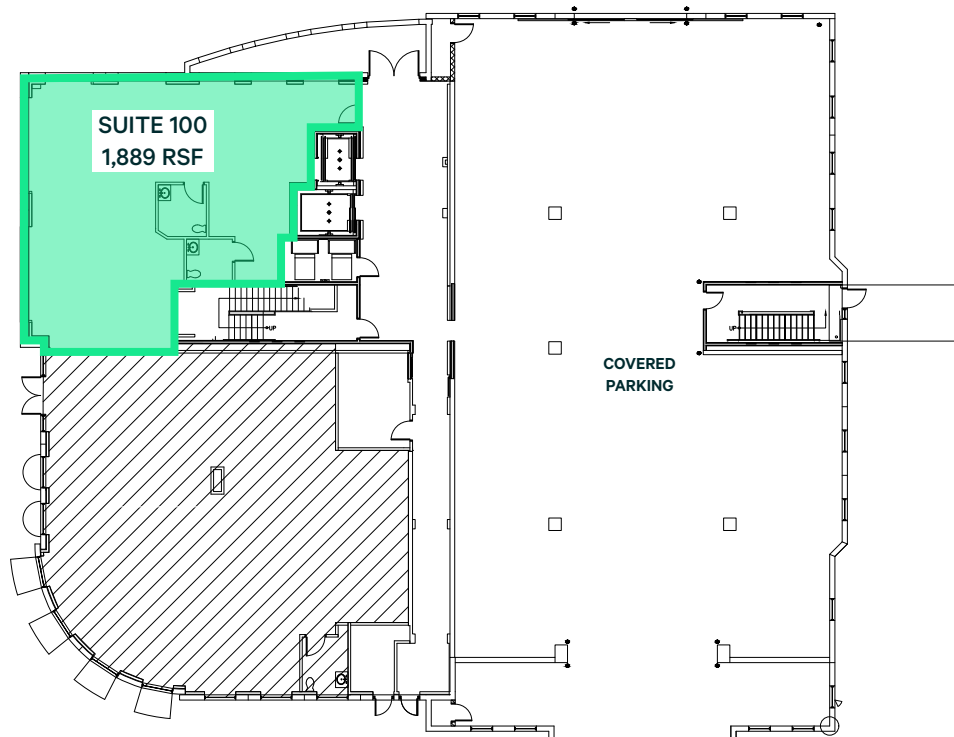
Rare Full Floor Available

In a Prime West Raleigh Location off Lake Boone Trail

- Four-story, 45,853 RSF Class A Office building located in the vibrant Marketplace at Lake Boone mixed-use community
- Owned and managed by Griffin Partners, Inc.
- Recent lobby renovations
- Irreplaceable location off Lake Boone Trail in West Raleigh with immediate access to I-440
- On-site retailers include: Buffalo Brothers, Two Roosters, Just Salad, Guasaca Arepa, The Oak, Vic's Italian, Bliss Body Yoga and Bottle Revolution
- Less than a half mile from UNC Rex Hospital Campus
- Surface parking and limited covered parking available

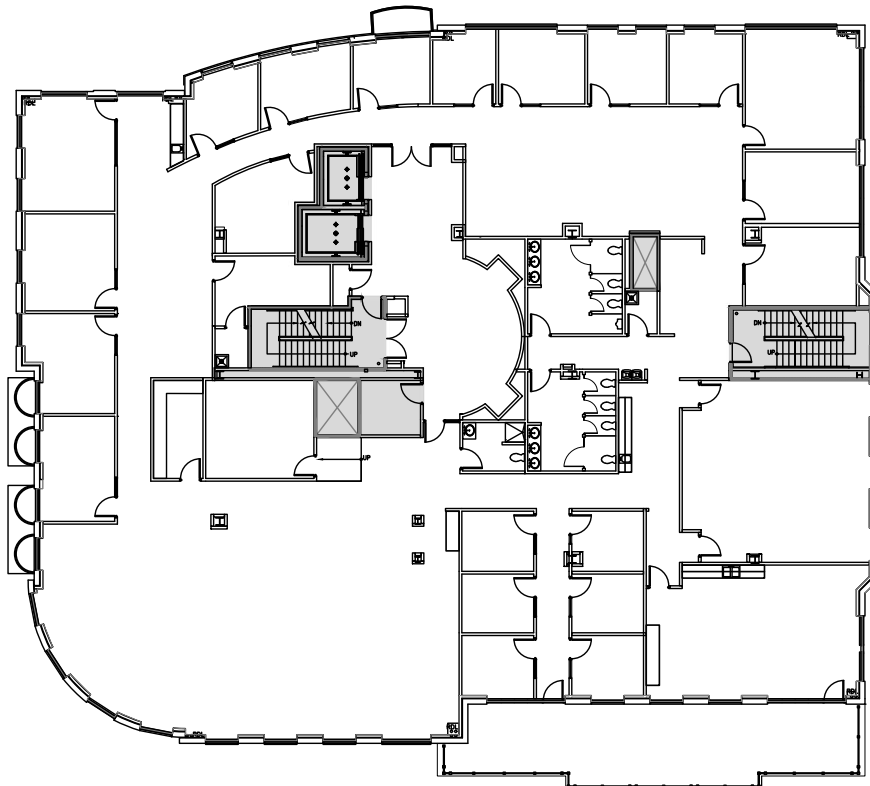
Class A Office For Lease

SUITE 100 | 1,889 RSF



SUITE 300 | 13,569 RSF

FULL FLOOR OPPORTUNITY • AVAILABLE NOW



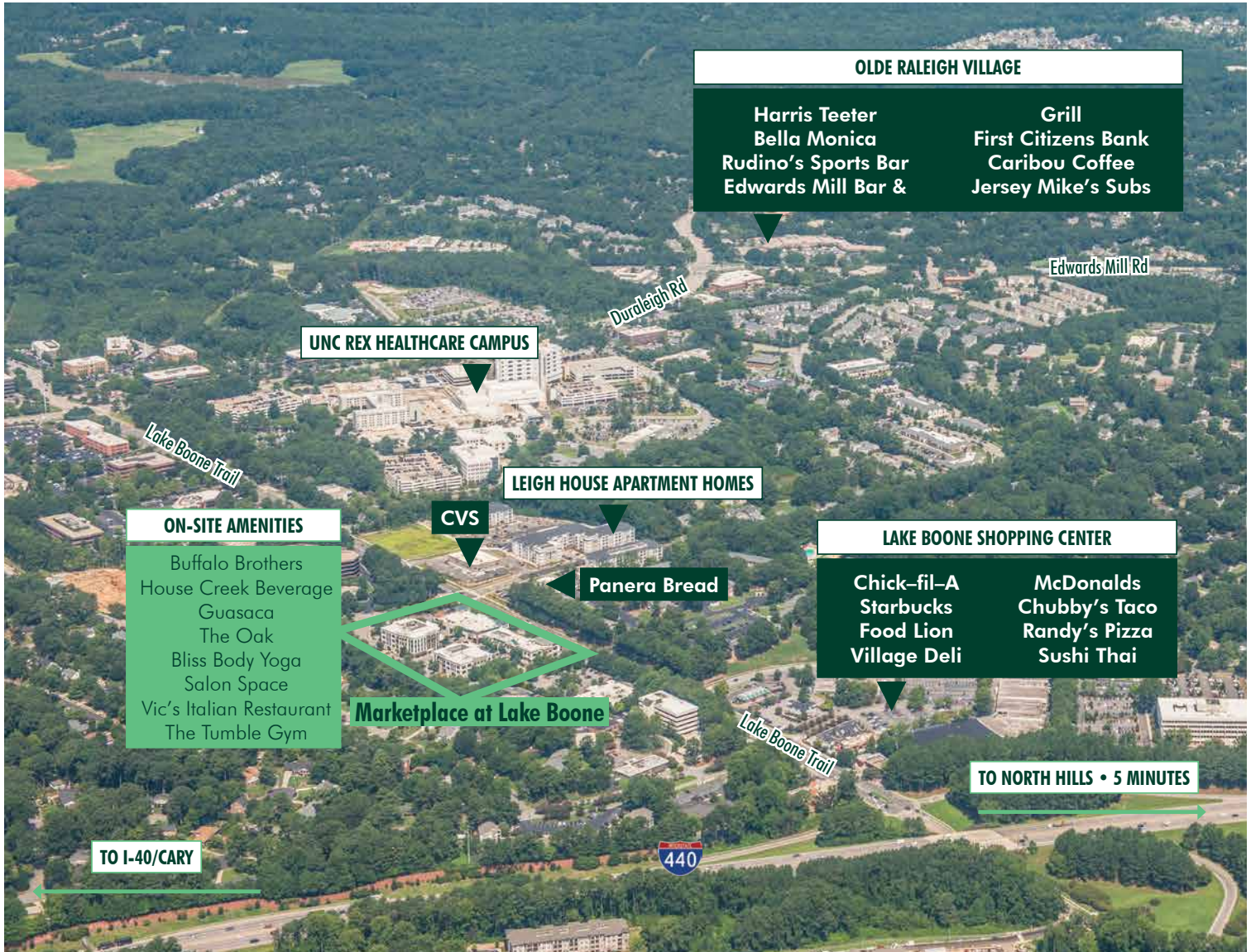
Marketplace at Lake Boone

2235 Gateway Access Point

Raleigh, NC 27607



Class A Office For Lease



Contact Us

Ed Pulliam

Executive Vice President
+1 919 831 8237
ed.pulliam@cbre.com

John Brewer

Executive Vice President
+1 919 831 8214
john.brewer@cbre.com



www.cbre.com/raleigh

© 2024 CBRE, Inc. All rights reserved. This information has been obtained from sources believed reliable but has not been verified for accuracy or completeness. CBRE, Inc. makes no guarantee, representation or warranty and accepts no responsibility or liability as to the accuracy, completeness, or reliability of the information contained herein. You should conduct a careful, independent investigation of the property and verify all information. Any reliance on this information is solely at your own risk. CBRE and the CBRE logo are service marks of CBRE, Inc. All other marks displayed on this document are the property of their respective owners, and the use of such marks does not imply any affiliation with or endorsement of CBRE.

CBRE