

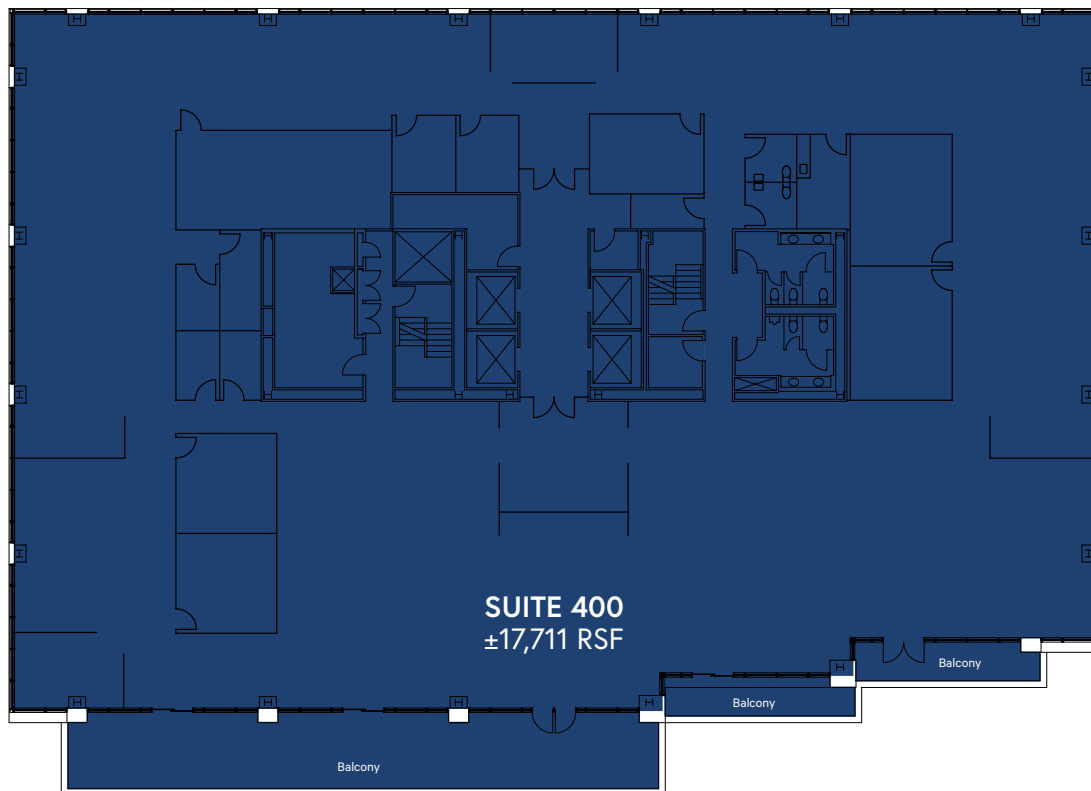
**Floor 4**  
Suite 400

**±17,711 RSF**



**MARKET PLACE  
TOWER**

SEATTLE



## Features:

» Full floor, move-in ready office space with three west-facing balconies.

## FOR MORE INFORMATION, CONTACT:

### SCOTTA ASHCRAFT

Senior Vice President  
+1 206 292 6063  
scotta.ashcraft@cbre.com

### NICK CARKONEN

Senior Vice President  
+1 206 292 6039  
nick.carkonen@cbre.com

### RILEY SHEPHARD

First Vice President  
+1 425 462 6932  
riley.shephard@cbre.com

**CBRE, Inc. | 1420 Fifth Avenue | Suite 3800 | Seattle, WA 98101**

© 2025 CBRE, Inc. All rights reserved. This information has been obtained from sources believed reliable, but has not been verified for accuracy or completeness. Any projections, opinions, or estimates are subject to uncertainty. The information may not represent the current or future performance of the property. You and your advisors should conduct a careful, independent investigation of the property and verify all information. Any reliance on this information is solely at your own risk. CBRE and the CBRE logo are service marks of CBRE, Inc. and/or its affiliated or related companies in the United States and other countries. All other marks displayed on this document are the property of their respective owners. Photos herein are the property of their respective owners and use of these images without the express written consent of the owner is prohibited. 05.28.25 BSO

**CBRE**