

Well Maintained Industrial Unit With Grade Loading in North Richmond

#130 - 1211 Valmont Way, Richmond, BC



Reduced Rate
\$14.50 PSF

Contact

Luc Soares

Sales Associate
Industrial Properties Group
luc.soares@cbre.com
778 990 3569

Alex Mei 梅嘉俊

Personal Real Estate Corporation
Vice President
Industrial Properties Group
alex.mei@cbre.com
778 788 3106

Joel Barnett

Personal Real Estate Corporation
Executive Vice President
Industrial Properties Group
joel.barnett@cbre.com
604 662 5570

Steve Brooke

Personal Real Estate Corporation
Executive Vice President
Industrial Properties Group
steve.brooke@cbre.com
604 662 5147



The Opportunity

CBRE Limited and the Industrial & Logistics Team are pleased to present the unique opportunity to lease 130 – 1211 Valmont Way, Richmond. This 2,146 sq. ft. industrial unit offers a functional blend of warehouse and office space across two levels, featuring an overhead loading door and efficient layout suitable for a wide range of users. With two office areas, onsite amenities, and strong market positioning in North Richmond's high-demand industrial node.

Property Details

Available Area

2,146 SF (on two levels)

Office 1,713 SF

Warehouse 443 SF

Net Rent

\$14.50 per SF

Op. Costs & Taxes

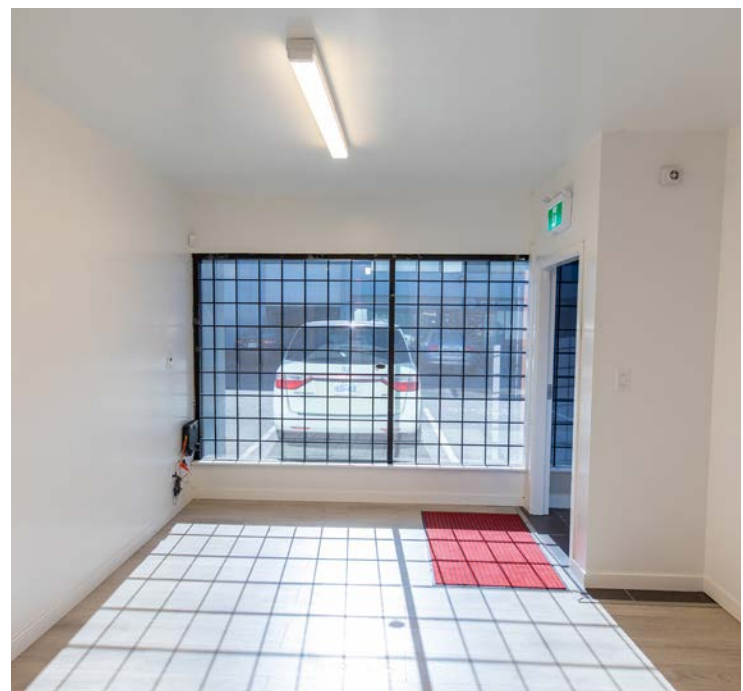
\$7.63 (2026 est.)

IL (Light Impact Industrial)

Allowing for a wide range of industrial uses with minimal environmental impact.

Available

Immediately



Industrial | For Lease

#130 - 1211 Valmont Way, Richmond, BC

Property Features

Ceiling Height

Warehouse 16'
Office 8'

Grade Loading

One (1) overhead grade-level loading door

Electrical

Three-phase power

Amenities

Upper-level kitchen,
Washroom w/shower,
laundry hookup and A/C

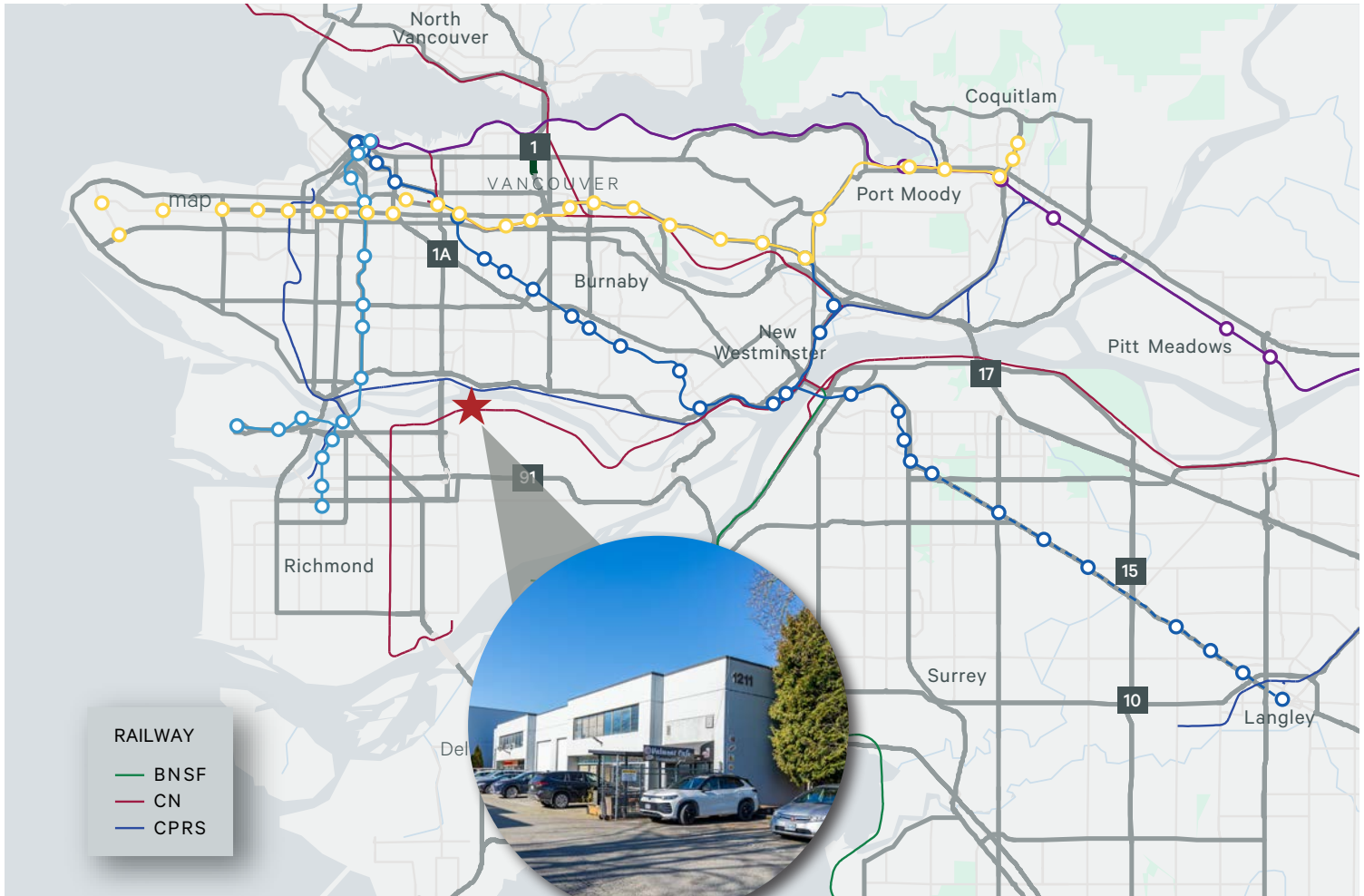


Industrial | For Lease

#130 - 1211 Valmont Way, Richmond, BC

CBRE

Located in the heart of Richmond's sought-after Valmont Way industrial pocket, the property offers immediate access to major transportation routes, including Bridgeport Road, Knight Street, and Highway 99. Surrounded by a strong mix of service industrial, logistics, and trade-focused businesses, this area remains one of Richmond's most desirable small-bay strata locations.



Contact

Luc Soares

Sales Associate
Industrial Properties Group
luc.soares@cbre.com
778 990 3569

Alex Mei 梅嘉俊

Personal Real Estate Corporation
Vice President
Industrial Properties Group
alex.mei@cbre.com
778 788 3106

Joel Barnett

Personal Real Estate Corporation
Executive Vice President
Industrial Properties Group
joel.barnett@cbre.com
604 662 5570

Steve Brooke

Personal Real Estate Corporation
Executive Vice President
Industrial Properties Group
steve.brooke@cbre.com
604 662 5147

This disclaimer shall apply to CBRE Limited, Real Estate Brokerage, and to all other divisions of the Corporation, to include all employees and independent contractors ("CBRE"). The information set out herein, including, without limitation, any projections, images, opinions, assumptions and estimates obtained from third parties (the "Information") has not been verified by CBRE, and CBRE does not represent, warrant or guarantee the accuracy, correctness and completeness of the Information. CBRE does not accept or assume any responsibility or liability, direct or consequential, for the Information or the recipient's reliance upon the Information. The recipient of the Information should take such steps as the recipient may deem necessary to verify the Information prior to placing any reliance upon the Information. The Information may change and any property described in the Information may be withdrawn from the market at any time without notice or obligation to the recipient from CBRE. CBRE and the CBRE logo are the service marks of CBRE Limited and/or its affiliated or related companies in other countries. All other marks displayed on this document are the property of their respective owners. All Rights Reserved. Mapping Sources: Canadian Mapping Services canadamapping@cbre.com; DMTI Spatial, Environics Analytics, Microsoft Bing, Google Earth.