

FOR SALE

Unit 2110

11980 Hammersmith Way

RICHMOND, BC



Prime Strata Warehouse Unit With Finished Office Space
Featuring Dock & Grade Loading in South Richmond

CBRE

THE
INDUSTRIAL
SPECIALISTS

Unit Features

- Front parking with rear loading providing maximum efficiency
- Can accommodate 40 ft. containers
- Air conditioned second level offices
- 6 private parking stalls & a designated loading area in the rear of the unit
- 3-phase power
- Improved offices
- One washroom per floor



FOR SALE

Unit 2110

4,397 SF



Unit Details

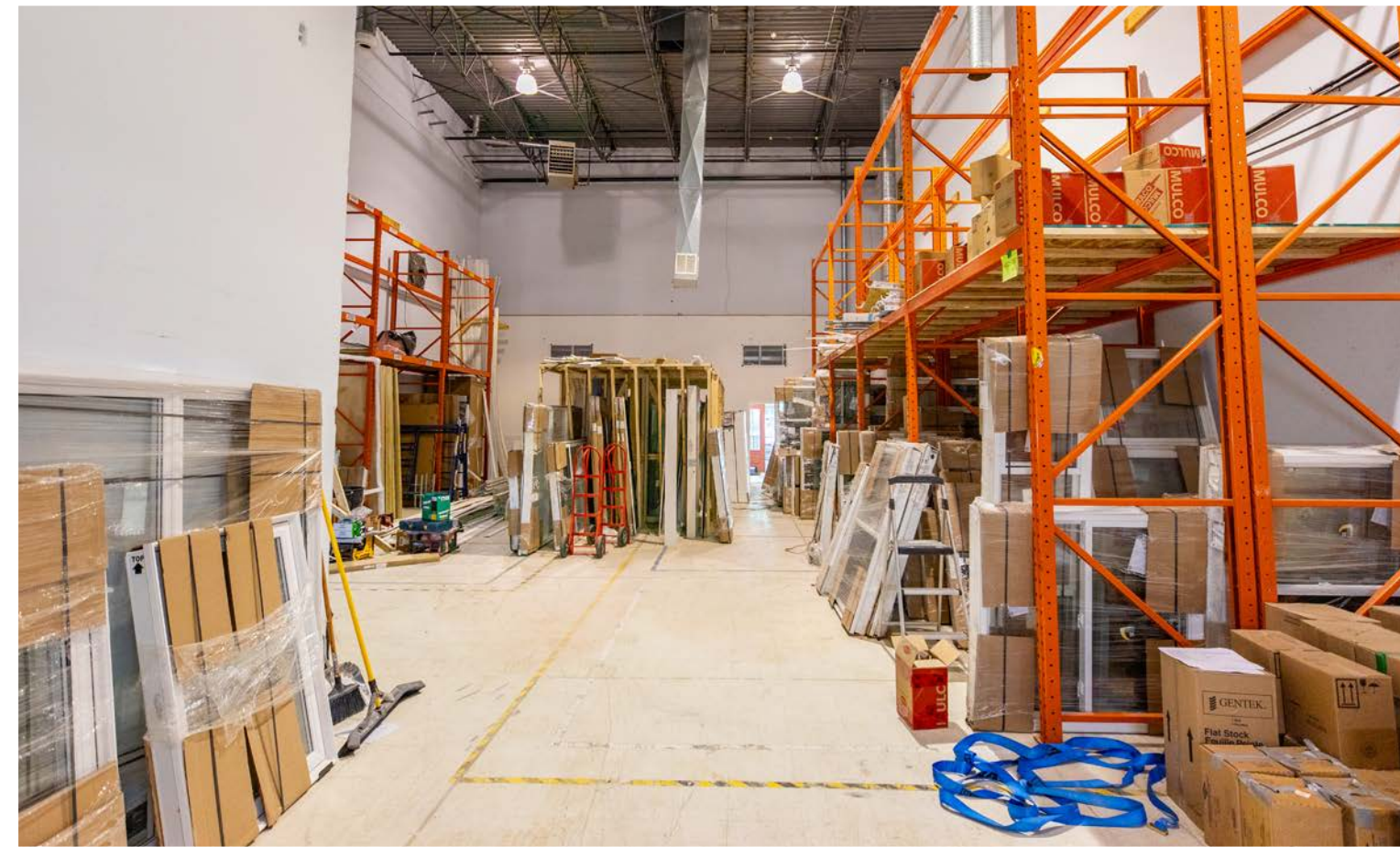
UNIT SIZE	Ground Floor	3,145 SF
	Upper Floor	1,252 SF
	Total Area	4,397 SF

CEILING HEIGHT 26' clear (main floor)

LOADING DOORS 1 dock & 1 grade door

AVAILABILITY August 1, 2026 with a preferred closing date of January 2027. Contact agents for more information

ASKING PRICE \$2,308,452 (525 PSF)





UNIT 2110
11980 HAMMERSMITH WAY

Hammersmith Way

Location Overview

The Property is located on Hammersmith Way in the prime Riverside Industrial Park area in South Richmond. The neighbourhood is home to numerous international headquarters and features a wide array of dining options, business services, daycares, parks and recreational amenities. The Property is strategically situated minutes away from the intersection of Steveston Highway and Highway 99 to Vancouver and the U.S. border crossing offering efficient travel to Metro Vancouver and YVR International Airport.

CONNECT WITH US FOR MORE INFORMATION

JOEL BARNETT

PERSONAL REAL ESTATE CORPORATION

Executive Vice President

604 662 5570

joel.barnett@cbre.com

STEVE BROOKE

PERSONAL REAL ESTATE CORPORATION

Executive Vice President

604 662 5147

steve.brooke@cbre.com

ALEX MEI 梅嘉俊

PERSONAL REAL ESTATE CORPORATION

Vice President

778 788 3106

alex.mei@cbre.com

LUC SOARES

Sales Associate

778 372 1938

luc.soares@cbre.com

CBRE

**THE
INDUSTRIAL
SPECIALISTS**

CBRE Limited | 1021 West Hastings Street #2500, Vancouver, BC V6E 0C3 | cbre.ca

theindustrialspecialists.com

[@theindustrialspecialists](https://www.instagram.com/theindustrialspecialists)

This disclaimer shall apply to CBRE Limited, Real Estate Brokerage, and to all other divisions of the Corporation; to include all employees and independent contractors ("CBRE"). The information set out herein, including, without limitation, any projections, images, opinions, assumptions and estimates obtained from third parties (the "Information") has not been verified by CBRE, and CBRE does not represent, warrant or guarantee the accuracy, correctness and completeness of the Information. CBRE does not accept or assume any responsibility or liability, direct or consequential, for the Information or the recipient's reliance upon the Information. The recipient of the Information should take such steps as the recipient may deem necessary to verify the Information prior to placing any reliance upon the Information. The Information may change and any property described in the Information may be withdrawn from the market at any time without notice or obligation to the recipient from CBRE. CBRE and the CBRE logo are the service marks of CBRE Limited and/or its affiliated or related companies in other countries. All other marks displayed on this document are the property of their respective owners. All Rights Reserved. Mapping Sources: Canadian Mapping Services canadamapping@cbre.com; DMTI Spatial, Environics Analytics, Microsoft Bing, Google Earth. Images: Southgranville.org