

NOW LEASING

215 S 15TH ST

BETWEEN WALNUT & LOCUST

MULTI FLOOR RESTAURANT SPACE IN
RITTENHOUSE SQUARE | PHILADELPHIA, PA



CBRE

NOW LEASING

215 S 15TH STREET

RITTENHOUSE SQUARE | PHILADELPHIA, PA

RETAIL SPACE

- +/- 5,000 SF ground floor
- +/- 3,900 SF second floor

PROPERTY FEATURES

- Fully fit-out restaurant space with kitchen facilities on multiple floors
- Close proximity to Philadelphia's high-end shopping and dense residential core

NEIGHBORING TENANTS



T HOTEL

NOW LEASING

215 S 15TH STREET

RITTENHOUSE SQUARE | PHILADELPHIA, PA

GREATER CENTER CITY DEMOGRAPHICS

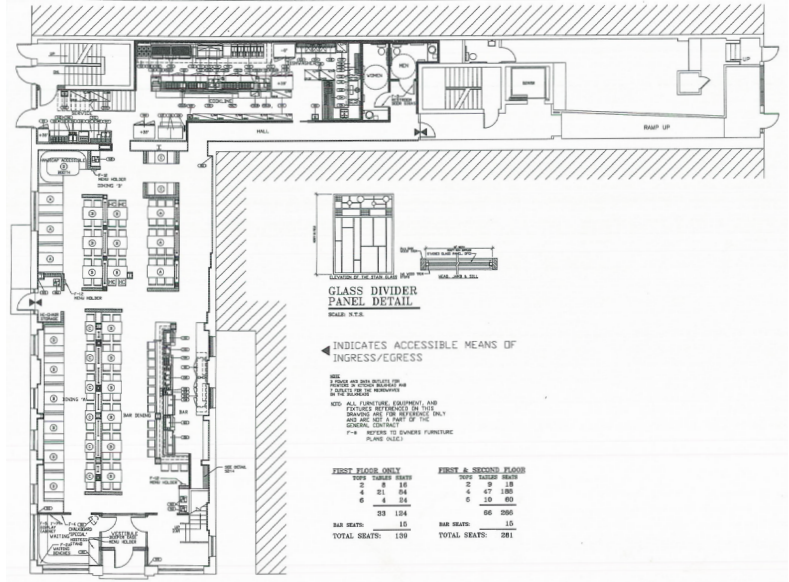
184,998
Population

\$111,000
Avg HH Income

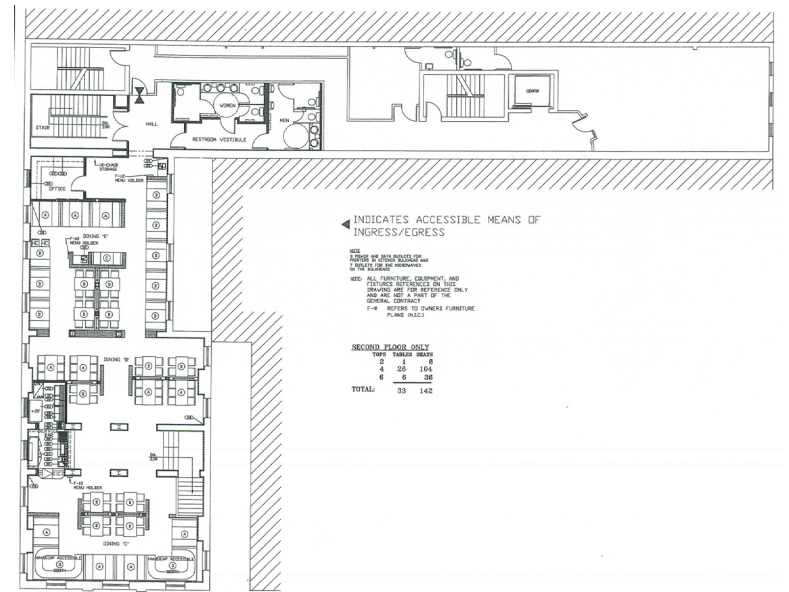
286,427
Total Employees

33
Median Age

Source: Center City District



FIRST FLOOR



SECOND FLOOR

CONTACT US

Steven Gartner

Managing Director
+1 215 557 0050
steven.gartner@cbre.com
Licensed: PA, DE, MD, NY
Licensed Salesperson: NJ

Larry Steinberg

Executive Vice President
+1 215 557 0050
larry.steinberg@cbre.com
Licensed: PA

Paige Jaffe

First Vice President
+1 215 557 0050
paige.jaffe@cbre.com
Licensed: PA

CBRE, Inc.

50 S 16th Street, Suite 3000
Philadelphia, PA 19102
T +1 215 557 0050
F +1 215 557 0053
Licensed Real Estate Broker

© 2017 CBRE, Inc. This information has been obtained from sources believed reliable. We have not verified it and make no guarantee, warranty or representation about it. Any projections, opinions, assumptions or estimates used are for example only and do not represent the current or future performance of the property. You and your advisors should conduct a careful, independent investigation of the property to determine to your satisfaction the suitability of the property for your needs. Photos herein are the property of their respective owners and use of these images without the express written consent of the owner is prohibited. CBRE and the CBRE logo are service marks of CBRE, Inc. and/or its affiliated or related companies in the United States and other countries. All other marks displayed on this document are the property of their respective owners.