

A photograph of a modern office building with a large arched glass entrance. The building is surrounded by lush green trees and a well-manicured hedge in the foreground. A paved walkway leads to the entrance. The image is overlaid with a red diagonal graphic element on the right side.

1100 Crescent Green

Cary, North Carolina

Available suites ranging from
1,952 SF to 24,654 SF

CBRE

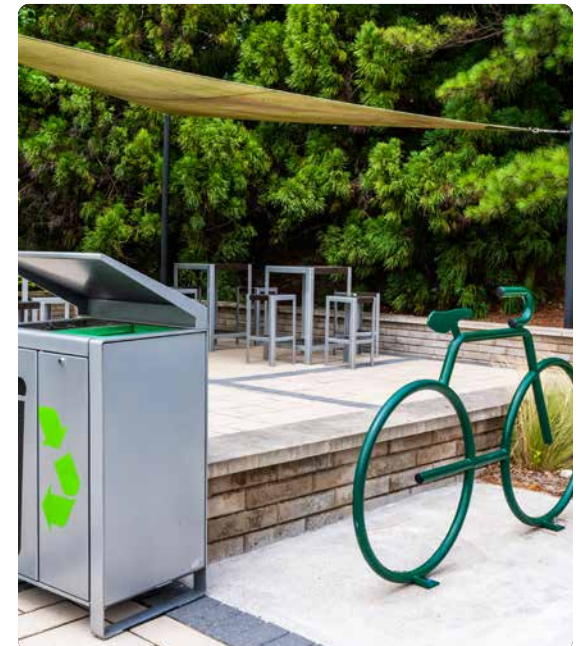
Property Overview



1100 Crescent Green is a two-story 94,304 SF full building available for lease.

A variety of suites are available ranging from 1,952 SF to 24,654 SF.

- Beautiful office park setting with outdoor patio
- Showers on-site
- Competitive TI packages
- Ability to provide up to 4/1000 for surface and covered parking
- Nearby amenities include hotels, shopping, banking, restaurants and walking/biking trails
- Convenient Cary location with easy access to I-40, I-440 and the US 1 & US 64 interchange



A circular graphic with a light blue background and a white border. The words "FLOOR PLANS" are repeated in a circular arrangement around the perimeter of the circle, following its curve. The text is in a bold, sans-serif font.

The floor plan shows a large, irregularly shaped building layout. Suite 115 is a large, central area with a complex internal structure, including a large open space and several smaller rooms. Suite 107* is a large, rectangular area located to the right of Suite 115. Suite 105 is a large, rectangular area located to the left of Suite 115. The plan also shows various corridors, stairwells, and service areas. Labels with leader lines point to Suite 115 (11,570 SF), Suite 107* (7,658 SF), and Suite 105 (9,610 SF).

Suite 115
11,570 SF

Suite 107*
7,658 SF

Suite 105
9,610 SF

Contiguous Space
*Suites 105 and 107 combined for 9,610 SF

The floor plan shows a large, irregularly shaped building layout. Suite 115 is a large, central area with a complex internal structure, including a large open space and several smaller rooms. Suite 107* is a large, rectangular area located to the right of Suite 115. Suite 105 is a large, rectangular area located to the left of Suite 115. The plan also shows various corridors, stairwells, and service areas. Labels with leader lines point to Suite 115 (11,570 SF), Suite 107* (7,658 SF), and Suite 105 (9,610 SF).

Suite 115
11,570 SF

Suite 107*
7,658 SF

Suite 105
9,610 SF

Contiguous Space
*Suites 105 and 107 combined for 9,610 SF

The floor plan shows a large, irregularly shaped building layout. Suite 115 is a large, central area with a complex internal structure, including a large open space and several smaller rooms. Suite 107* is a large, rectangular area located to the right of Suite 115. Suite 105 is a large, rectangular area located to the left of Suite 115. The plan also shows various corridors, stairwells, and service areas. Labels with leader lines point to Suite 115 (11,570 SF), Suite 107* (7,658 SF), and Suite 105 (9,610 SF).

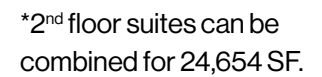
Suite 115
11,570 SF

Suite 107*
7,658 SF

Suite 105
9,610 SF

Contiguous Space
*Suites 105 and 107 combined for 9,610 SF

*Suites 105 and 107 can be combined for 9,610 SF.



Aerial

RDU AIRPORT
15 minute drive

Prime Cary Location with Walkable Amenities

DISTANCE TO MAJOR HIGHWAYS

US 64/US 1	1 Mile
I-40	4 Miles
I-440	4 Miles
I-540	6 Miles



LUCKY 32
SOUTHERN KITCHEN



CRESCENT COMMONS
265K SF Retail Center

Crescent Green
Parking Deck

1300
Crescent
Green

1200 Crescent
Green

**1100
CRESCENT GREEN**



WAVERLY PLACE
200K SF Retail Center



1100 Crescent Green

CONTACTS

John Brewer

Executive Vice President

+1 919 831 8214

john.brewer@cbre.com

Hastings Jones

Vice President

+1 919 831 8219

hastings.jones@cbre.com

CBRE

© 2025 CBRE, Inc. All rights reserved. This information has been obtained from sources believed reliable but has not been verified for accuracy or completeness. CBRE, Inc. makes no guarantee, representation or warranty and accepts no responsibility or liability as to the accuracy, completeness, or reliability of the information contained herein. You should conduct a careful, independent investigation of the property and verify all information. Any reliance on this information is solely at your own risk. CBRE and the CBRE logo are service marks of CBRE, Inc. All other marks displayed on this document are the property of their respective owners, and the use of such marks does not imply any affiliation with or endorsement of CBRE. Photos herein are the property of their respective owners. Use of these images without the express written consent of the owner is prohibited.