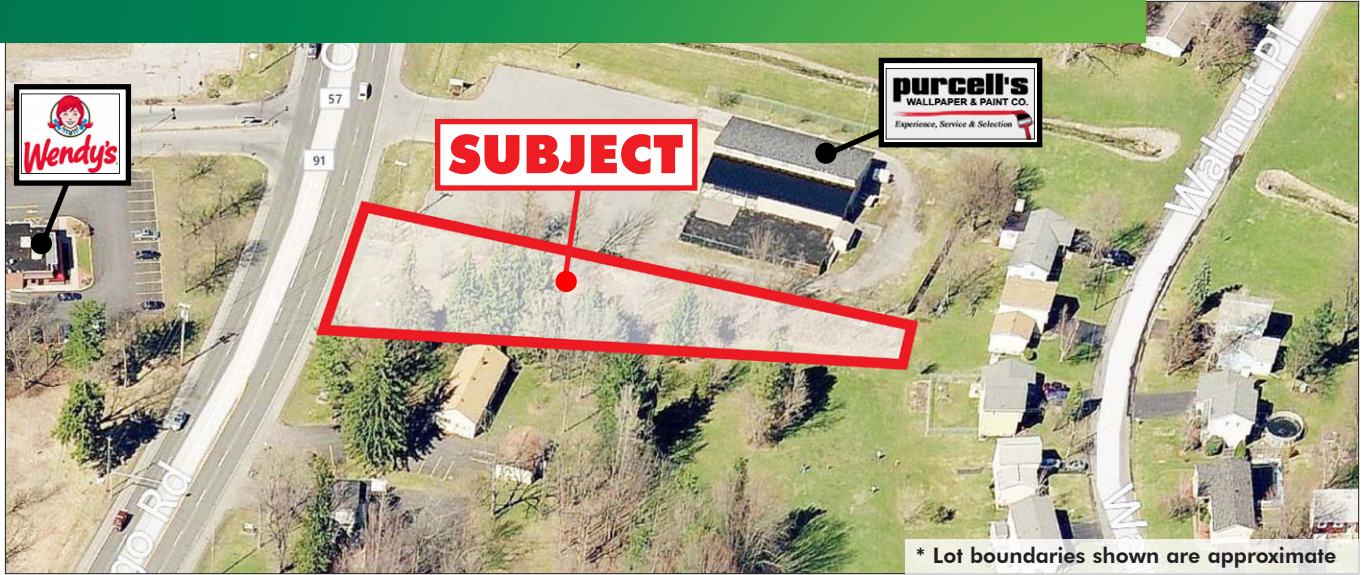


FOR SALE

DEVELOPMENT SITE

7928 OSWEGO ROAD (ROUTE 57)
LIVERPOOL, NY 13090



PROPERTY FEATURES

- + Ideal for retail, medical, office
- + 0.8± acres, 100' x 355'
- + 100' of prime road frontage along high-traffic thoroughfare
- + Zoned Neighborhood Commercial (NC-1)
- + All services present, including public water, sewer, gas and electric
- + Across from busy Shoppes at Seneca Mall retail center entrance and Wendy's Restaurant; next door to Purcell's Paints
- + Well-established, densely populated suburban location with excellent demographics

2015 Demographics	1 mi.	3 mi.	5 mi.
Population	8,523	40,477	100,003
Households	3,329	16,444	41,614
Avg. Household Income	\$72,314	\$70,969	\$65,747

Source: Nielsen



CONTACT EXCLUSIVE AGENT

BILL ANNINOS
Senior Broker
+1 315 422 4200
bill.anninos@cbre-syr.com

CBRE | SYRACUSE
Nettleton Commons
313 E. Willow St., Ste. 202
Syracuse, NY 13203

Traffic Count	
Oswego Road (Route 57)	29,167±

Source: NYS DOT 2013 AADT

© 2017 CB Richard Ellis/Syracuse, N.Y., LLC. This information has been obtained from sources believed reliable. We have not verified it and make no guarantee, warranty or representation about it. Any projections, opinions, assumptions or estimates used are for example only and do not represent the current or future performance of the property. You and your advisors should conduct a careful, independent investigation of the property to determine to your satisfaction the suitability of the property for your needs. Photos herein are the property of their respective owners and use of these images without the express written consent of the owner is prohibited.

www.cbre.com/syracuse

CBRE | Syracuse

Part of the CBRE affiliate network