

FOR LEASE

# OFFICE SPACE

7000 PERFORMANCE DRIVE  
NORTH SYRACUSE, NY 13212



## PROPERTY FEATURES

- + 6,500 sq. ft. open plan second floor office space
- + 1,850 sq. ft. additional storage space available
- + Access to common cafeteria
- + Access to common first floor reception/waiting room
- + Ample parking
- + Conveniently located in the Hancock Airpark
- + Easy access to I-481 & I-81



## CONTACT EXCLUSIVE AGENT

### MARK RUPPRECHT, CCIM

Senior Broker

+1 315 422 4200

mark.rupprecht@cbre-syr.com

### CBRE | SYRACUSE

Nettleton Commons

313 E. Willow St., Ste. 202

Syracuse, NY 13203

© 2018 CB Richard Ellis/Syracuse, N.Y., LLC. All rights reserved. This information has been obtained from sources believed reliable, but has not been verified for accuracy or completeness. You should conduct a careful, independent investigation of the property and verify all information. Any reliance on this information is solely at your own risk. Photos herein are the property of their respective owners. Use of these images without the express written consent of the owner is prohibited.

[www.cbre.com/syracuse](http://www.cbre.com/syracuse)

**CBRE** | Syracuse

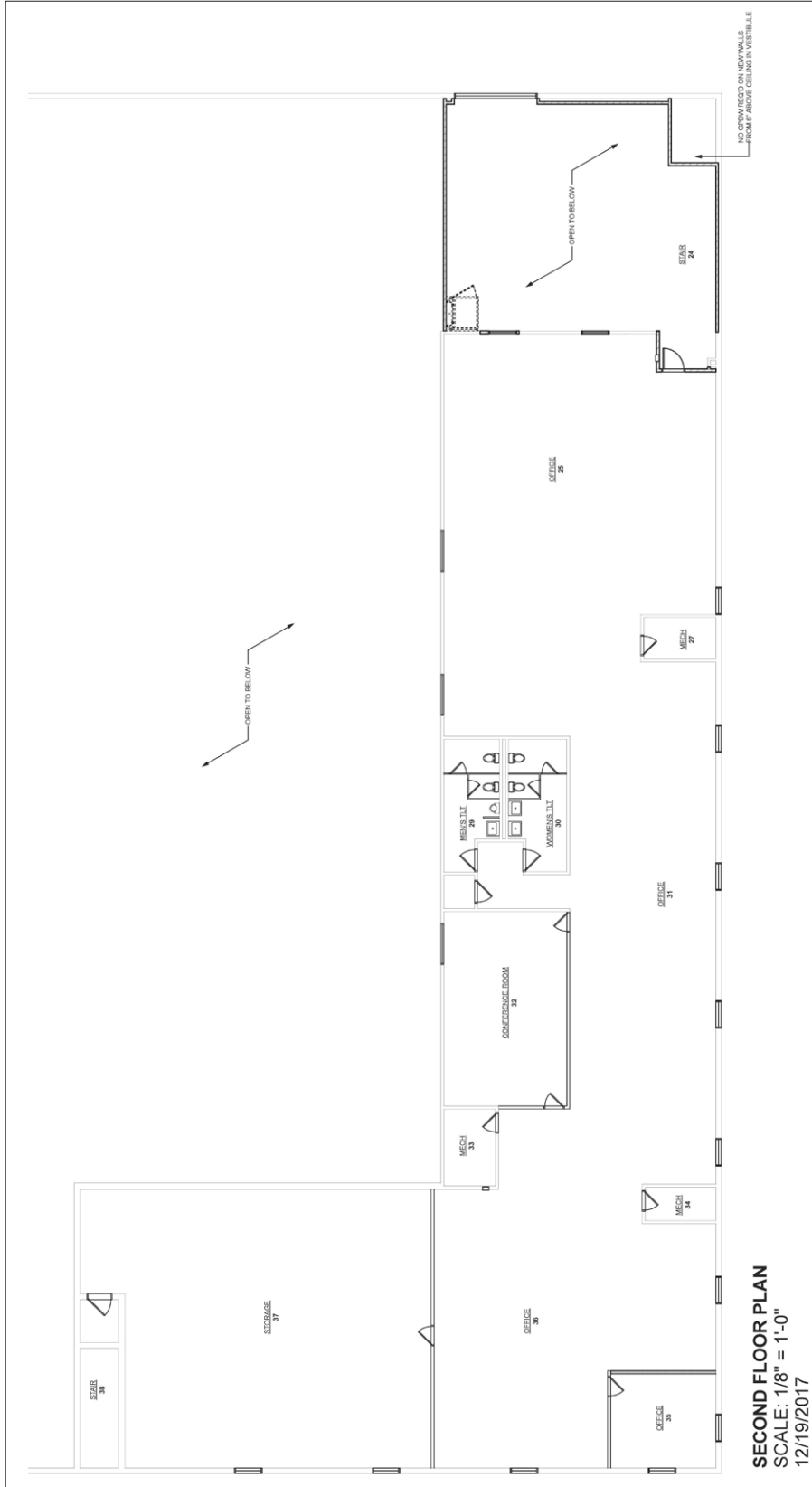
Part of the CBRE affiliate network

# FOR LEASE OFFICE SPACE

7000 PERFORMANCE DRIVE  
NORTH SYRACUSE, NY 13212



## FLOOR PLAN



**SECOND FLOOR PLAN**  
SCALE: 1/8" = 1'-0"  
12/19/2017