

FOR LEASE

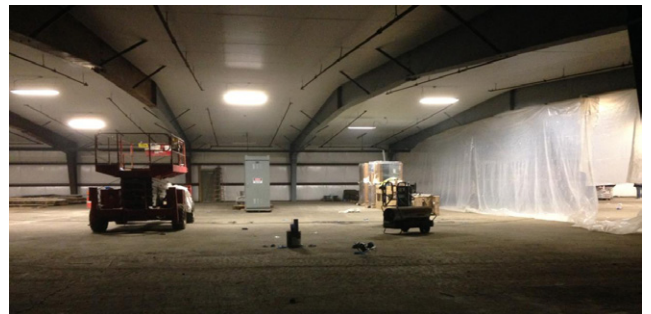
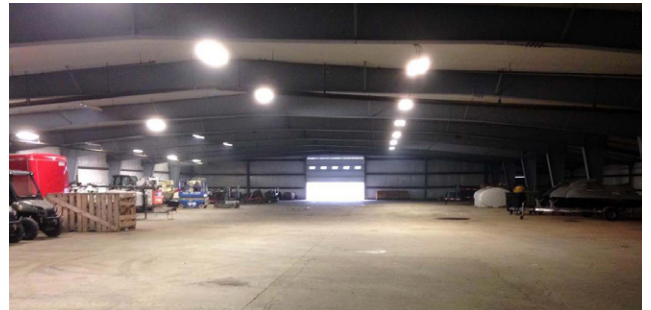
# WAREHOUSE/ MANUFACTURING BUILDING

4594 BUCKLEY ROAD  
LIVERPOOL, NY 13088



## PROPERTY FEATURES

- + 19,000± & 8,500± sq. ft. spaces available in 42,000± sq. ft. building
- + Fully renovated: new roof, insulation, heat, lights, exterior walls
- + New 14' H x 18' W insulated grade doors
- + New sprinkler system
- + Landlord will construct offices/loading docks to suit tenant's need
- + Ample parking; yard space available
- + Heavy power available
- + Located in a planned industrial park
- + Rail was on site, reinstall possible
- + 2 miles from NYS Thruway, 4 miles from city of Syracuse and 5 miles from airport



## CONTACT EXCLUSIVE AGENTS

### MARK RUPPRECHT, CCIM

Senior Broker  
+1 315 422 4200  
mark.rupprecht@cbre-syr.com

### MARTY DOWD

Senior Broker  
+1 315 422 4200  
martin.dowd@cbre-syr.com

### CBRE | SYRACUSE

Nettleton Commons  
313 E. Willow St., Ste. 202  
Syracuse, NY 13203

© 2018 CB Richard Ellis/Syracuse, N.Y., LLC. All rights reserved. This information has been obtained from sources believed reliable, but has not been verified for accuracy or completeness. You should conduct a careful, independent investigation of the property and verify all information. Any reliance on this information is solely at your own risk. Photos herein are the property of their respective owners. Use of these images without the express written consent of the owner is prohibited.

[www.cbre.com/syracuse](http://www.cbre.com/syracuse)

**CBRE** | Syracuse

Part of the CBRE affiliate network