



LELAND JAMES

MODERN PIONEERS PLUG IN HERE

ZONED FOR INSPIRED VISION AND FRESH THINKING

Located in the historic northwest Slabtown district, the Leland James features three levels of Class A work space, including penthouse with an ecoroof, active ground floor commercial and retail space, plus outdoor decks, abundant bike parking, and unique “sky porches” converted from old sky bridges.

It's where past meets future.

2175 NW RALEIGH STREET • PORTLAND, OREGON





LELAND JAMES

A MAN OF DRIVE AND GENIUS

In 1929, a visionary 36-year old Portland entrepreneur, Leland James, founded Consolidated Freightways. Before long, he found that the trucks he had bought lacked the power to climb steep mountain grades. So he dared to build his own trucks.

In a spark of inspiration, his engineers chose aluminum instead of steel for the chassis. Experts scoffed. Claimed it wouldn't work. He proved the skeptics wrong and the new truck and its company took off. It was the start of Freightliner.

OPEN COURTYARD

The Leland James is configured around a ground floor private courtyard framed by one six-story building and one three-story building. The open access creates a safe thoroughfare for residents and tenants, as well as for pedestrians and bike riders.



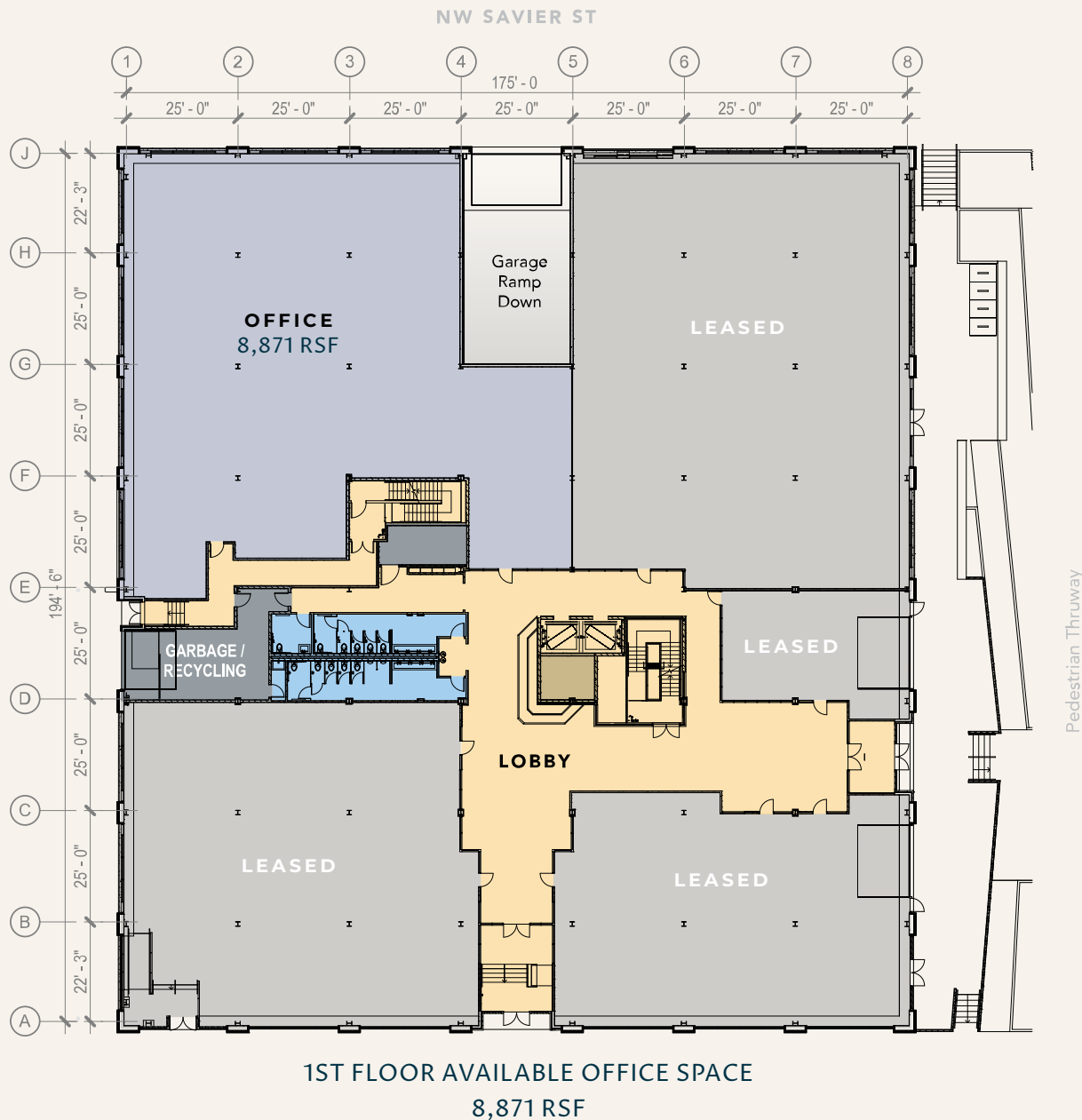
URBAN VILLAGE

Slabtown is a model for a live-work-play neighborhood. Workers and residents have walkable access to excellent schools, transit, stores, restaurants, bars, hotels, parks, and hiking trails in Portland's immense, 5,000-acre urban treasure – Forest Park.



LELAND JAMES

1ST FLOOR OFFICE & RETAIL



URBAN VILLAGE

An elevated pedestrian dock will accent the retail spaces and transition to the adjacent pedestrian access way. Select retail spaces feature large sliding wood sliding doors, and office tenant suites feature will be bright and airy with high ceilings and expansive window line.



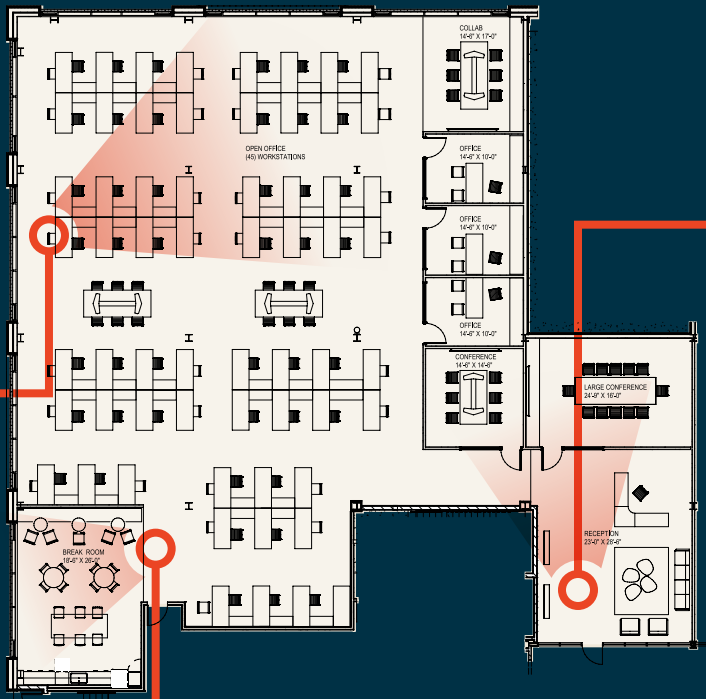
LELAND JAMES

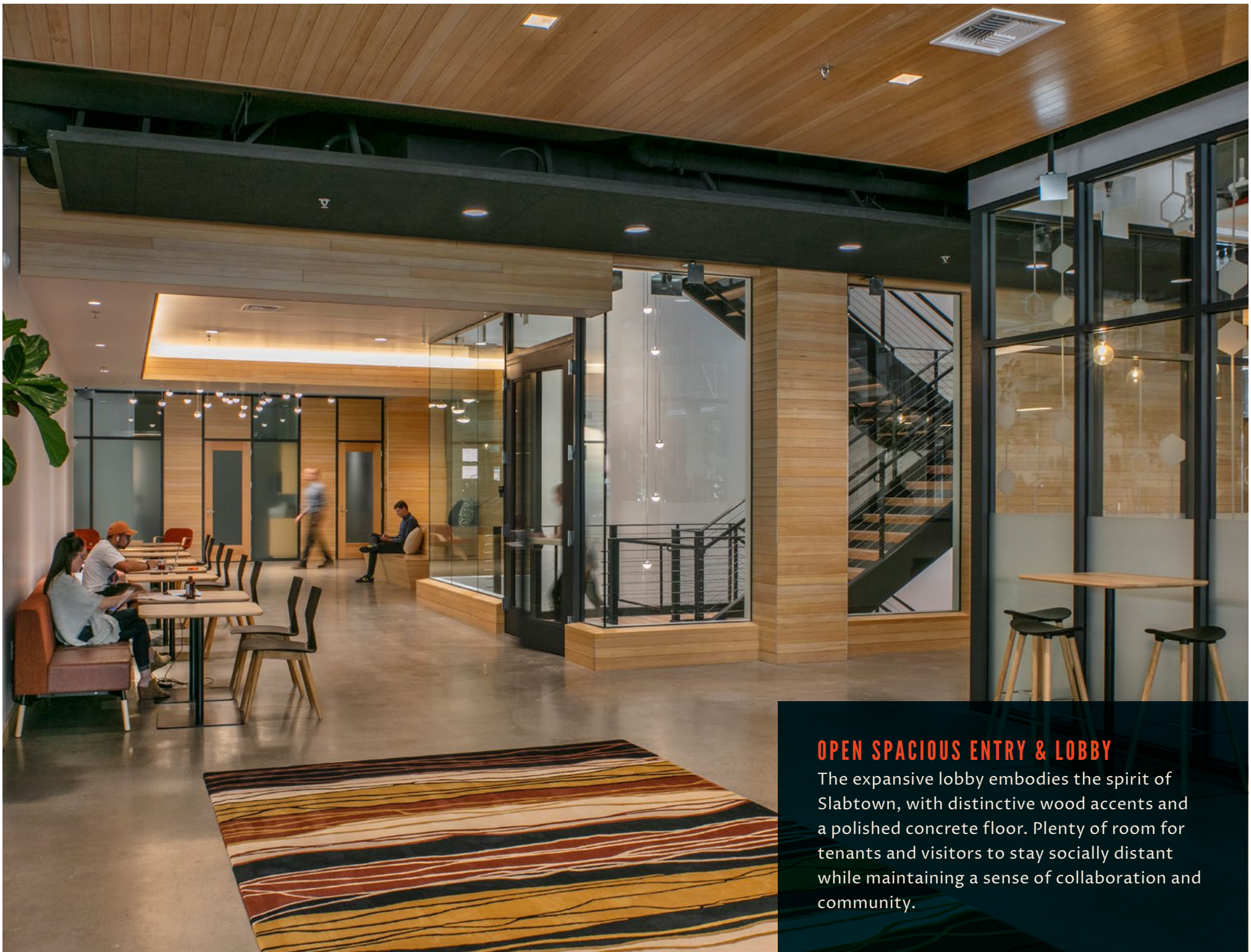
1ST FLOOR OFFICE CONCEPT



FLEXIBLE & ROOM TO BREATHE

- » Well-ventilated interior glassed-in staircase with oversized steps
- » Wide walkways and high ceilings, abundant daylight from large, fully-operable windows





OPEN SPACIOUS ENTRY & LOBBY

The expansive lobby embodies the spirit of Slabtown, with distinctive wood accents and a polished concrete floor. Plenty of room for tenants and visitors to stay socially distant while maintaining a sense of collaboration and community.

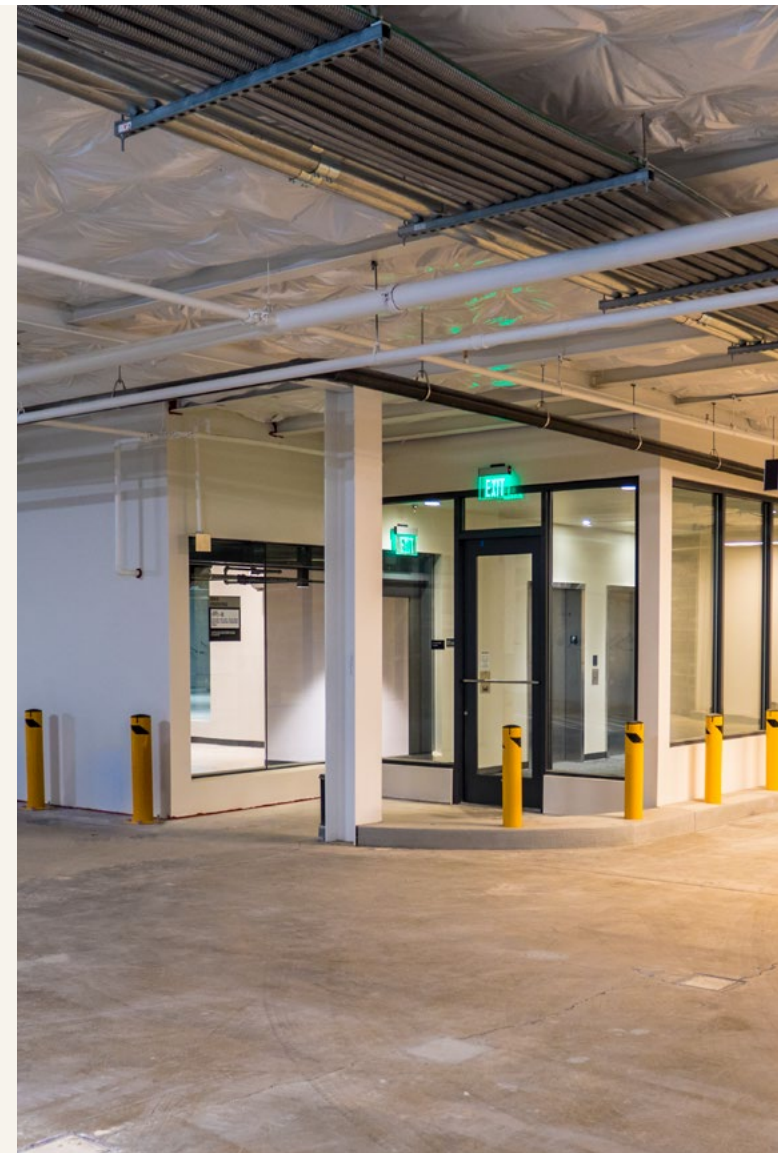
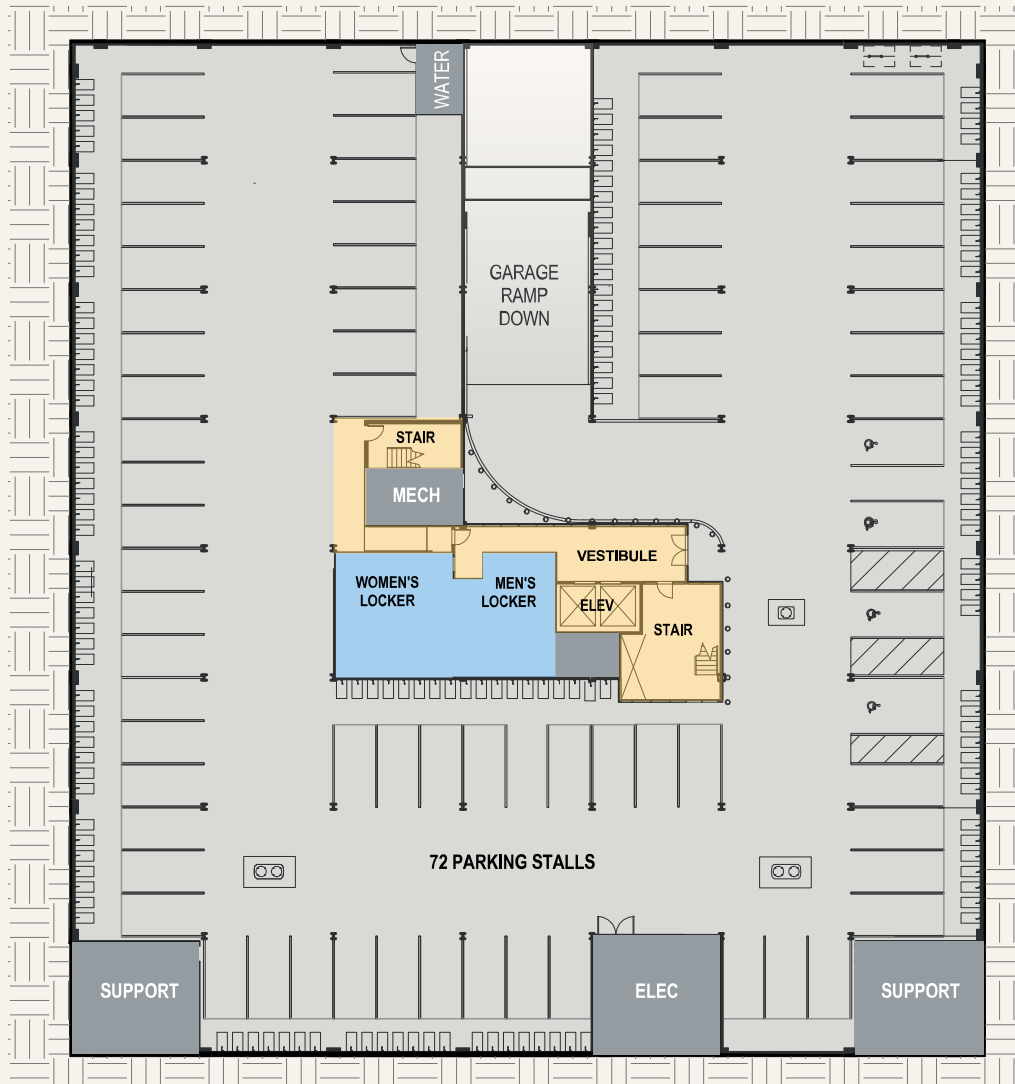


UNIQUE SKY PORCHES

Stripping the glass cladding from the existing sky bridges between the buildings at floors two and three will result in a one-of-a-kind set of “sky porches” – exclusively for the use of tenants.

LELAND JAMES

GARAGE & LOCKERS



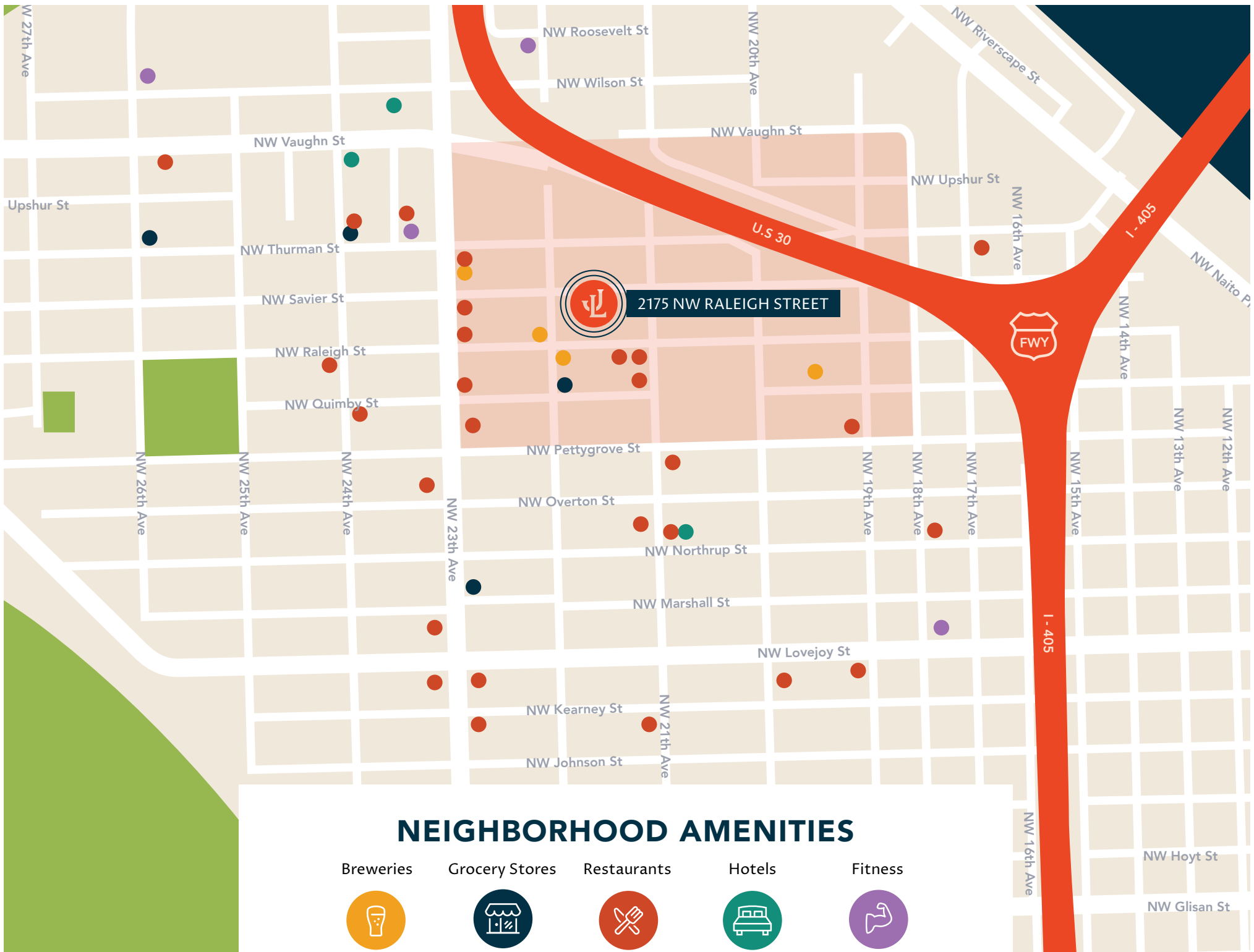
UNDERGROUND GARAGE & AMENITIES

- 72 Vehicle Stalls
- 150 Bike Hooks
- Shower and Locker Rooms



OUTDOOR DECK & ECOROOF

Outside, people will have access to an outdoor deck, framed by an ecoroof featuring vegetation and patio seating for employee gatherings and parties.



NEIGHBORHOOD AMENITIES

Breweries



Grocery Stores



Restaurants



Hotels



Fitness





NEW SEASONS

New Seasons Market opened in Slabtown in August, 2015. It's a hub for social activity with an outdoor plaza and sitting areas.

BESAWS

Besaws, a longtime neighborhood favorite, has opened a new restaurant a block away. The Solo Café and Please Louise artisan pizza are also just across the street. Salt and Straw, Portland's most popular ice cream, is close by, as are many other tasty spots and watering holes.



MUCH TO DO, DRINK AND EAT



HISTORIC HOMES

Slabtown's historic Craftsman-style homes, stately apartment buildings, and vintage industrial warehouses add to the character of the area.

FOREST PARK

And not far away is the naturally inviting Forest Park, a vast city park where hiking, trail running, mountain biking, and wildlife abounds.





STAKE A CLAIM AT THE LELAND JAMES. WHILE YOU CAN!

2175 NW RALEIGH STREET • PORTLAND, OREGON

Please reach out to our leasing team for more information:

NEWMARK

David C. Squire, SIOR

Executive Vice President/
Managing Director

david.squire@nmrk.com
503.972.5505

Josh Williams

Director

josh.williams@nmrk.com
503.972.5504

