

LAB & OFFICE SPACES
AVAILABLE ON NCSU'S
CENTENNIAL CAMPUS

1791 Varsity Dr.

RALEIGH | NC | 27606

CBRE



Tier-1 Research University

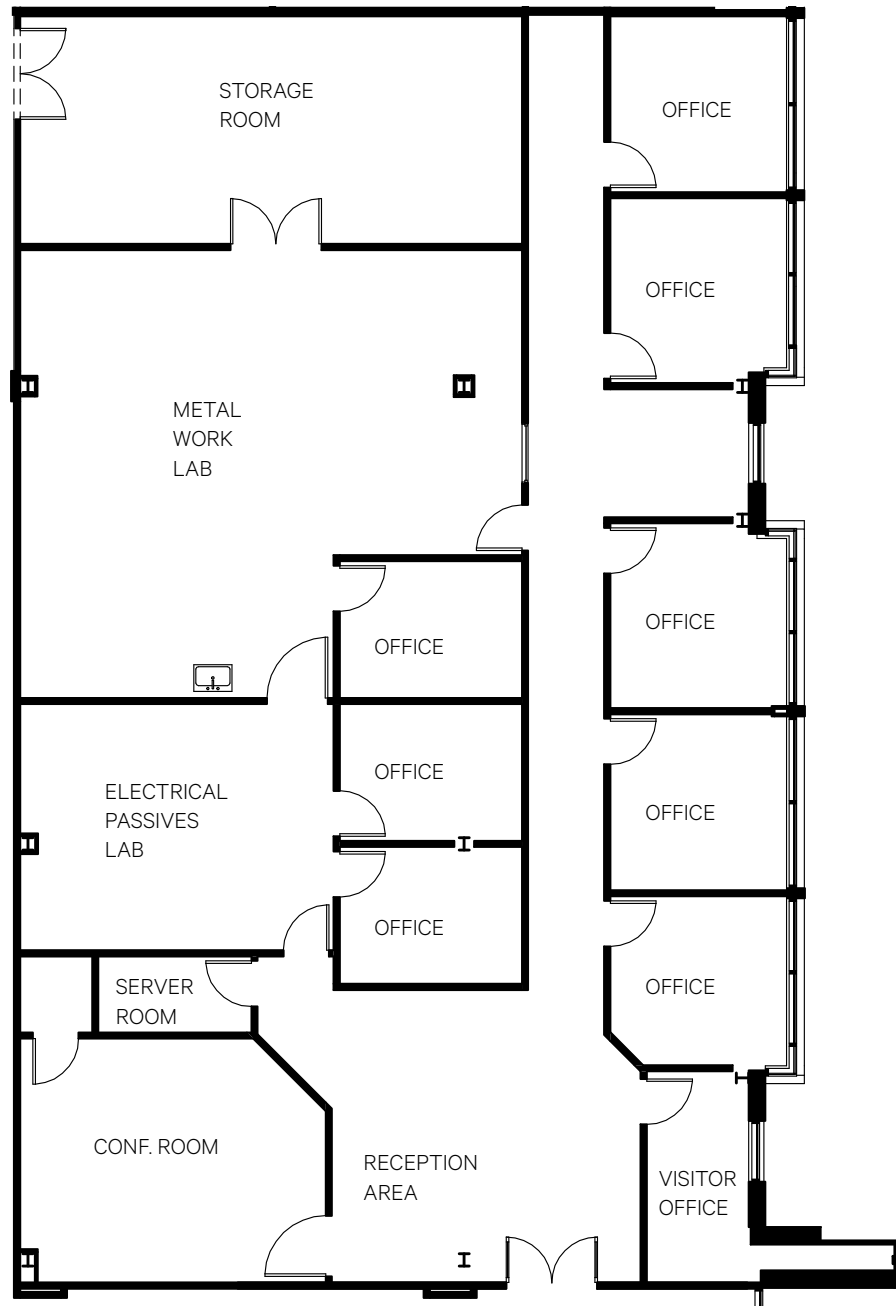
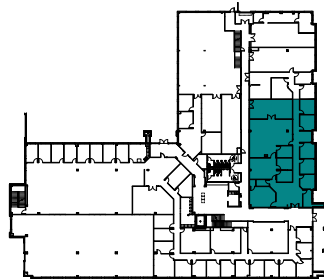
CENTENNIAL CAMPUS

1791 Varsity Drive is located in North Carolina State University's world-class Centennial Campus, one of Raleigh-Durham's premier office and research parks. Situated just south of NC State's main campus and two miles west of Downtown Raleigh, the property benefits from an amenity-rich location just south of NC State's main campus. Centennial Campus is a 1,314-acre research park owned and operated by NC State. The campus is home to more than 70 corporate, governmental and non-profit "partners," along with 75 N.C. State research centers, institutes and departmental units and numerous colleges. In addition to the buildings and research centers, Centennial Campus also contains public walkways, a fishing pier and lake, game fields and an 18-hole golf course.

Lab Suite 120

4,977 SF

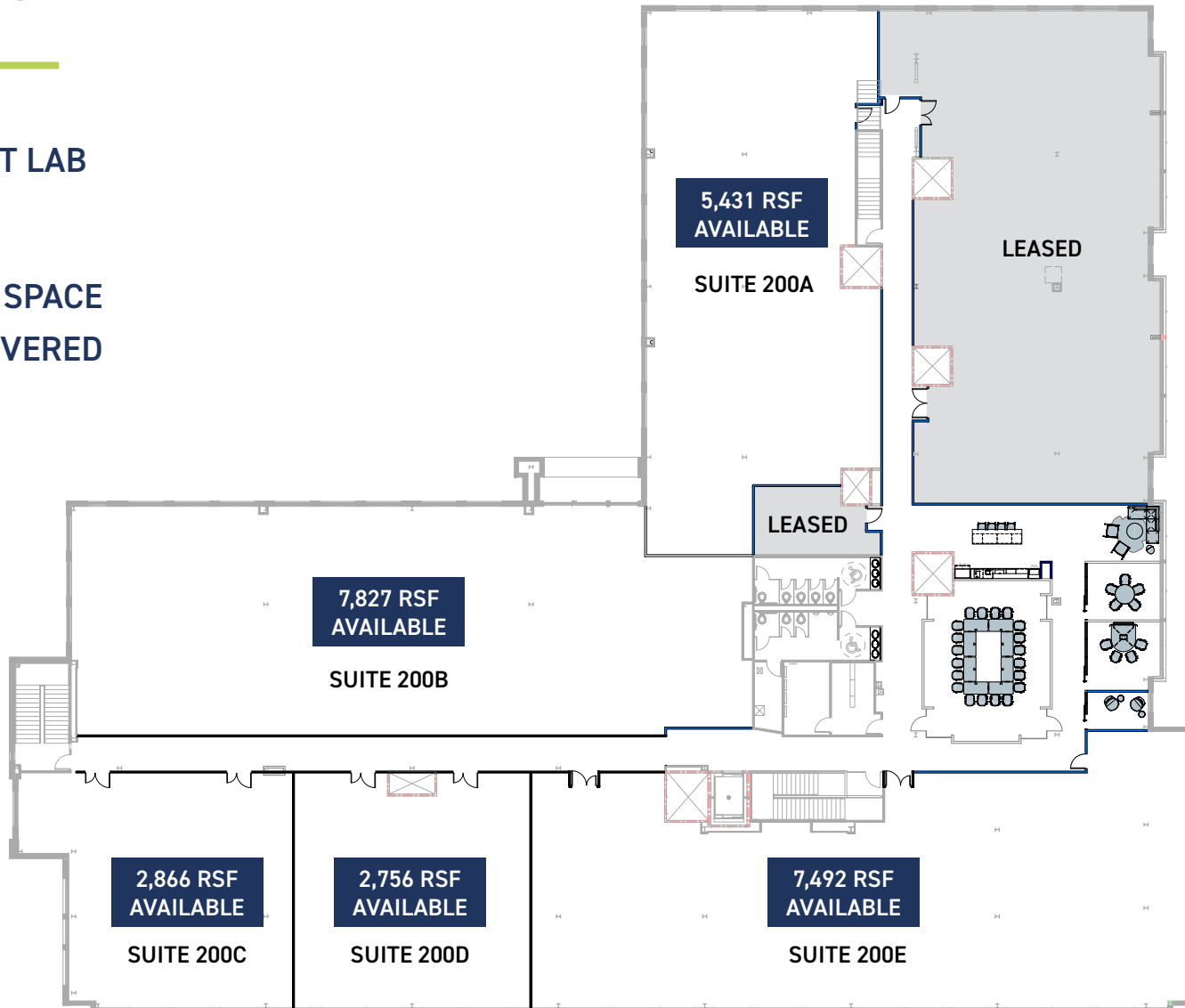
- DIRECT LOBBY ACCESS
- HIGH BAY STORAGE WITH LOADING DOCK
- ADJACENT COVERED PARKING



Office or Lab 2nd Floor

UP TO 26,372 RSF AVAILABLE

- BUILD-TO-SUIT LAB
OPTIONALITY
- SHARED
CONFERENCE SPACE
- ADJACENT COVERED
PARKING





Aerial & Amenities



1791 Varsity Dr.

RALEIGH | NC | 27606



CONTACTS

Lee Clyburn, SIOR

Executive Vice President

+1 919 831 8266

lee.clyburn@cbre.com

Ed Pulliam

Executive Vice President

+1 919 831 8237

ed.pulliam@cbre.com

John Brewer

Executive Vice President

+1 919 831 8214

john.brewer@cbre.com

CBRE

© 2024 CBRE, Inc. All rights reserved. This information has been obtained from sources believed reliable but has not been verified for accuracy or completeness. CBRE, Inc. makes no guarantee, representation or warranty and accepts no responsibility or liability as to the accuracy, completeness, or reliability of the information contained herein. You should conduct a careful, independent investigation of the property and verify all information. Any reliance on this information is solely at your own risk. CBRE and the CBRE logo are service marks of CBRE, Inc. All other marks displayed on this document are the property of their respective owners, and the use of such marks does not imply any affiliation with or endorsement of CBRE.