

300

M

NEWMARK

ROMAN ADLER Executive Managing Director
415-274-4434 roman.adler@nmrk.com CA RE LIC #01520766

CASSIDY ZERRER Senior Managing Director
415-274-4432 cassidy.zerrer@nmrk.com CA RE LIC #0177932

HANNAH POTTER Managing Director
415-445-5113 hannah.potter@nmrk.com CA RE LIC #01924485

PROFESSIONAL SERVICES SUITES

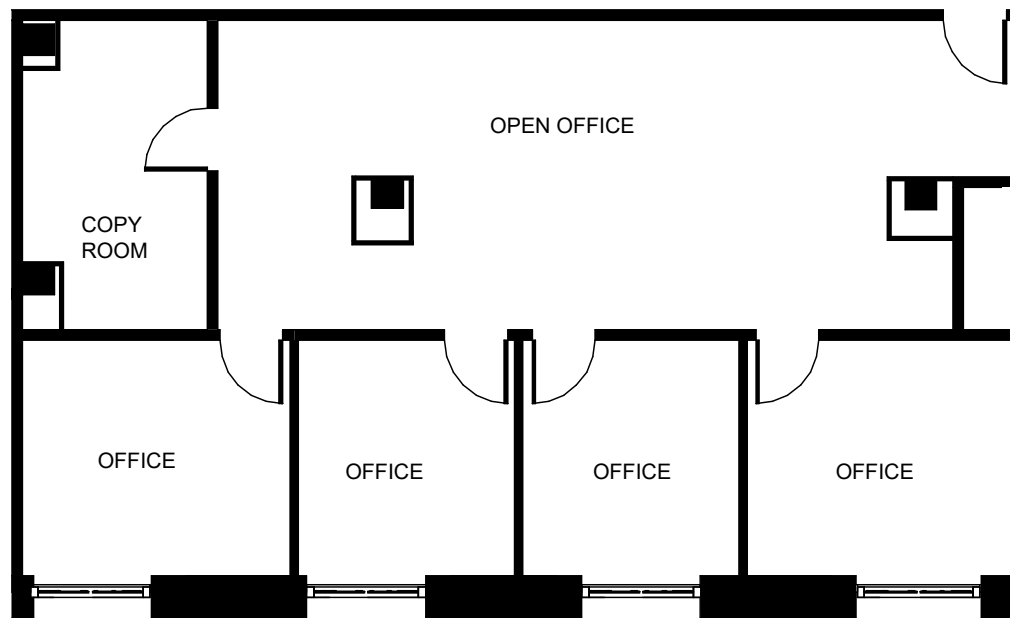
SUITE	VIRTUAL TOUR	RSF	DESCRIPTION	AVAILABLE
201		1,544	4 private offices, open area, copy/production room.	Now
208		2,403	3 private offices, open area, kitchen, storage/server room.	Now
638		1,711	1 conference room, 3 private offices, open area, storage room.	Now
639		1,542	1 conference room, 3 private offices, open area, kitchen.	Now
700		5,421	5 private offices/meeting rooms, 2 conference rooms, large open area, copy room, kitchen, storage room.	Now
730		2,451	7 private offices, large kitchen, storage room.	Now
750		1,862	4 private offices, open area, kitchen, updated finishes.	Now
789		1,560	5 private offices, open area, production area.	Now
790		2,823	1 conference room, 2 private offices, large open area, kitchen.	Now
817		874	Open area, 1 conference room, 1 office.	Now
825		1,993	1 conference room, 4 private offices, kitchenette, updated finishes.	Now
850		2,377	Open area, 6 private offices, 1 conference room, reception.	Now
860		1,929	2 private offices, open area.	Now
888		2,816	1 conference room, 4 offices, open area, kitchen.	Now
925		1,927	1 conference room, 2 private offices, open area, kitchenette.	Now
1103		509	1 private office.	Now



SUITE 201 - 1,544 RSF



- 4 private offices
- Open area
- Copy/production room

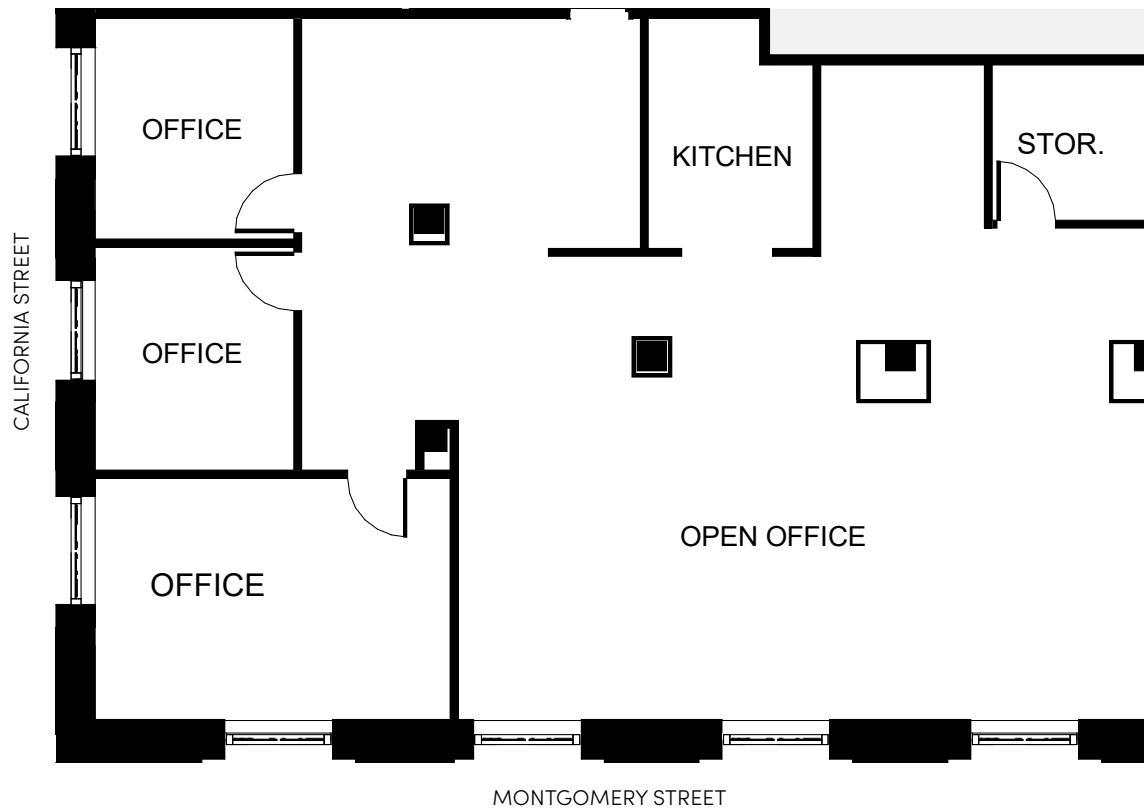


MONTGOMERY STREET

SUITE 208 - 2,403 RSF



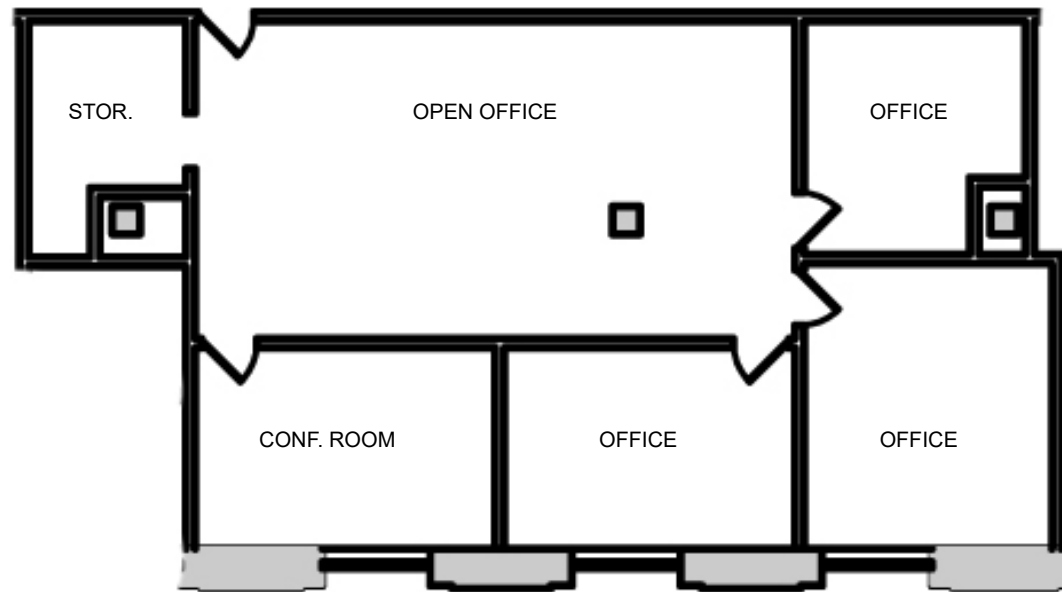
- 3 private offices
- Kitchen
- Open area
- Storage/server room



SUITE 638 - 1,711 RSF



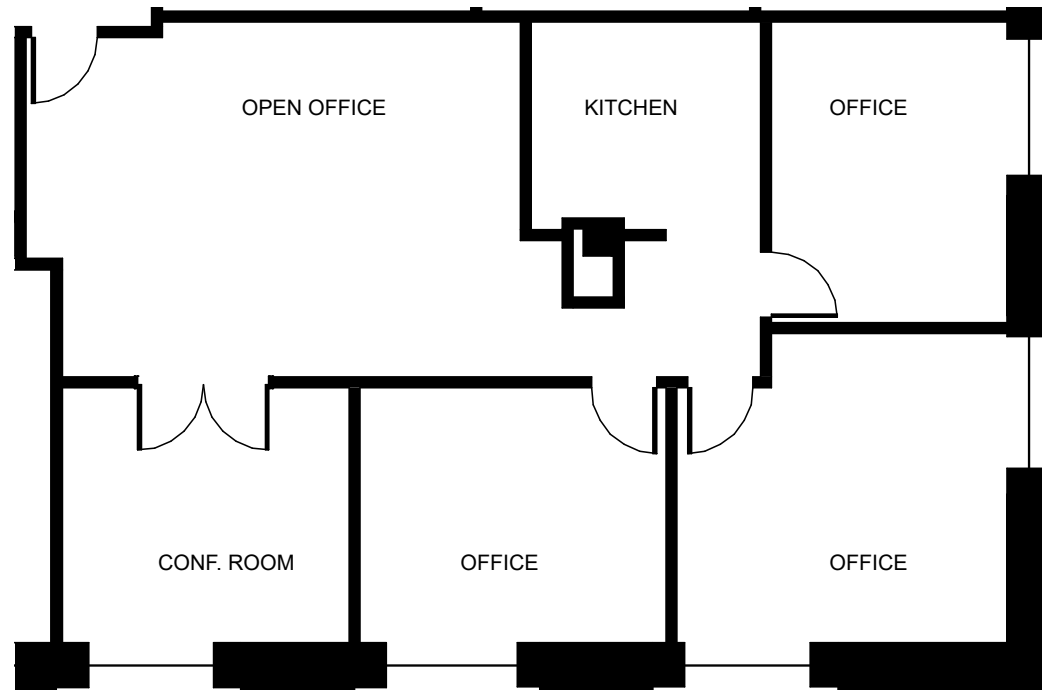
- 1 conference room
- 3 private offices
- Open area
- Storage room



MONTGOMERY STREET

SUITE 639 - 1,542 RSF

- 1 conference room
- 3 private offices
- Open area
- Kitchen

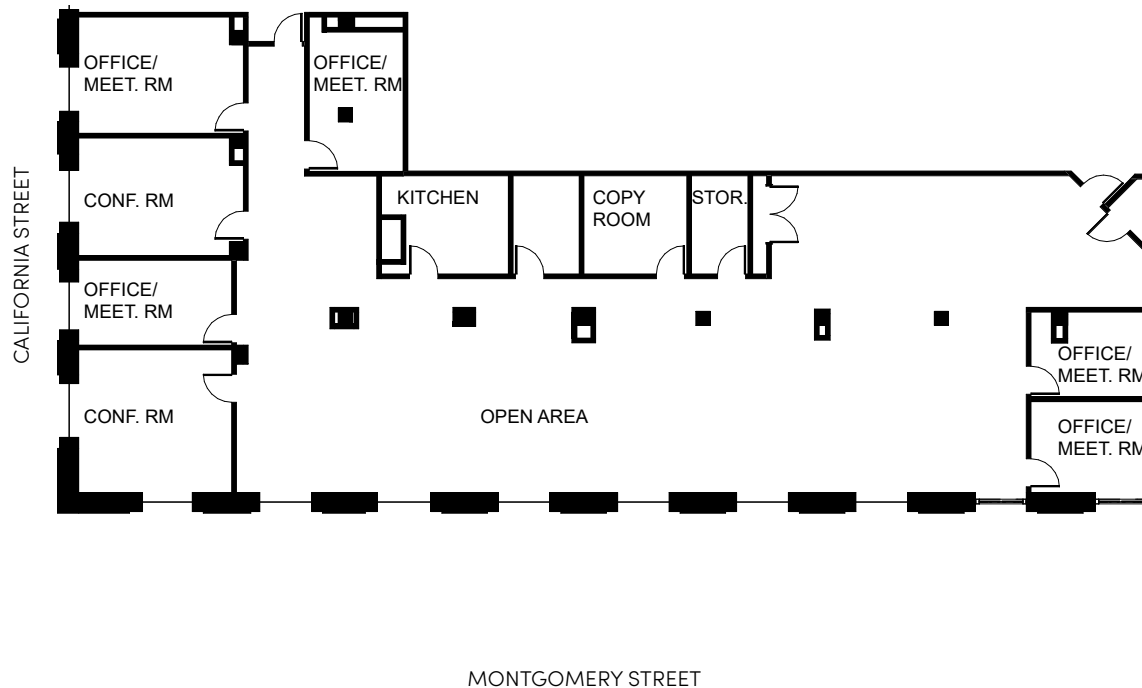


MONTGOMERY STREET

SUITE 700 - 5,421 RSF

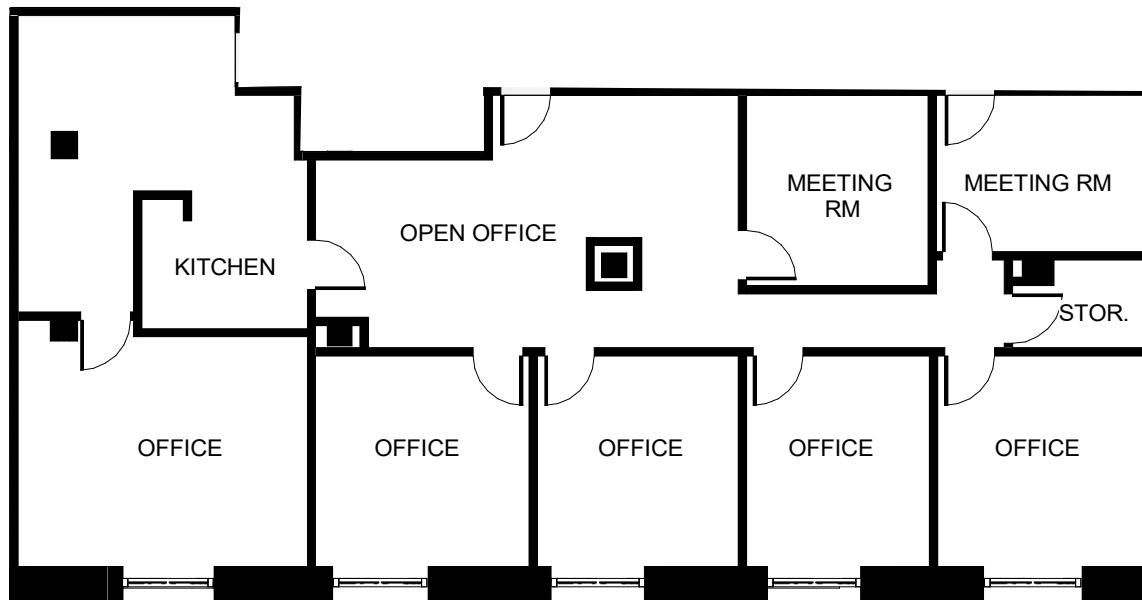


- 5 private office/meeting rooms
- 2 conference rooms
- Large open area
- Copy room
- Kitchen
- Storage room



SUITE 730 - 2,451 RSF

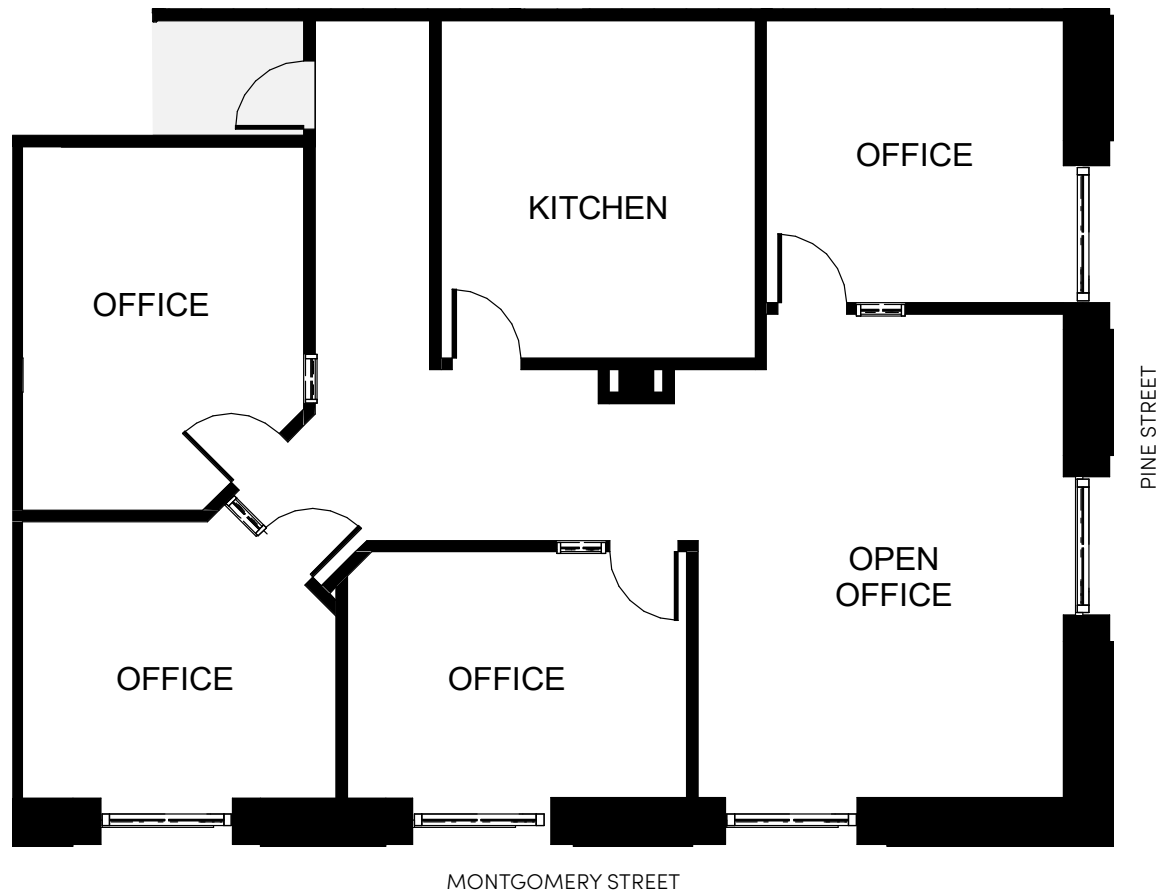
- 7 private offices
- Large kitchen
- Storage room



MONTGOMERY STREET

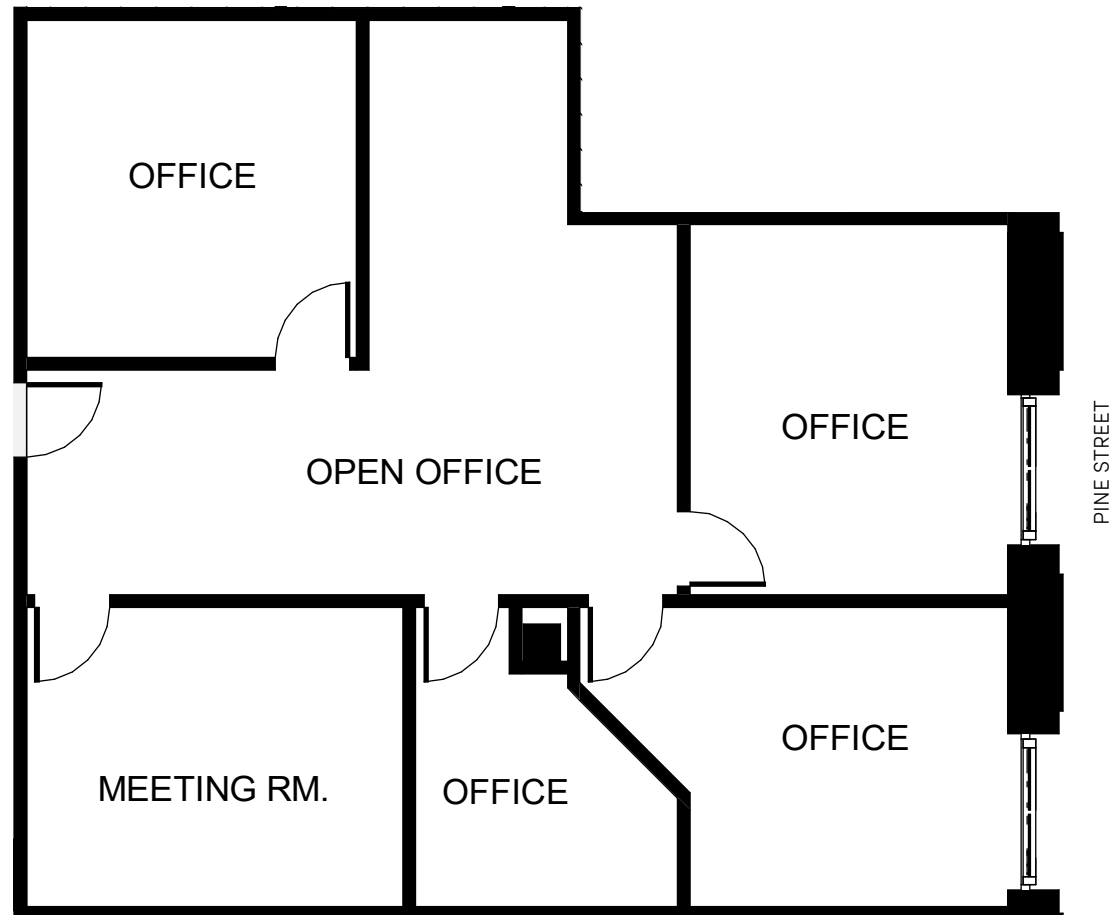
SUITE 750 - 1,862 RSF

- 4 private offices
- Open area
- Kitchen
- Updated finishes



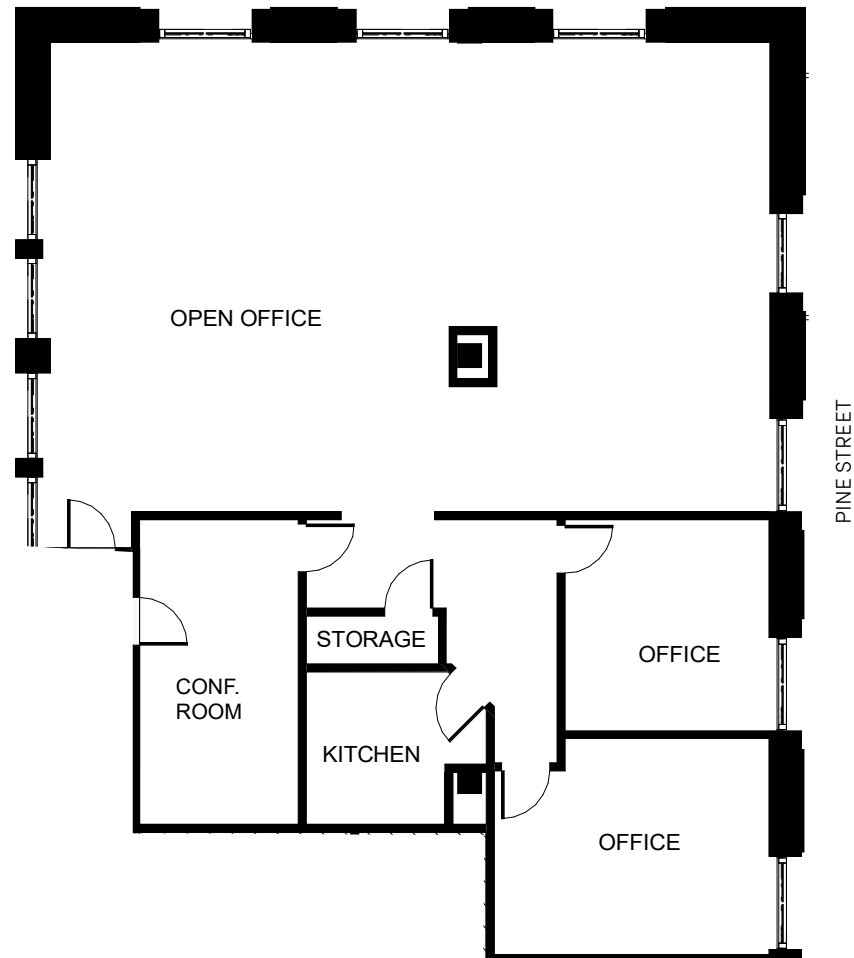
SUITE 789 - 1,560 RSF

- 5 private offices
- Open area
- Production area



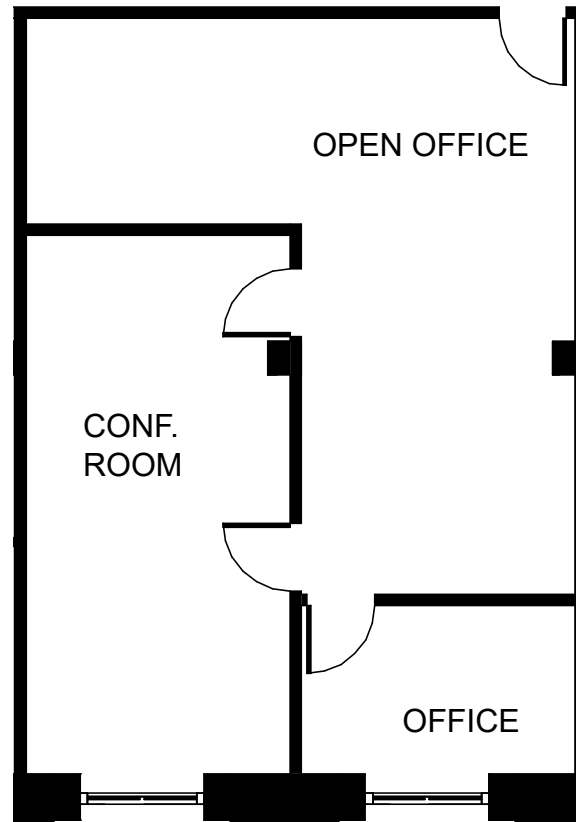
SUITE 790 - 2,823 RSF

- 1 conference room
- 2 private offices
- Large open area
- Kitchen



SUITE 817 - 874 RSF

- Open area
- 1 conference room
- Sink

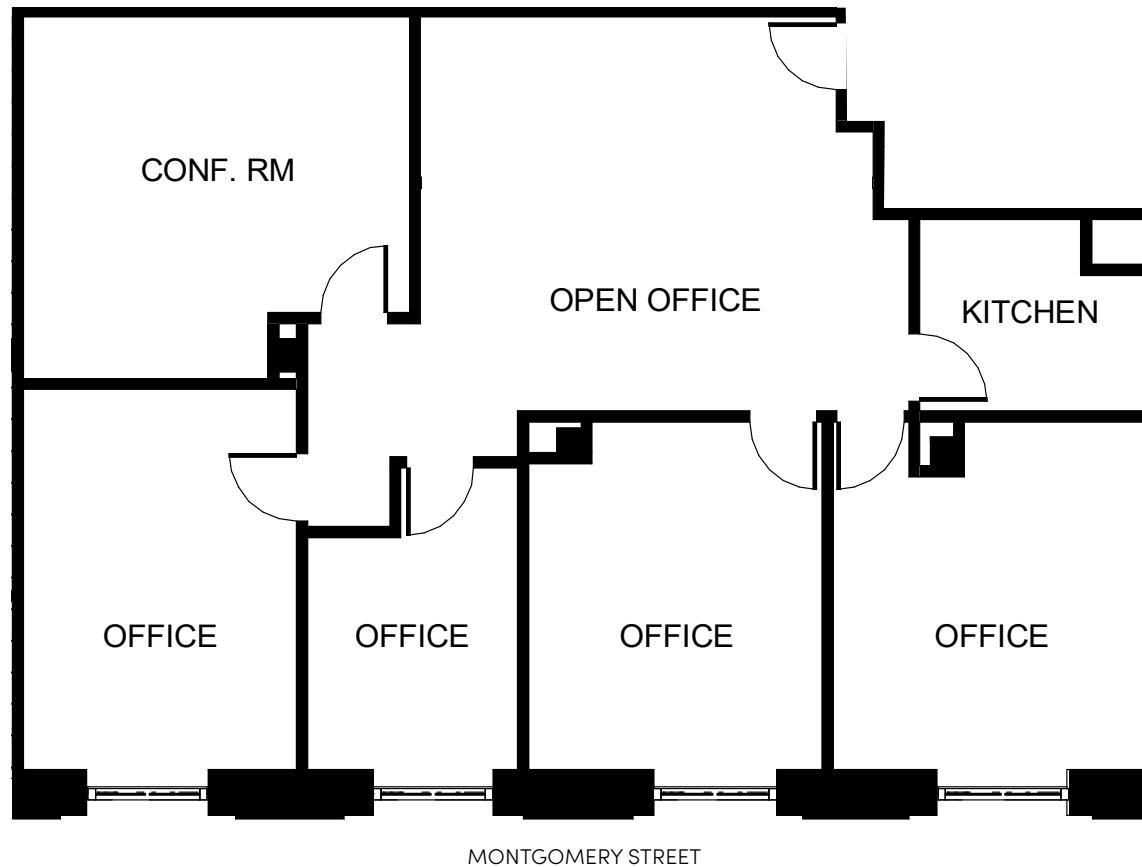


MONTGOMERY STREET

SUITE 825 - 1,993 RSF

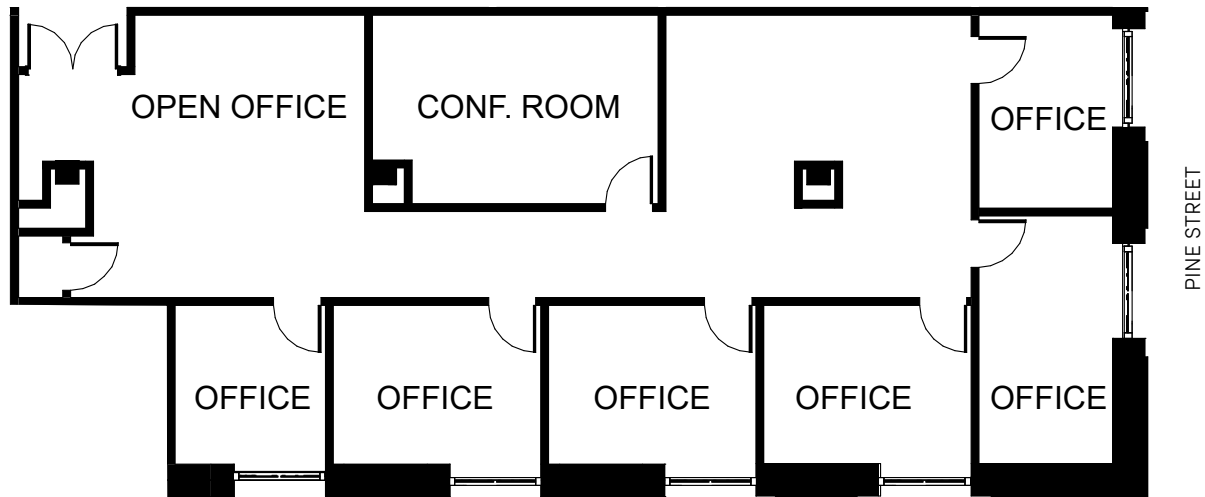


- 1 conference room
- 4 private offices
- Kitchenette
- Updated finishes



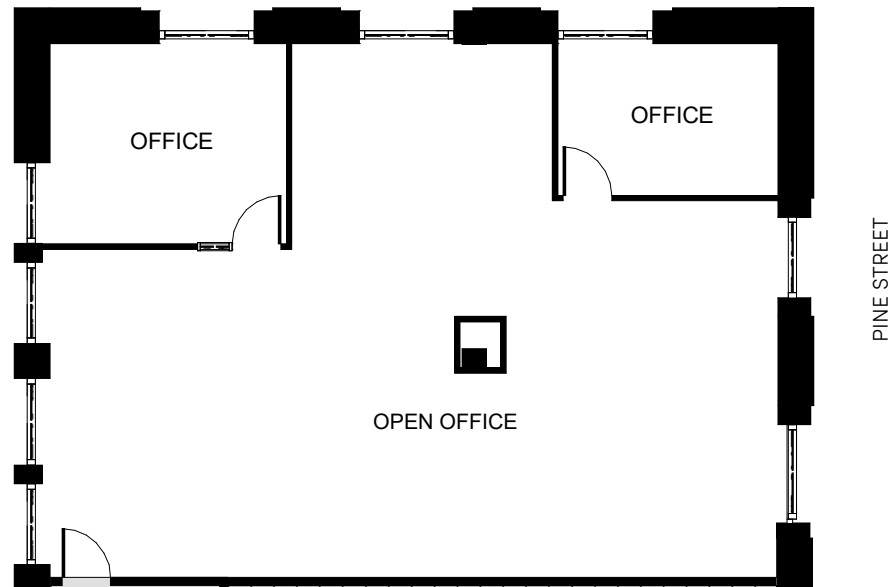
SUITE 850 - 2,377 RSF

- Open area
- 6 private offices
- 1 conference room
- Reception



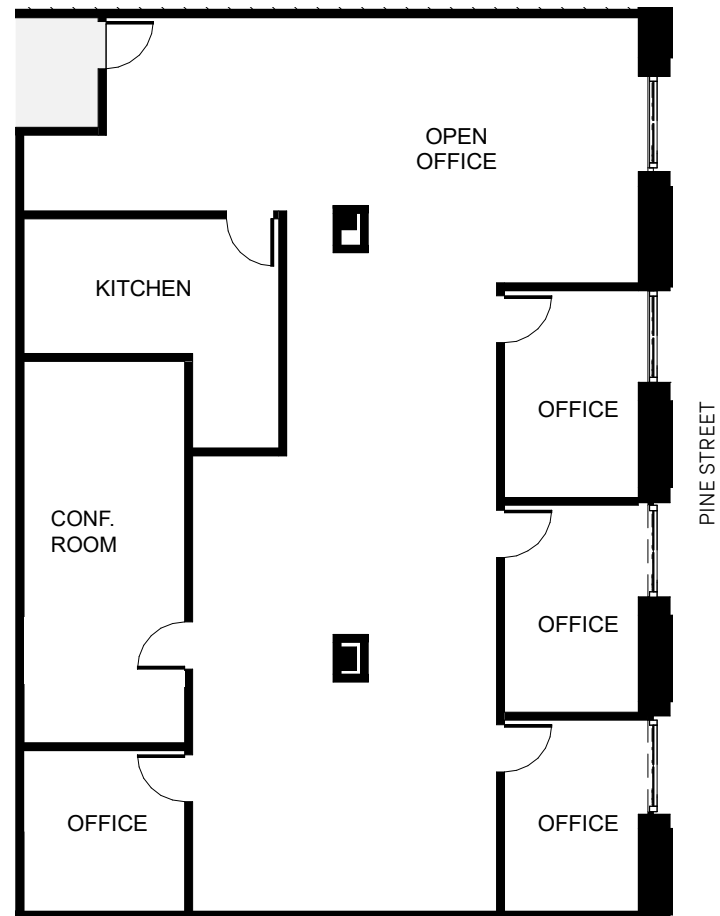
SUITE 860 - 1,929 RSF

- 2 private offices
- Open area



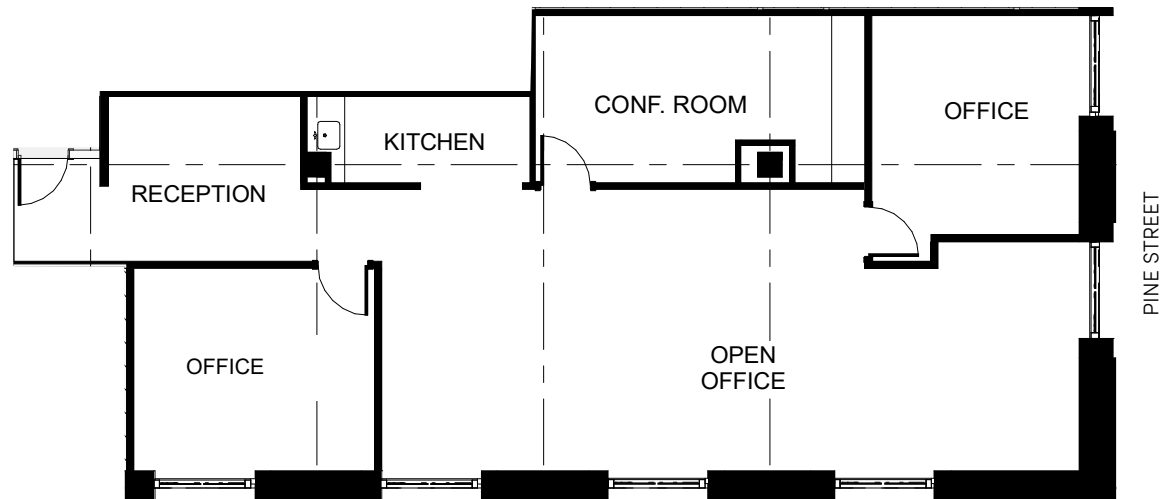
SUITE 888 - 2,816 RSF

- 1 conference room
- 4 offices
- Open area
- Kitchen



SUITE 925 - 1,927 RSF

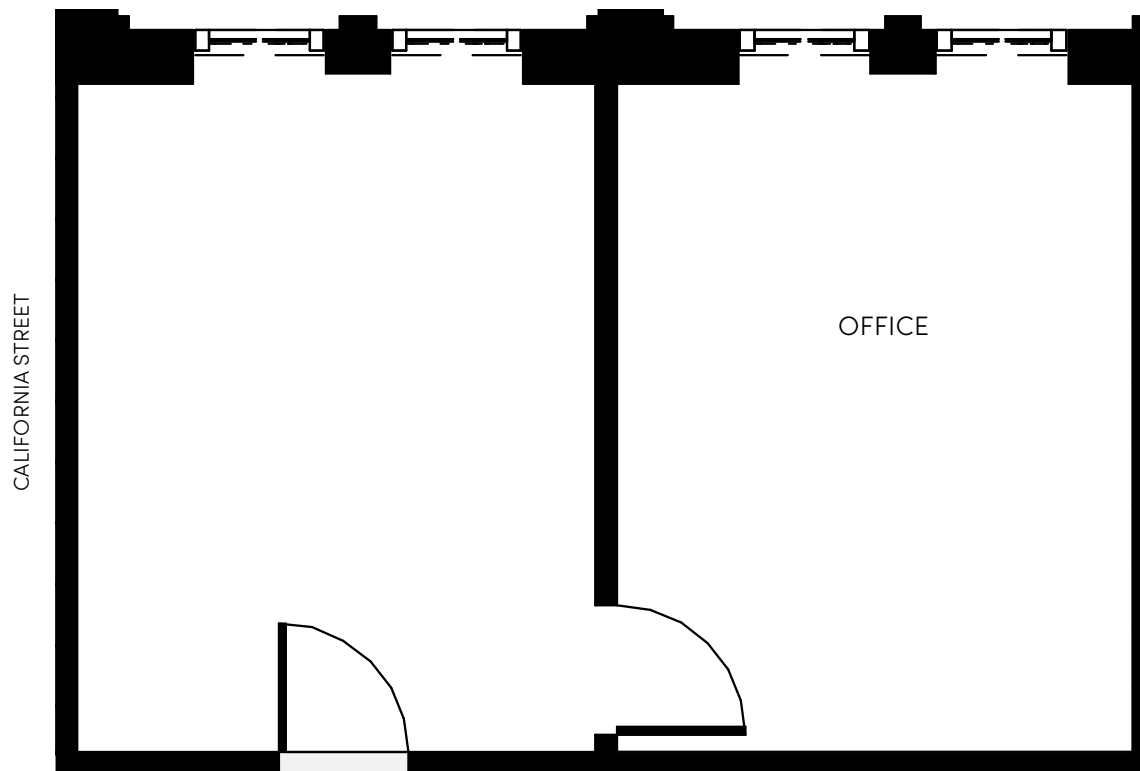
- 1 conference room
- 2 private offices
- Open area
- Kitchenette



MONTGOMERY STREET

SUITE 1103 - 509 RSF

- 1 private office



300



One Sansome Street, Suite 4100, San Francisco, CA 94104

The distributor of this communication is performing acts for which a real estate license is required. The information contained herein has been obtained from sources deemed reliable but has not been verified and no guarantee, warranty or representation, either express or implied, is made with respect to such information. Terms of sale or lease and availability are subject to change or withdrawal without notice.

ROMAN ADLER Executive Managing Director
415-274-4434 roman.adler@nmrk.com CA RE LIC #01520766

CASSIDY ZERRER Senior Managing Director
415-274-4432 cassidy.zerrer@nmrk.com CA RE LIC #0177932

HANNAH POTTER Managing Director
415-445-5113 hannah.potter@nmrk.com CA RE LIC #01924485

NEWMARK