

FOR LEASE

# PROFESSIONAL OFFICE SPACE

FIRST REPUBLIC OFFICE PARK BUILDING II

445 ELECTRONICS PKWY.

LIVERPOOL, NY 13088



## AVAILABLE SPACE

- + Up to 20,076 SF  
Entire floor plate  
2nd floor  
Dividable
- + Up to 18,461 SF  
1st floor  
Dividable
- + 1,468 SF suite  
1st floor  
Prime location off  
main lobby

## PROPERTY SUMMARY

- + Tremendous identity/signage exposure
- + Outstanding access to I-90 (NYS Thruway East/West Exit 37 at property entrance intersection) and I-81 North/South
- + Minutes to airport and downtown Syracuse
- + Ample parking
- + Signalized intersection at property entrance for easy ingress/egress
- + Recently renovated common bathrooms
- + Special rates offered to Office Park Tenants for Hotel Rooms, Catering and the Convention Center at the Holiday Inn and StayBridge Suites (extended stay) next door
- + Amenities for hotel guests include indoor pool, gym and free 24-hour transportation to/from airport



## CONTACT EXCLUSIVE AGENTS

### BILL ANNINOS

Senior Broker  
+1 315 422 4200  
bill.anninos@cbre-syr.com

### ED KIESA, CCIM

Senior Broker  
+1 315 422 4200  
ed.kiesa@cbre-syr.com

### CBRE | SYRACUSE

Nettleton Commons  
313 E. Willow St., Ste. 202  
Syracuse, NY 13203

© 2018 CB Richard Ellis/Syracuse, N.Y., LLC. All rights reserved. This information has been obtained from sources believed reliable, but has not been verified for accuracy or completeness. You should conduct a careful, independent investigation of the property and verify all information. Any reliance on this information is solely at your own risk. Photos herein are the property of their respective owners. Use of these images without the express written consent of the owner is prohibited.

[www.cbre.com/syracuse](http://www.cbre.com/syracuse)

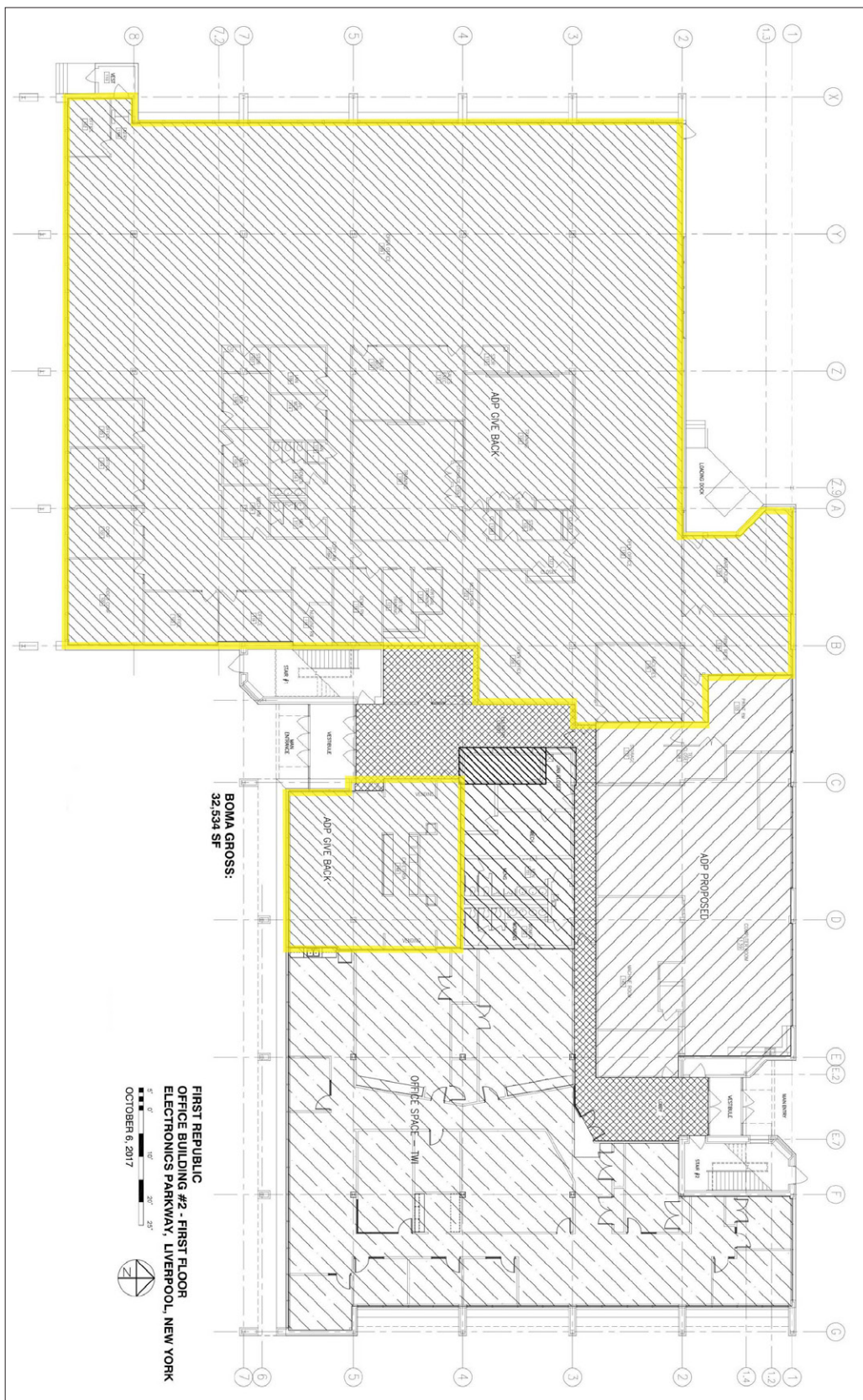
**CBRE** | Syracuse

Part of the CBRE affiliate network

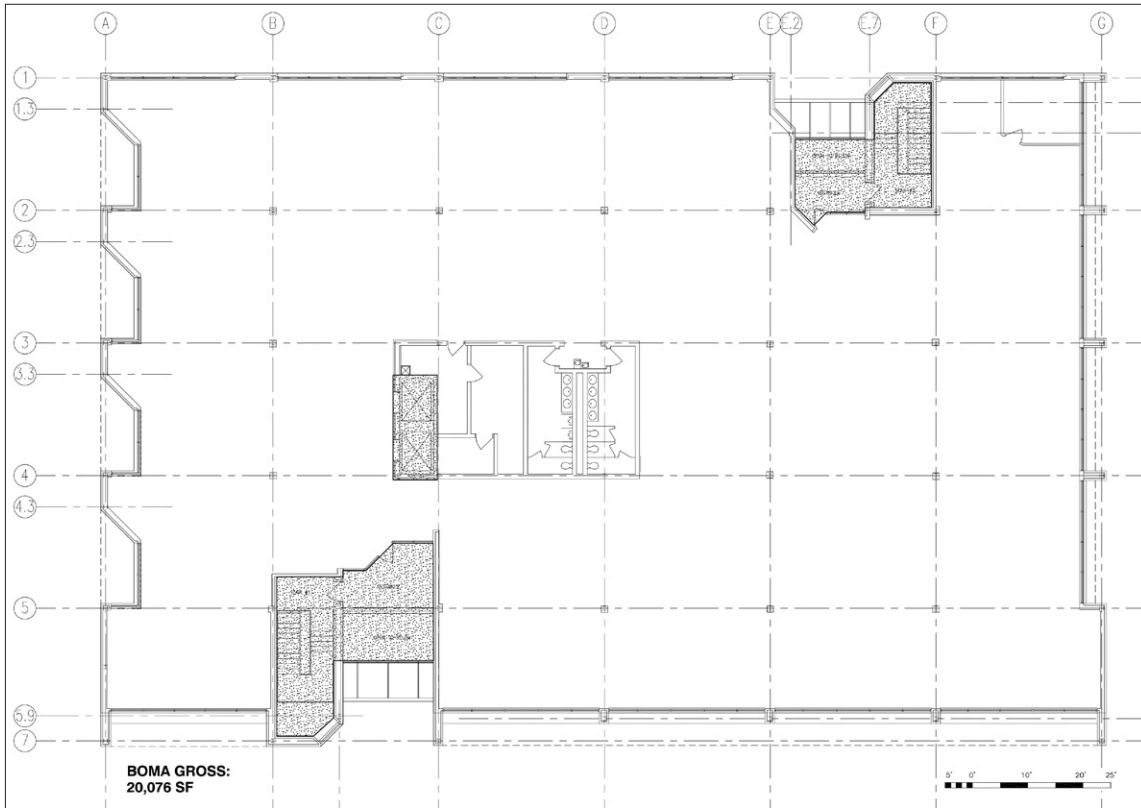
FOR LEASE

# FIRST REPUBLIC OFFICE PARK BUILDING II

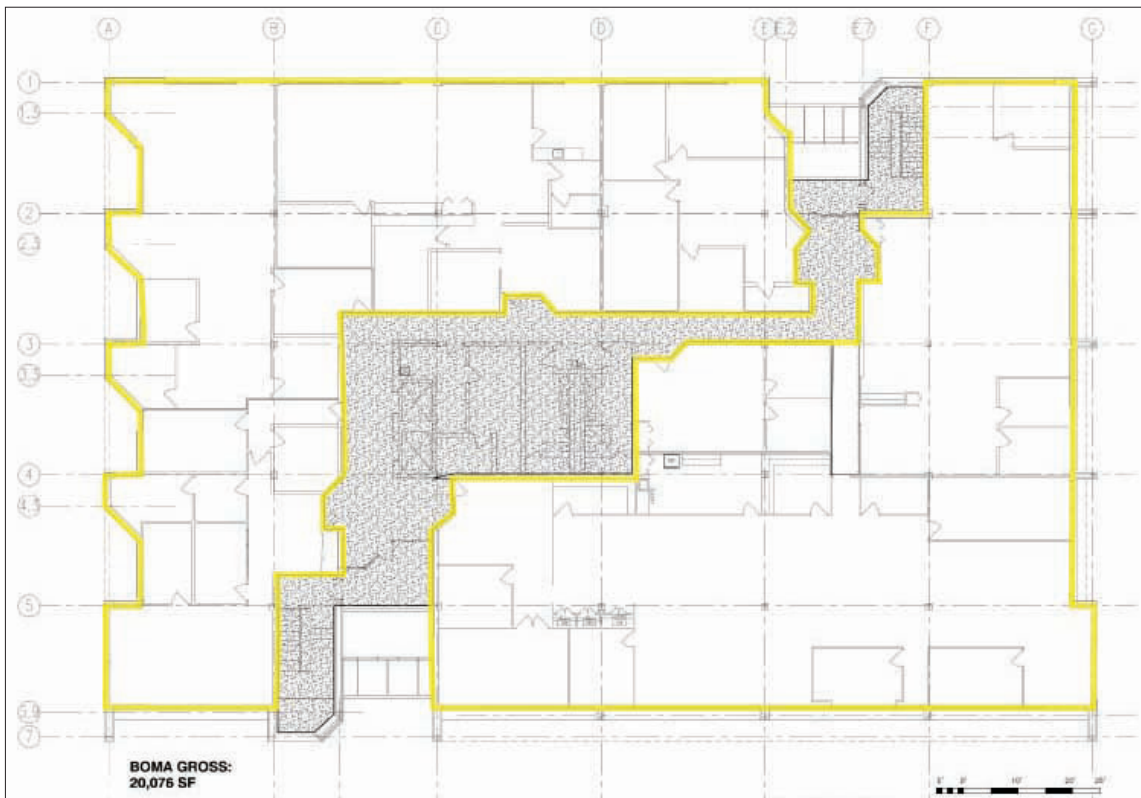
## FLOOR PLAN 1ST FLOOR



**FLOOR PLAN 2ND FLOOR, SINGLE TENANT**



**FLOOR PLAN 2ND FLOOR, TWO TENANTS**

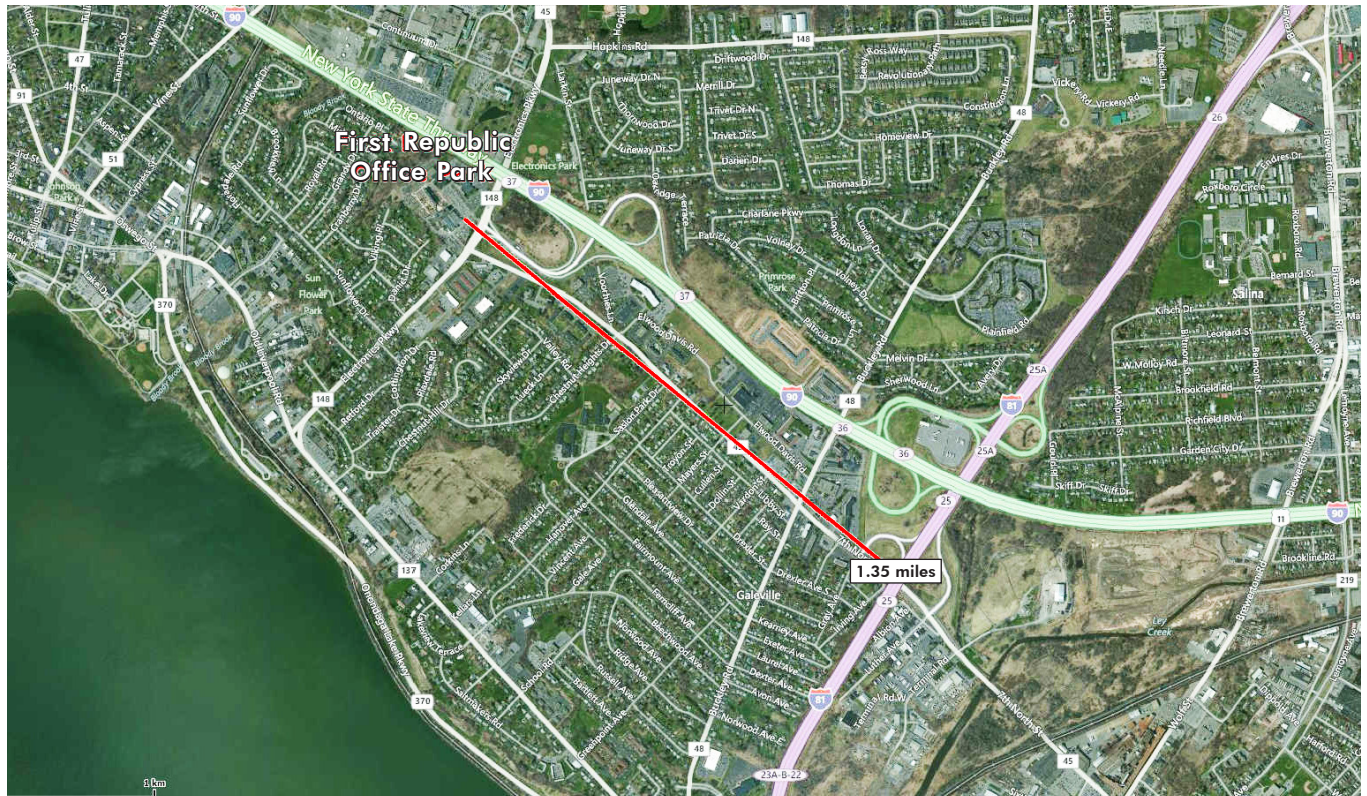




FOR LEASE  
**FIRST REPUBLIC**

445 ELECTRONICS PKWY.  
LIVERPOOL, NY 13088

**PROPERTY AERIALS**



© 2018 CB Richard Ellis/Syracuse, N.Y., LLC. All rights reserved. This information has been obtained from sources believed reliable, but has not been verified for accuracy or completeness. You should conduct a careful, independent investigation of the property and verify all information. Any reliance on this information is solely at your own risk. Photos herein are the property of their respective owners. Use of these images without the express written consent of the owner is prohibited.

**CBRE** | Syracuse

Part of the CBRE affiliate network