

±15,600 SF OF HANGAR SPACE AND ±836 SF OF OFFICE/STORAGE SPACE AT

Van Nuys Airport

SIGNATURE NORTH HANGAR
FOR SUBLEASE



16700 ROSCOE BOULEVARD | VAN NUYS, CA 91406

CBRE

HANGAR / OFFICE / STORAGE AVAILABLE FOR SUBLEASE

CBRE is pleased to offer approximately $\pm 15,600$ SF of hangar space and ± 836 SF of office/storage space for sublease at Van Nuys Airport. The sublease term is through October 31st, 2022, and there are five one-year extension options. This is a rare opportunity to lease a completely private hangar at Van Nuys Airport that can accommodate large-body jets.

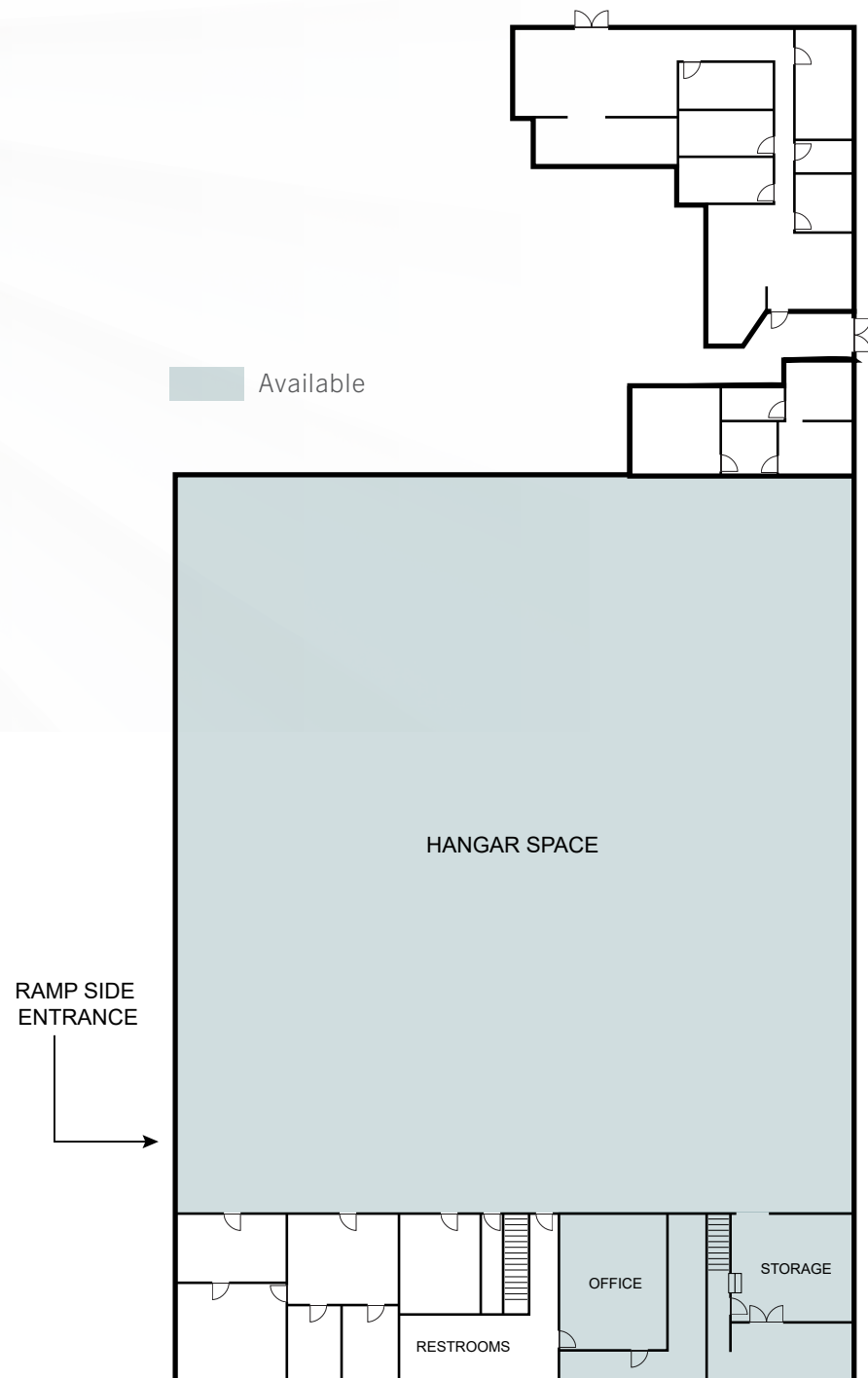
SUBLEASE RATE
\$38,500 PER MO

HIGHLIGHTS

- ▶ Private hangar facility
- ▶ Sublease term through October 31, 2022 with five one-year extension options
- ▶ Hangar Bay: $\pm 123'$ x $\pm 129'5''$
- ▶ Hangar Door Opening: $\pm 126'8''$ x $\pm 28'$
- ▶ Hangar Center Height: $\pm 41'7''$
- ▶ Roll up Storage: $\pm 18'9''$ x $\pm 19'1''$
- ▶ Office Area: $\pm 23'11''$ x $\pm 18'11''$

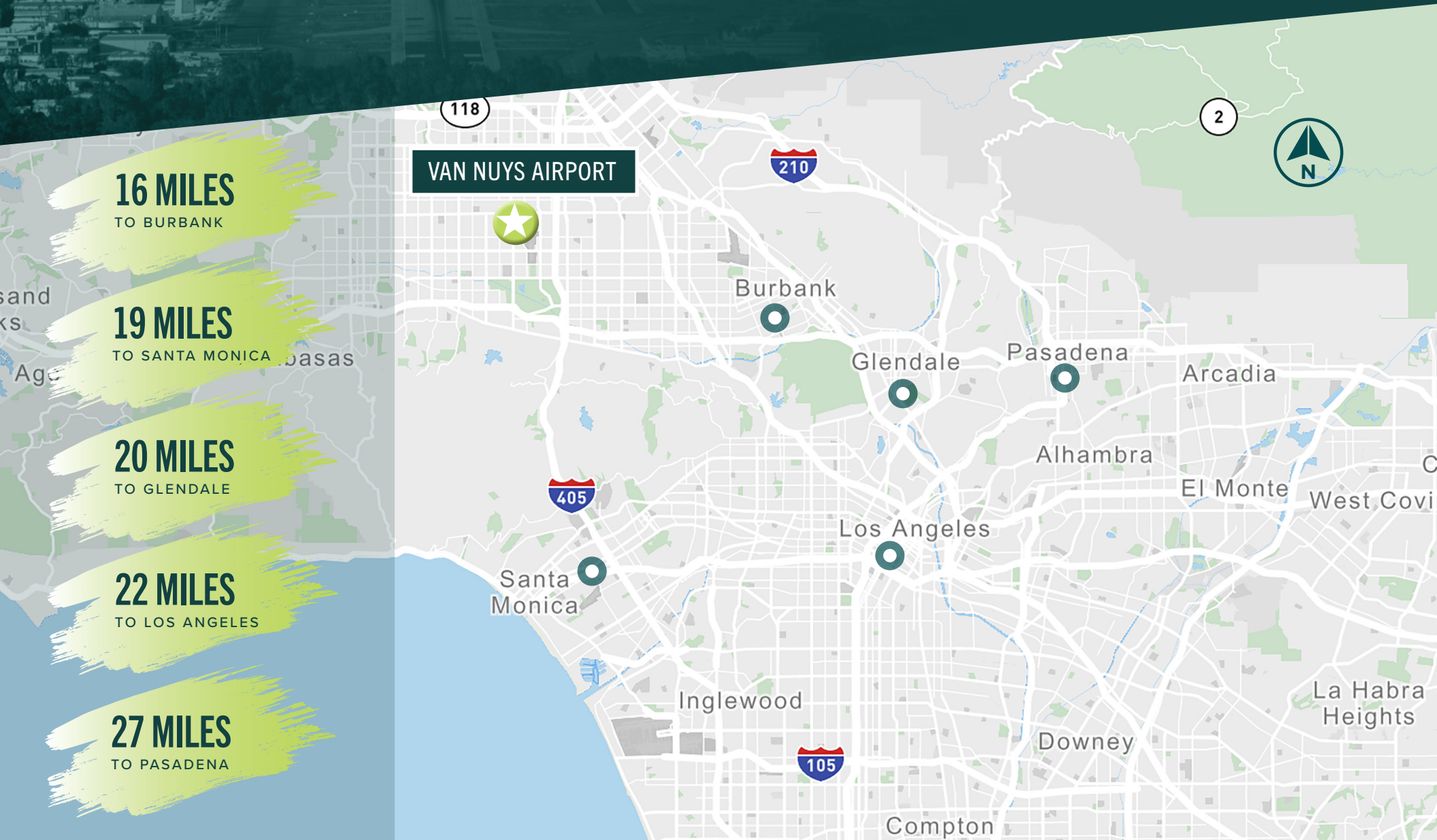


HANGAR FLOOR PLAN



Van Nuys Airport

Located in the Van Nuys neighborhood of Los Angeles, the Van Nuys Airport is one of the most popular general aviation airports in the world. The airport covers 725 acres and has two asphalt runways, the longest of which is 8,001 feet. The airport is home to four FBOs: Castle and Cook Aviation, Clay Lacy Aviation, Jet Aviation, and Signature Flight Support.



±15,600 SF OF HANGAR SPACE AND ±836 SF OF OFFICE/STORAGE SPACE AT

Van Nuys Airport

KATRIN M. GIST

First Vice President | CA Lic. 01928732

National Lead | CBRE Airport Properties

+1 206 947 1399 | katrin.gist@cbre.com

CBRE, INC.

234 S. Brand Boulevard | Suite 800

Glendale, CA 91204