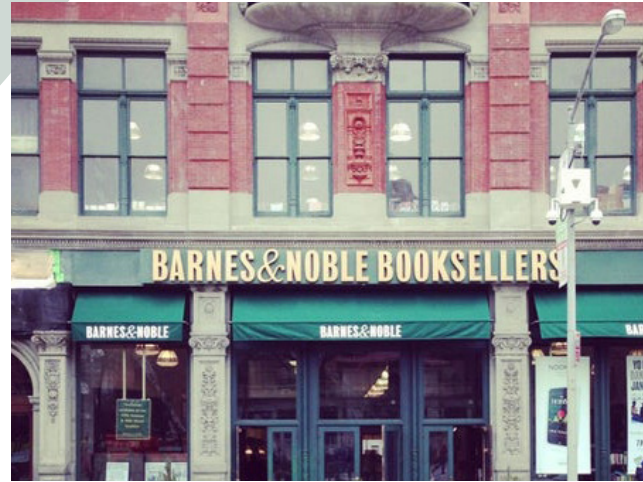


24 UNION SQUARE EAST

BIG RETAIL OPPORTUNITY

10,000 - 40,000 SF across from Union Square Park





BUSY LOCATION

Traffic and Demographics

383,000 people walk through Union Square daily

230,000 residents within a one-mile radius with a median household income of \$1.03 million

90,000 students attend area universities

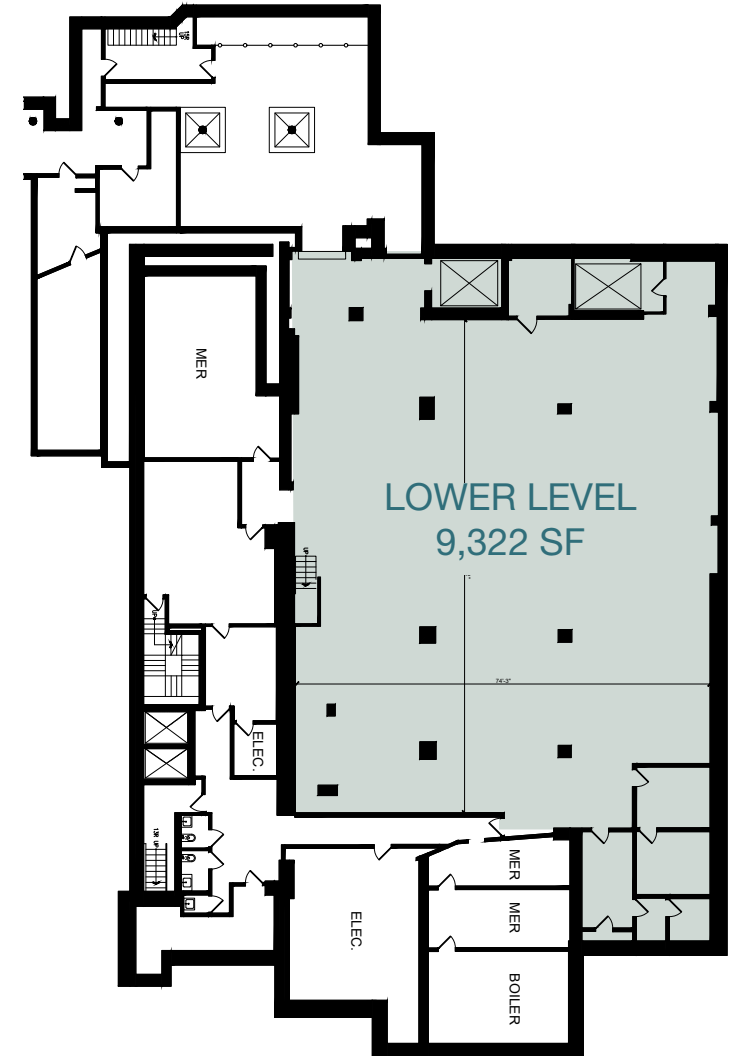
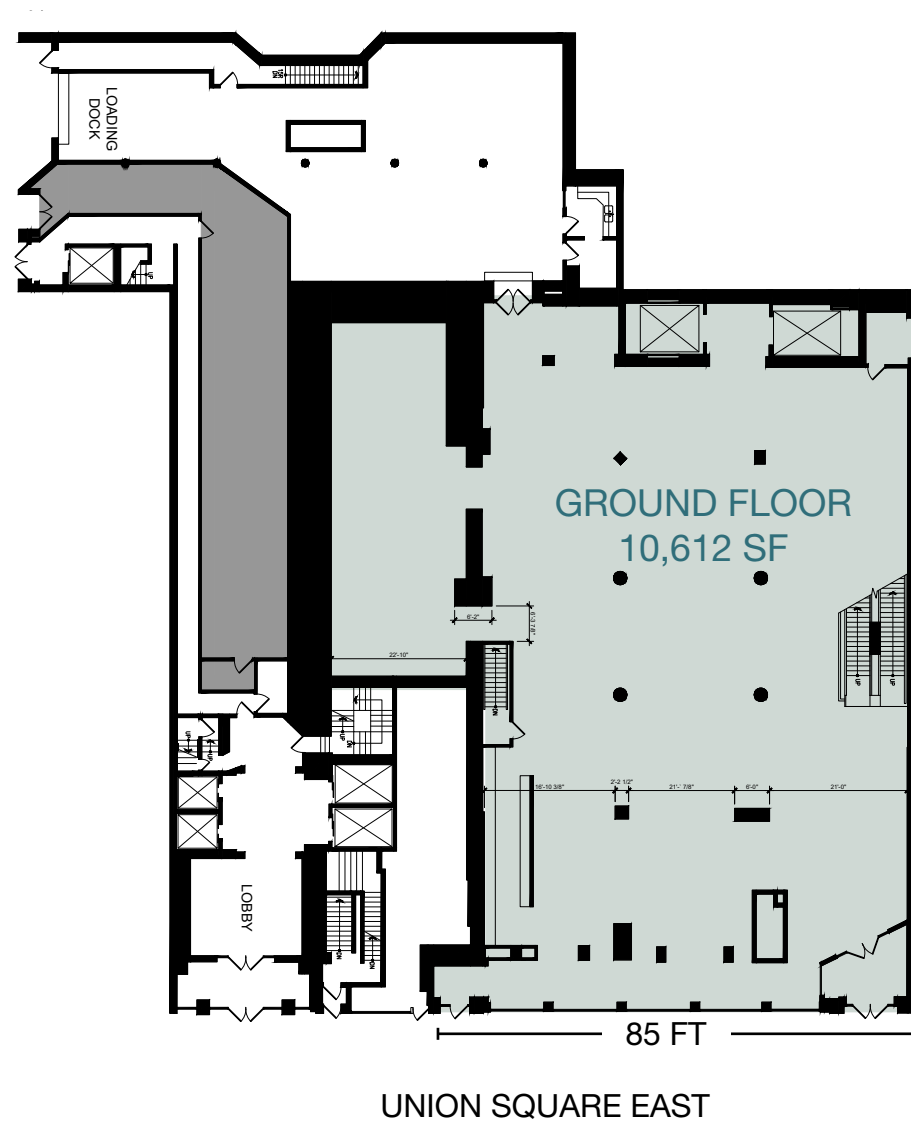
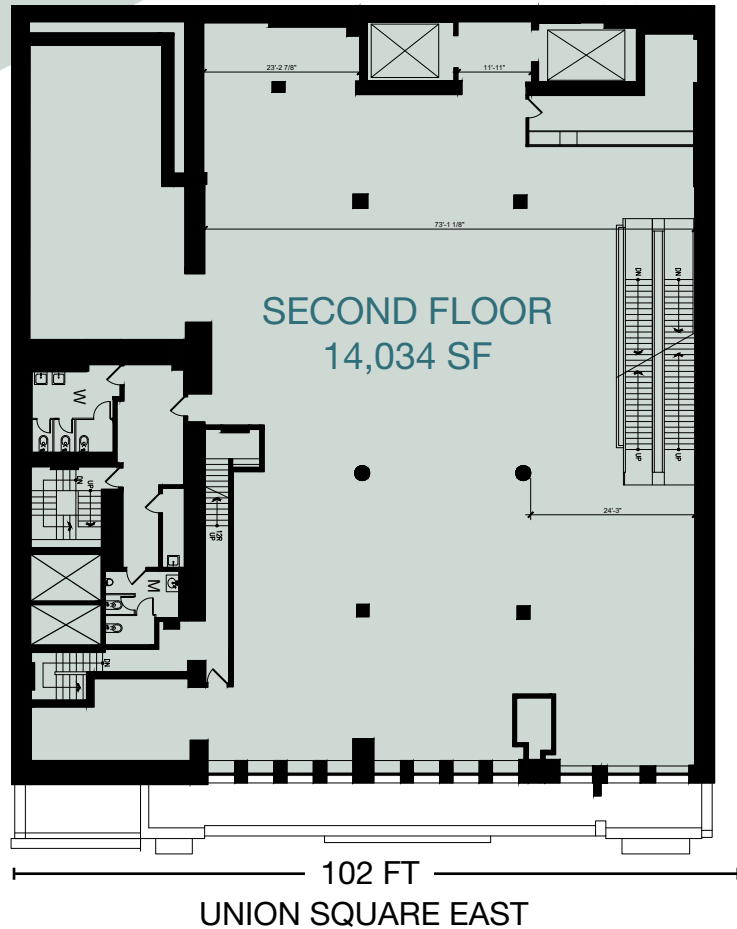
Union Square subway annual ridership exceeds 35.3 million, the 4th busiest transit hub in NYC

Over 27.5 million RSF of office space with 153,000 employees

Corporate Neighbors



EXISTING LAYOUT



BE A BIG PART OF IT



Approximate Size (Divisible)

Ground Floor 10,612 SF
 Second Floor 14,034 SF
 Lower Level 9,322 SF

**Can add an additional 13,559 SF on the Third Floor*

Frontage

Ground Floor 85 FT
 Second Floor 102 FT

Features

Vertical transportation in place

Direct access to loading dock from East 16th Street

Next door to the Daryl Roth Theater, an off-Broadway venue with 500-person capacity

Petco is relocating its flagship to Union Square East and East 17th Street

Retail Leasing Contacts

Jeffrey D. Roseman
 212-372-2430
 jeffrey.roseman@nrmk.com

Drew Weiss
 212-372-2473
 drew.weiss@nrmk.com

NEWMARK

nrmk.com

The information contained herein has been obtained from sources deemed reliable but has not been verified and no guarantee, warranty or representation, either express or implied, is made with respect to such information. Terms of sale or lease and availability are subject to change or withdrawal without notice.