

# TIMES SQUARE

NEW RESTAURANT OPPORTUNITY STEPS FROM THE BUSIEST CORNER IN THE WORLD



47TH AT SEVENTH AVENUE





# ADJACENT NEIGHBORS

TKTS BOOTH/DUFFY SQUARE  
47TH & SEVENTH



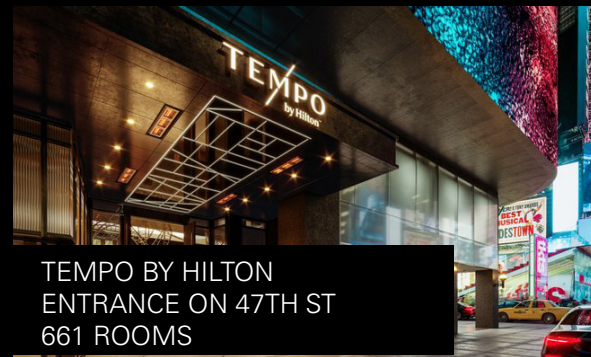
EDITION HOTEL  
ENTRANCE ON 47TH ST  
452 ROOMS



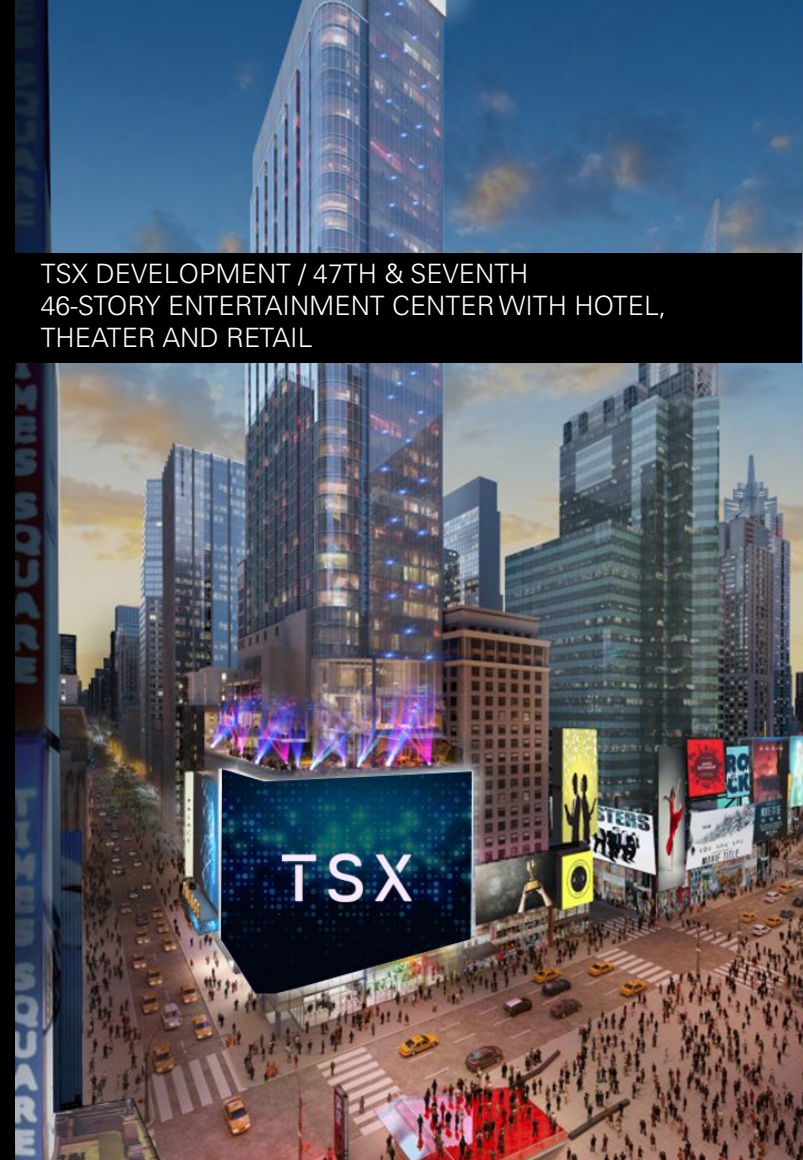
RIU PLAZA HOTEL  
145 W 47TH ST  
600 ROOMS



TEMPO BY HILTON  
ENTRANCE ON 47TH ST  
661 ROOMS



TSX DEVELOPMENT / 47TH & SEVENTH  
46-STORY ENTERTAINMENT CENTER WITH HOTEL,  
THEATER AND RETAIL



(NEW) PALACE THEATRE  
ENTRANCE ON 47TH ST

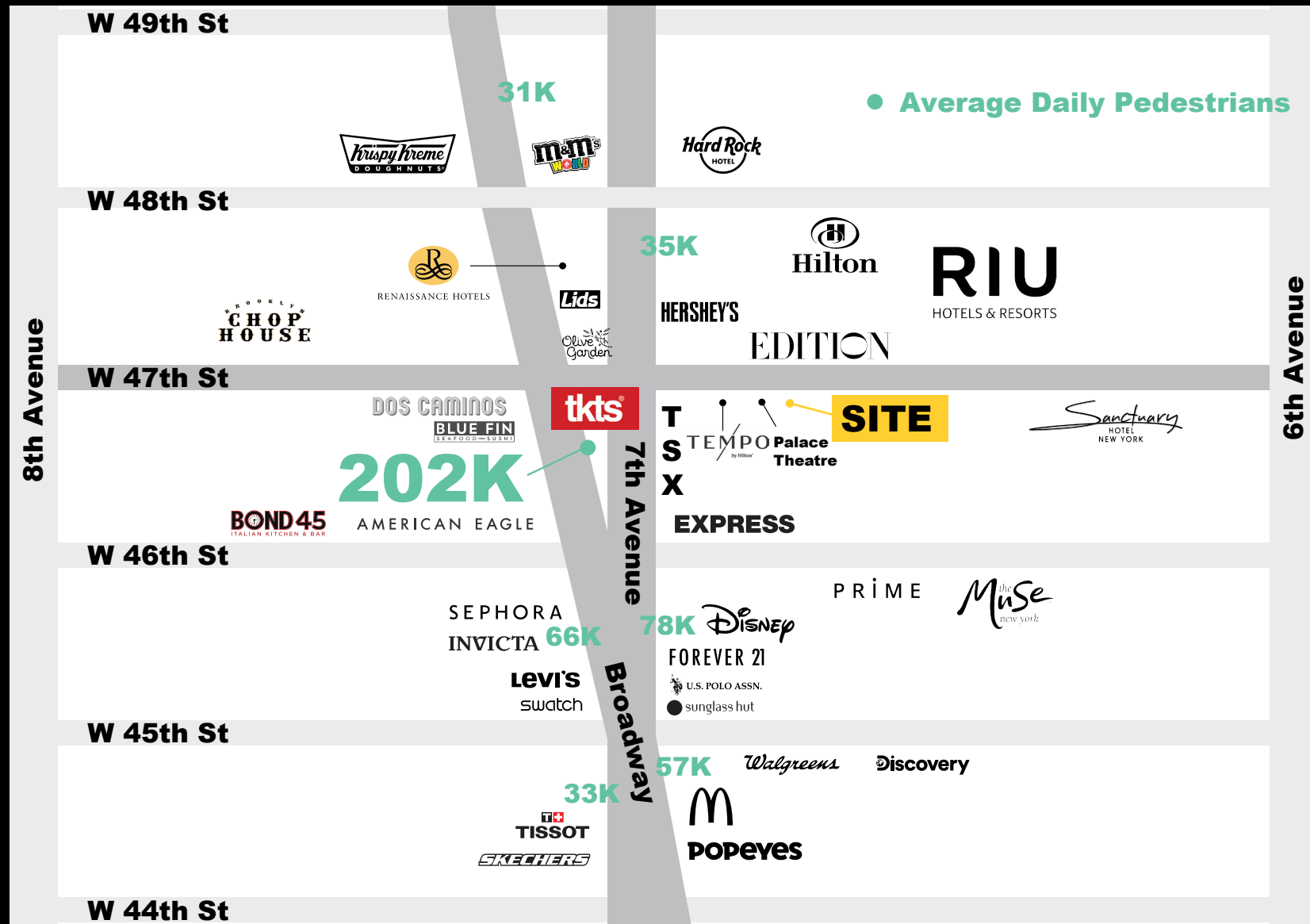




# FANTASTIC **SIGNAGE** AND **VISIBILITY** WITH NEW ILLUMINATED **MARQUEE** SIGN

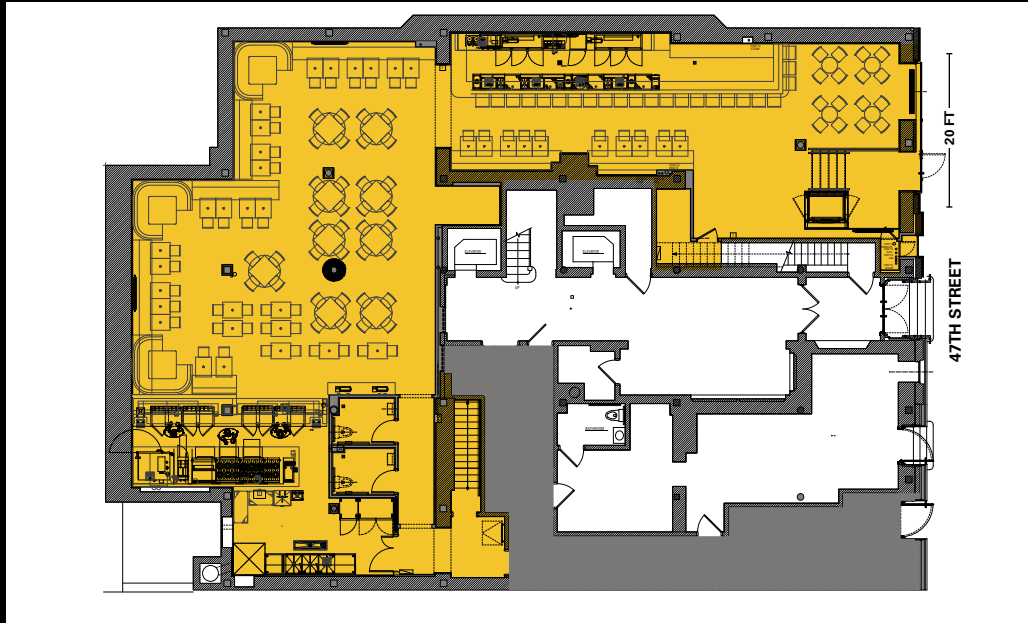


# BUSIEST LOCATION IN TIMES SQUARE

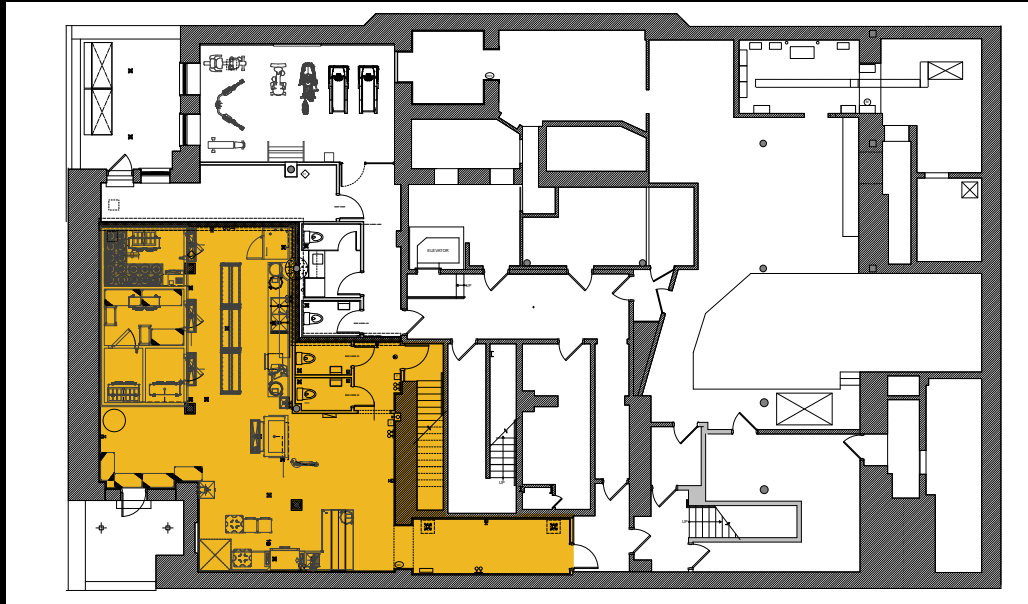




## GROUND FLOOR



## LOWER LEVEL



# NEWMARK

# THE DETAILS

150 WEST 47TH STREET  
between Sixth and Seventh Avenues

Ground Floor      3,822 SF  
Lower Level        1,616 SF

20 FT of all-glass frontage with large illuminated marquee sign above storefront  
Space will be delivered with new storefront, signage and venting in place

Situated on the same block as several major hotels including the Edition, Tempo by Hilton (coming soon), The Sanctuary, Oyo, Riu Plaza and Night Times Square Hotels

Next door to the entrance of the new Palace Theatre at the TSX development

Steps from Duffy Square and the TKTS booth, one of the most visited tourist attractions in all of New York City

### Contacts

Jeffrey D Roseman  
t 212-372-2430  
jeffrey.roseman@nrmk.com

Drew Weiss  
t 212-372-2473  
drew.weiss@nrmk.com

Jeremy Tucker  
t 516-712-5383  
jeremy.tucker@nrmk.com