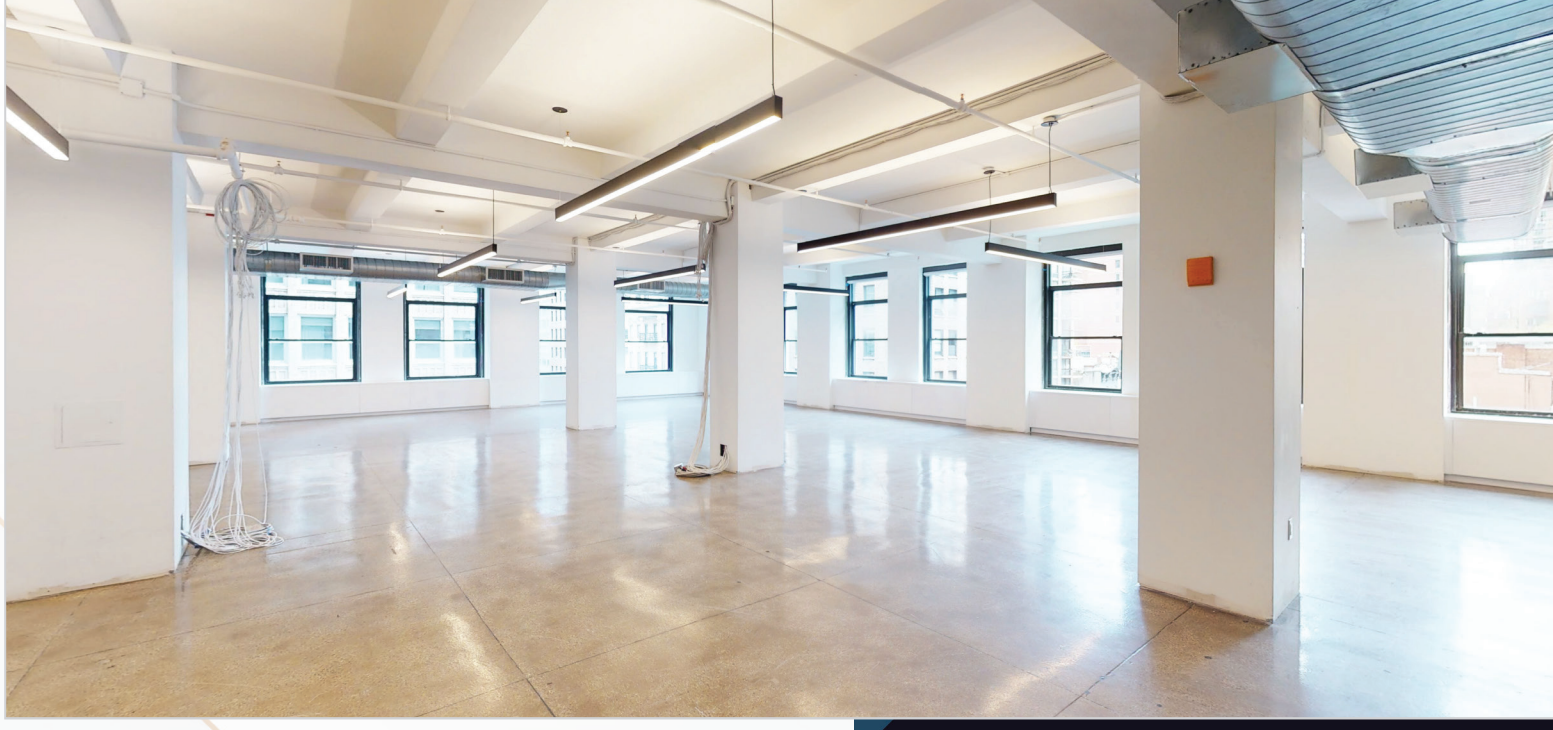
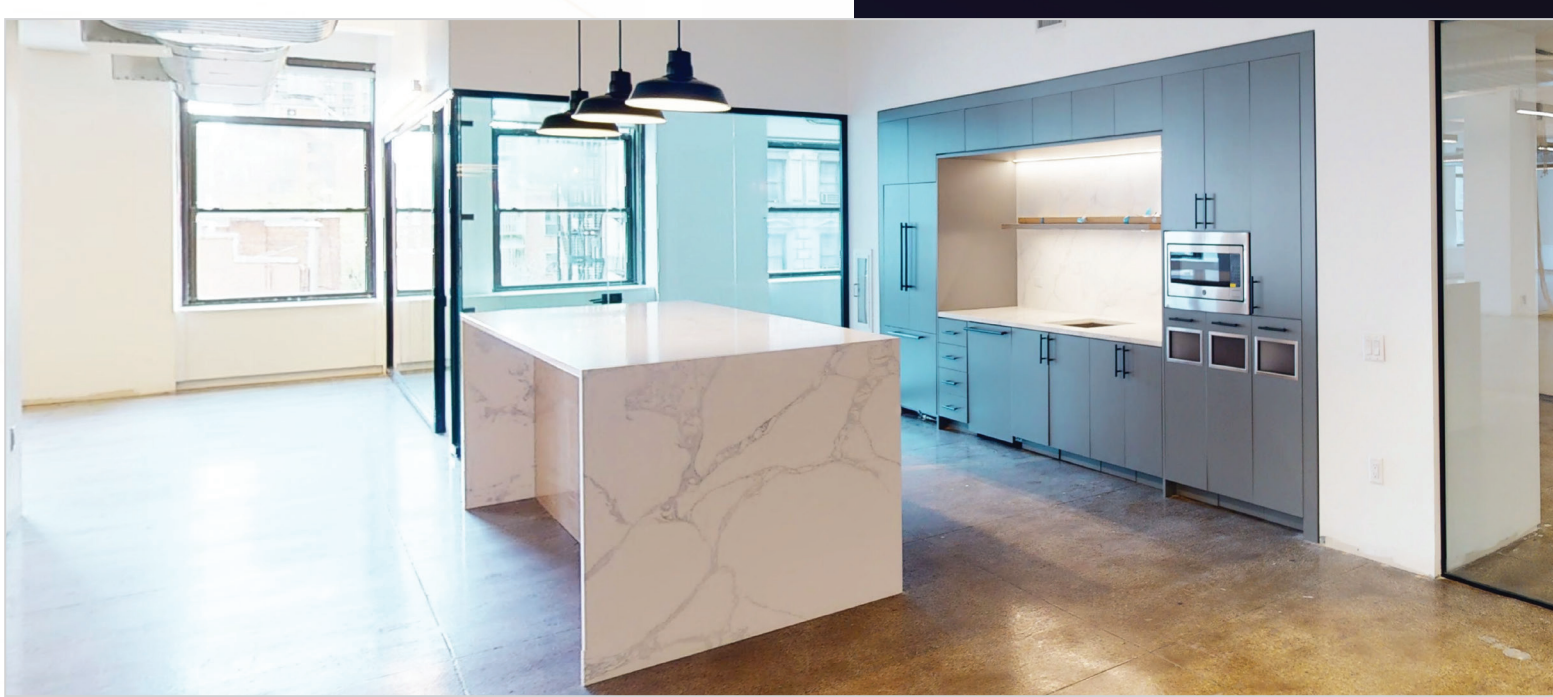


NEWMARK

49 WEST 37TH STREET

FULL FLOORS UP TO
11,000 RSF

CONTEMPORARY BUILDING
STANDARD FINISHES



49 WEST 37TH STREET

SPACE AVAILABILITIES

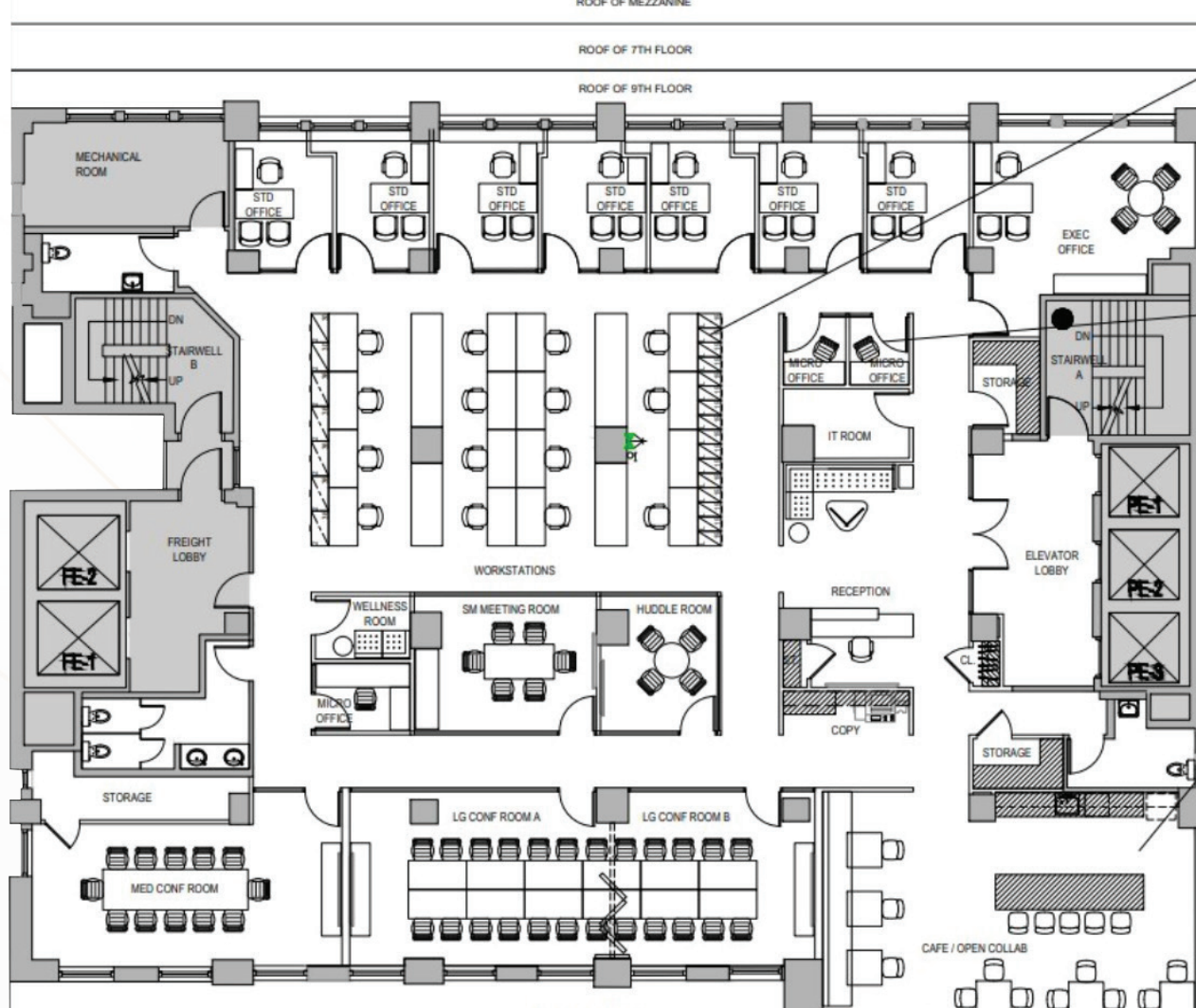
ENTIRE 3RD FLOOR
11,000 RSF

ENTIRE 11TH FLOOR
11,000 RSF

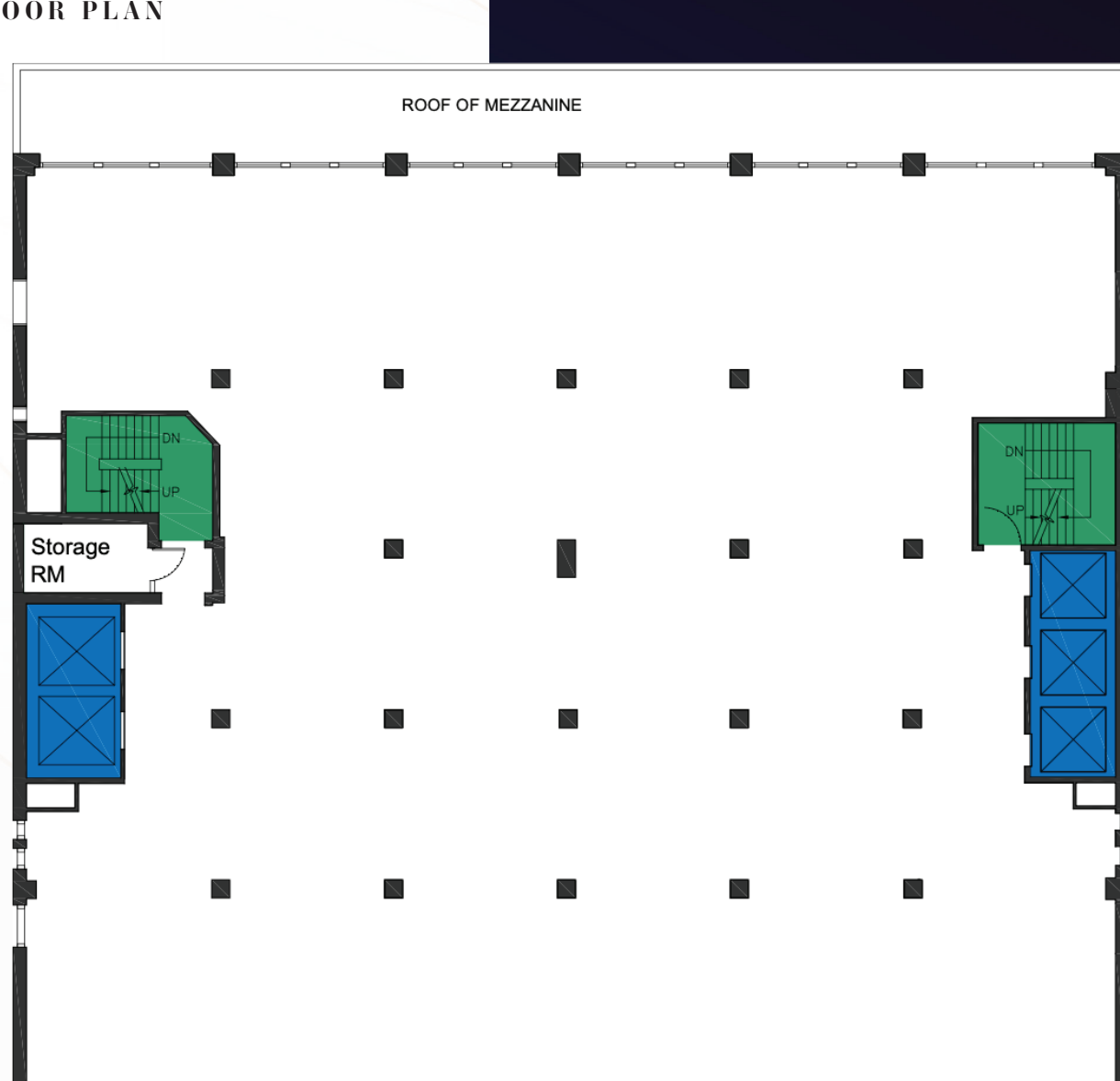
- Located Between Fifth & Sixth Avenues
- Efficient Floor Plates
- Open Collaborative Pantry and Lounge Space Opportunity
- Proximity to Penn Station, Bryant Park, & Grand Central
- Full Floors up to 11,000 RSF
- Contemporary Building Standard Finishes
- Potential Opportunity for Ownership to Furnish
- Tenant Controlled HVAC
- Reasonable Divisions Considered

49 WEST 37TH STREET

ENTIRE 3RD & 11TH FLOOR | 11,000 RSF
TEST-FIT FLOOR PLAN



ENTIRE 3RD & 11TH FLOOR | 11,000 RSF
CORE & SHELL FLOOR PLAN



49 WEST 37TH STREET



49 WEST 37TH STREET

FOR MORE INFORMATION CONTACT

BRETT HARVEY
212-372-2099
brett.harvey@nrmk.com

ADAM SPECTOR
212-372-0769
adam.spector@nrmk.com

JENNIFER SCHREIBER
212-372-0715
jennifer.schreiber@nrmk.com

NATALIE SERIO
212-331-0123
natalie.serio@nrmk.com

The information contained herein has been obtained from sources deemed reliable but has not been verified and no guarantee, warranty or representation, either express or implied, is made with respect to such information. Terms of sale or lease and availability are subject to change or withdrawal without notice.

©2024 Newmark. All Rights Reserved.