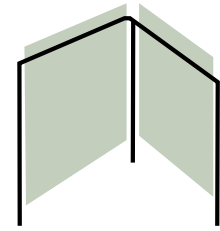


CBRE



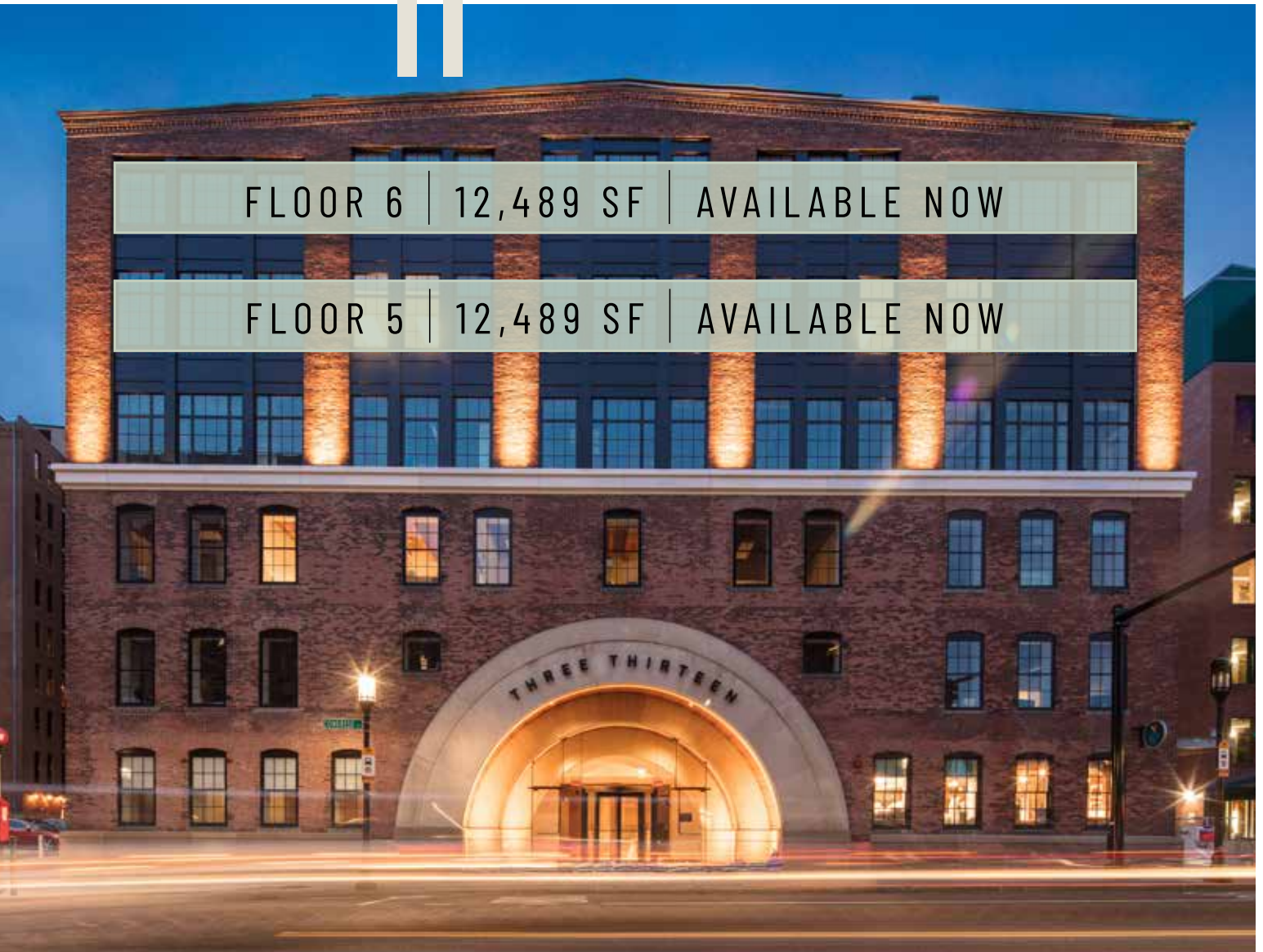
313 Congress

**PART OF THE BRICKS
AT FORT POINT**

FORT POINT |
BOSTON, MA

FLOOR 6 | 12,489 SF | AVAILABLE NOW

FLOOR 5 | 12,489 SF | AVAILABLE NOW



12,489-24,978 SF
AVAILABLE

Top Two Floors Available

AVAILABLE NOW



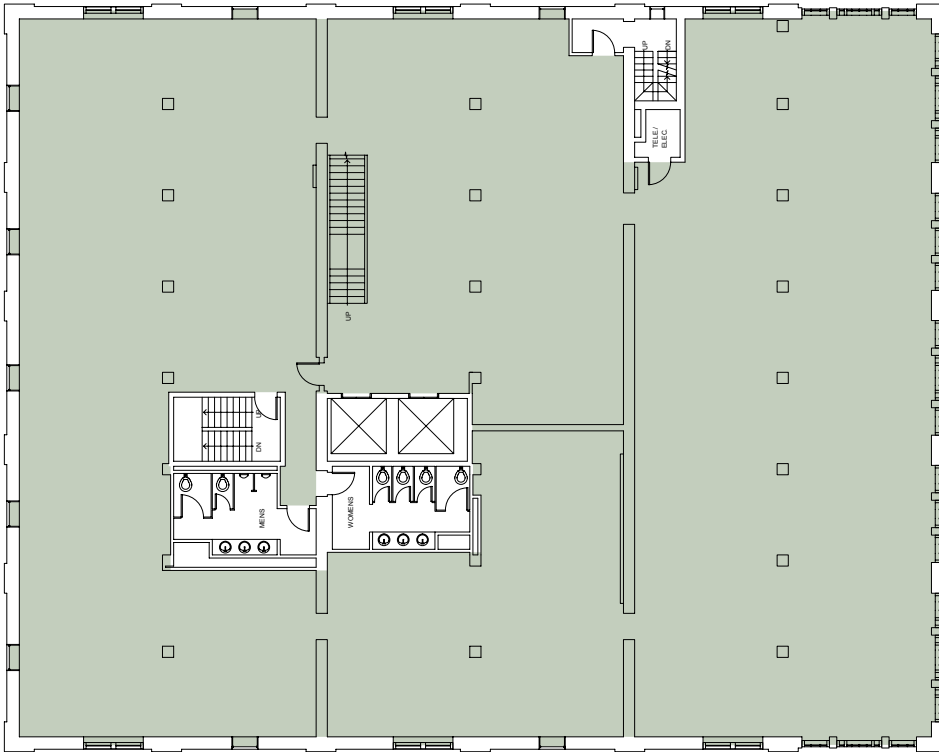
Available

- Classic brick & beam building
- Ample natural light
- Internal staircase connecting the floors
- Amenity-rich neighborhood
- In the heart of the Fort Point District
- Ideal location for commuters



Photos are of a completed spec suite in the building.

Shell & Core



**VIEW ON VTS
5th Floor**

Hypothetical Test Fit



**VIEW ON VTS
6th Floor**



Leasing Contact Information

SUZANNE BROWN

+1 617 912 6931

suzanne.brown@cbre.com

KEVIN KENNEDY

+1 617 912 7058

kevin.kennedy@cbre.com

JON FRENI

+1 617 912 7044

jonathan.freni@cbre.com



© 2024 CBRE, Inc. This information has been obtained from sources believed reliable. We have not verified it and make no guarantee, warranty or representation about it. Any projections, opinions, assumptions or estimates used are for example only and do not represent the current or future performance of the property. You and your advisors should conduct a careful, independent investigation of the property to determine to your satisfaction the suitability of the property for your needs. Photos herein are the property of their respective owners and use of these images without the express written consent of the owner is prohibited. CBRE and the CBRE logo are service marks of CBRE, Inc. and/or its affiliated or related companies in the United States and other countries. All other marks displayed on this document are the property of their respective owners.