

FOR SALE/LEASE

10118 SWENSON WAY

DELTA, BRITISH COLUMBIA

CBRE

THE
INDUSTRIAL
SPECIALISTS

58,811 SF Warehouse with 9 Dock & 2 Grade Loading Doors





Building Size - 58,811 SF

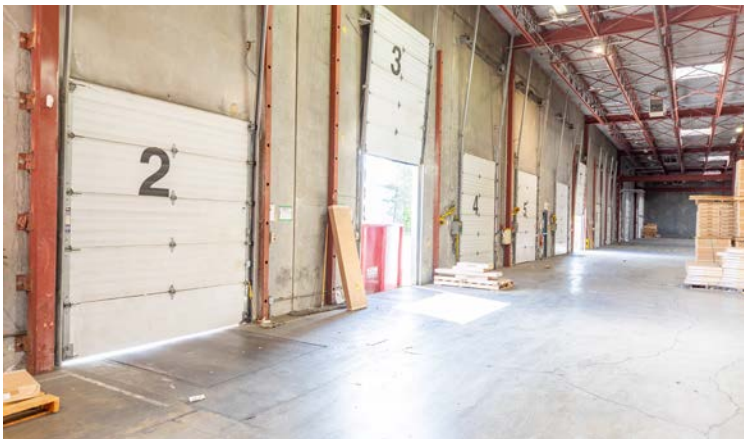
GROUND FLOOR OFFICE AREA	3,040 SF
WAREHOUSE AREA	55,771 SF
<hr/>	
TOTAL AREA	58,811 SF

Features

- Excellent exposure along Nordel Way and Swenson Way with quick access to the SFPR
- 347/600 volt, 400 amp, 3 phase electrical service
- Fully sprinklered
- Fenced and paved yard
- Ample truck maneuvering room at rear loading area
- Large warehouse skylights for plenty of natural light
- Professionally built and managed by Beedie Development Group

Property Details

ZONING	I2 - Medium impact Industrial
LOADING DOORS	9 dock and 2 grade
CEILING HEIGHT	24' clear
SITE SIZE	2.99 acres
PARKING	39 parking stalls
SALE PRICE	\$32,346,050 (\$550 PSF)
BASIC RENT	Contact Listing Agents
ADDITIONAL RENT	\$5.66 PSF
AVAILABILITY	Immediately



10118 SWENSON WAY DELTA, BRITISH COLUMBIA

Positioned at 7978 82nd Street, this property offers exceptional access to Highway 17, Highway 91, and Highway 99, just 3 minutes from the Tilbury Connector. This prime location ensures efficient routes to Metro Vancouver, the US border, YVR Airport, Deltaport, and the Tsawwassen Ferry Terminal.

With Downtown Vancouver, Surrey, and Richmond all within a 25–35 minute drive, this site is perfectly suited for businesses looking to streamline logistics and expand their regional reach.

10118 SWENSON WAY DELTA, BRITISH COLUMBIA



25
MINUTES TO
RICHMOND CC

30
MINUTES TO
SURREY CC

18
MINUTES TO
DELTAPORT

30
MINUTES TO
YVR AIRPORT

Connect with us for more information

Steve Brooke

Personal Real Estate Corporation
Executive Vice President
Industrial Properties Group
604 662 5147
steve.brooke@cbre.com

Joel Barnett

Personal Real Estate Corporation
Executive Vice President
Industrial Properties Group
604 662 5570
joel.barnett@cbre.com

Alex Mei 梅嘉俊

Personal Real Estate Corporation
Vice President
Industrial Properties Group
778 788 3106
alex.mei@cbre.com

Luc Soares

Sales Associate
Industrial Properties Group
778 372 1938
luc.soares@cbre.com

theindustrialspecialists.com
@theindustrialspecialists

Beedie/ **CBRE**

CBRE Limited | 1021 West Hastings Street #2500, Vancouver, BC V6E 0C3 | cbre.ca

This disclaimer shall apply to CBRE Limited, Real Estate Brokerage, and to all other divisions of the Corporation; to include all employees and independent contractors ("CBRE"). All references to CBRE Limited herein shall be deemed to include CBRE, Inc. The information set out herein, including, without limitation, any projections, images, opinions, assumptions and estimates obtained from third parties (the "Information") has not been verified by CBRE, and CBRE does not represent, warrant or guarantee the accuracy, correctness and completeness of the Information. CBRE does not accept or assume any responsibility or liability, direct or consequential, for the Information or the recipient's reliance upon the Information. The recipient of the Information should take such steps as the recipient may deem necessary to verify the Information prior to placing any reliance upon the Information. The Information may change and any property described in the Information may be withdrawn from the market at any time without notice or obligation to the recipient from CBRE. CBRE and the CBRE logo are the service marks of CBRE Limited and/or its affiliated or related companies in other countries. All other marks displayed on this document are the property of their respective owners. All Rights Reserved. Mapping Sources: Canadian Mapping Services canadamapping@cbre.com; DMTI Spatial, Environics Analytics, Microsoft Bing, Google Earth.

JOIN OUR MAILING LIST &
BE THE FIRST TO KNOW!

