

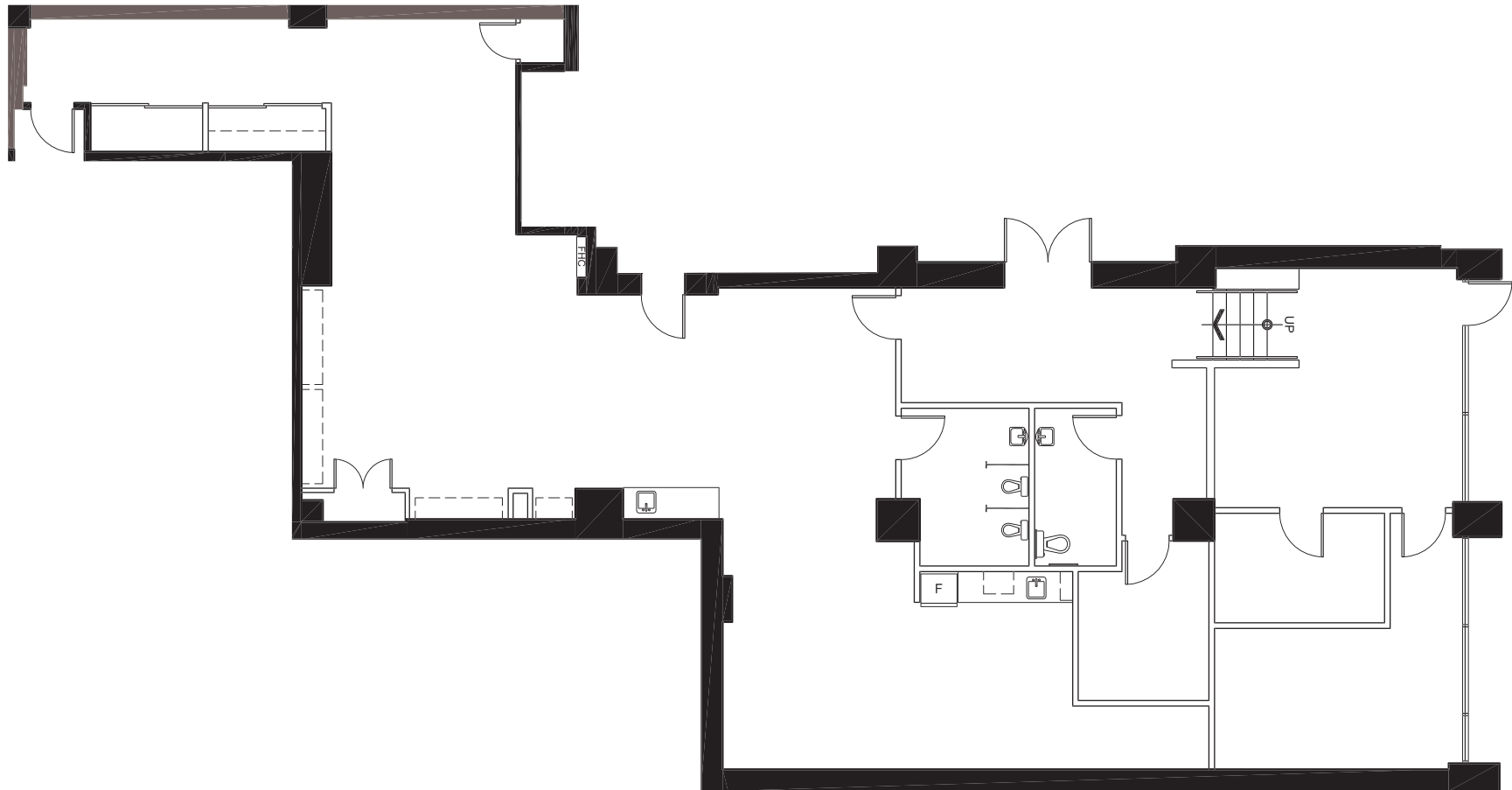
FLOOR PLANS

# 74 Victoria St.

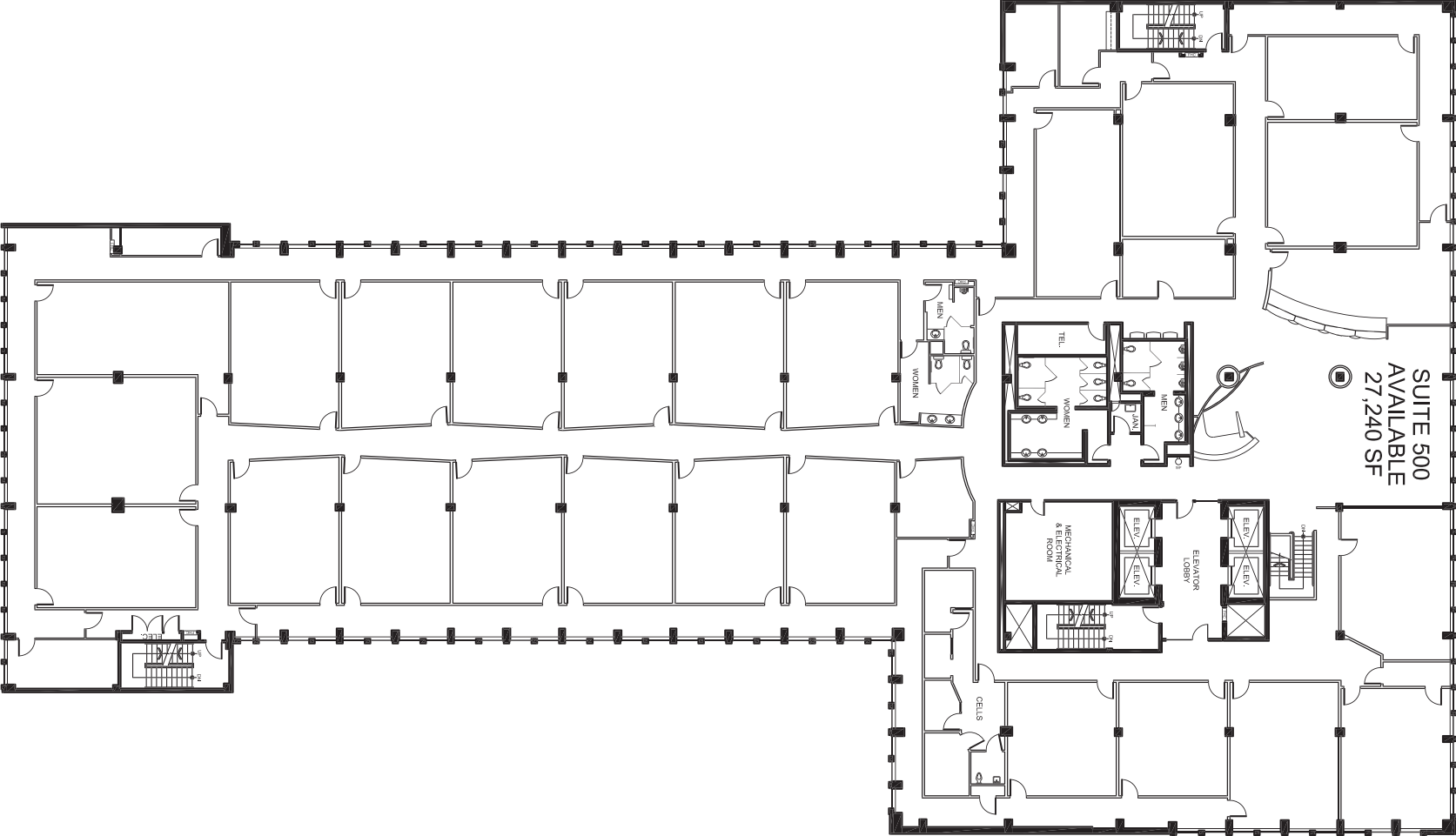
**dream**  + **CBRE**

# Suite 115 – 2,818 SF

Victoria Street-facing studio office or retail space at Adelaide Street.  
Suite built-out with a private office, meeting room and open area.



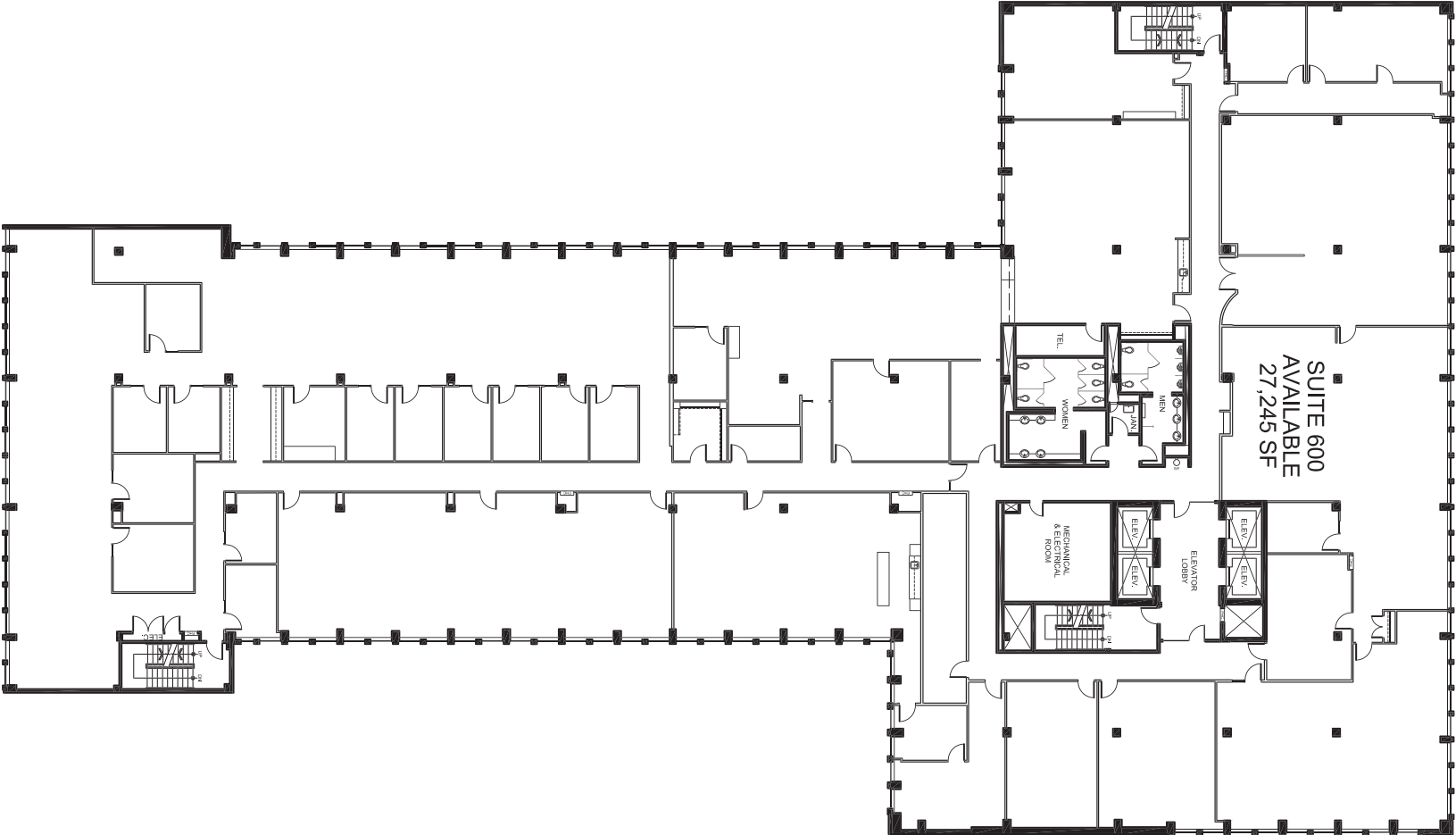
# Suite 500 - 27,240 SF



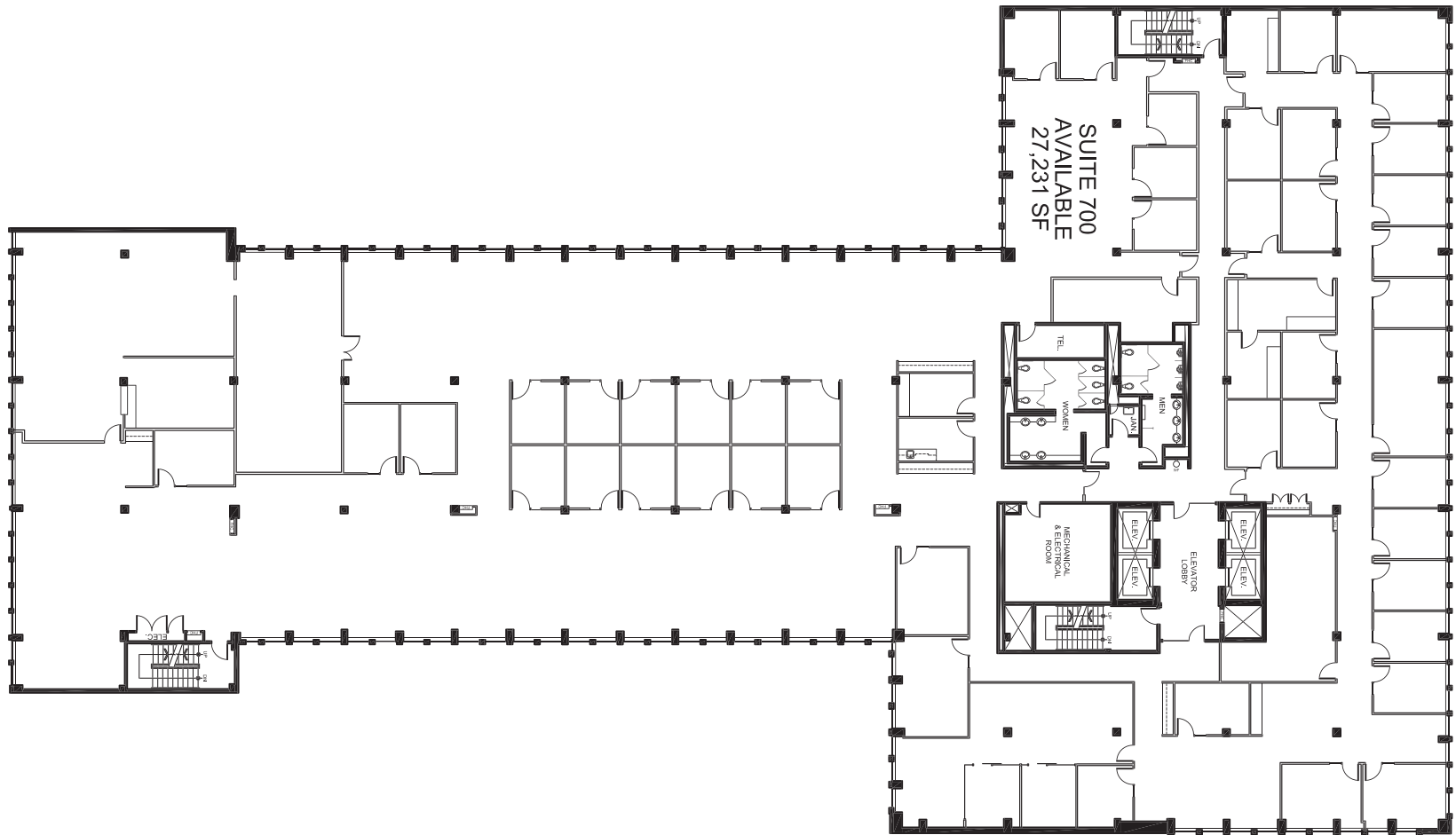
SUITE 500  
AVAILABLE  
27,240 SF



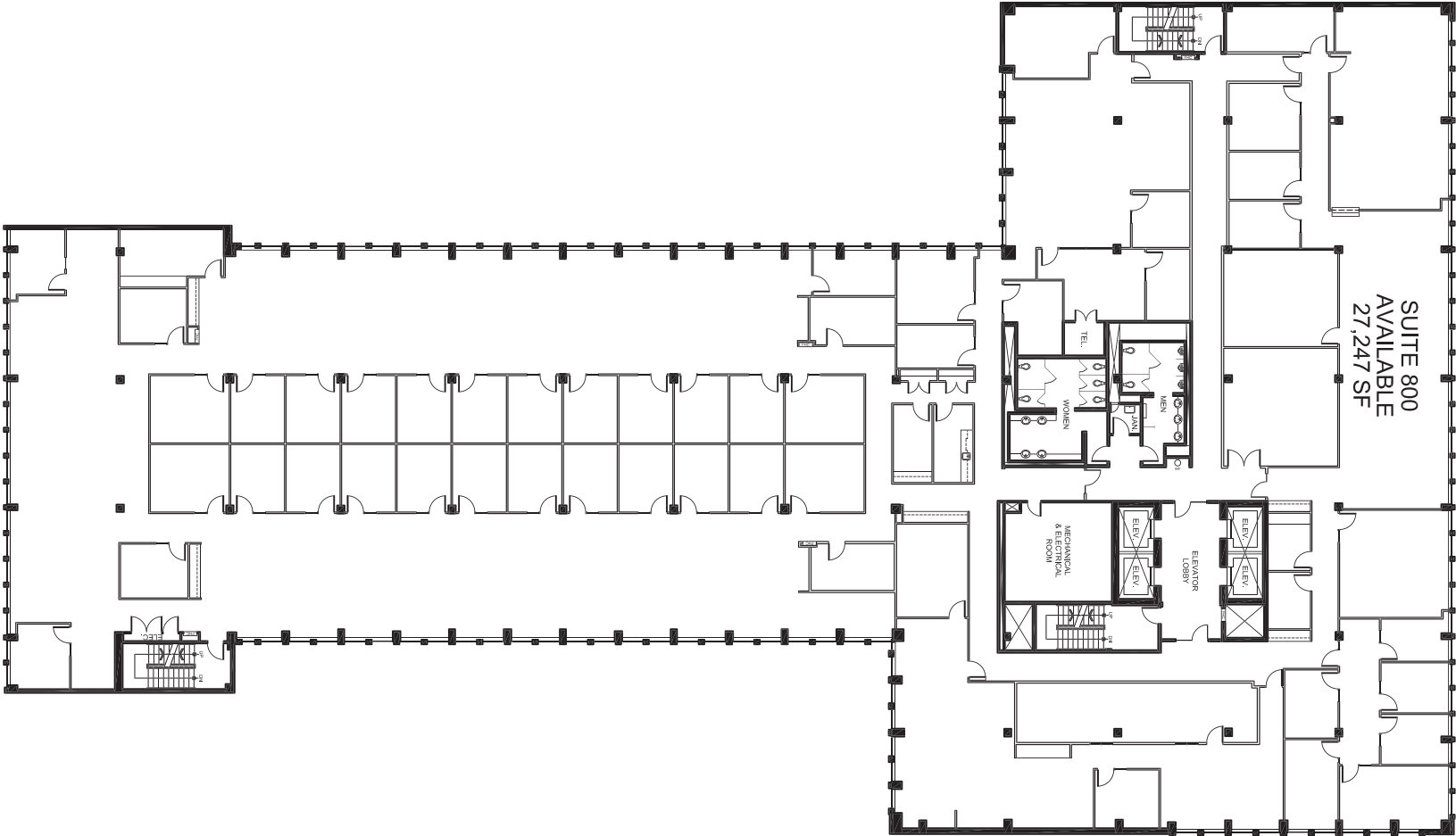
# Suite 600 – 27,245 SF



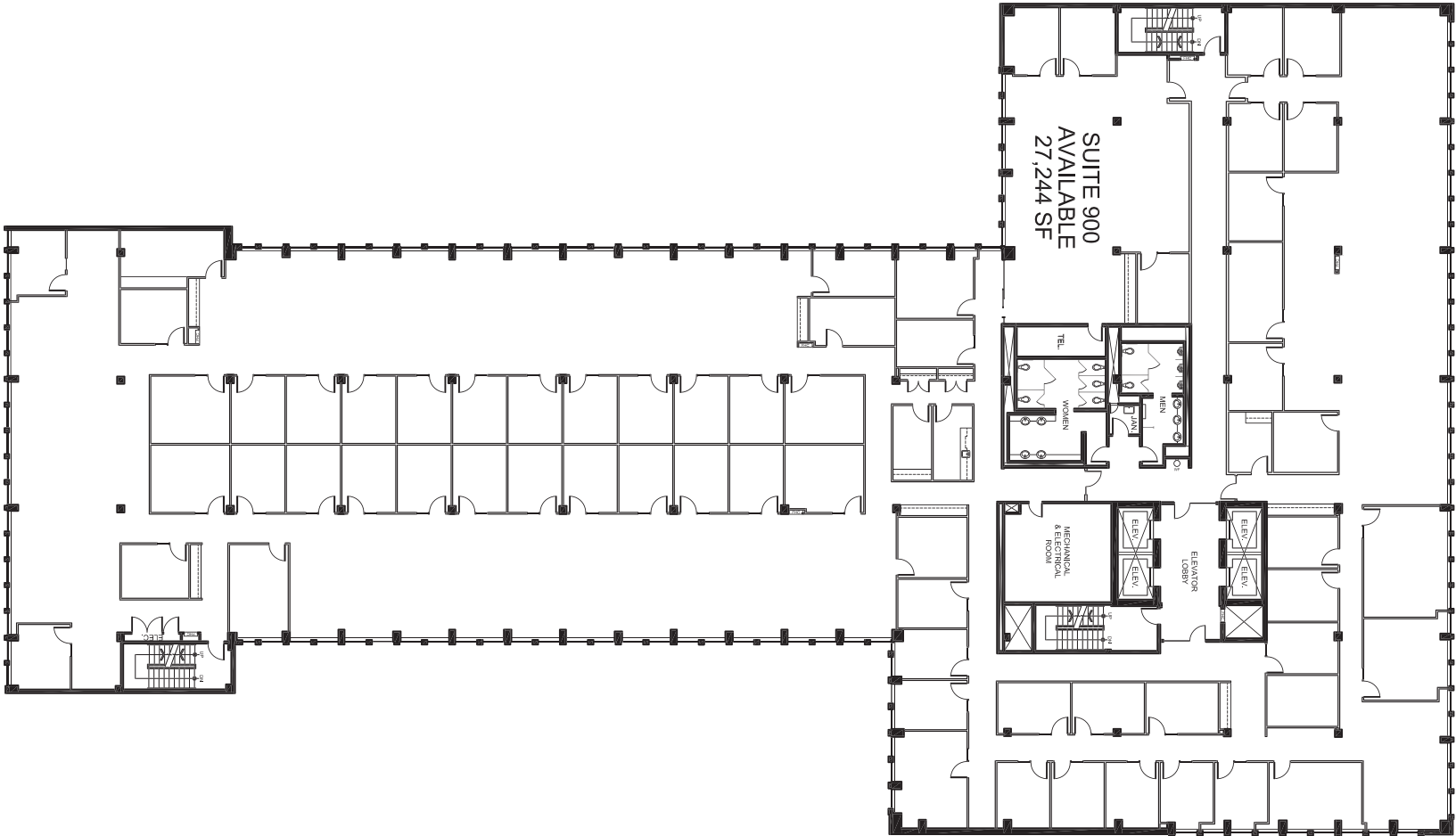
# Suite 700 – 27,231 SF



# Suite 800 – 27,247 SF



# Suite 900 – 27,244 SF



# Suite 1000 – 27,187 SF

