

# GTU JET FACILITIES AT GEORGETOWN, TEXAS

160 TERMINAL DRIVE | GEORGETOWN MUNICIPAL AIRPORT (KGTU)



**4 HANGARS ON A 8.97-ACRE SITE AVAILABLE FOR SALE**

**CBRE**

# THE OFFERING

## OVERVIEW

CBRE is pleased to offer this unique opportunity to purchase four aircraft hangars at the Georgetown Municipal Airport (KGTU). GTU Jet currently operates the facilities and provides full service FBO amenities, including fuel sales. The site is ideal for an FBO operation, and is also well suited for a variety of aviation venues including aircraft services, maintenance and charter operations. The owner has a preference to sell the facilities to a single party.

## ABOUT GTU JET



GTU Jet provides first class FBO service to its customers and has an excellent reputation. Numerous amenities on-site include the following:

- NATA Safety 1st Certified Line Service Crew
- Hangar Space
- Limo/Taxi Arrangements
- Enterprise Rental Cars on-site
- Avis & Hertz Rental Cars Available Upon Request
- Hotel Arrangements
- Flight Planning Station
- WSI Pilotbrief Optima
- GPU Services
- Concierge Style Customer Service
- Freshly Made Cookies & Popcorn
- Complimentary Bottled Water
- Starbucks Coffee
- Land Cruiser Courtesy Car
- Pilot Shop
- Pilot's Lounge with Direct TV
- WiFi
- In-flight Catering Arrangements By Request
- Air Traffic Control Tower Open Daily from 7:00 am to 10:00 pm

## THE SITE

Total Ground Lease Area: 8.97 acres  
Gross Building Area: 98,857 square feet

ASKING PRICE



\$4,495,000

# THE AIRPORT



GEORGETOWN  
MUNICIPAL  
AIRPORT (KGTU)

## GEORGETOWN MUNICIPAL AIRPORT (KGTU)

Located in the heart of Georgetown, Texas and along the I-35 corridor, KGTU links the northern gateway cities of Dallas/Fort Worth to the capital of Austin and San Antonio in the south. The airport includes a 5,004 foot long runway serving general and corporate aviation, providing full service amenities, aviation fuel, avionics sales, service, and aircraft maintenance.

# HANGAR 1



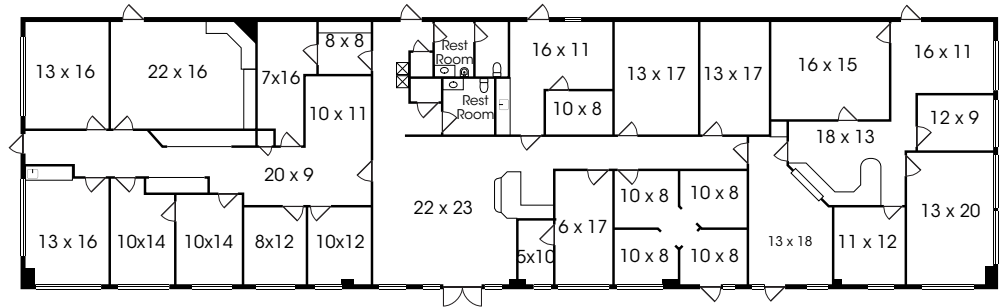
160 TERMINAL DRIVE | 50,057 SF TOTAL | 5.99 ACRES FOR HANGAR 1&2

## FEATURES

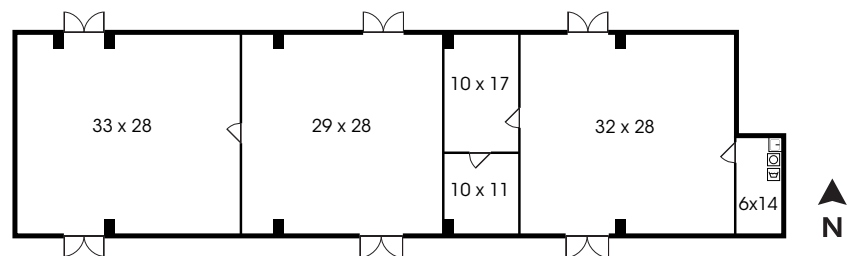
- ±50,057 SF Total
- Built in 2000
- 19' Hangar Door Height
- 6,274 SF of Office
- 7,783 SF Shop Space
- 4,527 SF Mezzanine
- 36,000 SF Hangars



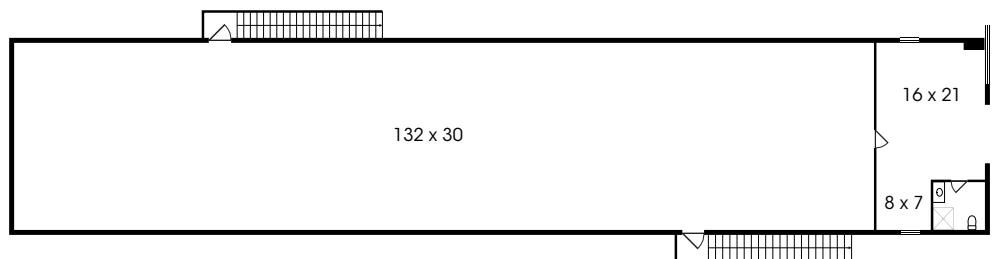
HANGAR 1 FLOOR PLAN



FIRST FLOOR INTERIOR PLAN



SECOND FLOOR INTERIOR PLAN



# HANGAR 2



160 TERMINAL DRIVE | 15,000 SF TOTAL

## FEATURES

- ±15,000 SF Total
- Built in 2009
- Hangar Size: 150' x 100'
- 17' 5" Hangar Opening Height
- No interior finish out, utilities, insulation or hangar door



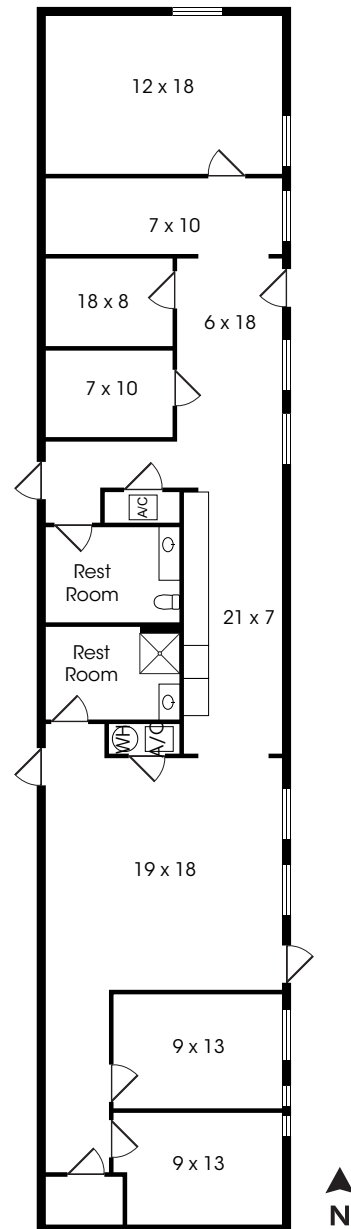
# HANGAR 3



510 SOUTH HANGAR DRIVE | 2.98 ACRES TOTAL GROUND LEASE AREA

## FEATURES

- ±13,800 SF Total
- Built in 2003
- 19'8" Hangar Door Height
- 1,800 SF Office
- 12,000 SF Hangar



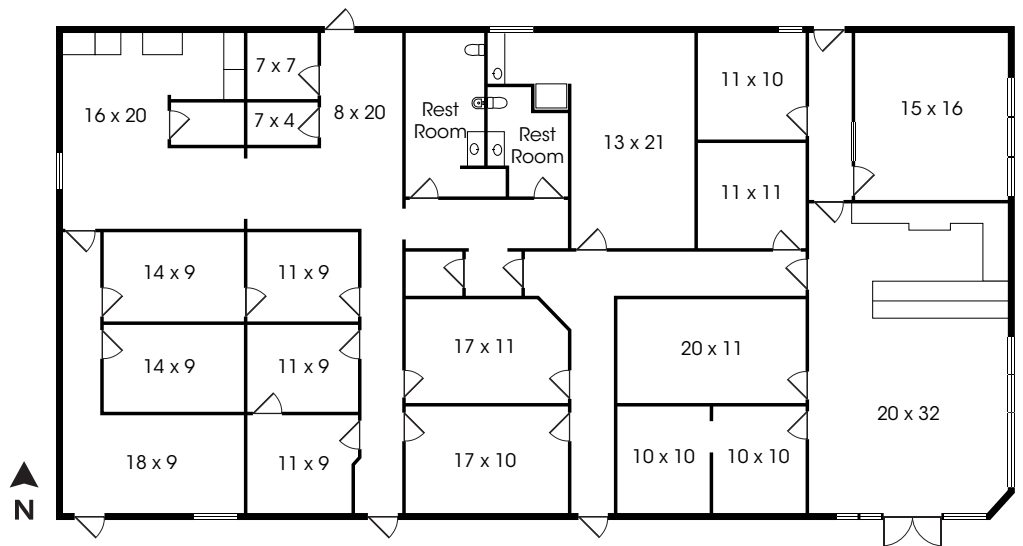
# HANGAR 4



600 SOUTH HANGAR DRIVE | MAIN FBO & LOBBY | 2.98 ACRES TOTAL GROUND LEASE AREA

## FEATURES

- ±20,000 SF Total
- Built in 2003
- 22'4" Hangar Door Height
- 5,000 SF Office
- 15,000 SF Hangar



FOR MORE INFORMATION, CONTACT:

**KATRIN GIST**

National Lead, CBRE Airport Properties  
+1 206 947 1399  
katrin.gist@cbre.com

**W. GLYNN MIRELES**

First Vice President  
+1 281 782 0465  
glynn.mireles@cbre.com

# GTU JET FACILITIES AT GEORGETOWN, TEXAS

160 TERMINAL DRIVE | GEORGETOWN MUNICIPAL AIRPORT (KGTU)



© 2018 CBRE, Inc. All rights reserved. This information has been obtained from sources believed reliable, but has not been verified for accuracy or completeness. You should conduct a careful, independent investigation of the property and verify all information. Any reliance on this information is solely at your own risk. CBRE and the CBRE logo are service marks of CBRE, Inc. All other marks displayed on this document are the property of their respective owners. Photos herein are the property of their respective owners and use of these images without the express written consent of the owner is prohibited. PMStudio\_November 2018

**CBRE**