

FOR LEASE

1 SUITE LEFT, CLASS A OFFICE MARSELLUS COMMONS

101 RICHMOND AVE.
SYRACUSE, NY 13204



PROPERTY SUMMARY

- + Class A office building known as Marsellus Commons
- + Everything is new! State-of-the-art mechanicals, backup generator, key code access
- + 82,553 sq. ft., 6-story completely renovated former Marsellus Casket Company
- + Last suite available: 3,545 rentable sq. ft., 3rd floor
- + Prime corner location with great views
- + Flexible floor plans
- + Ample free parking
- + Located between Erie Blvd. and West Genesee St.
- + Convenient highway access and available public transportation
- + Close to Downtown, hospitals, Armory Square, Franklin Square, Destiny USA and more
- + Tenant signage available



CONTACT EXCLUSIVE AGENT

ED KIESA, CCIM
Senior Broker
+1 315 422 4200
ed.kiesa@cbre-syr.com

CBRE | SYRACUSE
Nettleton Commons
313 E. Willow St., Ste. 202
Syracuse, NY 13203



www.cbre.com/syracuse

CBRE | Syracuse

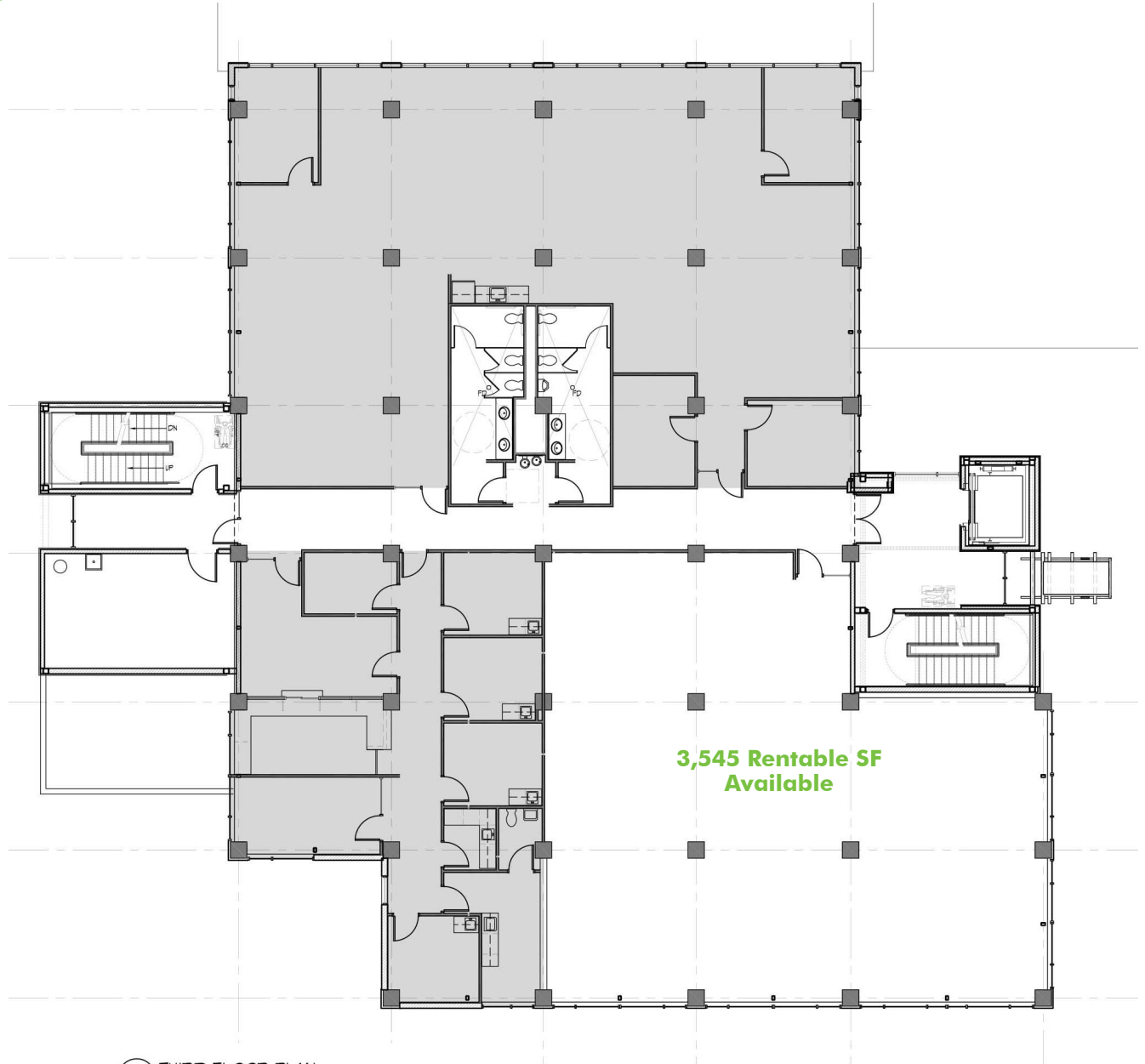
Part of the CBRE affiliate network

FOR LEASE
MARSELLUS COMMONS

101 RICHMOND AVE.
SYRACUSE, NY 13204



FLOOR PLAN - **THIRD FLOOR**



3,545 Rentable SF Available



© 2018 CB Richard Ellis/Syracuse, N.Y., LLC. All rights reserved. This information has been obtained from sources believed reliable, but has not been verified for accuracy or completeness. You should conduct a careful, independent investigation of the property and verify all information. Any reliance on this information is solely at your own risk. Photos herein are the property of their respective owners. Use of these images without the express written consent of the owner is prohibited.



Part of the CBRE affiliate network