

F O R L E A S E

30 WINTER STREET

Office Space 6,465 & 9,095 SF / Boston, MA 02108



PROPERTY SPECIFICATION

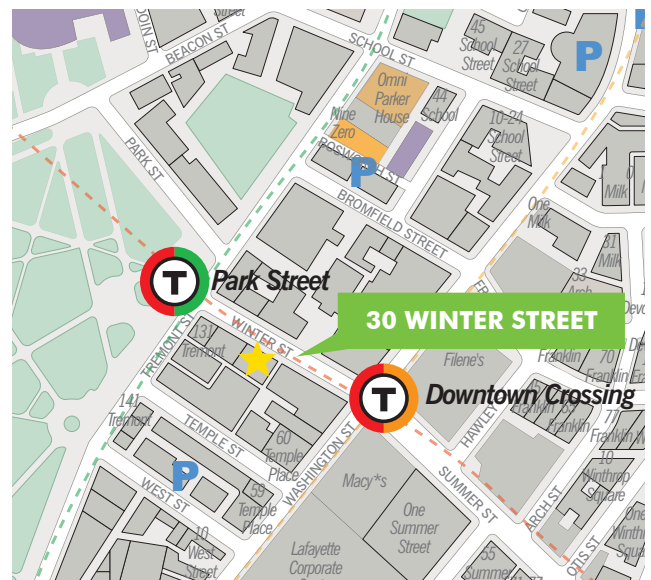
Located in the vibrant Downtown Crossing area and equidistant from both the Downtown Crossing and Park Street MBTA Stations, 30 Winter Street is a 12-story building consisting of approximately 85,000 SF. The modern-style building offers an abundance of natural light and the area provides unmatched amenities.

Features

- New building lobby
- Lobby attendant
- Full floor opportunities
- Furniture available on the third floor
- Great MBTA access
- Steps from all Downtown Crossing amenities

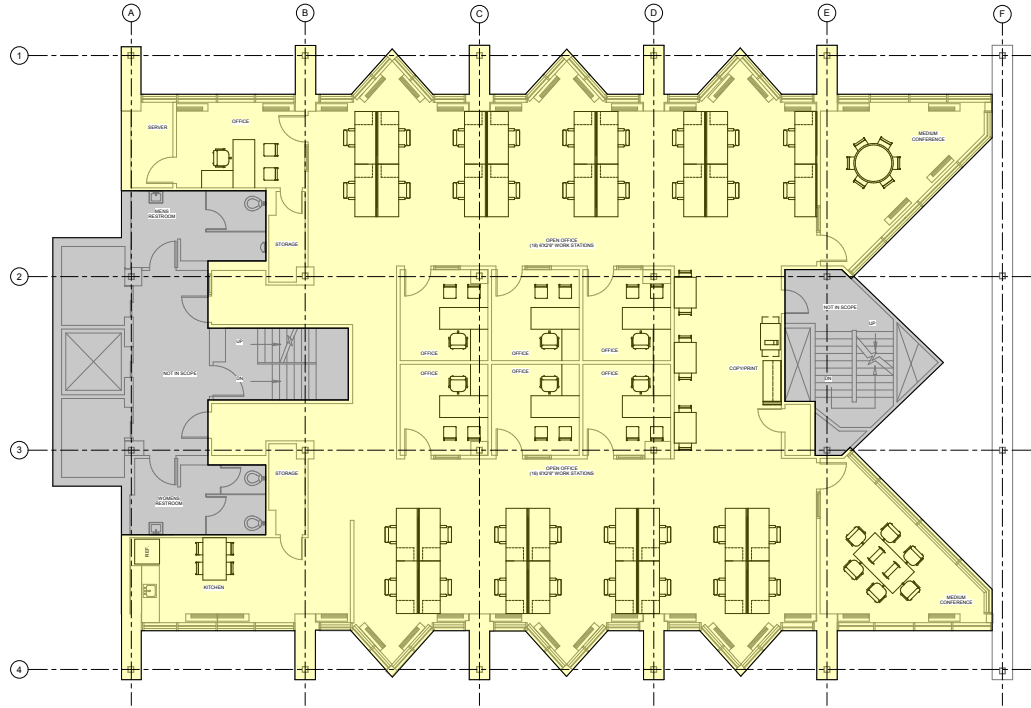
Availability

Space	Size	Available
3rd	6,465 SF	1/1/2020
6th	9,095 SF	1/1/2020

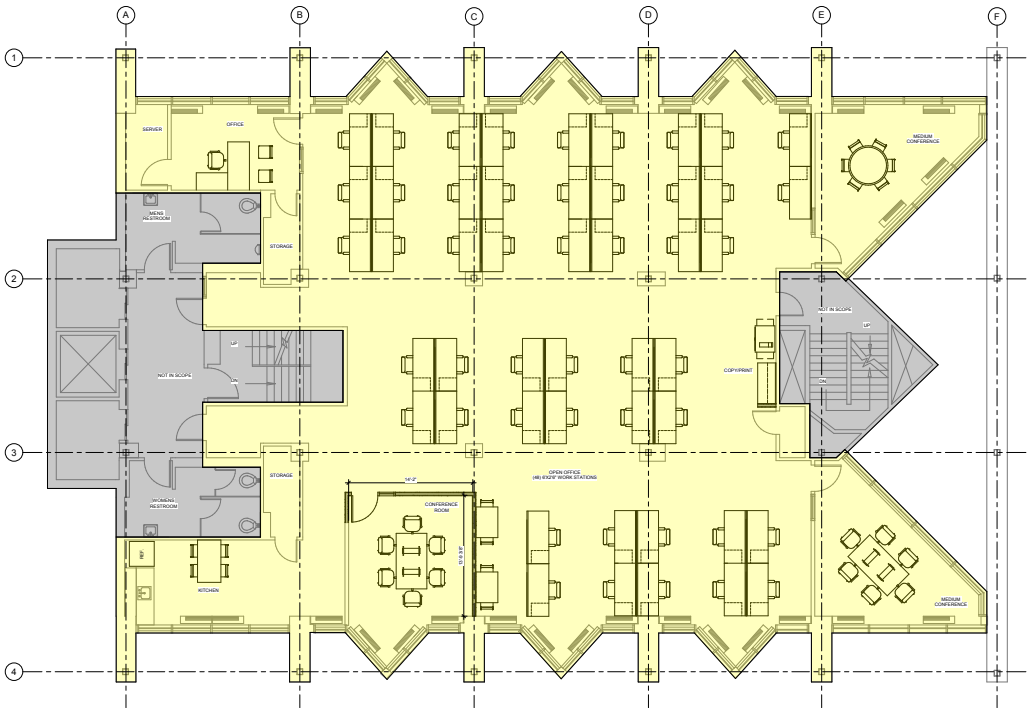


3RD FLOOR 6,465 SF

AS
BUILT

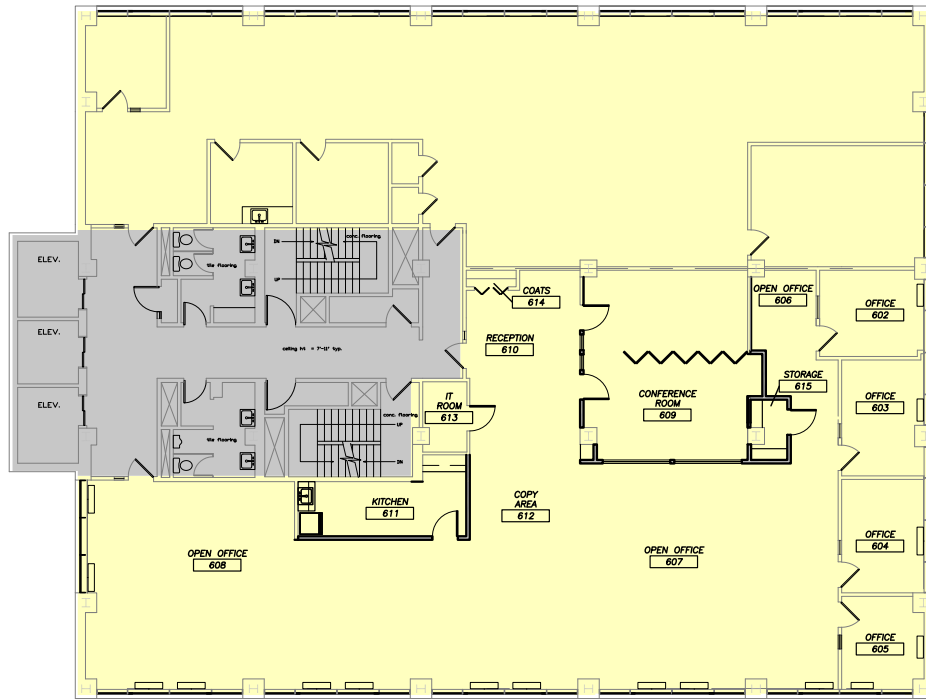


TEST
FIT

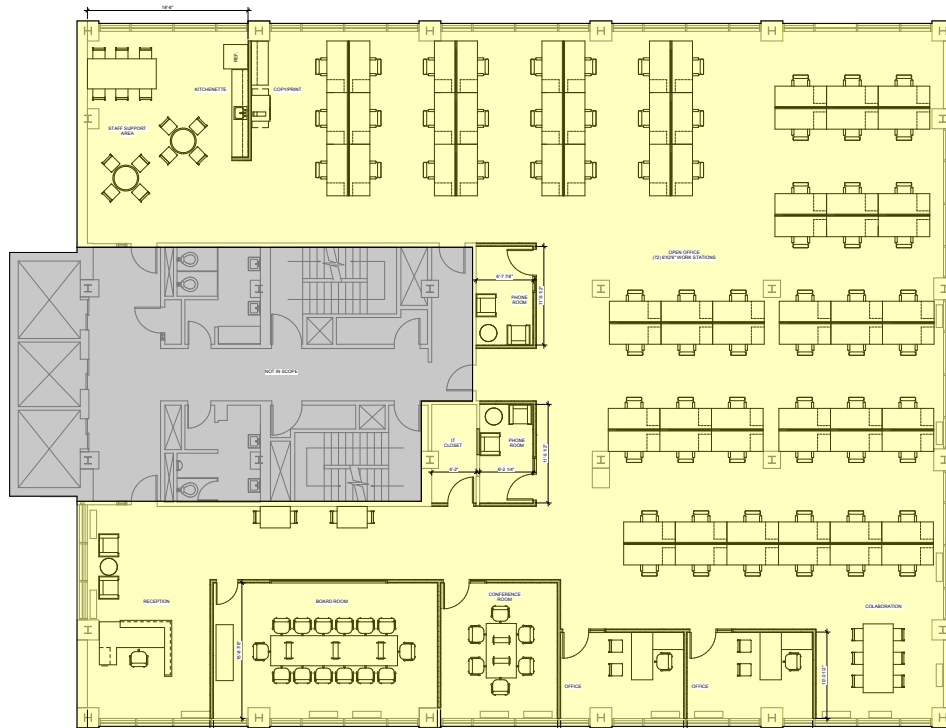


6TH FLOOR 9,095 SF

AS
BUILT



TEST
FIT



30 WINTER STREET

Office Space 6,465 & 9,095 SF / Boston, MA 02108

PLEASE CONTACT:

JON FRENI

Senior Vice President
+1 617 912 7055
jonathan.freni@cbre.com

TIM HOWE

Senior Vice President
+1 617 912 7090
timothy.howe@cbre.com

ABBY CALLAHAN

Vice President
+1 617 933 0173
abby.callahan@cbre.com

© 2019 CBRE, Inc. All rights reserved. This information has been obtained from sources believed reliable, but has not been verified for accuracy or completeness. You should conduct a careful, independent investigation of the property and verify all information. Any reliance on this information is solely at your own risk. CBRE and the CBRE logo are service marks of CBRE, Inc. All other marks displayed on this document are the property of their respective owners, and the use of such logos does not imply any affiliation with or endorsement of CBRE. Photos herein are the property of their respective owners. Use of these images without the express written consent of the owner is prohibited.