

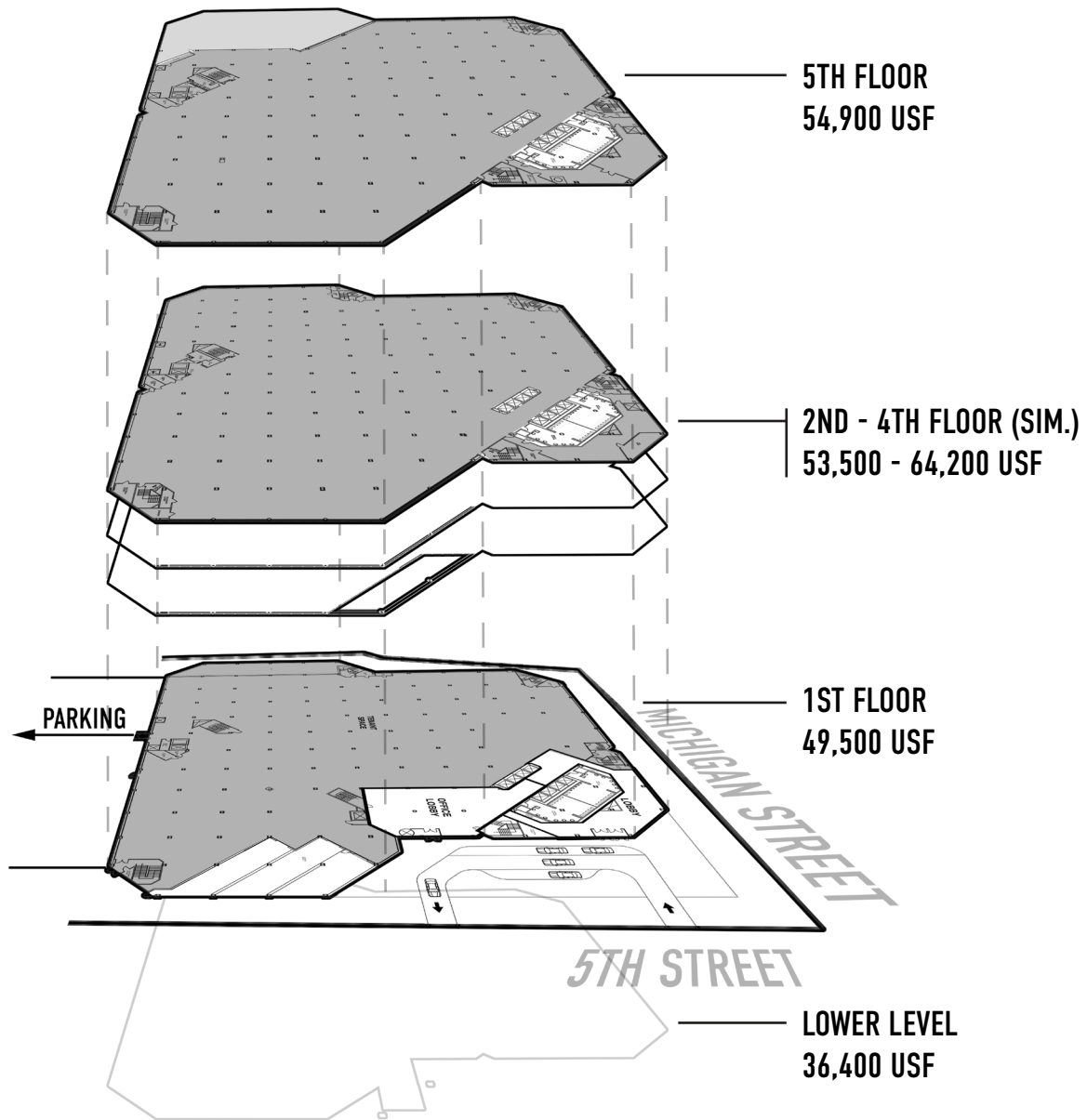
HQ501

OFFICE DOWNTOWN.
OFFICE DIFFERENT.

#WelcomeToHQ501



#OfficeSpace



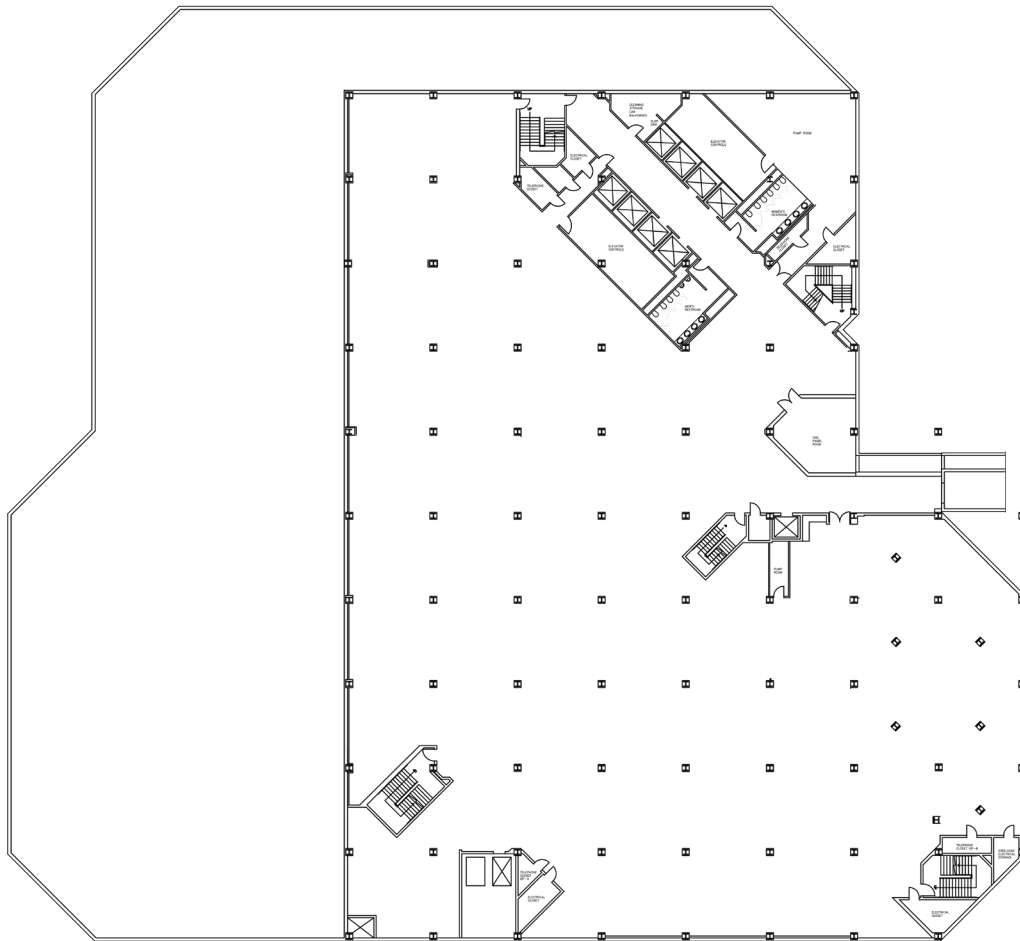
#QuickBuilding&AreaFacts

1. UP TO 370,000 RSF AVAILABLE IMMEDIATELY
2. 600+ EMPLOYEES COULD BE ACCOMODATED ON EACH FLOOR
3. 2,000 SF FULLY EQUIPPED COMMERCIAL KITCHEN
4. 67,000 HIGHER EDUCATION STUDENTS IN THE AREA - GREAT FOR RECRUITING
5. OVER 83,490 PEOPLE WORK IN DOWNTOWN MILWAUKEE

#OfficeSpace

LOWER LEVEL

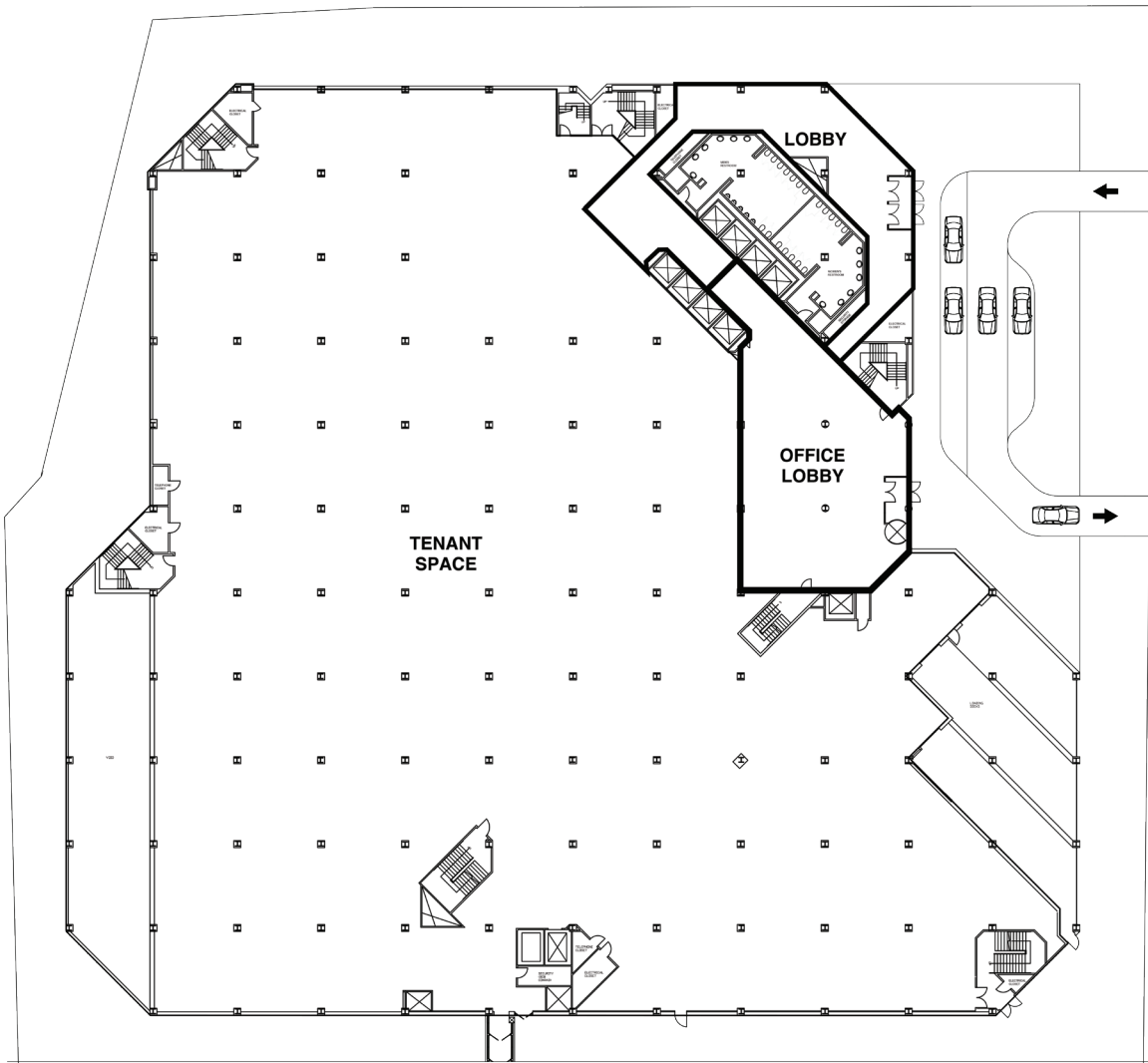
36,400 USF



#OfficeSpace

FLOOR 1

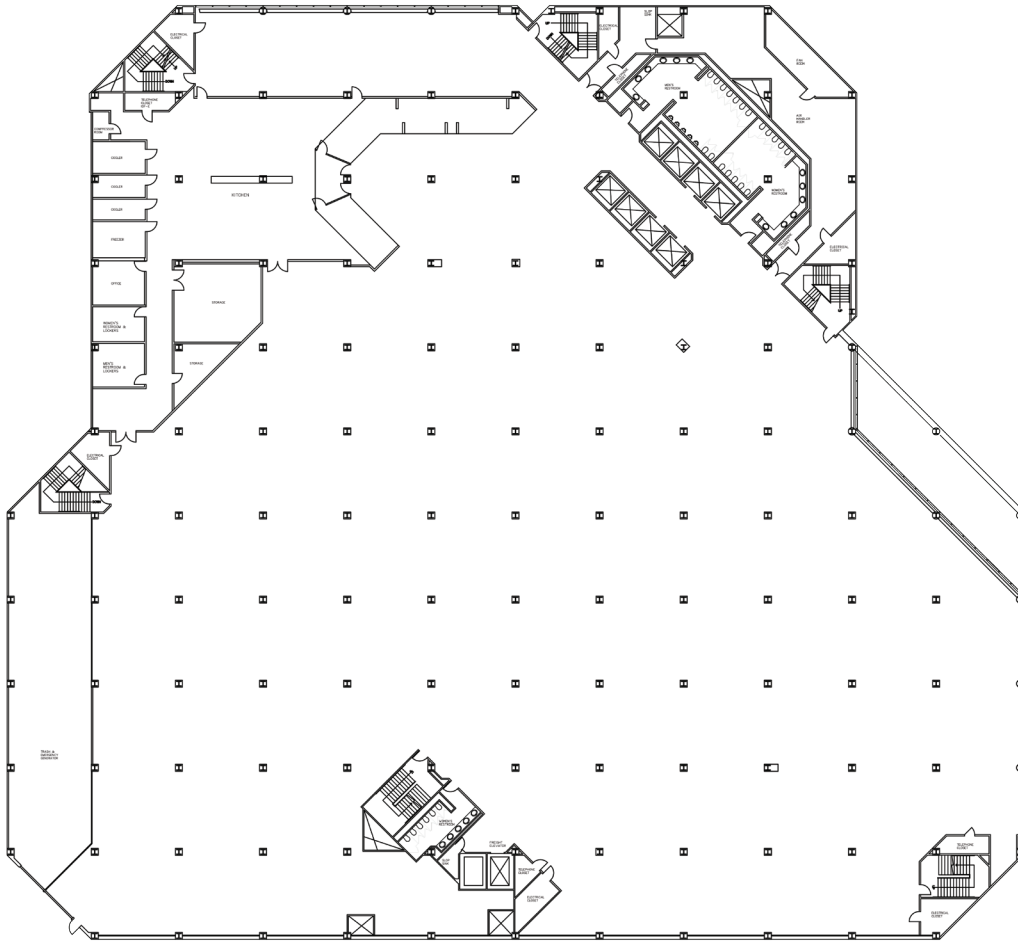
49,500 USF



#OfficeSpace

FLOOR 2

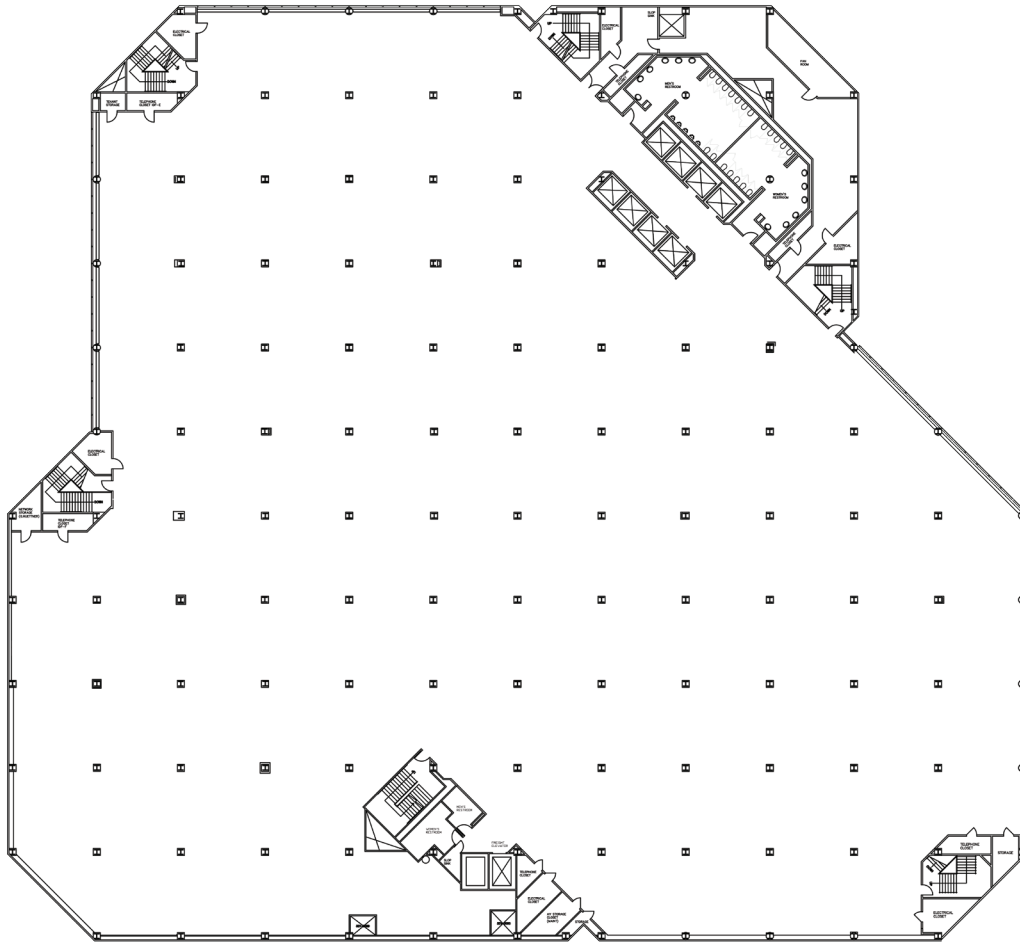
53,500 - 64,200 USF



#OfficeSpace

FLOOR 3

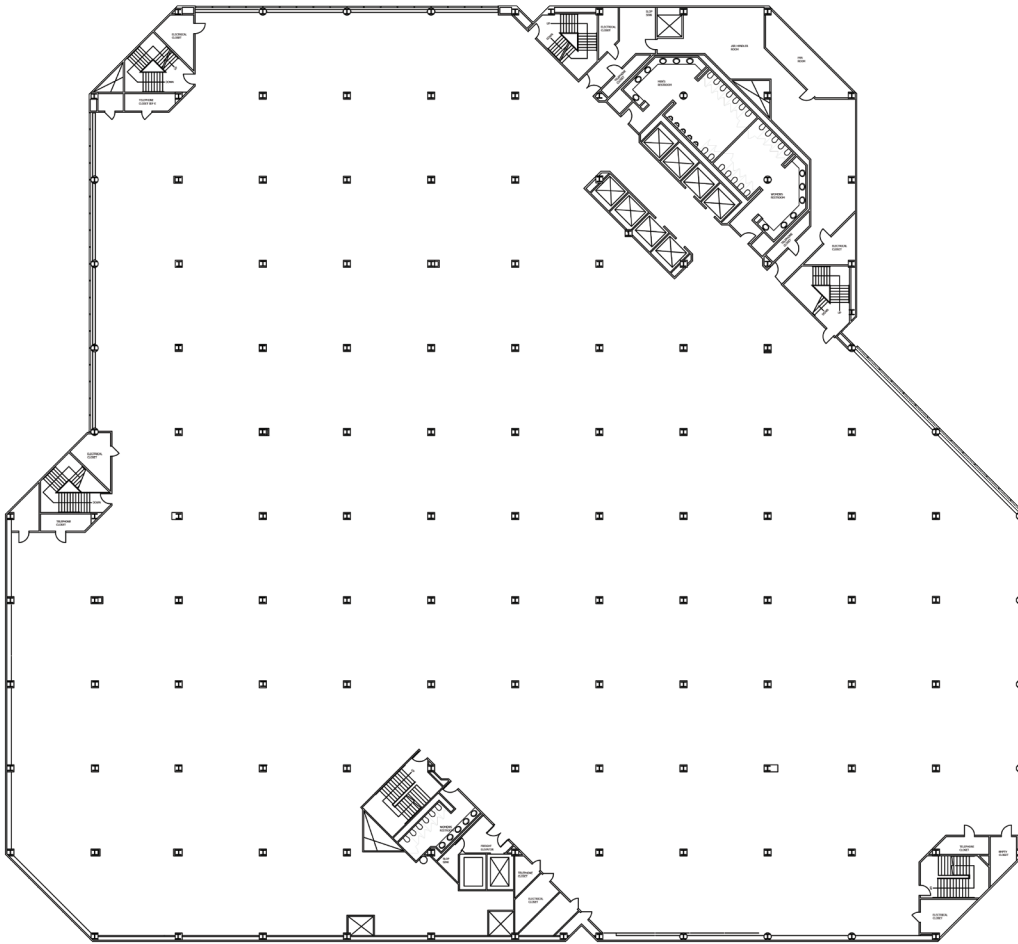
53,500 - 64,200 USF



#OfficeSpace

FLOOR 4

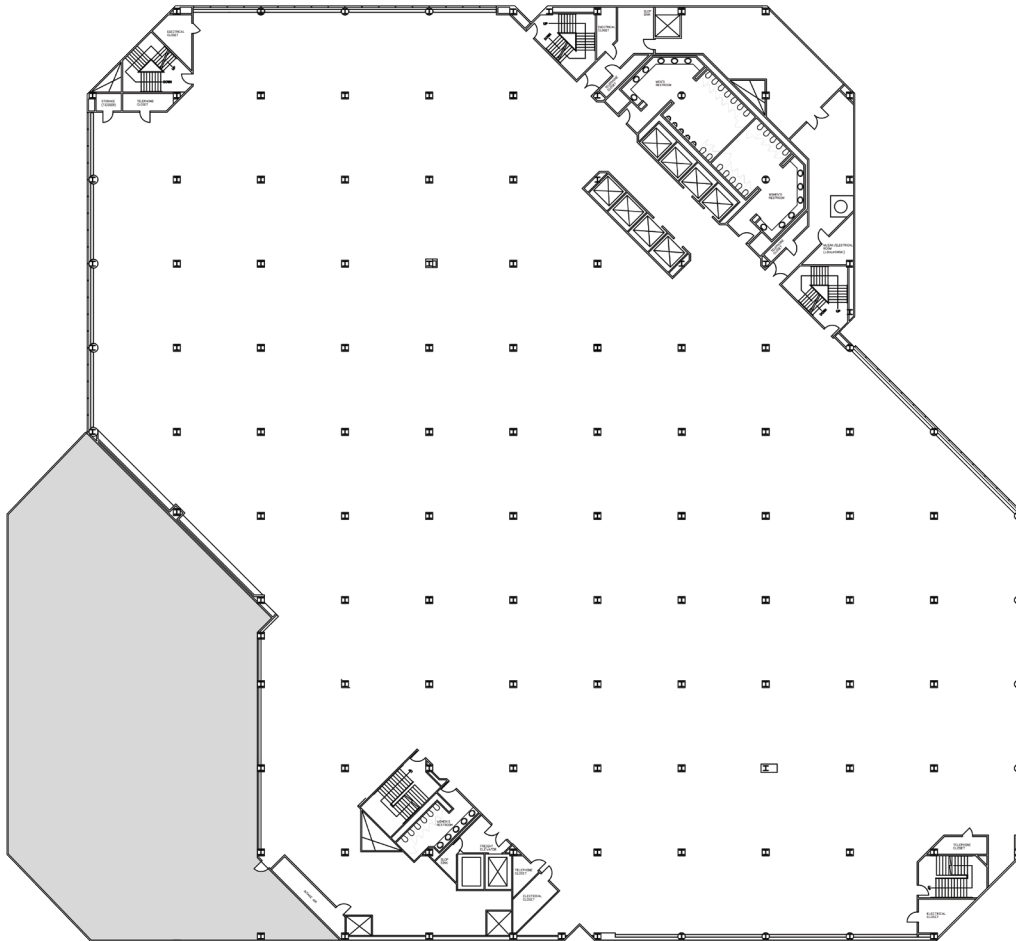
53,500 - 64,200 USF



#OfficeSpace

FLOOR 5

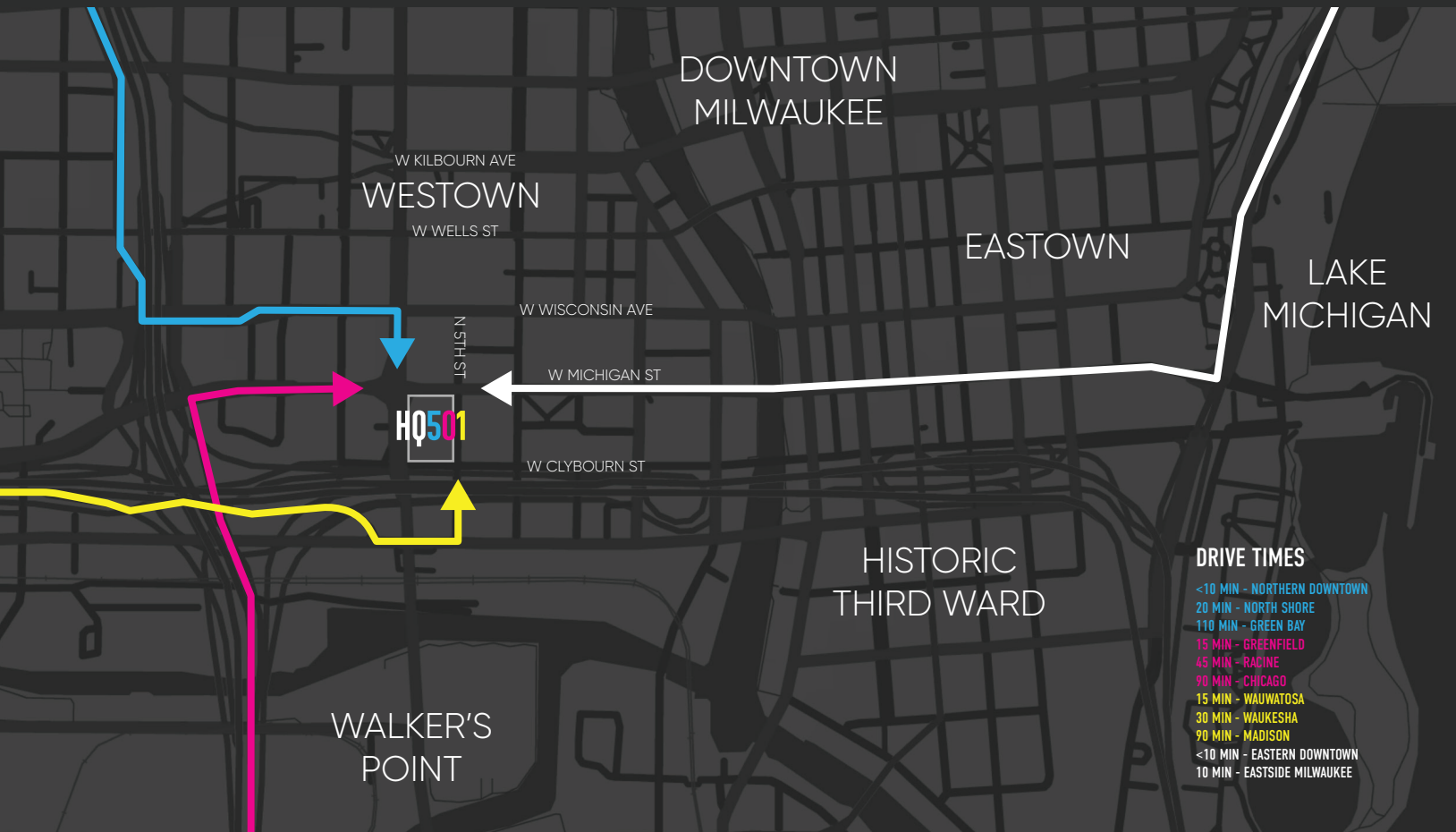
54,900 USF



HQ501

OFFICE DOWNTOWN.
OFFICE DIFFERENT.

#InTheMixMaps



#QuickFacts



800+ STALLS ON SITE

Rare in Milwaukee, we've got you covered with 850 parking stalls on-site with direct-to-build-ing access



EASY MULTI-MODAL ACCESS

Getting to and from HQ501 is easy no matter how you travel. Pedestrian scaled streetscapes, Amtrak, freeway access, and bikeshare stations are all nearby or right at the front door.



GREAT EATS & DRINKS

With over 27 fine establishments nearby, most restaurants, happy hours, and lounges are only a quick walk away.



130K VIEWS

Over 130,000 commuters drive by this site daily. That's a lot of eyes on your signage.



SO MUCH TO ENJOY

Nightlife, Music, Sports, oh my! Most within walking distance and just blocks away from Milwaukee's new Entertainment Block.



SECURED & COVERED

Three secure and weather protected loading bays for all your move-in, loading, and unloading needs.

HQ501

#TransformationalCurbAppeal



#Let'sTalk

ALYSSA GEISLER CBRE
414.274.1649
alyssa.geisler@cbre.com

PAT ALGIERS CHEMISTRY IN PLACE
414.333.3881
algiers@chemistryinplace.com

SCOTT LURIE F STREET GROUP
414.274.1649
scott@fstreetgroup.com

HQ501

#TransformationalCurbAppeal



#Let'sTalk

ALYSSA GEISLER CBRE
414.274.1649
alyssa.geisler@cbre.com

PAT ALGIERS CHEMISTRY IN PLACE
414.333.3881
algiers@chemistryinplace.com

SCOTT LURIE F STREET GROUP
414.274.1649
scott@fstreetgroup.com

HQ501

#TransformationalCurbAppeal



#Let'sTalk

ALYSSA GEISLER CBRE
414.274.1649
alyssa.geisler@cbre.com

PAT ALGIERS CHEMISTRY IN PLACE
414.333.3881
algiers@chemistryinplace.com

SCOTT LURIE F STREET GROUP
414.274.1649
scott@fstreetgroup.com