

501 BOYLSTON STREET

nuveen



±190,000 SF

BACK BAY OFFICE OPPORTUNITY

501 BOYLSTON STREET
nuveen

hello there

Step into a contemporary office setting tailored for today's business dynamics. Nuveen crafts spaces that emphasize culture, work-life harmony, and teamwork. At 501 Boylston Street, we've embodied these ideals to create a top-tier destination.



501 BOYLSTON STREET
nuveen

claim your space

Great office spaces are available
today in a broad range of sizes.

8TH FLOOR - 62,073 RSF
FULL FLOOR

7TH FLOOR - 62,672 RSF
FULL FLOOR

6TH FLOOR - 23,119 RSF
SPECULATIVE SUITE

6TH FLOOR - 10,185 RSF
AVAILABLE 9/1/2025

3RD FLOOR - 31,661 RSF
AVAILABLE 9/1/2025

501 BOYLSTON STREET
nuveen

putting the office experience center stage



501 Boylston Street has cultivated a great work environment for companies of all sizes. Coupled with the neighborhood and building amenities, our building team is eager to provide high quality service that makes life and business easier.

Supported by modern, high design and amenities, a day at the office is now a better place to be.

- High ceilings, internal lightwells and oversized windows provide exceptional natural light and dramatic views of the Back Bay and Copley Square
- Unique ±62,000 SF floor plates with generous column spacing
- Spectacular build-out opportunities allow tenants to showcase their unique personalities and cultures
- In-building parking garage
- On-site Boston Sports Club fitness center and pool along with several other in-building retailers
- Prime Back Bay location providing easy access to dining, shopping, public transit and major highways

501 BOYLSTON STREET
nuveen

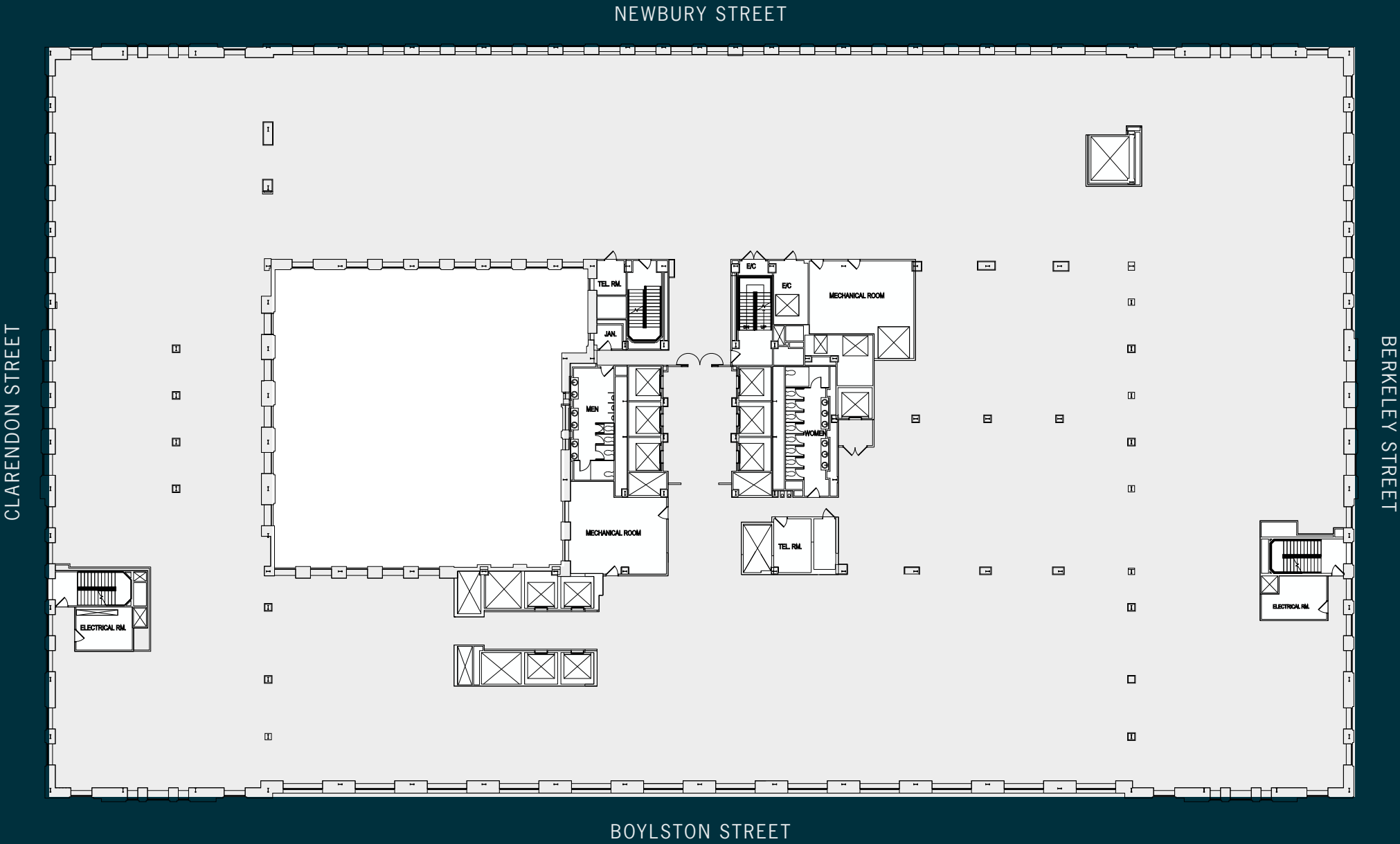


work/life balance starts here

Stay a while! Welcome to an inviting workspace that helps the modern employee return to office. Enjoy the well lit spaces, the high ceilings, and oversized windows looking out at quintessential Back Bay views. Here all the spaces are comfortable and well designed—it's an optimal setting for collaboration and connection.

full floor

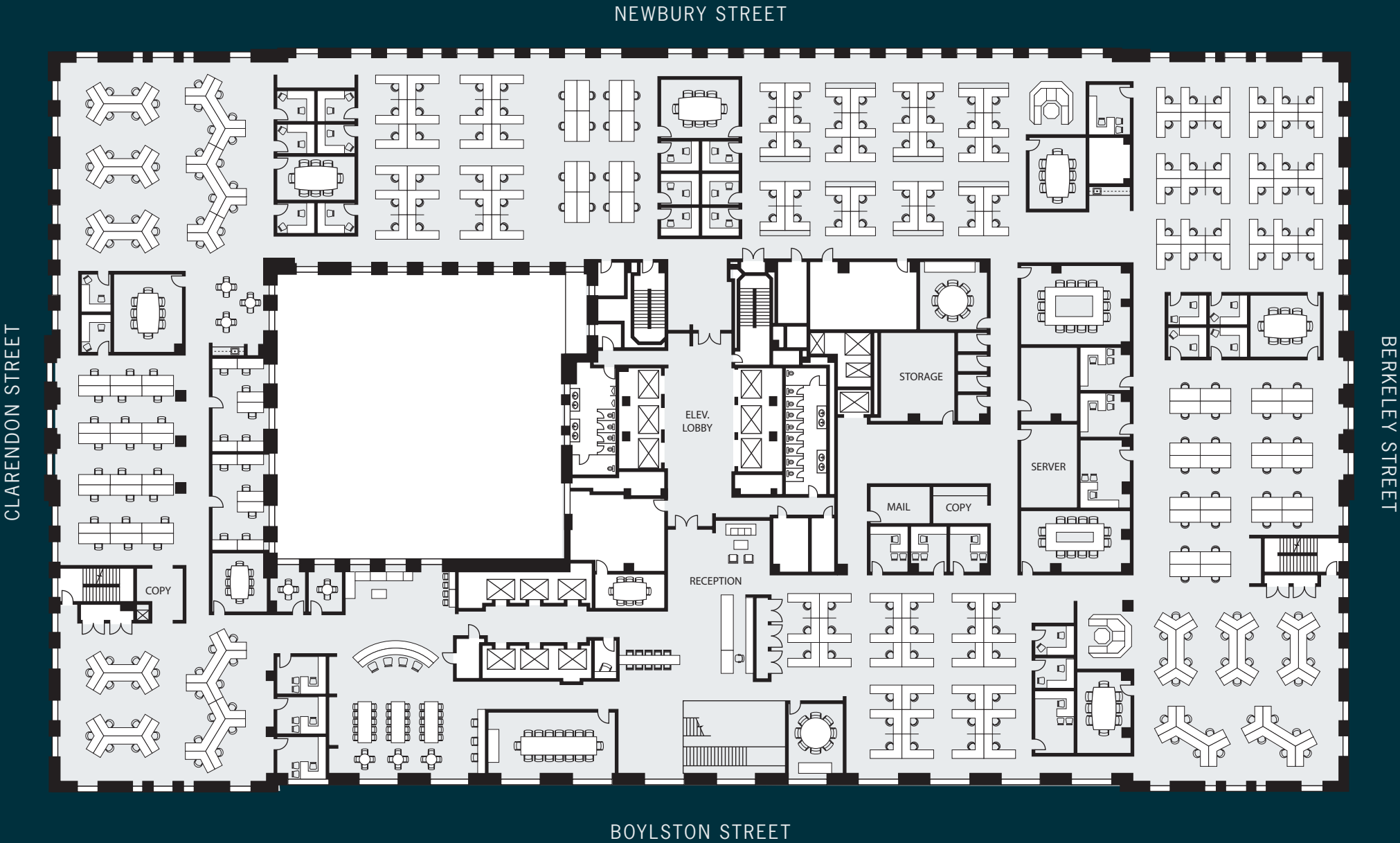
±62,000 SF total
core & shell



full floor

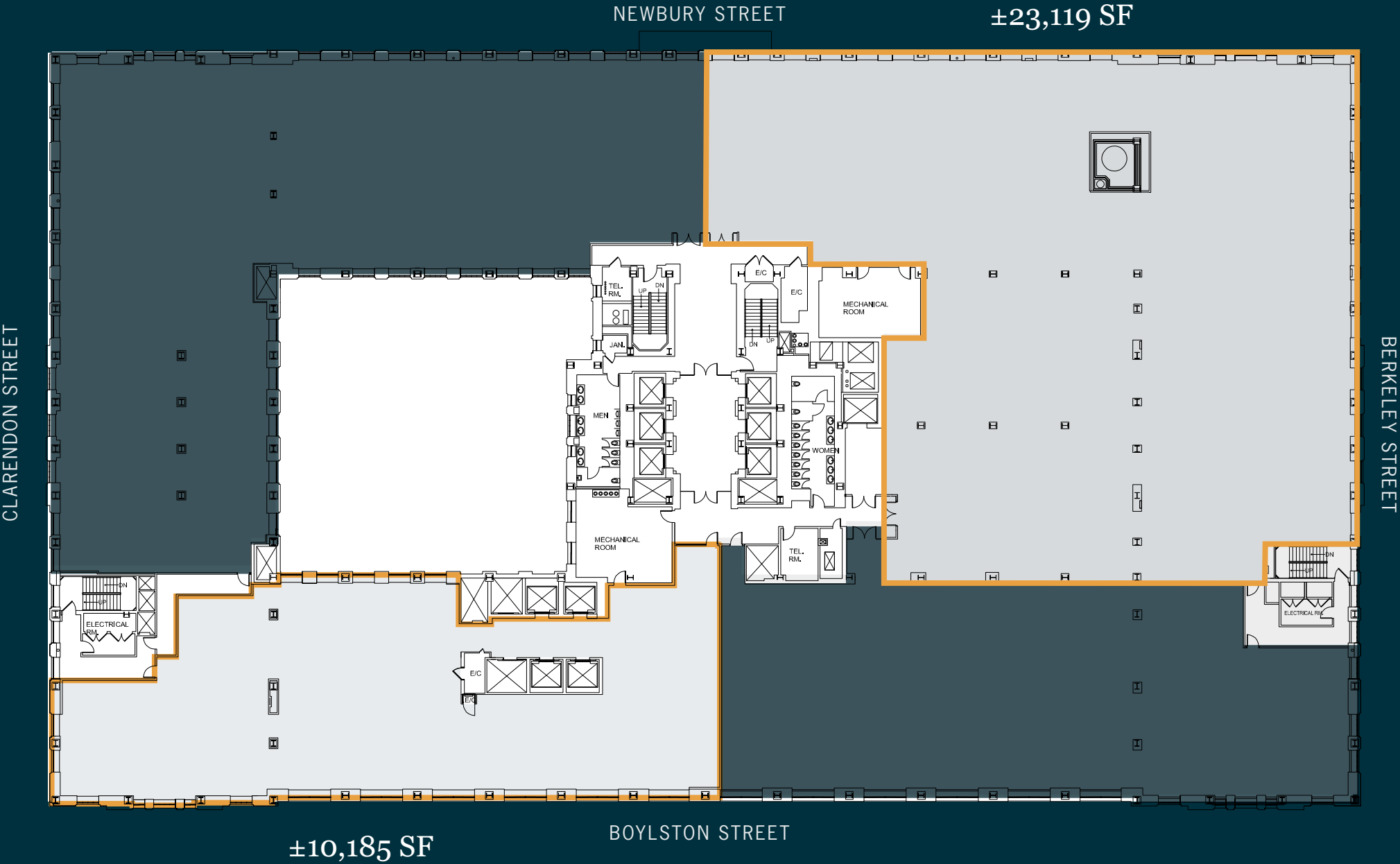
±62,000 SF total
test fit

- WORKSTATIONS - 285
 - OFFICES - 35
 - CONFERENCE ROOMS - 12
-
- TOTAL STAFF - 320



6th floor

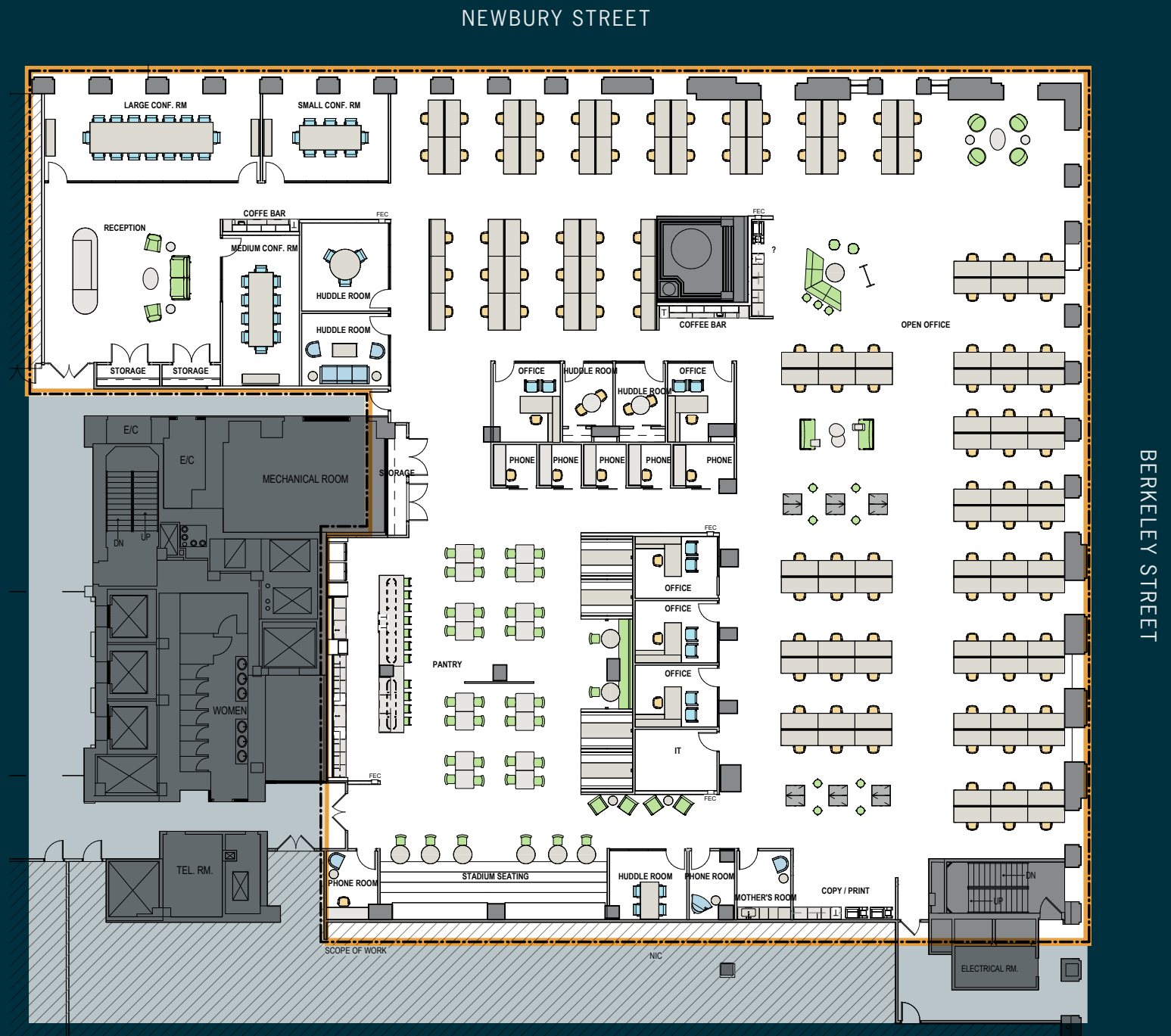
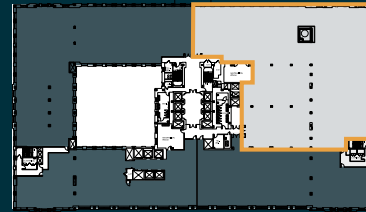
±23,119 SF
available
speculative suite
& ±10,185 SF
available



501 BOYLSTON STREET
nuveen

6th floor

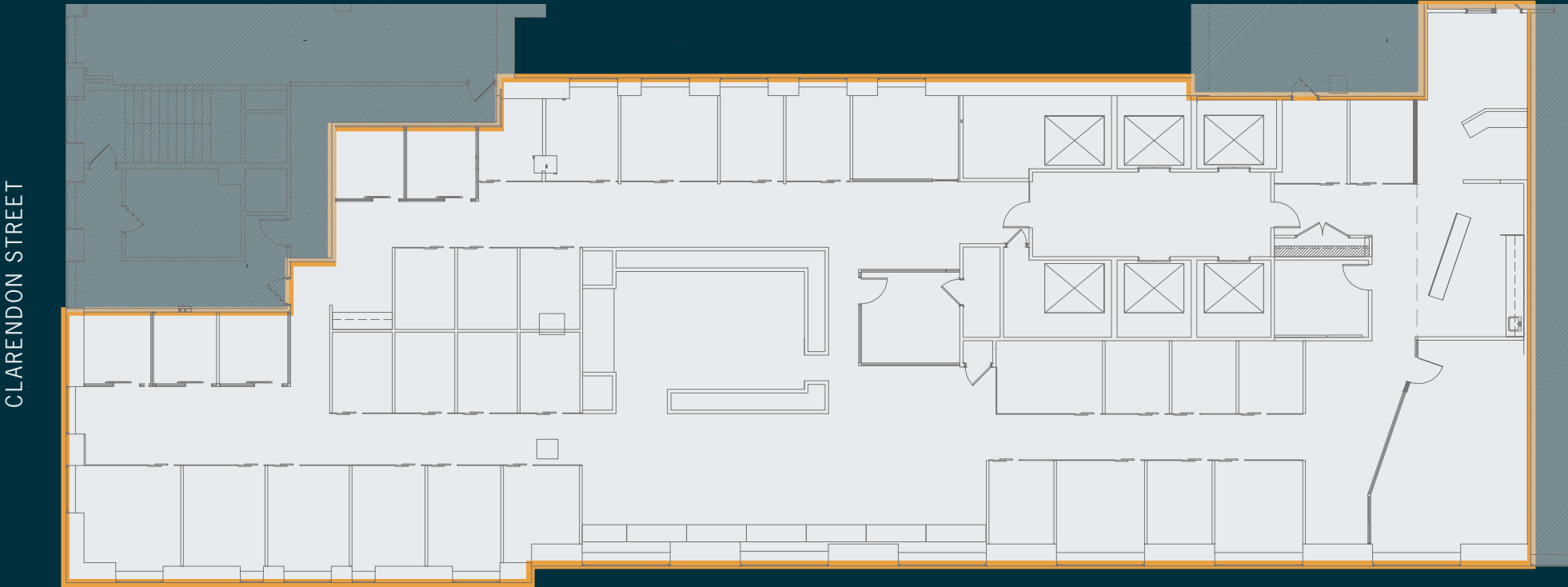
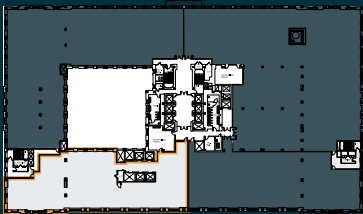
±23,119 SF
available
speculative suite



501 BOYLSTON STREET
nuveen

6th floor

±10,185 SF
available
9/1/2025



CLARENDON STREET

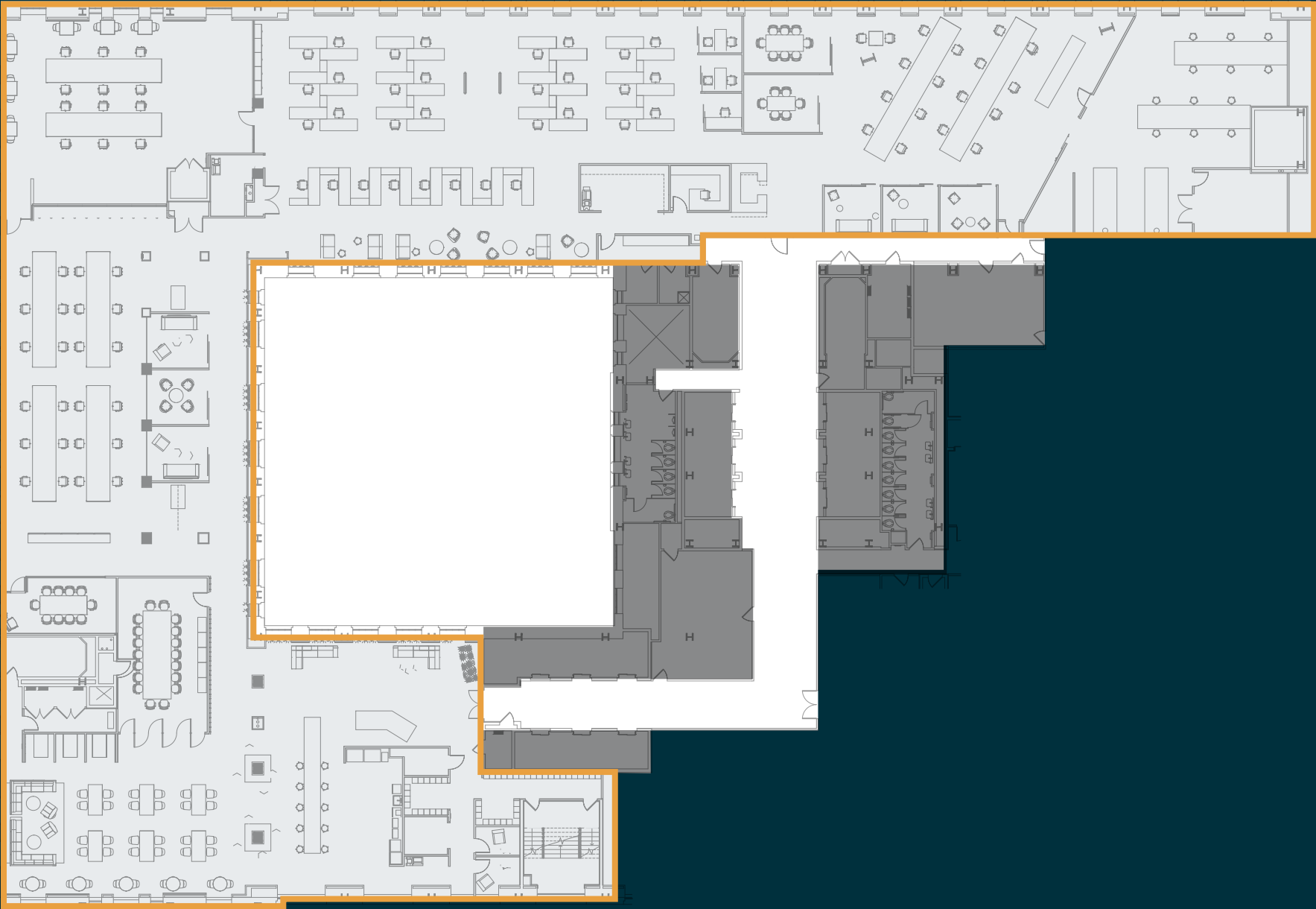
BOYLSTON STREET

501 BOYLSTON STREET
nuveen

3rd floor

±31,661 SF
available
9/1/2025

CLARENDON STREET



NEWBURY STREET

BOYLSTON STREET

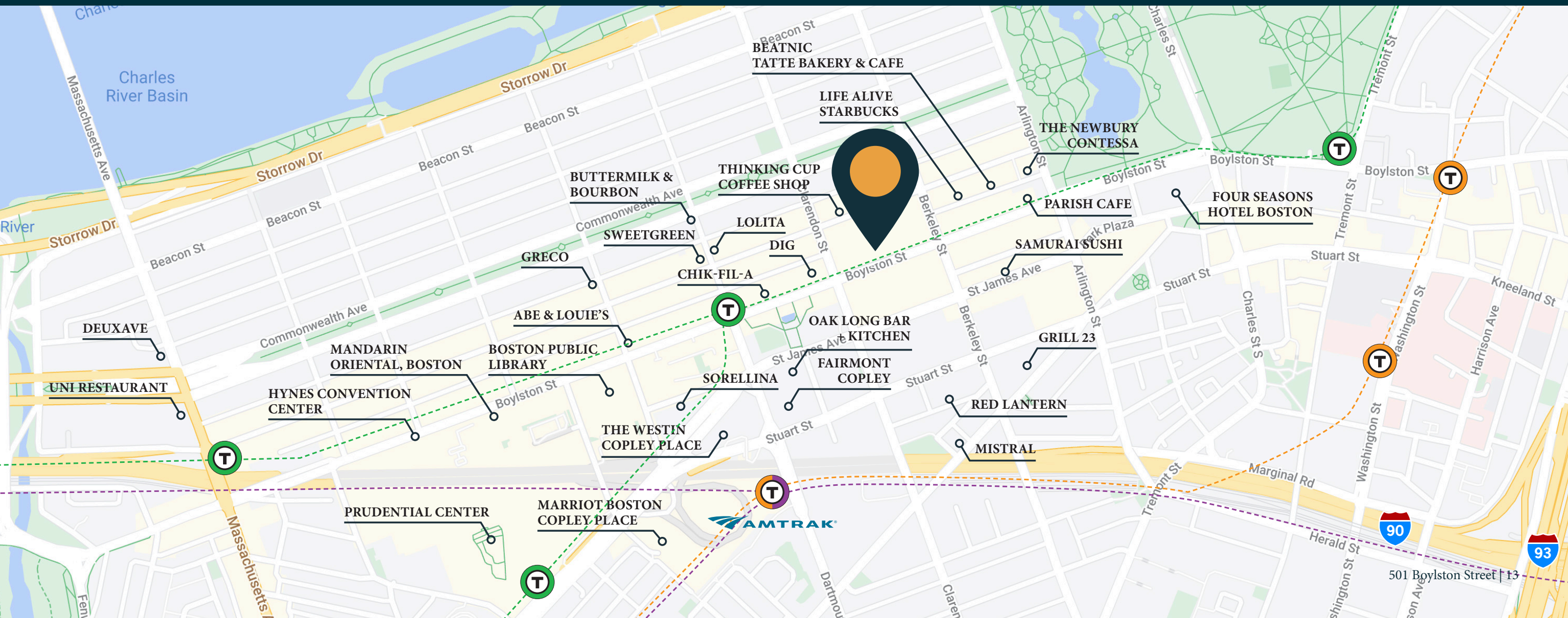


a new standard
for office life

We're raising the bar on the workday. Dive into an office experience and immerse yourself in a space and location where local highlights and great service help blend work with life. Elevate your daily grind and enjoy an environment that's dynamic and flexible. It's the future of office life.

501 BOYLSTON STREET
nuveen

convenience meets culture



501 BOYLSTON STREET

nuveen



Nuveen is dedicated to making the workplace into an immersive, collaborative hub for today's professionals. Through our service-driven approach, we offer enriching experiences and amenities that prioritize the wellbeing of all tenants and visitors.



ready when you are

Kevin Kennedy

+1 617 912 7058
kevin.kennedy@cbre.com

Lauren Lipscomb

+1 617 912 7049
lauren.lipscomb@cbre.com

Suzanne Brown

+1 617 912 6931
suzanne.brown@cbre.com

Allison Mintzer

+1 508 808 0981
allison.mintzer@cbre.com

CBRE

© 2024 CBRE, Inc. All rights reserved. This information has been obtained from sources believed reliable, but has not been verified for accuracy or completeness. You should conduct a careful, independent investigation of the property and verify all information. Any reliance on this information is solely at your own risk. CBRE and the CBRE logo are service marks of CBRE, Inc. All other marks displayed on this document are the property of their respective owners. Photos herein are the property of their respective owners. Use of these images without the express written consent of the owner is prohibited.